

# The Macroeconomics of Clean Energy Subsidies

*Gregory Casey, Woongchan Jeon, Christian Traeger*

## **Impressum:**

CESifo Working Papers

ISSN 2364-1428 (electronic version)

Publisher and distributor: Munich Society for the Promotion of Economic Research - CESifo GmbH

The international platform of Ludwigs-Maximilians University's Center for Economic Studies and the ifo Institute

Poschingerstr. 5, 81679 Munich, Germany

Telephone +49 (0)89 2180-2740, Telefax +49 (0)89 2180-17845, email [office@cesifo.de](mailto:office@cesifo.de)

Editor: Clemens Fuest

<https://www.cesifo.org/en/wp>

An electronic version of the paper may be downloaded

- from the SSRN website: [www.SSRN.com](http://www.SSRN.com)
- from the RePEc website: [www.RePEc.org](http://www.RePEc.org)
- from the CESifo website: <https://www.cesifo.org/en/wp>

# The Macroeconomics of Clean Energy Subsidies

## Abstract

We study clean energy subsidies in a quantitative climate-economy model. Clean energy subsidies decrease carbon emissions if and only if they lower the marginal product of dirty energy. The constrained-efficient subsidy equals the marginal external cost of dirty energy multiplied by the marginal impact of clean energy production on dirty energy production. With standard functional forms, two factors determine the impact of clean subsidies on dirty energy production: the elasticity of substitution between clean and dirty energy and the price elasticity of demand for energy services. At standard parameter values, clean production subsidies increase emissions and decrease welfare relative to *laissez faire*. With greater substitutability between clean and dirty energy, the subsidies in the Inflation Reduction Act can generate modest emissions reductions. Even in this more optimistic scenario, a clean subsidy generates significantly higher emissions and lower welfare than a tax on dirty energy.

JEL-Codes: H230, O440, Q430, Q540.

Keywords: climate change mitigation, second-best policies, economic growth.

*Gregory Casey*  
*Department of Economics*  
*Williams College, Williamstown / MA / USA*  
*gpc2@williams.edu*

*Woongchang Jeon*  
*Department of Management, Technology, and*  
*Economics, ETH Zurich / Switzerland*  
*wjeon01@ethz.ch*

*Christian Traeger*  
*Department of Economics*  
*University of Oslo / Norway*  
*traeger@uio.no*

December 2023

Casey gratefully acknowledges financial support from National Science Foundation Grant SES-2315408. Traeger gratefully acknowledges support by the Research Council of Norway under project 315878. We thank Don Fullerton, Stephie Fried, Rick van der Ploeg, and seminar participants at the Virtual Seminar on Climate Economics, Brown, Colby, the Institute for International Economic Studies, UC Santa Barbara, and Yale for helpful feedback. All remaining errors are our own.

# 1 Introduction

Most macroeconomic analyses of climate change mitigation policies focus on carbon taxes, because they are the first-best approach to addressing the negative externality from carbon emissions (e.g., Nordhaus and Boyer, 2000; Golosov et al., 2014; Hassler et al., 2016; Hassler and Krusell, 2018; Barrage, 2020; Barrage and Nordhaus, 2023). In real-world policymaking, however, a much wider set of policy options are considered and implemented. For example, subsidies for the production of clean energy are a central component of the Inflation Reduction Act (IRA), which was recently passed in the United States. We study the effectiveness of these clean energy subsidies in a macroeconomic climate-economy model.

In the first step of our analysis, we study a static model for which we can derive analytic results. Output is a function of labor, clean energy, and dirty energy. Both types of energy are extracted from the environment using the final good. There is one market failure: a negative externality from dirty energy use. The social planner only has access to one instrument: a subsidy for clean energy production. Clean energy subsidies increase the quantity of clean energy extracted from the environment. Their impact on dirty energy production is ambiguous. If the expansion in clean energy increases the marginal product of dirty energy (i.e., clean and dirty energy are gross complements), subsidies lead to greater extraction of dirty energy, increasing emissions and decreasing welfare. The opposite occurs if clean and dirty energy are gross substitutes. This intuition is independent of other market failures, such as learning-by-doing spillovers or distortionary taxation. The constrained-efficient subsidy equals the marginal external cost of dirty energy times the marginal impact of clean energy production on dirty energy production. We refer to this quantity as the *indirect externality* associated with clean energy use. If clean and dirty energy are gross complements, then the indirect externality reduces welfare, and the social planner would prefer to tax clean energy.

In the second step of our analysis, we consider the special case of our static model with functional forms from the macro climate-economy literature. We consider a nested production structure where the final good is produced with a Cobb-Douglas production function that combines labor and energy services, and energy services are produced with a constant-elasticity-of-substitution (CES) production function that combines clean and dirty energy. In this setting, clean energy subsidies increase dirty energy production if and only if the magnitude of the elasticity of substitution between clean and dirty energy is less than the magnitude of the price elasticity of demand for energy services. A clean energy subsidy leads to a cleaner energy mix and increased demand for energy services. The net effect of these two competing forces determines whether dirty energy use increases or decreases.

Even before specifying the full model, it is straightforward to compare the two key parameters using the values from the existing literature. In influential work, [Goloso et al. \(2014\)](#) use an elasticity of substitution ( $\epsilon$ ) just below one and a price elasticity of demand just above one (see also [Hassler et al., 2016](#); [Hassler and Krusell, 2018](#); [Hassler et al., 2021b](#)). In other words, commonly used parameter values imply that clean energy subsidies *increase* dirty energy use and *decrease* welfare. However, there is considerable uncertainty about  $\epsilon$ . Several studies use values closer to 2, often based on the evidence presented in [Papageorgiou et al. \(2017\)](#). With this higher value, the impacts of the subsidy flip signs.

In the third step of our analysis, we study the full dynamic model. We calibrate the model to data from the United States and recent estimates of the social cost of carbon emissions from [Rennert et al. \(2022\)](#). We show that the intuition from the simple model holds in a dynamic setting. In particular, we simulate a 20 percent subsidy to clean energy production, which is in line with estimates of the subsidies in the IRA ([Bistline et al., forthcoming](#)). The calibration with  $\epsilon \approx 1$  implies that the subsidy increases U.S. emissions by approximately 1.6 percent and reduces welfare (measured as consumption equivalent variation) by approximately 0.16 percent, relative to a no-policy scenario. The calibration with  $\epsilon \approx 2$  implies that the subsidy decreases emissions by approximately 6.6 percent and has virtually no effect on welfare. With the higher elasticity, the best constant clean subsidy is about half as large as the IRA subsidy. It reduces emissions by 3.4 percent and increases welfare by 0.05 percent. The best constant dirty energy tax, however, reduces emissions by 40 percent and increases welfare by 0.7 percent.

These results have several important policy implications. First, a standard macro climate-economy model suggests limited environmental and economic benefits from the clean energy subsidies in the IRA. At standard parameter values, the model predicts that the subsidies will increase emissions and decrease welfare. At alternate plausible values, emissions decrease slightly. Second, even when subsidies decrease emissions, the best possible subsidy yields economic and environmental outcomes that are significantly worse than those that could be attained with a tax on dirty energy. Third, there is considerable need for better estimates of the elasticity of substitution between different sources of energy. The impacts of a clean energy subsidy change signs within the range of parameters used in the existing literature.

**Related Literature.** Following [Nordhaus \(1993\)](#), a rapidly expanding literature uses growth models to study climate policy (e.g., [Nordhaus and Boyer, 2000](#); [Goloso et al., 2014](#); [Hassler et al., 2021b](#); [Krusell and Smith Jr, 2022](#); [Barrage and Nordhaus, 2023](#); [Traeger,](#)

2023). This literature focuses largely on carbon taxes. We focus on subsidies for the production of clean energy, the focal point of recent legislation in the United States.

In an important exception to the focus on carbon taxes, [Hassler et al. \(2020\)](#) study the effectiveness of subsidies for clean energy R&D, as proxied by an exogenous decrease in the growth rate of clean energy prices. In computational experiments, they find that clean R&D subsidies can increase the quantity of dirty energy use.<sup>1</sup> We build on their work in two main ways. First, we study subsidies for the production of clean energy, which is the central tool in recent climate legislation, rather than R&D subsidies. Second, we show analytically when clean production subsidies increase emissions and characterize the constrained-efficient subsidy. We also show how to map this general characterization to the parameters in standard climate-economy models.

Our results are connected to a long microeconomics literature on second-best environmental policies (e.g., [Bennear and Stavins, 2007](#); [Goulder and Parry, 2008](#); [Holland et al., 2009](#)). In a model focusing on firm entry, [Baumol and Oates \(1988\)](#) show that it is theoretically possible that subsidizing clean alternatives to polluting inputs can increase pollution, because subsidies increase the scale of production. A closely related literature shows that optimal policy requires both subsidizing the clean alternative and taxing output, a ‘two-part instrument’ (e.g., [Fullerton and Wolverton, 2000, 2005](#)). We build on this literature by providing a simple and novel characterization of constrained-efficient subsidies and the conditions under which subsidies increase emissions. We also quantify these effects in a macro climate-economy model and show that subsidies increase emissions at standard parameter values.

[Newell et al. \(2019\)](#) provide a helpful overview of the existing literature focusing specifically on clean energy subsidies. They highlight that subsidies have received much less attention than carbon taxes. In a close connection to the broader subsidies literature, they highlight that clean energy subsidies lead to inefficiently low electricity prices and therefore inefficiently high electricity production. [Palmer and Burtraw \(2005\)](#) and [Fischer and Newell \(2008\)](#) study static models where clean energy subsidies reduce emissions, but are less efficient than other options, like emissions pricing or renewable portfolio standards. [Gerlagh and Van der Zwaan \(2006\)](#) and [Kalkuhl et al. \(2013\)](#) arrive at similar findings in dynamic settings (see also, [Gugler et al., 2021](#); [Cruz and Rossi-Hansberg, forthcoming](#); [Airaudo et al., 2023](#)). [Rezai and Van Der Ploeg \(2017\)](#) study constrained-efficient clean energy subsidies

---

<sup>1</sup>In ongoing work, they also simulate the impacts of clean energy subsidies in a static model similar to ours and find that subsidies can increase dirty energy use (see, for example, a recent presentation by [Krusell \(2023\)](#)).

in a dynamic model under the assumption that clean and dirty energy sources are perfect substitutes. We build on this literature by studying a simple and tractable model that allows us to characterize the constrained-efficient subsidy and by showing that subsidies increase emissions in a standard macro climate-economy model.

Bistline et al. (forthcoming) study the impacts of the IRA using the U.S. Regional Economy, Greenhouse Gas, and Energy (US-REGEN) model of the energy system. They find that subsidies decrease dirty energy use. As discussed in Section 5.2, our results complement theirs in that we focus on macroeconomic dynamics, while they utilize a very detailed model of the energy sector. Bistline et al. (forthcoming) also use the first-order conditions of a simplified macro climate-economy to show that the intuition from the static second-best environmental economics literature holds in a dynamic setting, but they do not solve the model quantitatively. We build on their analysis in several ways. First, we characterize the conditions under which subsidies decrease emissions and increase welfare. Second, we solve a quantitative macro model to study the effects of the Inflation Reduction Act. Third, we calculate the best possible subsidy and compare the implications of the subsidy to those of a dirty energy tax.

## 2 Static Model

This section presents a simple static model that builds the intuition underlying our general findings.

### 2.1 Model Structure

Gross output ( $q$ ) is given by a constant-return-to-scale (CRS) function<sup>2</sup>

$$q = f(l, e_d, e_c), \tag{1}$$

where  $l$  is the quantity of labor,  $e_d$  is the quantity of dirty energy, and  $e_c$  is the quantity of clean energy. We assume that the production function is twice continuously differentiable,

---

<sup>2</sup>The general approach of this section follows from a working paper by Hoel (2012). We extend his work by considering a concave utility function and a constant-return-to-scale production function with three inputs. We also do not make direct assumptions about the sign of  $f_{cd}$ . Hoel (2012) considers the case of  $f_{cd} < 0$  in a two-factor production function, but this assumption is inconsistent with standard neoclassical production functions. By including a third factor, we can consider a wider range of possible outcomes and map the results to production functions used in macroeconomic climate-economy models. Hassler et al. (2021b) study a similar static model to investigate the role of carbon taxes that are set above or below their optimal level.

has increasing and diminishing marginal products, and satisfies the Inada conditions. We use  $f_j$ ,  $j \in \{l, d, c\}$ , to denote partial derivatives.

It takes  $p_c$  ( $p_d$ ) units of the final good to extract one unit of  $e_c$  ( $e_d$ ) from the environment. As noted by [Hassler et al. \(2021b\)](#), this is equivalent to assuming that the production functions for both primary energy sectors are symmetric to the production function for final goods and differ only in total factor productivity.

Labor supply is inelastic:  $l = 1$ . Final output ( $y$ ) is gross output minus extraction costs:

$$y = f(l, e_d, e_c) - p_c e_c - p_d e_d. \quad (2)$$

A representative consumer has the utility function

$$U = u(y) - m e_d, \quad (3)$$

where  $m$  is the marginal external cost of dirty energy use,  $u' > 0$ , and  $u'' < 0$ .

## 2.2 Competitive Equilibrium

There is perfect competition, and the price of the final good is normalized to one. The representative firm solves

$$\max_{l, e_c, e_d} f(l, e_d, e_c) - (p_c + \tau_c) e_c - p_d e_d - w l, \quad (4)$$

where  $\tau_c$  is a tax/subsidy on  $e_c$  ( $\tau_c > 0$  is a tax), and  $w$  is the wage. After imposing  $l = 1$ , the firm's first-order conditions for energy use are

$$f_c(1, e_d, e_c) = p_c + \tau_c \quad (5)$$

$$f_d(1, e_d, e_c) = p_d. \quad (6)$$

The Inada conditions imply that there exists a unique  $e_d$  that satisfies (6) for a given  $e_c$ . Thus, there exists some single-valued function  $e_d = D(e_c)$  with  $D'(e_c) = \frac{f_{cd}}{-f_{dd}}$ . Since  $f_{dd} < 0$ , the sign of  $D'(e_c)$  matches the sign of  $f_{cd}$ . This follows intuitively from equation (6). If clean and dirty energy are gross complements ( $f_{cd} > 0$ ), then an increase in clean energy increases the return to extracting dirty energy from the environment. So, the producer extracts more dirty energy until the marginal product is equal to the price.

Equations (5) and (6) also imply that  $\frac{de_c}{d\tau_c} < 0$ . In other words, clean energy taxes



(subsidies) decrease (increase) clean energy use (see Appendix Section A.1). We can also rearrange (5) to get  $\tau_c = f_c(1, D(e_c), e_c) - p_c \equiv \tau(e_c)$ , where  $\tau'(e_c) < 0$ .

Since the production function is CRS, total wages are equal to gross output not paid to energy producers:

$$wl = q - (p_c + \tau_c)e_c - p_d e_d. \quad (7)$$

The government pays subsidies (or collects taxes) of  $T = -\tau_c e_c$  to energy producers. To balance the budget, it uses lump sum taxation that does not affect incentives. Thus, the consumer's after-tax income is

$$q - p_c e_c - p_d e_d = y, \quad (8)$$

i.e. the representative consumer simply consumes all of the final output.

## 2.3 Constrained-Efficient Subsidies

The constrained social planner chooses  $\tau_c$  to maximize (3), subject to the competitive equilibrium equations (5)–(6). This differs from a first-best equilibrium in which the social planner would freely choose both  $e_c$  and  $e_d$ . We will use  $\tau_c^*$  to denote the constrained-efficient tax/subsidy on the quantity of clean energy. To more easily derive  $\tau_c^*$ , we re-frame the optimization problem as one where the social planner chooses  $e_c$  subject to  $e_d = D(e_c)$ . This is equivalent to choosing a tax/subsidy  $\tau_c$ , because of the one-to-one mapping  $\tau_c = \tau(e_c)$ . We will use  $e_c^*$  for the constrained-efficient quantity of clean energy.

The social planner's maximization problem is

$$\max_{e_c} u(f(1, D(e_c), e_c) - p_d D(e_c) - p_c e_c) - m D(e_c). \quad (9)$$

The first order condition is

$$\left( f_c(1, D(e_c^*), e_c^*) - p_c \right) + \left( f_d(1, D(e_c^*), e_c^*) - p_d \right) D'(e_c^*) = \frac{m}{u'(y)} D'(e_c^*). \quad (10)$$

The right-hand side of (10) is the marginal external cost of dirty energy measured in units of output,  $\frac{m}{u'(y)}$ , scaled by the impact of clean energy production on dirty energy production,  $D'(e_c^*)$ . We refer to this as the marginal *indirect externality* from clean energy use. At the constrained optimum, this should equal the marginal change in  $y$  from increasing  $e_c$ , which is on the left-hand side of the equation.

To determine the tax/subsidy that implements  $e_c^*$ , we compare the social planner's solution to the competitive equilibrium. From the firm's FOCs,  $f_c(1, D(e_c^*), e_c^*) - p_c = \tau_c^*$  and

$f_d(1, D(e_c^*), e_c^*) - p_d = 0$ . Plugging in these results, the social planner's optimality condition becomes

$$\tau_c^* = \frac{m}{u'(y)} D'(e_c) = \left( \frac{m}{u'(y)} \right) \left( \frac{f_{cd}}{-f_{dd}} \right). \quad (11)$$

The optimal tax/subsidy for clean energy is equal to the indirect externality. When  $f_{cd} > 0$ , an increase in clean energy leads to greater extraction of dirty energy, implying that the indirect externality from clean energy reduces welfare, and the constrained social planner would prefer to tax clean energy. The reverse occurs when  $f_{cd} < 0$ .

**Proposition 1.** *Consider the static model presented in this section. If  $f_{cd} > 0$  (i.e., increases in clean energy raise the marginal product of dirty energy), then the constrained social planner chooses to tax clean energy. If  $f_{cd} < 0$ , then the constrained social planner chooses to subsidize clean energy.*

If the subsidy-induced expansion in clean energy increases the marginal product of dirty energy, then firms respond by extracting more dirty energy. This happens until the marginal product falls back to the level of the extraction cost. In this case, subsidies increase pollution and decrease welfare, and the constrained social planner could increase welfare by taxing clean energy. The opposite occurs if the increase in clean energy decreases the marginal product of dirty energy.

## 2.4 Additional Results

The analysis in the preceding section also has implications for the welfare effects of non-constrained-efficient taxes/subsidies for clean energy. Appendix Section A.2 derives a more general expression for the welfare impacts of clean energy taxes/subsidies. The marginal welfare impact starting from laissez faire is given by

$$\left. \frac{dU}{d\tau_c} \frac{1}{u'(y)} \right|_{\tau_c=0} = - \frac{m}{u'(y)} \frac{de_d}{d\tau_c} = - \frac{m}{u'(y)} \frac{de_d}{de_c} \frac{de_c}{d\tau_c} = \frac{m}{u'(y)} \frac{f_{cd}}{-f_{dd}} \left( - \frac{de_c}{d\tau_c} \right). \quad (12)$$

The consumers' utility function is linearly-separable in final output and the external cost of pollution. The firm already chooses energy inputs to maximize output, implying that the only first-order welfare effect of subsidies comes from pollution. A small subsidy will decrease welfare if and only if it increases dirty energy use, which occurs when  $f_{cd} > 0$ .

We focus on the case where there is only a single externality. Clean energy subsidies are sometimes justified by the presence of learning-by-doing (LBD) externalities in clean energy production (e.g., [Gillingham and Stock, 2018](#); [Newell et al., 2019](#); [Bistline et al.,](#)

forthcoming). Appendix Section A.3 analyzes an extension of the static model that includes LBD. LBD does not affect the relationship between the quantity of clean energy and the marginal product of dirty energy. With LBD and  $f_{cd} > 0$ , subsidies can increase welfare relative to laissez-faire, but only at the expense of worsening environmental outcomes. In other words, the subsidy addresses the LBD externality, but not the climate externality. The key mechanism we highlight in the simple model is independent of LBD. We also stress that the detrimental outcomes associated with clean energy subsidies do not rely on the presence of distortionary taxation, a market failure that would decrease the effectiveness of subsidies relative to carbon taxes.

## 2.5 Substitution and Scale Effects

This section further examines why  $f_{cd}$  plays such an important role for the effectiveness of clean subsidies. It also pinpoints the crucial difference between dirty energy taxes and clean energy subsidies, connecting back to the existing literature’s intuition regarding the inefficiency of clean subsidies (e.g., Newell et al., 2019). To accomplish these goals, we decompose the dirty energy response to clean subsidies into a *substitution effect* and a production *scale effect*. We examine how  $f_{cd}$  operates through both channels.

Our approach relates closely to the well-known decomposition of demand into an income and a substitution effect using the Slutsky equation. We are interested in the representative firm’s factor demand for dirty energy, which is a function of the energy prices  $e_d(p_d, p_c + \tau_c)$ .<sup>3</sup> We define the *conditional* factor demand for dirty energy as the function  $e_d^\dagger(p_d, p_c + \tau_c; q)$ , which characterizes the firm’s demand for dirty energy given prices and conditional on a given output level  $q$ . Conditional factor demand takes the role of Hicksian demand in consumer theory and allows us to single out the pure substitution effect (Puu, 1966). We write the representative firm’s profit-maximizing production level as  $q(p_d, p_c + \tau_c)$ . Then, we can decompose the impact of a clean energy subsidy on dirty energy use as

$$\underbrace{\frac{de_d(p_d, p_c + \tau_c)}{d\tau_c}}_{\text{Overall effect}} = \underbrace{\frac{\partial e_d^\dagger(p_d, p_c + \tau_c; q)}{\partial \tau_c}}_{\text{Substitution effect}} + \underbrace{\frac{\partial e_d^\dagger(p_d, p_c + \tau_c; q)}{\partial q} \frac{\partial q(p_d, p_c + \tau_c)}{\partial \tau_c}}_{\text{Scale effect}}. \quad (13)$$

The *substitution effect* captures the reallocation between clean and dirty energy, keeping overall production constant. The *scale effect* has two components that jointly character-

---

<sup>3</sup>We let the labor market clear. As a result, the price of labor is endogenous, and the representative firm’s demand for dirty energy determines equilibrium emissions.

ize the consequence of changing production levels. The first component of the scale effect characterizes the increase in dirty energy resulting from a production increase. The second component of the scale effect captures the overall change in output resulting from a change in policy.

It is straightforward that the substitution effect links directly to the complementarity of clean and dirty energy. We will show that the complementarity embodied in  $f_{cd}$  also influences the production scale effect. The scale effect highlights the difference between a dirty energy tax and a clean energy subsidy. The tax and the subsidy both decrease the relative price of clean energy, triggering similar substitution effects. But, the two policies have opposite implications for the scale effect. A clean subsidy increases energy use while a dirty tax decreases energy use.

In our setting, it is easier to interpret the different components of equation (13) if we multiply the decomposition by the price of dirty energy, stating the changes in absolute units. Appendix A.4 derives a general expression for substitution and production scale effects. We find

$$\text{Substitution effect: } \left( \underbrace{-\frac{f_{cc}}{f_c} + \left(-\frac{f_{dd}}{f_d}\right) \frac{f_c}{f_d}}_{\text{decreasing marginal returns}} + \underbrace{2 \frac{f_{cd}}{f_d}}_{\text{complementarity}} \right)^{-1} > 0.$$

The substitution effect is positive for an increase in the relative price of dirty energy and, hence, always reduces dirty energy use in response to a clean subsidy. The first two terms of the substitution effect measure the (normalized) concavity of the production function in clean and dirty energy. Substituting away from either input is harder when marginal productivity falls more quickly in the individual inputs. We are particularly interested in the last term. Gross complementarity accelerates the decrease of marginal utility when substituting away from one of the inputs, here dirty. Thus, substituting clean for dirty energy is harder if the two energy sources are gross complements.

The scale effect is composed of two terms:

$$\text{Scale effect: } \left( 1 + \frac{\overbrace{-f_{dd} \frac{f_c}{f_d} + f_{cd}}^{\text{decreasing returns dirty}}}{\underbrace{-f_{cc} \frac{f_d}{f_c} + f_{cd}}_{\text{decreasing returns clean}}} \right)^{-1} \times \left( - \frac{\overbrace{f_c + f_d \frac{f_{cd}}{-f_{dd}}}^{\text{marginal productivity clean energy}}}{\underbrace{(-f_{cc}) - (-f_{dd}) \left(\frac{f_{cd}}{-f_{dd}}\right)^2}_{\text{decreasing returns clean energy}}} \right) \quad (14)$$

Overall, the scale effect is negative when  $f$  exhibits constant returns to scale. In response to a clean subsidy, it increases dirty emissions, counteracting the substitution effect. For a dirty energy tax, by contrast, it reinforces the substitution effect. The final term in expression (14) explains why the scale effect is so sensitive to  $f_{cd}$ . First, in the numerator, complementarity between clean and dirty ( $f_{cd}$ ) increases the effective marginal productivity of the subsidized clean energy because an increase in clean energy also increases the productivity of dirty energy. Second, in the denominator, the complementarity moderates the decrease in the returns to scale because the dirty energy input increases together with the subsidized clean energy input. Both of the channels amplify the increase in energy use.<sup>4</sup>

The trade-off between the two effects characterizes the

$$\text{Overall effect: } -\frac{f_d f_{cd}}{f_{dd} f_{cc} - f_{cd}^2} \begin{matrix} \geq \\ \leq \end{matrix} 0,$$

whose sign depends only on the complementarity embodied in  $f_{cd}$ . As we observed previously, emissions decrease under a clean subsidy if and only if  $f_{cd} < 0$ .

## 2.6 Calibration with nested CES-in-CD production

As is standard in macro climate-economy models (e.g., Golosov et al., 2014; Hassler et al., 2021b), consider a nested production structure where gross output,

$$q = g(l, e) = l^{1-\nu} e^\nu, \quad (15)$$

relies on labor and *energy services*,

$$e = h(e_d, e_c) = \left( \omega e_d^{\frac{\epsilon-1}{\epsilon}} + (1-\omega) e_c^{\frac{\epsilon-1}{\epsilon}} \right)^{\frac{\epsilon}{\epsilon-1}}. \quad (16)$$

Here,  $\omega \in (0, 1)$  is a distribution parameter,  $\frac{\partial \ln q}{\partial \ln e} = \nu \in (0, 1)$  is the elasticity of output with respect to energy services,  $\frac{\partial \ln \frac{e_d}{e_c}}{\partial \ln \frac{p_c}{p_d}} = \epsilon \in (0, \infty)$  is the elasticity of substitution between clean and dirty energy, and  $f(l, e_d, e_c) = g(l, h(e_d, e_c))$ . We ignore capital because this is a static model. If  $p_e$  is the price of energy services, then  $\frac{\partial \ln e}{\partial \ln p_e} = (1-\nu)^{-1}$  is the price elasticity of

---

<sup>4</sup>Interestingly, the dependence of the first term in expression (14) on  $f_{cd}$  is ambiguous. This term pins down the increase in dirty energy use in response to a production increase. If clean energy's productivity falls faster than dirty energy's productivity, then dirty energy use expands more strongly with a production increase. Taken together, under the assumption of constant returns, the magnitude of the joint expression (14) always increases in the magnitude of  $f_{cd}$ , qualitatively following the described impact of  $f_{cd}$  on the second term (see Appendix A.4).

demand for energy services.

This production structure directly separates the two channels discussed in the previous section, and it shows the close relationship between these channels and the existence of gross complementarity in the aggregate production function. The substitution effect is proportional to  $\epsilon$ , and the production scale effect is proportional to  $(1 - \nu)^{-1}$ . In addition,<sup>5</sup>

$$f_{cd} > 0 \iff (1 - \nu)^{-1} > \epsilon. \quad (18)$$

When  $\epsilon$  is low, the two goods are more complementary in energy service production ( $h_{cd}$  is larger), and an increase in clean energy has a greater impact on the marginal product of dirty energy. When  $\nu$  is low, an increase in clean energy decreases the marginal product of energy services more significantly ( $g_{ee}$  is more negative). The relative strength of these two forces determines the overall emissions impact of an increase in clean energy subsidies. To further highlight these competing forces, we note that equation (13) becomes

$$\frac{d \ln e_d}{d \ln(p_c + \tau_c)} = (\epsilon - (1 - \nu)^{-1}) \frac{(p_c + \tau_c)e_c}{(p_c + \tau_c)e_c + p_d e_d} \quad (19)$$

when utilizing these standard functional forms.

Given the small number of parameters, it is straightforward to compare  $\epsilon$  and  $(1 - \nu)^{-1}$  to estimates from the existing literature. With perfect competition,  $\nu$  is the energy share of gross output. Based on Casey (forthcoming), we consider a value of  $\nu = 0.08$ . In this case,  $f_{cd} > 0$  if and only if  $\epsilon < 1.09$ . Many macroeconomic climate-economy models, including the influential work of Golosov et al. (2014) and handbook chapters by Hassler et al. (2016) and Hassler and Krusell (2018), use a value at or slightly below  $\epsilon = 1$ , based on evidence from a meta-study by Stern (2012). At these values,  $f_{cd} > 0$  and it is optimal to tax, rather than subsidize, clean energy.

Papageorgiou et al. (2017) estimate the elasticity of substitution between clean and dirty sources of energy for several sectors. Unfortunately, they do not provide an economy-wide estimate that is directly applicable to a macroeconomic model. They do, however, find an elasticity of around 2 for the electricity sector and values of in the range (1.5, 3) for non-

---

<sup>5</sup>It is tedious but straightforward to show that:

$$f_{cd} = ((1 - \nu)^{-1} - \epsilon) \left( \frac{\nu(1 - \nu)}{\epsilon} \right) \left( \frac{1}{e_d e_c} \right) \left( \frac{\omega e_d^{\frac{\epsilon-1}{\epsilon}}}{\omega e_d^{\frac{\epsilon-1}{\epsilon}} + (1 - \omega) e_c^{\frac{\epsilon-1}{\epsilon}}} \right) \left( \frac{(1 - \omega) e_c^{\frac{\epsilon-1}{\epsilon}}}{\omega e_d^{\frac{\epsilon-1}{\epsilon}} + (1 - \omega) e_c^{\frac{\epsilon-1}{\epsilon}}} \right) q. \quad (17)$$

electricity sectors.<sup>6</sup> [Acemoglu et al. \(2019\)](#) use  $\epsilon = 1.85$  as a summary of the findings from [Papageorgiou et al. \(2017\)](#) that can be used in a macro model. At this value,  $f_{cd} < 0$  and the social planner prefers to subsidize clean energy.

### 3 Quantitative Model

We now specify a dynamic model that is more amenable to quantitative analysis.

#### 3.1 Structure

Final output ( $Y_t$ ) is a Cobb-Douglas combination of capital ( $K_{y,t}$ ), labor ( $L_{y,t}$ ), and energy services ( $E_{y,t}$ ):

$$Y_t = K_{y,t}^\alpha E_{y,t}^\nu (A_{y,t} L_{y,t})^{1-\alpha-\nu}, \quad (20)$$

where  $\alpha, \nu \in (0, 1)$ , and the productivity term ( $A_{y,t}$ ) grows at a constant rate  $g_y$ . The production function for energy services is

$$E_t = \left( \omega^{\frac{1}{\epsilon}} Z_{d,t}^{\frac{\epsilon-1}{\epsilon}} + (1-\omega)^{\frac{1}{\epsilon}} Z_{c,t}^{\frac{\epsilon-1}{\epsilon}} \right)^{\frac{\epsilon}{\epsilon-1}}, \quad (21)$$

where  $\omega \in (0, 1)$ ,  $\epsilon \in [0, \infty)$ ,  $Z_{d,t}$  is dirty energy, and  $Z_{c,t}$  is clean energy. The energy extraction technology is

$$Z_{j,t} = K_{j,t}^\alpha E_{j,t}^\nu (A_{j,t} L_{j,t})^{1-\alpha-\nu}, \quad j = c, d, \quad (22)$$

where  $L_{j,t}$  is labor working in energy sector  $j$  at time  $t$ , and  $K_{j,t}$  is capital used in energy sector  $j$  at time  $t$ , and  $E_{j,t}$  is energy services used in energy sector  $j$  at time  $t$ . Productivity terms  $A_{d,t}$  and  $A_{c,t}$  grow at exogenous rates  $g_d$  and  $g_c$ , respectively. Including energy services in the primary energy production function is somewhat unusual, but increases realism. We follow the structural change literature and assume factor shares are the same in all sectors ([Herrendorf et al., 2014](#)). This specification is isomorphic to one in which there is an exogenous extraction cost paid in final goods, implying that this is the dynamic analogue of our simple model.

---

<sup>6</sup>The average across sectors is different than the economy-wide elasticity, because the economy-wide elasticity must take into account reallocation across sectors ([Oberfield and Raval, 2021](#)).

The market clearing conditions for aggregate capital ( $K_t$ ) and aggregate labor ( $L_t$ ) are

$$K_t = K_{y,t} + K_{d,t} + K_{c,t} \quad (23)$$

$$L_t = L_{y,t} + L_{d,t} + L_{c,t}. \quad (24)$$

Aggregate labor grows at exogenous rate  $n$ . Capital evolves according to

$$K_{t+1} = Y_t - C_t + (1 - \delta)K_t, \quad (25)$$

where  $\delta \in (0, 1)$  is the depreciation rate. The market clearing condition for output is

$$Y_t = w_t L_t + \rho_t K_t, \quad (26)$$

where  $w_t$  is the wage, and  $\rho_t$  is the rental rate, and  $r_t = \rho_t - \delta$  is the real interest rate.

The representative household has lifetime utility

$$U = \sum_{t=0}^{\infty} \beta^t \left( L_t \ln(C_t) + m \sum_{\tilde{i}=0}^t \eta_{\tilde{i}} Z_{d,\tilde{i}} \right), \quad (27)$$

where  $\beta \in (0, 1)$  is the discount rate,  $m > 0$  is the marginal damage from carbon emissions per period, and

$$\eta_t = (1 + g_\eta) \eta_{t-1} \quad (28)$$

captures exogenous changes in the carbon-intensity of fossil fuel use ([Krusell and Smith Jr, 2022](#)). In other words,  $g_\eta$  captures substitution between different fossil fuels, which happens outside of our model and is unaffected by a clean energy subsidy. The representative household ignores the utility cost of dirty energy when making consumption and investment decisions. The household budget constraint is

$$C_t + K_{t+1} = w_t L_t + (1 + r_t) K_t. \quad (29)$$

[Golosov et al. \(2014\)](#) specify a simple climate model where production declines exponentially in carbon concentrations. Combined with log utility and full depreciation, they find that damages from CO<sub>2</sub> are linear in welfare. [Traeger \(2023\)](#) derives the same result for a fully calibrated climate model and partial capital persistence. The intuition for this potentially surprising result is that warming is strongly concave in CO<sub>2</sub>, while damages



Table 1: Model Parameters

Parameter	Value	Description	Source
$\epsilon$	0.95	Clean-Dirty EoS	<a href="#">Goloso et al. (2014)</a>
	1.85		<a href="#">Papageorgiou et al. (2017)</a>
$\nu$	0.08	Energy share of income	<a href="#">Casey (forthcoming)</a>
$\alpha$	0.27	Capital share of income	<a href="#">Jones (2016)</a>
$\omega$	0.60	Distribution parameter	<a href="#">Goloso et al. (2014)</a>
$\delta$	0.27	Depreciation rate	Standard
$n$	0.05	Population growth	EIA
$g$	0.10	Income per capita growth	<a href="#">Jones (2016)</a>
$\beta$	0.88	Discount factor	<a href="#">Goloso et al. (2014)</a>
$g_\eta$	-0.14	Fall in carbon intensity of $Z_d$	EIA
$m$	0.24	Flow damages	Calibrated

are convex in the temperature increase. Our specification directly assumes this linearity of damages from carbon emissions. For our purposes, there are several benefits to this simple specification. First, we study outcomes in the U.S. With linear damages, the welfare cost of U.S. emissions is independent of emissions from elsewhere in the world and emissions that occur before  $t = 0$ . Second, recent evidence suggests that non-market damages account for a large portion of the social cost of carbon (e.g., [Climate Impact Lab, 2022](#); [Rennert et al., 2022](#); [EPA, 2022](#)), which are easily incorporated into  $m$ .

There are two possible policy interventions. We mainly study constant value-added subsidies for clean energy,  $\tau_c \in (-1, 0)$ . So,  $(1 + \tau_c)p_{c,t}$  is the policy-inclusive price of energy paid by the energy service producer, and  $p_{c,t}$  is the price received by the primary energy producer. We also compare the impacts of these clean energy subsidies to a constant value-added tax on dirty energy, where  $(1 + \tau_d)p_{d,t}$  is the policy-inclusive price of dirty energy and  $\tau_d > 0$ . All agents in the economy take policy as given.

### 3.2 Calibration

We calibrate the model to the United States. The time step is five years. We simulate the model over 1000 years and study outcomes over the first 50. All parameter values are shown in Table 1.

We consider both  $\epsilon = 0.95$  from [Goloso et al. \(2014\)](#) and  $\epsilon = 1.85$  from [Papageorgiou et al. \(2017\)](#). Based on [Goloso et al. \(2014\)](#), we set  $\omega = 0.60$ . In our model, the effective discount rate for consumption is  $\beta(1 + n)$ , which we calibrate to  $0.985^5 = 0.93$ . We take  $n = 0.05$  (1%/year), which gives  $\beta = 0.88$ . We also take  $\nu = 0.08$  from [Casey \(forthcoming\)](#),

and  $\alpha = 0.27$ , which gives a standard labor share of  $(1 - \alpha - \nu) = 0.63$  (Gollin, 2002; Jones, 2016). We set  $\delta = 0.27$  (6%/year). We assume that all technologies ( $A_{j,t}$  for  $j = y, d, c$ ) grow at  $g_j = 0.10$  (2%/year), which matches estimates of long-run income per capital growth from Jones (2016). To set units, we normalize  $A_{y,0} = A_{d,0} = A_{c,0} = L_0 = 1$ .

We set  $g_\eta = -0.14$  (2.3%/year) to match data on the declining carbon intensity of fossil fuels (Energy Information Administration, 2019). Combining the social cost of carbon estimate of \$185/tCO<sub>2</sub> from Rennert et al. (2022) with data on emissions from Energy Information Administration (2019) implies that the monetary cost of U.S. emissions in 2020 was equal to 4.0% of GDP. We set  $m = 0.24$  to match this value.

### 3.3 Solution Method

Since climate damages do not affect the dynamics of the macroeconomic variables, we can solve the underlying growth model with standard computational tools. We use *Dynare* (Adjemian et al., 2011). Appendix Section B shows the equations used in the computational solution.

## 4 Quantitative Results

### 4.1 Impacts of the Inflation Reduction Act

Clean energy subsidies are a central component of the Inflation Reduction Act, which was recently passed in the United States (White House, 2023). The subsidies take two forms: tax credits per kWh of energy production (*production tax credits*, PTC) or tax credits for investment by clean energy firms (*investment tax credits*, ITC). Producers can choose which subsidy to take. The size of the subsidies increases substantially if firms meet certain labor requirements. The subsidies also increase in size if clean energy production takes place in vulnerable communities or meets domestic content requirements. The policies are currently set to expire in 2035.

We model the IRA as a PTC. We assume that it is announced and implemented with full commitment in 2025 and that it lasts forever. Bistline et al. (forthcoming) calculate the effects of the IRA on clean energy prices, allowing the form of the credit to differ by sector and assuming that all firms receive the labor bonus, but not the other two bonuses. They find that the IRA will lower the prices of utility-scale solar and offshore wind by approximately 20 percent in 2023 and have a slightly smaller effect on the price of onshore wind. We simulate

a subsidy of 20 percent. Given that not all firms will receive the bonus, we think this is likely to be an overestimate of the effect of the IRA on clean energy prices.

#### 4.1.1 Results with baseline parameters

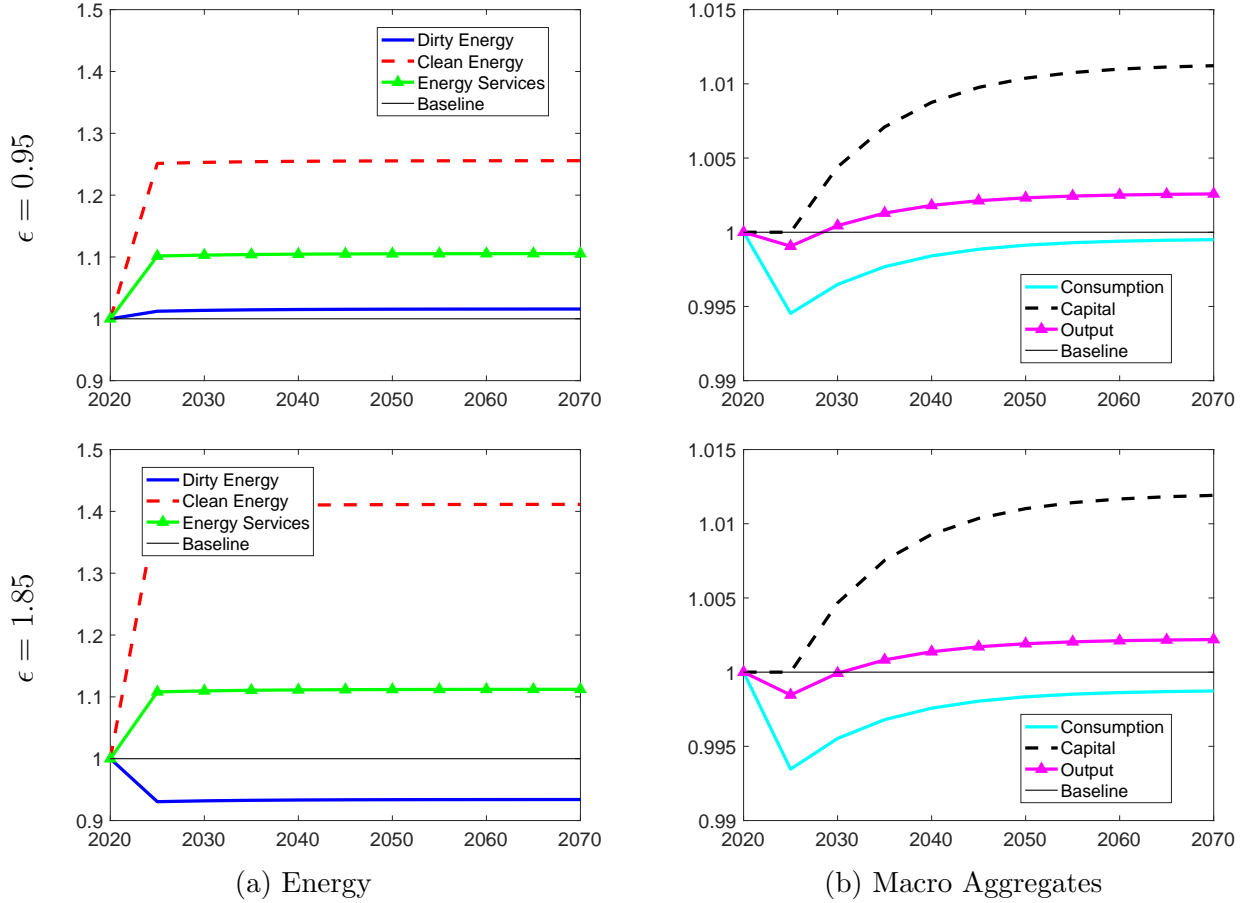


Figure 1: Impacts of the IRA clean energy subsidies

Note: All outcomes are shown relative to laissez-faire levels.

The top row of Figure 1 shows the simulated impacts of the IRA clean energy subsidies using the value of  $\epsilon = 0.95$  from Golosov et al. (2014) and Stern (2012). In all figures, outcomes are shown relative to laissez-faire levels. The panel on the top left shows that the subsidies increase clean energy use by approximately twenty-five percent and dirty energy use by 1.6 percent. The change in total energy use is just over ten percent. These results are consistent with our earlier analysis of the static model. Since clean and dirty energy are gross complements, clean energy subsidies increase dirty energy use. The strength of this

force is weak and the overall change in dirty energy is small, because the parameter values are close to  $\epsilon \approx (1 - \nu)^{-1}$  where  $f_{cd} \approx 0$ .

The panel on the top right shows the path of macroeconomic aggregates. The energy sector is a small fraction of the economy, and even large changes in energy prices have little spillover to long-run economic dynamics. The small change in macro aggregates explains why energy use quickly adjusts to the new BGP level. Since the policy is unexpected, the capital stock is unaffected in the year the policy is implemented. In the absence of policy intervention, the competitive equilibrium would maximize output in the initial year given the quantity of available inputs. So, the policy intervention, which alters relative prices, leads to a small decrease in output in the initial year of the policy. The clean energy subsidy increases the tax-inclusive return to investment, which increases the saving rate immediately and capital and output in subsequent years, though the effect is again quantitatively small. Consumption initially dips due to the increased saving rate and decreased output, and it then converges back almost to its initial level.

These results imply that the subsidy decreases welfare. It simultaneously increases dirty energy production and decreases consumption. Given that neither quantity deviates much from its laissez-faire value, the welfare impacts of the policy are small. With our calibrated value of  $m$ , moving from the laissez-faire equilibrium to the equilibrium with clean energy subsidies decreases welfare as much as decreasing consumption by 0.16 percent in every period in the laissez-faire equilibrium.

#### 4.1.2 Results with alternate parameters

The bottom row of Figure 1 simulates the impacts of the twenty percent subsidy using the value of  $\epsilon = 1.85$  from [Papageorgiou et al. \(2017\)](#). The panel on the left shows the path of energy use. With this higher elasticity, clean and dirty energy are gross substitutes. The policy increases clean energy use and decreases dirty energy use. This is again consistent with the static model. Clean energy use is about forty percent higher than on the laissez-faire BGP, but dirty energy use is only 6.6 percent lower. Total energy services production is about ten percent higher.

The panel on the right shows the macroeconomic aggregates. Capital increases by around one percent, while output initially decreases and subsequently increases relative to laissez-faire. Consumption is slightly below its laissez-faire level. Moving from the laissez-faire equilibrium to the equilibrium with clean energy subsidies has essentially no impact on welfare. The results from the simple model indicate that a subsidy can increase welfare

when the elasticity of substitution between clean and dirty energy is sufficiently high, but they do not imply that *any* subsidy will increase welfare. As we discuss in the next section, the twenty percent subsidy is too high and the benefits of lower emissions are almost exactly offset by the inefficient reallocation of inputs away from final good production and towards energy production.

## 4.2 Best Constant Subsidy with $\epsilon = 1.85$

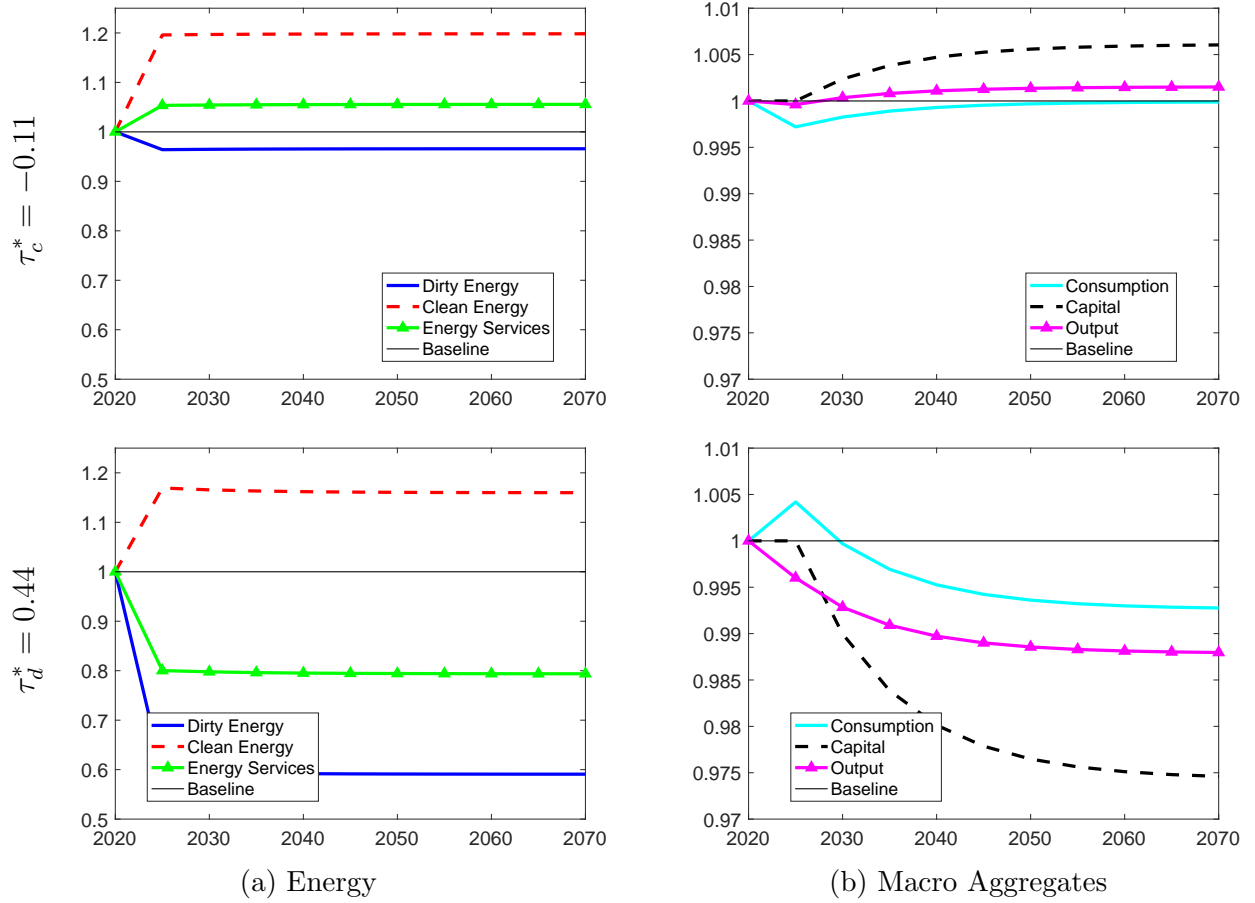


Figure 2: Best constant subsidies and taxes with  $\epsilon = 1.85$

Note: All outcomes are shown relative to laissez-faire levels.

In this section, we investigate the impacts of the constant clean energy subsidy that maximizes welfare in the absence of a carbon price. With  $\epsilon = 0.95$ , subsidies necessarily decrease welfare. So, we focus on the higher value of  $\epsilon = 1.85$ . Welfare is maximized at

$\tau_c^* = -0.11$ , which is smaller than the IRA subsidies of  $\tau_c = -0.20$ .<sup>7</sup> As a result, the change in dirty energy use, 3.4 percent, is smaller in this case. The top row of Figure 2 shows the resulting dynamics, which are similar to the bottom row in Figure 1, but more muted. The welfare gain is 0.05 percent CEV. The increase in welfare and decrease in emissions are both consistent with the results from the simple model.

### 4.3 Dirty energy tax with $\epsilon = 1.85$

In this section, we study the impacts of a dirty energy tax with  $\epsilon = 1.85$ . To ensure a reasonable comparison to the constant subsidy for clean energy used in the previous section, we examine a constant tax on dirty energy, despite the changing carbon-intensity of dirty energy. The constant tax that maximizes welfare is  $\tau_d^* = 0.44$ . Although it is not the first-best policy response, the tax is a significant improvement over a clean subsidy. Moving from laissez-faire to a dirty energy tax increases welfare as much as increasing consumption by 0.7 percent CEV. This is an order of magnitude larger than the gain from the best clean subsidy.

The bottom row of Figure 2 shows the impact of the dirty energy tax. Dirty energy use falls by 40 percent, which is an order of magnitude larger than the impacts of the best clean subsidy. Unlike a subsidy, a tax on dirty energy increases the price of the energy services, and the consumption of energy services decreases by 20 percent relative to laissez faire. This difference between clean subsidies and dirty taxes comes from the differing signs on the scale effect. Clean energy use increases with both the tax and the subsidy, because of the substitution effect.

As shown in the panel on the right, the tax also leads to qualitatively different macroeconomic dynamics. The tax leads to a fall of approximately 2.5 percent in capital and a 1 percent fall in output. Consumption falls by about 0.75 percent with the tax and is virtually unchanged with the subsidy. As noted above, however, welfare is significantly higher under the tax. For a given reduction in consumption, the tax can achieve a much greater reduction in dirty energy use, leading to higher welfare.

---

<sup>7</sup>Appendix Figure B.1 plots the objective function for the best constant clean subsidy and dirty tax. It shows that there is a unique optimum in each case.

## 5 Discussion and Conclusion

### 5.1 Policy implications

Our results suggest that the clean energy subsidies in the IRA will have limited impacts on emissions and welfare. The sign of the impacts differs across plausible parameter values, but the magnitude is consistently small in our simulations. These outcomes reflect the limited effectiveness of clean energy subsidies, rather than poor implementation in the IRA. At standard parameter values, any subsidy decreases welfare. At alternative plausible values, the best possible constant subsidy yields only modest emission reductions and welfare increases relative to a no-policy scenario. The best possible subsidy yields large increases in emissions and decreases in welfare relative to the best constant tax on dirty energy. Together, these results suggest that moving U.S. climate policy to a carbon pricing approach could generate large emissions reductions and welfare gains.

### 5.2 Comparison with earlier work

There have been several engineering analyses of the Inflation Reduction Act. Here, we focus on the REGEN model constructed by the Electric Power Research Institute (EPRI, 2020), which is used in the economic analysis by Bistline et al. (forthcoming). The REGEN model predicts that the IRA will decrease emissions by 6-11 percent relative to laissez-faire. This is similar to our predictions with  $\epsilon = 1.85$ , but our predictions with  $\epsilon = 0.95$  have the opposite sign. It is tempting to conclude that the REGEN must implicitly have a high elasticity of substitution, but this conclusion overlooks another important difference, namely the treatment of energy demand. In our model, subsidies decrease the price of energy services, which in turn increases the equilibrium quantity of energy services produced. This effect is determined by  $\nu$ , which is calibrated to match long-run patterns in aggregate energy use and expenditure (Atkeson and Kehoe, 1999; Hassler et al., 2021a; Casey, forthcoming). In REGEN, the demand for energy services is exogenous, implying that it shuts down an important channel by which subsidies increase the quantity of energy services and, consequently, dirty energy use.<sup>8</sup>

---

<sup>8</sup>In REGEN, the demand for energy services is exogenous, but this demand can be satisfied with different levels of efficiency (e.g., miles-per-gallon). This incorporates some, but not all, of the ways that total energy production may increase as a result of clean energy subsidies. For example, it does not incorporate the increase in miles driven that may occur when electricity is cheaper.

### 5.3 The elasticity of substitution between clean and dirty energy

The welfare impacts of a clean energy subsidy depend importantly on the elasticity of substitution between clean and dirty energy. Unfortunately, there is considerable uncertainty surrounding this parameter. This is true for at least two reasons. First, estimating any substitution elasticity is notoriously difficult and generally requires exogenous variation in one or more prices (León-Ledesma et al., 2010). Indeed, climate-economy models require macro elasticities that are complicated aggregates of firm and sector-level elasticities, which can be easier to estimate (Papageorgiou et al., 2017; Oberfield and Raval, 2021). Second, knowing this elasticity is often not required to determine the first-best carbon tax (e.g., Golosov et al., 2014; Traeger, 2023), which may explain why this important parameter has not received more attention.

Our results imply that subsidies will be a more effective way to combat climate change if there are complementary innovations that increase the elasticity of substitution between energy sources. We have treated the elasticity of substitution between energy types as a structural parameter. The elasticity of substitution between energy sources is determined in part by the facts that renewables are intermittent and their efficiency varies across space. Therefore, significant breakthroughs in storage and transmission technology are expected to raise the elasticity. The IRA includes incentives meant to improve storage technology, and future analyses quantifying the impact of these policies would make an important contribution to our overall understanding of US climate policy. Indeed, our results suggest that improvements in storage and transmission are essential to making clean energy subsidies an effective tool for reducing emissions and increasing welfare.

## References

- ACEMOGLU, D., D. HEMOUS, L. BARRAGE, P. AGHION ET AL. (2019): “Climate change, directed innovation, and energy transition: The long-run consequences of the shale gas revolution,” in *2019 Meeting Papers* (1302), Society for Economic Dynamics.
- ADJEMIAN, S., H. BASTANI, M. JUILLARD ET AL. (2011): “Dynare: Reference Manual Version 4,” Dynare Working Papers 1, CEPREMAP.
- AIRAUDO, F. S., E. PAPPAS, AND H. D. SEOANE (2023): “The green metamorphosis of a small open economy.”



- ATKESON, A., AND P. J. KEHOE (1999): “Models of energy use: Putty-putty versus putty-clay,” *American Economic Review*, 89, 1028–1043.
- BARRAGE, L. (2020): “Optimal dynamic carbon taxes in a climate–economy model with distortionary fiscal policy,” *Review of Economic Studies*, 87, 1–39.
- BARRAGE, L., AND W. D. NORDHAUS (2023): “Policies, Projections, and the Social Cost of Carbon: Results from the DICE-2023 Model.”
- BAUMOL, W. J., AND W. E. OATES (1988): *The theory of environmental policy*, 2nd edition, 212–234, Cambridge: Cambridge University Press.
- BENNEAR, L. S., AND R. N. STAVINS (2007): “Second-best theory and the use of multiple policy instruments,” *Environmental and Resource Economics*, 37, 111–129.
- BISTLINE, J., N. MEHROTRA, AND C. WOLFRAM (forthcoming): “Economic Implications of the Climate Provisions of the Inflation Reduction Act,” *Brookings Papers on Economic Activity*.
- CASEY, G. (forthcoming): “Energy Efficiency and Directed Technical Change: Implications for Climate Change Mitigation,” *Review of Economic Studies*.
- CLIMATE IMPACT LAB (2022): “Data-driven Spatial Climate Impact Model User Manual, Version 092022-EPA,” available at [https://www.epa.gov/system/files/documents/2022-11/epa\\_scghg\\_report\\_draft\\_0.pdf](https://www.epa.gov/system/files/documents/2022-11/epa_scghg_report_draft_0.pdf).
- CRUZ, J.-L., AND E. ROSSI-HANSBERG (forthcoming): “The Economic Geography of Global Warming,” *Review of Economic Studies*.
- ENERGY INFORMATION ADMINISTRATION (2019): “State Energy Data System,” <https://www.eia.gov/state/seds/seds-data-complete.php> (accessed 8/5/19).
- EPA (2022): “EPA External Review Draft of Report on the Social Cost of Greenhouse Gases: Estimates Incorporating Recent Scientific Advances,” *Supplementary Material for the Regulatory Impact Analysis for the Supplemental Proposed Rulemaking, “Standards of Performance for New, Reconstructed, and Modified Sources and Emissions Guidelines for Existing Sources: Oil and Natural Gas Sector Climate Review”*, available at [https://www.epa.gov/system/files/documents/2022-11/epa\\_scghg\\_report\\_draft\\_0.pdf](https://www.epa.gov/system/files/documents/2022-11/epa_scghg_report_draft_0.pdf).

- EPRI (2020): “US-REGEN Model Documentation,” *Electric Power Research Institute*, available at <https://www.epri.com/research/products/000000003002016601>.
- FISCHER, C., AND R. G. NEWELL (2008): “Environmental and technology policies for climate mitigation,” *Journal of environmental economics and management*, 55, 142–162.
- FULLERTON, D., AND A. WOLVERTON (2000): “Two generalizations of a deposit–refund system,” *American Economic Review*, 90, 238–242.
- (2005): “The two-part instrument in a second-best world,” *Journal of Public Economics*, 89, 1961–1975.
- GERLAGH, R., AND B. VAN DER ZWAAN (2006): “Options and instruments for a deep cut in CO<sub>2</sub> emissions: Carbon dioxide capture or renewables, taxes or subsidies?” *The Energy Journal*, 27.
- GILLINGHAM, K., AND J. H. STOCK (2018): “The cost of reducing greenhouse gas emissions,” *Journal of Economic Perspectives*, 32, 53–72.
- GOLLIN, D. (2002): “Getting income shares right,” *Journal of Political Economy*, 110, 458–474.
- GOLOSOV, M., J. HASSLER, P. KRUSELL, AND A. TSYVINSKI (2014): “Optimal taxes on fossil fuel in general equilibrium,” *Econometrica*, 82, 41–88.
- GOULDER, L. H., AND I. W. PARRY (2008): “Instrument choice in environmental policy,” *Review of Environmental Economics and Policy*, 2, 152–174.
- GUGLER, K., A. HAXHIMUSA, AND M. LIEBENSTEINER (2021): “Effectiveness of climate policies: Carbon pricing vs. subsidizing renewables,” *Journal of Environmental Economics and Management*, 106, 102405.
- HASSLER, J., AND P. KRUSELL (2018): “Environmental macroeconomics: the case of climate change,” in *Handbook of Environmental Economics Volume 4*: Elsevier, 333–394.
- HASSLER, J., P. KRUSELL, AND C. OLOVSSON (2021a): “Directed technical change as a response to natural-resource scarcity,” *Journal of Political Economy*, 129, 3039–3066.
- (2021b): “Suboptimal Climate Policy,” *Journal of the European Economic Association*.

- HASSLER, J., P. KRUSELL, C. OLOVSSON, AND M. REITER (2020): “On the effectiveness of climate policies,” *Working paper*.
- HASSLER, J., P. KRUSELL, AND A. A. SMITH JR (2016): “Environmental macroeconomics,” in *Handbook of Macroeconomics* Volume 2: Elsevier, 1893–2008.
- HERRENDORF, B., R. ROGERSON, AND Á. VALENTINYI (2014): “Growth and structural transformation,” in *Handbook of Economic Growth* Volume 2: Elsevier, 855–941.
- HOEL, M. (2012): “Second-best climate policy,” *Working Paper*.
- HOLLAND, S. P., J. E. HUGHES, AND C. R. KNITTEL (2009): “Greenhouse gas reductions under low carbon fuel standards?” *American Economic Journal: Economic Policy*, 106–146.
- JONES, C. I. (2016): “The facts of economic growth,” in *Handbook of Macroeconomics* Volume 2: Elsevier, 3–69.
- KALKUHL, M., O. EDENHOFER, AND K. LESSMANN (2013): “Renewable energy subsidies: Second-best policy or fatal aberration for mitigation?” *Resource and Energy Economics*, 35, 217–234.
- KRUSELL, P. (2023): “Climate Policy: Another Case for “Whatever It Take”?”, The 2023 Manchot Lecture, University of Bonn, November 16, 2023.
- KRUSELL, P., AND A. A. SMITH JR (2022): “Climate change around the world,” *NBER Working Paper*.
- LEÓN-LEDESMA, M. A., P. MCADAM, AND A. WILLMAN (2010): “Identifying the elasticity of substitution with biased technical change,” *American Economic Review*, 100, 1330–57.
- NEWELL, R. G., W. A. PIZER, AND D. RAIMI (2019): “US federal government subsidies for clean energy: Design choices and implications,” *Energy Economics*, 80, 831–841.
- NORDHAUS, W. D. (1993): “Optimal greenhouse-gas reductions and tax policy in the “DICE” model,” *American Economic Review*, 83, 313–317.
- NORDHAUS, W. D., AND J. BOYER (2000): *Warming the world: Economic models of global warming*: MIT press.

- OBERFIELD, E., AND D. RAVAL (2021): “Micro data and macro technology,” *Econometrica*, 89, 703–732.
- PALMER, K., AND D. BURTRAW (2005): “Cost-effectiveness of renewable electricity policies,” *Energy economics*, 27, 873–894.
- PAPAGEORGIOU, C., M. SAAM, AND P. SCHULTE (2017): “Substitution between clean and dirty energy inputs: A macroeconomic perspective,” *Review of Economics and Statistics*, 99, 281–290.
- PUU, T. (1966): “Les effets de substitution et d’expansion dans la théorie de la production,” *Revue d’économie politique*, 76, 57–91.
- RENNERT, K., F. ERRICKSON, B. C. PREST ET AL. (2022): “Comprehensive evidence implies a higher social cost of CO<sub>2</sub>,” *Nature*, 610, 687–692.
- REZAI, A., AND F. VAN DER PLOEG (2017): “Second-best renewable subsidies to decarbonize the economy: commitment and the Green Paradox,” *Environmental and Resource Economics*, 66, 409–434.
- STERN, D. I. (2012): “Interfuel substitution: A meta-analysis,” *Journal of Economic Surveys*, 26, 307–331.
- TRAEGER, C. (2023): “ACE–Analytic Climate Economy,” *American Economic Journal: Economic Policy*.
- WHITE HOUSE (2023): “Building a clean energy economy: A Guidebook to the Inflation Reduction Act’s investments in clean energy and climate action,” *WhiteHouse.gov*, available at <https://www.whitehouse.gov/wp-content/uploads/2022/12/Inflation-Reduction-Act-Guidebook.pdf>.

# The Macroeconomics of Clean Energy Subsidies

By: Gregory Casey, Woongchan Jeon, and Christian Traeger

## A Derivations for Static Model

### A.1 Impact of $\tau_c$ on Energy Use

Differentiating (5) and (6) with respect to  $\tau_c$  gives

$$f_{cc} \frac{de_c}{d\tau_c} + f_{cd} \frac{de_d}{d\tau_c} = 1 \quad (\text{A.1})$$

$$f_{cd} \frac{de_c}{d\tau_c} + f_{dd} \frac{de_d}{d\tau_c} = 0, \quad (\text{A.2})$$

which implies

$$\begin{pmatrix} \frac{de_c}{d\tau_c} \\ \frac{de_d}{d\tau_c} \end{pmatrix} = \begin{pmatrix} f_{cc} & f_{cd} \\ f_{cd} & f_{dd} \end{pmatrix}^{-1} \begin{pmatrix} 1 \\ 0 \end{pmatrix} = \begin{pmatrix} \frac{f_{dd}}{f_{cc}f_{dd} - (f_{cd})^2} \\ \frac{-f_{cd}}{f_{cc}f_{dd} - (f_{cd})^2} \end{pmatrix}. \quad (\text{A.3})$$

Note that the denominator is always non-negative. This is because when  $f$  is concave with respect to  $(l, e_d, e_c)$ , the  $k^{\text{th}}$  order leading principal minors of its Hessian

$$\begin{pmatrix} f_{dd} & f_{dc} & f_{dl} \\ f_{cd} & f_{cc} & f_{cl} \\ f_{ld} & f_{lc} & f_{ll} \end{pmatrix} \quad (\text{A.4})$$

have the same sign as  $(-1)^k$ . Therefore,

$$\begin{vmatrix} f_{dd} & f_{dc} \\ f_{cd} & f_{cc} \end{vmatrix} = f_{cc}f_{dd} - (f_{cd})^2 \geq 0. \quad (\text{A.5})$$

Thus,  $\frac{de_c}{d\tau_c} < 0$  and  $\text{sgn} \left( \frac{de_d}{d\tau_c} \right) = -\text{sgn} (f_{cd})$ . In addition, since  $\frac{de_c}{d\tau_c} < 0$ , the inverse relationship  $\tau_c = \tau(e_c)$  is well-defined and monotonic, ruling out the possibility of multiple equilibria.

## A.2 Derivation of the Welfare Impact of $\tau_c$

Combining utility function (3) with market clearing condition (8) gives

$$U = u(f(1, e_d, e_c) - p_d e_d - p_c e_c) - m e_d. \quad (\text{A.6})$$

The welfare effect of clean energy subsidies, measured in units of output, is given by

$$\frac{dU}{d\tau_c} \frac{1}{u'(y)} = (f_c - p_c) \frac{de_c}{d\tau_c} + (f_d - p_d) \frac{de_d}{d\tau_c} - \frac{m}{u'(y)} \frac{de_d}{d\tau_c}. \quad (\text{A.7})$$

Applying the firm's first-order conditions gives

$$\frac{dU}{d\tau_c} \frac{1}{u'(y)} = \tau_c \frac{de_c}{d\tau_c} - \frac{m}{u'(y)} \frac{de_d}{d\tau_c}. \quad (\text{A.8})$$

Totally differentiating (6) delivers

$$f_{cd} de_c + f_{dd} de_d = 0, \quad (\text{A.9})$$

$$\frac{de_d}{de_c} = \frac{-f_{cd}}{f_{dd}}. \quad (\text{A.10})$$

Evaluated at the laissez-faire equilibrium ( $\tau_c = 0$ ), (A.8) and (A.10) yield

$$\left. \frac{dU}{d\tau_c} \frac{1}{u'(y)} \right|_{\tau_c=0} = - \frac{m}{u'(y)} \frac{de_d}{d\tau_c} = - \frac{m}{u'(y)} \frac{de_d}{de_c} \frac{de_c}{d\tau_c} = \frac{m}{u'(y)} \frac{f_{cd}}{-f_{dd}} \left( - \frac{de_c}{d\tau_c} \right). \quad (\text{A.11})$$

Evaluated at the constrained-efficient subsidy ( $\frac{dU}{d\tau_c} = 0$ ), they yield

$$\tau_c^* = \frac{m}{u'(y)} \frac{de_d}{de_c} = \frac{m}{u'(y)} \frac{f_{cd}}{-f_{dd}}. \quad (\text{A.12})$$

### A.3 Baseline model with learning-by-doing

We now consider learning-by-doing (LBD) in clean energy extraction. Let the price of clean energy be a function of the produced quantity,  $p_c = p(e_c)$ , with  $p'(e_c) < 0$ . To ensure a unique interior equilibrium, we assume  $p(0) > 0$ ,  $p''(e_c) > 0$ , and  $\lim_{e_c \rightarrow \infty} p(e_c) = \underline{p} > 0$ .

Since each firm is too small to affect the overall energy price, their first-order conditions are unaffected by the externality. We start by discussing the first-best implementation, which also involves a tax on dirty energy ( $\tau_d > 0$ ). In this case, the firms' first-order conditions are

$$f_d = p_d + \tau_d \quad (\text{A.13})$$

$$f_c = p_c + \tau_c. \quad (\text{A.14})$$

The social planner's problem is

$$\max_{e_d, e_c} u(f(1, e_d, e_c) - p_d e_d - p(e_c) e_c) - m e_d, \quad (\text{A.15})$$

resulting in the first-order conditions

$$f_d = p_d + \frac{m}{u'(y)}, \quad (\text{A.16})$$

$$f_c = p(e_c) + p'(e_c) e_c. \quad (\text{A.17})$$

The first-best outcome requires a clean energy subsidy of  $\tau_c = p'(e_c) e_c$  and a tax on dirty energy equal to  $\tau_d = \frac{m}{u'(y)}$ . Note that neither the tax nor the subsidy alone can implement the first-best allocation. A single policy that generates the correct *relative* price between clean and dirty energy will deliver an inefficient price *level*.

Now, we consider the constrained-efficient subsidy. As in the baseline case, equation (6) delivers the relationship  $e_d = D(e_c)$  with  $D'(e_c) = \frac{f_{cd}}{-f_{dd}}$ . The presence of LBD has not changed our finding that, for  $f_{cd} > 0$ , an increase in clean energy also increases dirty energy use.

As in the baseline case, we have  $\tau_c = \tau(e_c)$ , and we think of the planner as choosing  $e_c^*$  to maximize utility subject to  $e_d = D(e_c)$ . The social planner's problem is

$$\max_{e_c} u(f(1, D(e_c), e_c) - p_d D(e_c) - p(e_c) e_c) - m D(e_c). \quad (\text{A.18})$$

The first order condition is

$$f_c(1, D(e_c^*), e_c^*) - p(e_c^*) - p'(e_c^*)e_c^* + f_d(1, D(e_c^*), e_c^*)D'(e_c^*) - p_d D'(e_c^*) = D'(e_c^*) \frac{m}{u'(y)}. \quad (\text{A.19})$$

Applying the competitive equilibrium conditions gives

$$\tau_c^* = D'(e_c^*) \frac{m}{u'(y)} + p'(e_c^*)e_c^*. \quad (\text{A.20})$$

Since  $p'(e_c^*) < 0$ , the LBD externality makes it more likely that it is optimal to subsidize, rather than tax, clean energy, holding all else equal. If  $f_{cd} > 0$ , it may be optimal to subsidize clean energy, but doing so increases emissions. Put differently, if  $f_{cd} > 0$ , the subsidy addresses the LBD externality, but does nothing to address the climate externality, which is the focus of our analysis. In this sense, adding LBD does not alter the key intuition from the simple model.

## A.4 Decomposition

### A.4.1 Cost-minimizing Input Choices

We analyze the conditional factor demand of the firms given an arbitrary output level  $q > 0$ :

$$(l^\dagger, e_d^\dagger, e_c^\dagger) = \arg \min_{l, e_d, e_c} \{ wl + p_d e_d + (p_c + \tau_c) e_c \} \quad \text{subject to} \quad f(l, e_d, e_c) = q. \quad (\text{A.21})$$

$$\Leftrightarrow (l^\dagger, e_d^\dagger, e_c^\dagger, \lambda^\dagger) = \arg \max_{l, e_d, e_c, \lambda} \{ -(wl + p_d e_d + (p_c + \tau_c) e_c) + \lambda(f(l, e_d, e_c) - q) \}. \quad (\text{A.22})$$

After imposing  $l^\dagger = 1$ , the first-order conditions are

$$p_d = \lambda^\dagger f_d \quad (\text{A.23})$$

$$p_c + \tau_c = \lambda^\dagger f_c \quad (\text{A.24})$$

$$q = f. \quad (\text{A.25})$$

Note that an equilibrium wage is endogenously determined such that  $w = f_l(1, e_d^\dagger, e_c^\dagger)$  for market clearing. Therefore,  $(e_d^\dagger, e_c^\dagger, \lambda^\dagger)$  is a function of exogenous prices  $(p_d, p_c + \tau_c)$  and an exogenous output level  $q$ . Let  $c(p_d, p_c + \tau_c, q)$  represent the associated indirect cost function.



Now, consider a comparative statics analysis with respect to a change in  $\tau_c$

$$0 = f_d \frac{\partial \lambda^\dagger}{\partial \tau_c} + \lambda^\dagger \left( f_{dc} \frac{\partial e_c^\dagger}{\partial \tau_c} + f_{dd} \frac{\partial e_d^\dagger}{\partial \tau_c} \right) \quad (\text{A.26})$$

$$1 = f_c \frac{\partial \lambda^\dagger}{\partial \tau_c} + \lambda^\dagger \left( f_{cc} \frac{\partial e_c^\dagger}{\partial \tau_c} + f_{cd} \frac{\partial e_d^\dagger}{\partial \tau_c} \right) \quad (\text{A.27})$$

$$0 = f_c \frac{\partial e_c^\dagger}{\partial \tau_c} + f_d \frac{\partial e_d^\dagger}{\partial \tau_c}, \quad (\text{A.28})$$

which is equivalent to

$$\begin{pmatrix} \frac{\partial e_c^\dagger}{\partial \tau_c} \\ \frac{\partial e_d^\dagger}{\partial \tau_c} \\ \frac{\partial \lambda^\dagger}{\partial \tau_c} \end{pmatrix} = \begin{pmatrix} \lambda^\dagger f_{cd} & \lambda^\dagger f_{dd} & f_d \\ \lambda^\dagger f_{cc} & \lambda^\dagger f_{cd} & f_c \\ f_c & f_d & 0 \end{pmatrix}^{-1} \begin{pmatrix} 0 \\ 1 \\ 0 \end{pmatrix}. \quad (\text{A.29})$$

The Lagrange multiplier  $\lambda^\dagger (> 0)$  represents the marginal change in costs arising from a marginal change in output from the envelop theorem. In equilibrium, firms make zero profits

$$\lambda^\dagger = \frac{\partial(wl^\dagger + p_d e_d^\dagger + (p_c + \tau_c) e_c^\dagger)}{\partial q} = 1. \quad (\text{A.30})$$

The impact of clean energy subsidies on conditional clean energy demand is determined by

$$\frac{\partial e_d^\dagger}{\partial \tau_c} = \left( \frac{1}{\lambda^\dagger} \right) \left( \frac{-f_c f_d}{f_{cc} f_d^2 - 2 f_{cd} f_c f_d + f_{dd} f_c^2} \right) = \frac{f_c f_d}{-(f_{cc} f_d^2 - 2 f_{cd} f_c f_d + f_{dd} f_c^2)}. \quad (\text{A.31})$$

Note that the denominator is always non-negative. This is because when  $f$  is concave with respect to  $(l, e_d, e_c)$ , it is quasi-concave with respect to  $(l, e_d, e_c)$ . Then, the largest two leading principal minors of its bordered Hessian matrix

$$\begin{pmatrix} 0 & f_d & f_c & f_l \\ f_d & f_{dd} & f_{dc} & f_{dl} \\ f_c & f_{cd} & f_{cc} & f_{cl} \\ f_l & f_{ld} & f_{lc} & f_{ll} \end{pmatrix} \quad (\text{A.32})$$

alternate in sign, with the smallest being non-negative. Thus,

$$\begin{vmatrix} 0 & f_d & f_c \\ f_d & f_{dd} & f_{dc} \\ f_c & f_{cd} & f_{cc} \end{vmatrix} = -(f_{cc}f_d^2 - 2f_{cd}f_c f_d + f_{dd}f_c^2) \geq 0. \quad (\text{A.33})$$

Therefore,  $\frac{de_d^\dagger}{d\tau_c}$  is always non-negative. When the price of clean energy decreases, the use of dirty energy also declines. Similarly, the impact of a change in output level on conditional dirty energy demand is determined by

$$\frac{\partial e_d^\dagger}{\partial q} = \frac{-f_{cc}f_d + f_{cd}f_c}{-(f_{cc}f_d^2 - 2f_{cd}f_c f_d + f_{dd}f_c^2)}. \quad (\text{A.34})$$

When  $f$  is homothetic, the cost function can be written as  $c(p_d, p_c + \tau_c, q) = C(p_d, p_c + \tau_c)h(q)$  with convex  $h$  and concave  $C$ . According to the Shephard's lemma,  $e_d^\dagger = \frac{\partial c}{\partial p_d}$ . Therefore,

$$\frac{\partial e_d^\dagger}{\partial q} = \frac{\partial C}{\partial p_d} \frac{\partial h}{\partial q} > 0, \quad (\text{A.35})$$

and  $-f_{cc}f_d + f_{cd}f_c > 0$ .

#### A.4.2 Profit-maximizing Output and Input Choices

Here, we turn to the profit-maximizing output and input decisions:

$$\max_{q, l, e_d, e_c} q - (wl + p_d e_d + (p_c + \tau_c)e_c) \quad \text{subject to} \quad f(l, e_d, e_c) = q \quad (\text{A.36})$$

$$\Leftrightarrow \max_{q, l, e_d, e_c, \mu} \left\{ q - (wl + p_d e_d + (p_c + \tau_c)e_c) + \mu(f(l, e_d, e_c) - q) \right\}. \quad (\text{A.37})$$

After imposing  $l = 1$ , the first-order conditions are

$$\begin{aligned} p_d &= \mu f_d \\ p_c + \tau_c &= \mu f_c \\ 1 &= \mu \\ 0 &= f - q. \end{aligned}$$

Note that an equilibrium wage is endogenously determined such that  $w = f_l(1, e_d, e_c)$  for market clearing. Therefore,  $(e_d, e_c, q, \mu)$  is a function of exogenous prices  $(p_d, p_c + \tau_c)$ .

Now, consider a comparative statics analysis with respect to a change in  $\tau_c$

$$0 = f_d \frac{\partial \mu}{\partial \tau_c} + \mu \left( f_{dc} \frac{\partial e_c}{\partial \tau_c} + f_{dd} \frac{\partial e_d}{\partial \tau_c} \right) \quad (\text{A.38})$$

$$1 = f_c \frac{\partial \mu}{\partial \tau_c} + \mu \left( f_{cc} \frac{\partial e_c}{\partial \tau_c} + f_{cd} \frac{\partial e_d}{\partial \tau_c} \right) \quad (\text{A.39})$$

$$0 = \frac{\partial \mu}{\partial \tau_c} \quad (\text{A.40})$$

$$0 = f_c \frac{\partial e_c}{\partial \tau_c} + f_d \frac{\partial e_d}{\partial \tau_c} - \frac{\partial q}{\partial \tau_c}, \quad (\text{A.41})$$

which is equivalent to

$$\begin{pmatrix} \frac{\partial e_c}{\partial \tau_c} \\ \frac{\partial e_d}{\partial \tau_c} \\ \frac{\partial \mu}{\partial \tau_c} \\ \frac{\partial q}{\partial \tau_c} \end{pmatrix} = \begin{pmatrix} \mu f_{cd} & \mu f_{dd} & f_d & 0 \\ \mu f_{cc} & \mu f_{cd} & f_c & 0 \\ 0 & 0 & 1 & 0 \\ f_c & f_d & 0 & -1 \end{pmatrix}^{-1} \begin{pmatrix} 0 \\ 1 \\ 0 \\ 0 \end{pmatrix}. \quad (\text{A.42})$$

The impact of clean subsidies on a profit-maximizing output decision is determined by

$$\begin{aligned} \frac{\partial q}{\partial \tau_c} &= \left( \frac{1}{\mu} \right) \left( \frac{-f_{dd}f_c + f_{cd}f_d}{f_{cd}^2 - f_{cc}f_{dd}} \right) \\ &= - \frac{-f_{dd}f_c + f_{cd}f_d}{f_{cc}f_{dd} - (f_{cd})^2}. \end{aligned} \quad (\text{A.43})$$

Combined with the homotheticity of  $f$ , profit maximization implies

$$1 = C(p_d, p_c + \tau_c) h'(q). \quad (\text{A.44})$$

Totally differentiating this equation with respect to  $\tau_c$  yields

$$\frac{\partial C(p_d, p_c + \tau_c)}{\partial \tau_c} h'(q) + C(p_d, p_c + \tau_c) h''(q) \frac{\partial q}{\partial \tau_c} = 0. \quad (\text{A.45})$$

Therefore,

$$\frac{\partial q}{\partial \tau_c} = - \frac{h'(q)}{h''(q)} \frac{\frac{\partial C(p_d, p_c + \tau_c)}{\partial \tau_c}}{C(p_d, p_c + \tau_c)} < 0, \quad (\text{A.46})$$

and  $-f_{dd}f_c + f_{cd}f_d > 0$ .

### A.4.3 Substitution and Production Scale Effects

The substitution effect is given by

$$\frac{\partial e_d^\dagger}{\partial \tau_c} = \frac{f_c f_d}{-(f_{cc} f_d^2 - 2f_{cd} f_c f_d + f_{dd} f_c^2)}, \quad (\text{A.47})$$

which is always positive from the concavity of  $f$ . Therefore, when clean energy prices decline due to clean energy production subsidies, conditional dirty energy demand always decreases. Multiplying the substitution effect by the price of dirty energy  $p_d = f_d$ , we get

$$\begin{aligned} f_d \frac{\partial e_d^\dagger}{\partial \tau_c} &= \frac{f_c (f_d)^2}{-f_{cc} f_d^2 - f_{dd} f_c^2 + 2f_{cd} f_c f_d} \\ &= \left( -\frac{f_{cc}}{f_c} + \left( -\frac{f_{dd}}{f_d} \right) \frac{f_c}{f_d} + 2\frac{f_{cd}}{f_d} \right)^{-1} \end{aligned} \quad (\text{A.48})$$

The production scale effect is given by

$$\frac{\partial e_d^\dagger}{\partial q} \frac{\partial q}{\partial \tau_c} = \left( \frac{-f_{cc} f_d + f_{cd} f_c}{-f_{cc} f_d^2 + 2f_{cd} f_c f_d - f_{dd} f_c^2} \right) \left( -\frac{-f_{dd} f_c + f_{cd} f_d}{f_{cc} f_{dd} - (f_{cd})^2} \right), \quad (\text{A.49})$$

which is always negative from the concavity and homotheticity of  $f$ . Therefore, when clean energy prices decline due to clean energy production subsidies, profit-maximizing output choice always increases, leading to a higher dirty energy use through the production scale effect. Multiplying the scale effect by the price of dirty energy  $p_d = f_d$ , we get

$$\begin{aligned} f_d \frac{\partial e_d^\dagger}{\partial q} \frac{\partial q}{\partial \tau_c} &= \left( \frac{-f_{cc} f_d^2 + f_{cd} f_c f_d}{-f_{cc} f_d^2 + 2f_{cd} f_c f_d - f_{dd} f_c^2} \right) \left( -\frac{-f_{dd} f_c + f_{cd} f_d}{f_{cc} f_{dd} - (f_{cd})^2} \right) \\ &= \left( 1 + \frac{-f_{dd} \frac{f_c}{f_d} + f_{cd}}{-f_{cc} \frac{f_d}{f_c} + f_{cd}} \right)^{-1} \left( -\frac{f_c + f_d \frac{f_{cd}}{-f_{dd}}}{(-f_{cc}) - (-f_{dd}) \left( \frac{f_{cd}}{-f_{dd}} \right)^2} \right). \end{aligned} \quad (\text{A.50})$$

Note that this equation can also be rewritten as

$$f_d \frac{\partial e_d^\dagger}{\partial q} \frac{\partial q}{\partial \tau_c} = \left( \frac{1}{-f_{cc} f_d^2 + f_{cd} f_c f_d} + \frac{1}{-f_{dd} f_c^2 + f_{cd} f_c f_d} \right)^{-1} \left( -\frac{1}{f_{cc} f_{dd} - (f_{cd})^2} \right) \frac{1}{f_c}. \quad (\text{A.51})$$

It is important to emphasize that the homotheticity and concavity of  $f$  ensure the positivity of all denominators, as demonstrated in earlier sections. Consequently, with an increase in gross complementarity, the production scale effect also increases in magnitude.

## A.5 Nested CES-in-CD production function

### A.5.1 Derivatives

To simplify expressions, we define  $\rho \equiv \frac{\epsilon-1}{\epsilon}$ . The partial derivatives of  $f(l, e_d, e_c)$  with respect to energy inputs are given by

$$f_d = \nu \omega e_d^{\rho-1} (\omega e_d^\rho + (1-\omega)e_c^\rho)^{\frac{\nu}{\rho}-1} > 0, \quad (\text{A.52})$$

$$f_c = \nu(1-\omega)e_c^{\rho-1} (\omega e_d^\rho + (1-\omega)e_c^\rho)^{\frac{\nu}{\rho}-1} > 0, \quad (\text{A.53})$$

where we use  $l = 1$ . For the second derivatives, we find

$$f_{cd} = \omega(1-\omega)\nu(\nu-\rho)e_c^{\rho-1}e_d^{\rho-1}(\omega e_d^\rho + (1-\omega)e_c^\rho)^{\frac{\nu}{\rho}-2}, \quad (\text{A.54})$$

which is equivalent to (17) in the main text, and

$$f_{dd} = -\nu \omega e_d^{\rho-2} ((1-\nu)\omega e_d^\rho + (1-\rho)(1-\omega)e_c^\rho) (\omega e_d^\rho + (1-\omega)e_c^\rho)^{\frac{\nu}{\rho}-2} < 0. \quad (\text{A.55})$$

### A.5.2 Substitution and Production Scale Effects

In a nested CES-in-CD production function,

$$g(l, e) = l^{1-\nu} e^\nu \quad \text{where} \quad h(e_d, e_c) = (\omega e_d^{\frac{\epsilon-1}{\epsilon}} + (1-\omega)e_c^{\frac{\epsilon-1}{\epsilon}})^{\frac{\epsilon}{\epsilon-1}}, \quad (\text{A.56})$$

which yields the substitution and production scale effects as follows:

$$\frac{\partial e_d^\dagger}{\partial (p_c + \tau_c)} = \frac{e_c e_d}{g_e e} \epsilon \quad (\text{A.57})$$

$$\frac{\partial e_d^\dagger}{\partial q} \frac{\partial q}{\partial (p_c + \tau_c)} = -\frac{e_c e_d}{g_e e} (1-\nu)^{-1}. \quad (\text{A.58})$$

Since  $h$  exhibits constant returns to scale, energy producers make zero profits in equilibrium:  $g_e e = (p_c + \tau_c)e_c + p_d e_d$ . Multiplying each by  $\frac{(p_c + \tau_c)}{e_d}$  and summing them up gives

$$\frac{d \ln e_d}{d \ln (p_c + \tau_c)} = (\epsilon - (1-\nu)^{-1}) \frac{(p_c + \tau_c)e_c}{(p_c + \tau_c)e_c + p_d e_d}. \quad (\text{A.59})$$

## B Analysis of Quantitative Model

### B.1 Characterization of Competitive Equilibrium

Let  $j = y, c, d$  index a ‘sector’ and  $p_{j,t}$  be the price of output from sector  $j$ . The first-order conditions are:

$$\rho_t = \alpha p_{j,t} K_{j,t}^{\alpha-1} E_{j,t}^\nu (A_{j,t} L_{j,t})^{1-\alpha-\nu} \quad (\text{B.1})$$

$$w_t = (1 - \alpha - \nu) p_{j,t} K_{j,t}^\alpha E_{j,t}^\nu A_{j,t}^{1-\alpha-\nu} L_{j,t}^{-\alpha-\nu} \quad (\text{B.2})$$

$$p_{E,t} = \nu p_{j,t} K_{j,t}^\alpha E_{j,t}^{\nu-1} (A_{j,t} L_{j,t})^{1-\alpha-\nu}, \quad (\text{B.3})$$

where  $\rho_t$  is the rental rate,  $w_t$  is the wage and  $p_{E,t}$  is the price of energy services. For a given  $j$ , divide through to get

$$\frac{\rho_t}{w_t} = \frac{\alpha}{1 - \alpha - \nu} (K_{j,t}/L_{j,t})^{-1}. \quad (\text{B.4})$$

The only term that varies across sectors is the capital-labor ratio. So, the capital-labor ratio is the same in all sectors and equals the aggregate ratio, i.e.,  $(K_{j,t}/L_{j,t}) = (K_t/L_t) \forall j, t$ . Similarly,

$$\frac{p_{E,t}}{w_t} = \frac{\nu}{1 - \alpha - \nu} (E_{j,t}/L_{j,t})^{-1}. \quad (\text{B.5})$$

So,  $(E_{j,t}/L_{j,t}) = (E_t/L_t) \forall j, t$ . Together, these results imply that all production factors are used in constant ratios in each sector. We will use  $n_{j,t}$  to denote these ratios, which implies the following market clearing condition:

$$1 = n_{y,t} + n_{c,t} + n_{d,t}. \quad (\text{B.6})$$

Here, (B.6) is market clearing condition for labor, and  $n_{j,t}$  as the share of labor used in each sector  $j$ , which will also be the share of capital and share of energy used in sector  $j$ .

The price index for sector  $j$  is

$$p_{j,t} = \tilde{\alpha} A_{j,t}^{\alpha+\nu-1} w_t^{1-\alpha-\nu} \rho_t^\alpha p_{E,t}^\nu, \quad (\text{B.7})$$

where  $\tilde{\alpha} \equiv \alpha^{-\alpha} \nu^{-\nu} (1 - \alpha - \nu)^{\nu+\alpha-1}$  is a collection of constants. We normalize the price of

the final good to one in every period:

$$1 = \tilde{\alpha} A_{y,t}^{\alpha+\nu-1} w_t^{1-\alpha-\nu} \rho_t^\alpha p_{E,t}^\nu. \quad (\text{B.8})$$

Combined with (B.7), the normalization implies that

$$p_{c,t} = \left( \frac{A_{y,t}}{A_{c,t}} \right)^{1-\alpha-\nu} \quad (\text{B.9})$$

$$p_{d,t} = \left( \frac{A_{y,t}}{A_{d,t}} \right)^{1-\alpha-\nu}. \quad (\text{B.10})$$

Since all firms have constant-returns-to-scale (CRS) production, differences in prices only reflect differences in unit costs. Since the producer in each sector  $j$  has a symmetric production function, differences in unit costs are driven entirely by productivity levels. Importantly, (B.8), (B.9), and (B.10) imply that the sector-level prices can be found independently of the rest of the model.

The first order conditions for the energy aggregator are:

$$(1 + \tau_d) p_{d,t} = p_{E,t} \omega^{\frac{1}{\epsilon}} \left( \frac{Z_{d,t}}{E_t} \right)^{\frac{-1}{\epsilon}} \quad (\text{B.11})$$

$$(1 + \tau_c) p_{c,t} = p_{E,t} (1 - \omega)^{\frac{1}{\epsilon}} \left( \frac{Z_{c,t}}{E_t} \right)^{\frac{-1}{\epsilon}}. \quad (\text{B.12})$$

In addition, the price index for energy services is:

$$p_{E,t} = \left( \omega ((1 + \tau_d) p_{d,t})^{1-\epsilon} + (1 - \omega) ((1 + \tau_c) p_{c,t})^{1-\epsilon} \right)^{\frac{1}{1-\epsilon}}. \quad (\text{B.13})$$

Combining (B.13) with (B.9) and (B.10) yields

$$p_{E,t} = \left( \omega \left( (1 + \tau_d) \left( \frac{A_{y,t}}{A_{d,t}} \right)^{1-\alpha-\nu} \right)^{1-\epsilon} + (1 - \omega) \left( (1 + \tau_c) \left( \frac{A_{y,t}}{A_{c,t}} \right)^{1-\alpha-\nu} \right)^{1-\epsilon} \right)^{\frac{1}{1-\epsilon}}. \quad (\text{B.14})$$

All of the variables on the right-hand side (RHS) of this equation evolve exogenously, and  $p_{E,t}$  can be found independently of the rest of the model.

Household optimization yields the Euler equation

$$C_{t+1} = \beta(1 + n)(1 + r_{t+1})C_t \quad (\text{B.15})$$

where  $r_{t+1} = \rho_{t+1} - \delta$  is the real interest rate. The transversality condition is

$$\lim_{T \rightarrow \infty} \beta^T K_{T+1} C_T^{-1} = 0. \quad (\text{B.16})$$

## B.2 Intensive form

Let  $d_t = \frac{D_t}{A_{y,t} L_t}$  for any variable  $D_t$ . It is straightforward to re-write production functions (20) and (22) as:

$$y_t = k_t^\alpha e_t^\nu n_{y,t} \quad (\text{B.17})$$

$$z_{d,t} = k_t^\alpha e_t^\nu n_{d,t} p_{d,t}^{-1} \quad (\text{B.18})$$

$$z_{c,t} = k_t^\alpha e_t^\nu n_{c,t} p_{c,t}^{-1}. \quad (\text{B.19})$$

In addition, using first order conditions (B.1) and (B.3) along with price normalization (B.8) gives factor demands:

$$\rho_t = \alpha k_t^{\alpha-1} e_t^\nu \quad (\text{B.20})$$

$$p_{E,t} = \nu k_t^\alpha e_t^{\nu-1}. \quad (\text{B.21})$$

The demand equations for primary energy, (B.11) and (B.12), can be re-written as:

$$(1 + \tau_d) p_{d,t} = p_{E,t} \omega^{\frac{1}{\epsilon}} \left( \frac{z_{d,t}}{e_t} \right)^{\frac{-1}{\epsilon}} \quad (\text{B.22})$$

$$(1 + \tau_c) p_{c,t} = p_{E,t} (1 - \omega)^{\frac{1}{\epsilon}} \left( \frac{z_{c,t}}{e_t} \right)^{\frac{-1}{\epsilon}}. \quad (\text{B.23})$$

To complete the static equations, we have the labor-market clearing condition from above:

$$1 = n_{c,t} + n_{d,t} + n_{y,t}. \quad (\text{B.24})$$

Then, to close the model, we have the two standard dynamic equations. The law of motion for capital (29) is

$$k_{t+1} = \frac{y_t - c_t + (1 - \delta)k_t}{(1 + g_y)(1 + n)} \quad (\text{B.25})$$



and the Euler equation is

$$c_{t+1} = \frac{\beta(1+r_{t+1})}{(1+g_y)} c_t. \quad (\text{B.26})$$

Recall that the price variables,  $\{p_{E,t}, p_{c,t}, p_{d,t}\}_{t=0}^{\infty}$ , can be determined prior to solving the model. The period-to-period dynamics of  $\{y_t, k_t, r_t, c_t, e_t, z_{d,t}, z_{c,t}, n_{y,t}, n_{d,t}, n_{c,t}\}$  are pinned down by the ten equations (B.17) – (B.26). Note that only the consumption Euler equation (B.15) and the capital stock's equation of motion have intertemporal components. For boundary conditions, we have  $k_0$  given and a transversality condition for  $c_t$ . In practice, the latter is satisfied by the fact that the economy converges to a BGP.

### B.3 Intermediate Results

In this section, we derive some helpful intermediate results that are useful for characterizing the balanced growth path (BGP) and to simplifying the computational solution.

To start, we take the ratio of the intensive-form inverse demand functions for primary energy, (B.22) and (B.23), to get:

$$\frac{(1+\tau_d)p_{d,t}}{(1+\tau_c)p_{c,t}} = \tilde{\omega} \left( \frac{z_{c,t}}{z_{d,t}} \right)^{\frac{1}{\epsilon}}, \quad (\text{B.27})$$

where  $\tilde{\omega} \equiv \left( \frac{\omega}{1-\omega} \right)^{\frac{1}{\epsilon}}$  is a collection of constants. Then, we plug in the intensive form primary energy production functions, (B.18) and (B.19), to get:

$$\frac{(1+\tau_d)p_{d,t}}{(1+\tau_c)p_{c,t}} = \tilde{\omega} \left( \frac{n_{c,t}p_{c,t}^{-1}}{n_{d,t}p_{d,t}^{-1}} \right)^{\frac{1}{\epsilon}} \quad (\text{B.28})$$

and solve for

$$\frac{n_{c,t}}{n_{d,t}} = \tilde{\omega}^{-\epsilon} \left( \frac{p_{d,t}}{p_{c,t}} \right)^{\epsilon-1} \left( \frac{1+\tau_d}{1+\tau_c} \right)^{\epsilon} \equiv \tilde{n}_{cd,t}, \quad (\text{B.29})$$

which, by equations (B.9) and (B.10), can be found independently of the rest of the model.

Now, we combine this with the labor market clearing condition to write:

$$1 - n_{y,t} = \tilde{n}_{cd,t} n_{d,t} + n_{d,t} \Rightarrow \quad (\text{B.30})$$

$$n_{d,t} = \frac{1 - n_{y,t}}{1 + \tilde{n}_{cd,t}}, \quad (\text{B.31})$$

$$n_{c,t} = \tilde{n}_{cd,t} \left( \frac{1 - n_{y,t}}{1 + \tilde{n}_{cd,t}} \right). \quad (\text{B.32})$$

Thus, we have written all of the labor market allocation in terms of one variable,  $n_{y,t}$ .

We now move to expressing  $n_{y,t}$  as a function of prices only. Using the intensive form production functions for primary energy, (B.18) and (B.19), we can re-write the production function for energy services, (21), as

$$E_t = A_{y,t} L_t k_t^\alpha e_t^\nu \left( \omega^{\frac{1}{\epsilon}} (n_{d,t} p_{d,t}^{-1})^{\frac{\epsilon-1}{\epsilon}} + (1 - \omega)^{\frac{1}{\epsilon}} (n_{c,t} p_{c,t}^{-1})^{\frac{\epsilon-1}{\epsilon}} \right)^{\frac{\epsilon}{\epsilon-1}} \Rightarrow \quad (\text{B.33})$$

$$e_t = \frac{y_t}{n_{y,t}} \left( \omega^{\frac{1}{\epsilon}} (n_{d,t} p_{d,t}^{-1})^{\frac{\epsilon-1}{\epsilon}} + (1 - \omega)^{\frac{1}{\epsilon}} (n_{c,t} p_{c,t}^{-1})^{\frac{\epsilon-1}{\epsilon}} \right)^{\frac{\epsilon}{\epsilon-1}} \quad (\text{B.34})$$

Factoring out  $n_{d,t}$  and utilizing (B.29) gives

$$e_t = \frac{y_t}{n_{y,t}} \left( \frac{1 - n_{y,t}}{1 + \tilde{n}_{cd,t}} \right) \tilde{p}_{E,t}^{-1}, \quad (\text{B.35})$$

where

$$\tilde{p}_{E,t}^{-1} \equiv \left( \omega^{\frac{1}{\epsilon}} (p_{d,t}^{-1})^{\frac{\epsilon-1}{\epsilon}} + (1 - \omega)^{\frac{1}{\epsilon}} (\tilde{n}_{cd,t} p_{c,t}^{-1})^{\frac{\epsilon-1}{\epsilon}} \right)^{\frac{\epsilon}{\epsilon-1}}. \quad (\text{B.36})$$

Rearranging the intensive form of the first-order condition for energy, (B.21), gives

$$e_t = \left( \frac{\nu}{p_{E,t}} \right) \left( \frac{y_t}{n_{y,t}} \right). \quad (\text{B.37})$$

Combining (B.35) and (B.37) gives

$$\frac{y_t}{n_{y,t}} \left( \frac{1 - n_{y,t}}{1 + \tilde{n}_{cd,t}} \right) \tilde{p}_{E,t}^{-1} = \left( \frac{\nu}{p_{E,t}} \right) \left( \frac{y_t}{n_{y,t}} \right). \quad (\text{B.38})$$

which we can solve for

$$n_{y,t} = 1 - \nu \left( \frac{\tilde{p}_{E,t}}{p_{E,t}} \right) (1 + \tilde{n}_{cd,t}). \quad (\text{B.39})$$

We can then plug back into (B.31) and (B.32) to get clean and dirty labor allocations as a function of prices. We have now written all of the labor allocations as functions only of prices, which we can take as given in the computational solution.

## B.4 Balanced Growth Path (BGP)

On the BGP, all intensive form variables are constant. We use  $\bar{d}$  to denote the BGP value of some variable  $d_t$ . In addition, we assume that, after some future date, all technologies grow at the same constant rate and policies reach a constant level. Together, these assumptions imply that energy prices are constant.

From the Euler equation (B.26),

$$\bar{r} = \frac{(1+g)}{\beta} - 1. \quad (\text{B.40})$$

We use factor demands (B.20) and (B.21), to get

$$\bar{k} = \alpha^{\frac{1-\nu}{1-\alpha-\nu}} (\bar{\rho})^{\frac{\nu-1}{1-\alpha-\nu}} \left( \frac{\nu}{\bar{p}_E} \right)^{\frac{\nu}{1-\alpha-\nu}} \quad (\text{B.41})$$

$$\bar{e} = \left( \frac{\nu}{\bar{p}_E} \right)^{\frac{1}{1-\nu}} \bar{k}^{\frac{\alpha}{1-\nu}}. \quad (\text{B.42})$$

From (B.39), (??), and (??), we know the labor allocations as a function of prices:

$$\bar{n}_y = \left[ 1 + \nu \left( \frac{\bar{p}_E}{\bar{p}_E} \right) (1 + \bar{n}_{cd}) \right]^{-1} \quad (\text{B.43})$$

$$\bar{n}_d = \frac{1 - \bar{n}_y}{1 + \bar{n}_{cd}}, \quad (\text{B.44})$$

$$\bar{n}_c = \bar{n}_{cd} \left( \frac{1 - \bar{n}_y}{1 + \bar{n}_{cd}} \right). \quad (\text{B.45})$$

Production functions (B.17), (B.18), and (B.19) yield

$$\bar{y} = \bar{k}^\alpha \bar{e}^\nu \bar{n}_y \quad (\text{B.46})$$

$$\bar{z}_d = \bar{k}^\alpha \bar{e}^\nu \bar{n}_d \bar{p}_d^{-1} \quad (\text{B.47})$$

$$\bar{z}_c = \bar{k}^\alpha \bar{e}^\nu \bar{n}_c \bar{p}_c^{-1}. \quad (\text{B.48})$$

Finally, we rearrange the law of motion for capital, (B.25) to arrive at

$$\bar{c} = \bar{y} + (1 - \delta)\bar{k} - (1 + g)(1 + n)\bar{k}. \quad (\text{B.49})$$

The ten equations (B.40) – (B.49) give the BGP values for the ten intensive form variables that define the evolution of the economy. The transversality condition (B.16) can be rewritten as

$$\lim_{T \rightarrow \infty} \beta^T (1 + g)(1 + n)\bar{k}\bar{c}^{-1} = 0, \quad (\text{B.50})$$

which is clearly satisfied, since  $\beta < 1$  and all of the other terms are constant.

## B.5 Solution Method

A key result from this appendix is that all prices and labor allocations can be solved separately from the rest of the model. Indeed, we have closed form solutions for these relations. After solving for prices and labor allocations, we can separate out the following intensive form equations:

$$\begin{aligned} k_{t+1} &= \frac{y_t - c_t + (1 - \delta)k_t}{(1 + g)(1 + n)} \\ c_{t+1} &= \frac{\beta(1 + r_{t+1})}{(1 + g)}c_t. \\ y_t &= k_t^\alpha e_t^\nu n_{y,t} \\ \rho_t &= \alpha k_t^{\alpha-1} e_t^\nu \\ p_{E,t} &= \nu k_t^\alpha e_t^{\nu-1}, \end{aligned}$$

which give the dynamics for  $\{k_t, c_t, y_t, r_t, e_t\}$  independently of the other variables (recall,  $r_t = \rho_t - \delta$ ). These equations represent a fairly standard growth model with two exogenously evolving parameters,  $n_{y,t}$  and  $p_{E,t}$ . We solve this set of equations using the perfect foresight solver in *Dynare* (Adjemian et al., 2011). To find the primary energy allocations, we then plug back into (B.18) and (B.19).

To check the accuracy of the model, we can test the intensive form equations that were excluded from this solution method, because they were used to derive the closed form labor

allocations. These are:

$$\begin{aligned}(1 + \tau_d)p_{d,t} &= p_{E,t}\omega^{\frac{1}{\epsilon}}\left(\frac{z_{d,t}}{e_t}\right)^{\frac{-1}{\epsilon}} \\ (1 + \tau_c)p_{c,t} &= p_{E,t}(1 - \omega)^{\frac{1}{\epsilon}}\left(\frac{z_{c,t}}{e_t}\right)^{\frac{-1}{\epsilon}} \\ 1 &= n_{c,t} + n_{d,t} + n_{y,t}.\end{aligned}$$

For the sake of convenience, we also use Dynare to (i) perform these checks, (ii) to solve for the intermediate variables,  $p_{E,t}$ ,  $\tilde{p}_{E,t}$  and  $\tilde{n}_{cd,t}$ , and (iii) solve for the labor allocations,  $\{n_{y,t}, n_{d,t}, n_{c,t}\}$ .

## B.6 Calibration

### B.6.1 Damages

Dirty energy use in period  $t = 0$  ( $Z_{d,0}$ ) causes lifetime utility damages of

$$\sum_{t=0}^{\infty} \beta^t m \eta_0 Z_{d,0} = m \eta_0 \frac{Z_{d,0}}{1 - \beta}. \quad (\text{B.51})$$

To convert this value to dollar, we divide by the marginal utility of consumption,  $1/C_0$ . Then, we multiply by  $1/Y_0$  to express this cost as a fraction of GDP, which we match to a given value  $\Xi$ . Thus, we solve:

$$\Xi = m \frac{\eta_0 Z_{d,0}}{(1 - \beta)} \frac{C_0}{Y_0} \quad (\text{B.52})$$

to calibrate  $m$ .

To calculate  $\Xi$ , we take the social cost of carbon from [Rennert et al. \(2022\)](#) (185\$/tCO<sub>2</sub>, measured in 2020 US dollars) and multiply it by tonnes of CO<sub>2</sub> emitted in the US in 2020. Then, we divide it by US GDP in 2020. We find that the external cost of dirty energy use is 4 percent of US GDP in 2020.

### B.6.2 Lifetime Welfare Calculation

To calculate welfare, we start with the definition

$$U = \sum_{t=0}^{\infty} \beta^t (L_t \ln(C_t) - m \sum_{v=0}^t \eta_v Z_{d,v}). \quad (\text{B.53})$$

Then, we note that the total marginal cost of carbon is  $\frac{m}{1-\beta}$ , which lets us re-write the utility function as

$$U = \sum_{t=0}^{\infty} \beta^t \left( L_t \ln(C_t) - \left( \frac{m}{1-\beta} \right) \eta_t Z_{d,t} \right). \quad (\text{B.54})$$

We simulate the model for  $T + 1$  periods. It is then straightforward to calculate the flow utility in the first  $T$  periods.

To calculate the continuation values, we assume that consumption and dirty energy grow at constant rates  $g_c$  and  $g_d$  in  $T + 1$  and beyond (in practice the economy is on the BGP well before we stop simulating). The continuation value is

$$\begin{aligned} & \beta^T \sum_{v=0}^{\infty} \left( L_T (\beta(1+n))^v \ln(C_T(1+g_c)^v) - \left( \frac{m}{1-\beta} \right) \eta_T Z_{d,T} \beta^v (1+g_\eta)^v (1+g_d)^v \right) \\ &= \beta^T \left( \frac{L_T \ln(C_T)}{1-\beta(1+n)} + L_T \ln(1+g_c) \sum_{v=0}^{\infty} (\beta(1+n))^v v - \frac{m \eta_T Z_{d,T}}{(1-\beta)(1-\beta(1+g_\eta)(1+g_d))} \right) \\ &= \beta^T \left( \frac{L_T \ln(C_T)}{1-\beta(1+n)} + \frac{L_T \ln(1+g_c) \beta(1+n)}{(1-\beta(1+n))^2} - \frac{m \eta_T Z_{d,T+1}}{(1-\beta)(1-\beta(1+g_\eta)(1+g_d))} \right). \quad (\text{B.55}) \end{aligned}$$

### B.6.3 CEV Calculation

Let variables with a tilde ( $\tilde{\cdot}$ ) denote the outcomes with policy and variables without the tilde denote outcomes along the laissez-faire BGP. Using the procedure outlined in the previous subsection, we calculate lifetime utility  $\tilde{U}$  and  $U$ . Then, for the CEV, we find  $\psi$  such that

$$\tilde{U} = \sum_{t=0}^{\infty} \beta^t (L_t \ln(\psi C_t) - m \sum_{v=0}^t \eta_v Z_{k,v}). \quad (\text{B.56})$$

To start, we pull out  $\psi$  to get

$$\tilde{U} = \sum_{t=0}^{\infty} \beta^t L_t \ln(\psi) + \sum_{t=0}^{\infty} L_t \beta^t (L_t \ln(C_t) - m \sum_{v=0}^t \eta_v Z_{d,v}) \quad (\text{B.57})$$

$$= L_0 \sum_{t=0}^{\infty} (\beta(1+n))^t \ln(\psi) + U. \quad (\text{B.58})$$

So, to calculate the CEV, we take

$$\psi = \exp \left[ (1 - \beta(1+n)) \left( \frac{\tilde{U} - U}{L_0} \right) \right]. \quad (\text{B.59})$$

## B.7 Additional Simulation Results

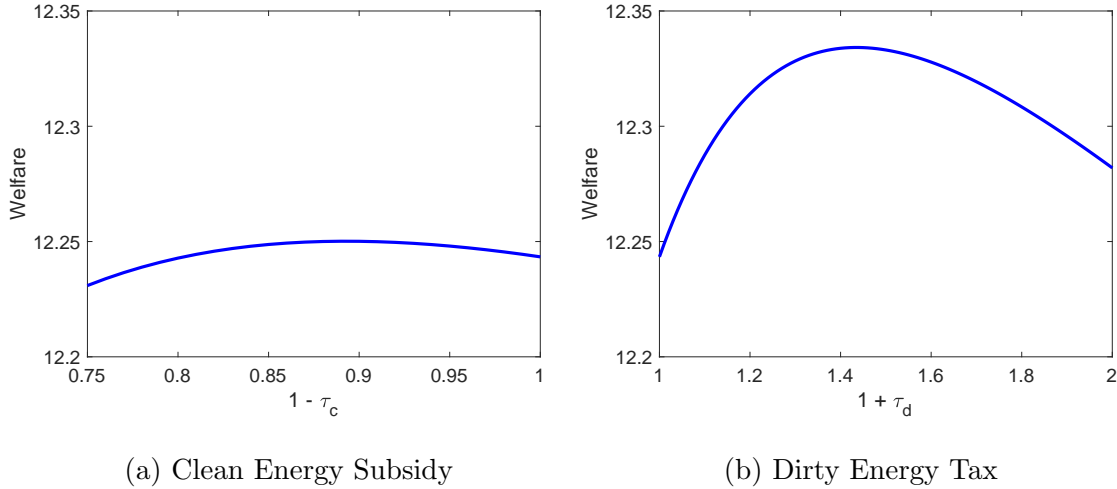


Figure B.1: Constrained Planner's Objective Function