

# THE CONSUMPTION-BASED DETERMINANTS OF THE TERM STRUCTURE OF DISCOUNT RATES

CHRISTIAN GOLLIER

CESIFO WORKING PAPER NO. 1375  
CATEGORY 8: RESOURCES AND ENVIRONMENT  
JANUARY 2005

*An electronic version of the paper may be downloaded*

- *from the SSRN website:* [www.SSRN.com](http://www.SSRN.com)
- *from the CESifo website:* [www.CESifo.de](http://www.CESifo.de)

# THE CONSUMPTION-BASED DETERMINANTS OF THE TERM STRUCTURE OF DISCOUNT RATES

## Abstract

The efficient rate of return of a zero-coupon bond with maturity  $t$  is determined by our expectations about the mean (+), variance (-) and skewness (+) of the growth of aggregate consumption between 0 and  $t$ . The shape of the yield curve is thus determined by how these moments vary with  $t$ . We first examine growth processes in which a higher past economic growth yields a first-degree dominant shift in the distribution of the future economic growth, as assumed for example by Vasicek (1977). We show that when the growth process exhibits such a positive serial correlation, then the yield curve is decreasing if the representative agent is prudent ( $u''' > 0$ ), because of the increased risk that it yields for the distant future. A similar definition is proposed for the concept of second-degree stochastic correlation, as observed for example in the Cox-Ingersoll-Ross model, with the opposite comparative static property holding under temperance ( $u'''' < 0$ ), because the change in downside risk (or skewness) that it generates. Finally, using these theoretical results, we propose two arguments in favor of using a smaller rate to discount cash-flows with very large maturities, such as those associated to global warming or nuclear waste management.

JEL Code: G12, E43, Q51.

Keywords: stochastic dominance, yield curve, far distant future, cost-benefit analysis, prudence, temperance, downside risk.

*Christian Gollier  
University of Toulouse I  
Institute of Industrial Economics  
Place Anatole France  
31042 Toulouse cedex  
France  
gollier@cict.fr*

An earlier version of this paper was entitled "Transitory shocks to GNP and the consumption-based term structure of interest rates".

# 1 Introduction

How much effort are we ready to make today to improve the future? Households are faced with this question when they plan their savings for retirement, whereas entrepreneurs have to determine whether to undertake new investment projects. At the collective level, one needs to determine, for example, whether to limit the national budget deficit, or whether to invest in the education system. In a recent past, similar questions emerged, but with the striking innovation of being related to the far-distant future. Exploring the universe, protecting the biodiversity, limiting the extraction of exhaustible resources, dealing with nuclear wastes and global warming are a few examples of policy questions that confront us to our attitude towards improving the welfare of human beings that will live in hundreds or thousands years in the future. These valuation questions are all solved by the selection of the discount rate.

As is well-known, the use of a single rate to discount sure cash-flows at all maturities implies that costs and benefits occurring, say, in more than 100 years are typically irrelevant for the decision, because of the exponential nature of discounting. This is why for example the so-called "Copenhagen Consensus"<sup>1</sup> ranked all projects linked to the prevention of global warming at the lowest priority level based on standard cost-benefit analyses with a constant discount rate. The problem is that there is a priori no scientific reason to believe that one should discount all maturities at the same rate. The tradition of using a constant rate in cost-benefit analysis should not be seen as a dogma, but rather as a useful practical simplification. Various authors – among whom Weitzman (1998, 2001, 2004) is the most vocal – claimed that one should opt for discount rates that are decreasing with the maturity of the cash flows under scrutiny. Weitzman (2004) in particular develops an argument for selecting a zero discount rate for maturities around 50 years, the discount rate becoming even negative for longer time horizons. Of course, adopting such recommendations would massively reallocate our collective investments towards those benefiting to distant generations, potentially at the detriment of actions with more immediate benefits such as fighting malaria and promoting education in developing countries. It is therefore important

---

<sup>1</sup>It is the outcome of a conference held in Copenhagen in May 2004 aimed at ranking a set of various collective investment projects, including fighting AIDS and malaria in developing countries, water management, biodiversity, education,....

to have a good understanding of the reasons why we should adopt such decreasing discount rates.

Since the seminal contribution of Vasicek (1977), economists have intensively explored how efficient discount rates should vary with the maturity of the corresponding cash payment. The immense literature on the term structure of interest rates has produced an important corpus of knowledge about this question. This is quite unfortunate that researchers discussing this question in the various forums of environmental economics do not take advantage of the existence of this vast literature.<sup>2</sup> There are several reasons for that. First, most papers on the yield curve are aimed at explaining the observed shape of that curve, whereas environmental economists have a much more normative approach. Notice however that the absence of frictions in the standard models on the term structure implies that the equilibrium interest rates are also the socially efficient discount rates to be used in cost-benefit analysis. Second, researchers in finance are usually interested in pricing traded assets, which implies that their time-horizon is limited by the largest maturity of existing liquid markets for risk-free assets, which does not exceed 30 years. Last but not least, this literature is highly complex, and it does usually not provide intuition to the underlying phenomena. This is well summarized by Piazzesi (2004): "The quest for understanding what moves bond yields has produced an enormous literature with its own journals and graduate courses. Those who want to join the quest are faced with considerable obstacles. The literature has evolved mostly in continuous time, where stochastic calculus reigns and partial differential equations spit fire. The knights in this literature are fighting for different goals, which makes it often difficult to comprehend why the quest is moving in certain directions." This quest leads to the (preliminary) conclusion that the shape of the yield curve is governed by the dynamics of the short term interest rate (and maybe a few other stochastic factors) that may entails mean reversion together with temporary and permanent shocks. Because the term structure is obtained by arbitrage using an exogenously given dynamic process for the price kernel, this reasoning is usually not based on individual preferences. It is therefore not an easy starting block to explain to public decision-makers how much effort our

---

<sup>2</sup>See for example the collective book edited by Portney and Weyant (1999) on discounting. See also Arrow et al. (1996), Weitzman (1998, 2001), Newell and Pizer (2003) and Groom, Koundouri, Panopoulou and Pantelidis (2004).

generation should undertake to improve the welfare of future generations.

The aim of this paper is twofold. First, we exhibit the fundamental determinants of the shape of the yield curve based on the preferences of the representative agent and on the stochastic process of aggregate consumption in the economy. Second, we examine realistic dynamic growth processes that are relevant to determine the very long discount rates.

The efficient interest rate associated to time horizon  $t$  is decreasing in our willingness to save in order to finance consumption at that date, which itself depends upon our expectations about the growth of our incomes over  $[0, t]$ . Therefore, the term structure of interest rates provides a rich set of information about these expectations. For example, when consumers expect an increase in their future incomes, they want to cash this benefit immediately by reducing their saving. This raises the equilibrium interest rate. This wealth effect relies on the standard assumption that consumers want to smooth their consumption over time. It explains why the yield curve is upward sloping when the representative agent expects an accelerating growth rate in the future (Estrella and Hardouvelis (1991)).

Among the many difficulties to extract testable hypothesis about the relationship between the term structure and expectations about the future economic activity, the most important one is due to uncertainty. Since Leland (1968), we know that uncertainty about future incomes raises the prudent consumers' willingness to save. This precautionary effect tends to reduce the interest rate. This implies for example that the anticipation of a deterministic reduction in the volatility of growth yields an increasing yield curve (Barsky (1989)). It is interesting to examine how does the accumulation of risk for longer time horizons influence the determination of the corresponding interest rate. Because longer horizons mean larger expected consumption, people want to save less for these better times. On the contrary, longer horizons also mean more risk, which implies that consumers want to save more for these more uncertain times. Which of these wealth and precautionary effects will dominate the other? If the wealth effect dominates the precautionary effect, then the yield curve must be increasing.

The simplest case is when the growth of the economy follows a stationary random process. In this case, both the expected log consumption and its variance increases proportionally with the time horizon. It implies that the wealth effect and the precautionary effect exactly compensate each other when the representative agent has a constant relative risk aversion (CRRA).

As is well-known, CRRA combined with stationarity implies that the yield curve is completely flat. In sections 3 and 4 of this paper, we show how the existence of serial correlations in the growth rate of the economy affects the shape of the yield curve. We define two types of serial correlations. Positive first-degree stochastic correlation (FSC) occurs when an increase in the first subperiod growth rate induces a first-degree stochastic improvement in the conditional distribution of the growth rate in the second subperiod. Such a positive serial correlation in the growth of the economy tends to magnify the long-term risk on consumption relative to the short-term risk. It implies that the prudent representative agent will want to rebalance her efforts towards the longer time horizons, thereby tending to reduce long interest rates. This is formally shown in section 3 in a much simpler and more intuitive way than traditionally done in the existing literature. It is also more general in the sense that our result only requires that the representative agent be prudent. FSC correlations are the main feature of the two classical models of the term structure, namely Vasicek (1977) and Cox, Ingersoll and Ross (1985a,b).

There is positive second-degree stochastic correlation (SSC) in growth rates if an increase in the first subperiod rate yields an increase in risk in the conditional distribution of growth in the second subperiod. This tends to raise the skewness of the distribution of future consumption. Ex ante, it reduces the expected marginal utility of wealth at that maturity if the fourth derivative of the utility function is negative, a condition that is satisfied for CRRA preferences. This tends to reduce the willingness to purchase more zero-coupon bonds associated to long maturities, thereby raising their rate of return. This is proved in section 4. Notice that the main feature of the Cox-Ingersoll-Ross model is to add some SSC correlations in the Vasicek model. The link of our results to these two classical models are made more explicit in section 5.

In section 6, we examine two specific stochastic processes with positive FSC correlations that are realistic representations of the uncertainty faced by Humanity in the very long run. The first stochastic process for aggregate consumption has a drift that can take two possible values. A switch from one drift to the other can occur at each period with a very small probability. This is aimed at modeling the kind of event that we experienced with the industrial revolution at the end of the 18th century, where the drift changed quite abruptly from the secular 0% per year to 2% per year since then. Our model formalizes the risk of a switch in the opposite direction – "The

Limit to Growth” – due for example to the scarcity of natural resources or to the extinction of scientific progresses. We show that the positive FSC correlation that this stochastic process yields a strong negative effect on the rate at which we should discount far-distant cash-flows. In the second model of long-term uncertainty inspired from Weitzman (2004), we assume that the drift is unique but unknown. As time goes by, one will use Bayes rule to update the beliefs about the true value of the drift. This stochastic process also yields positive FSC correlations – and thus decreasing discount rates – for the simple reason that a good news in the short term is a good news for the secular distribution of growth.

## 2 The term structure without predictability

The preferences of the representative agent in the economy are represented by her utility function  $u$  and by her rate of pure preference for the present  $\delta$ . The utility function  $u$  on consumption is assumed to be three times differentiable, increasing and concave. Let  $\tilde{c}_t$  denote consumption at date  $t$ . The equilibrium per period rate of return at date 0 for a zero-coupon bond maturing at date  $t$  is denoted  $r_t$ . To be in equilibrium, investing marginally in such an asset should leave the expected discounted utility of the representative agent unchanged. This condition is written as

$$e^{-\delta t} E u'(\tilde{c}_t) e^{r_t t} = u'(c_0), \quad (1)$$

which is the standard Euler equation for the consumption-saving problem. The classical consumption-based pricing formula is obtained by rewriting condition (1) as

$$r_t = \delta - \frac{1}{t} \ln \frac{E u'(\tilde{c}_t)}{u'(c_0)}. \quad (2)$$

Two factors determine by how much the risk-free rate exceeds the rate of pure preference for the present  $\delta$ . The first factor is a wealth effect. If we expect to consume more in the future, i.e., if  $E\tilde{c}_t > c_0$ , the marginal utility of one more euro in the future is smaller than the marginal utility of one more euro immediately:  $u'(E\tilde{c}_t) < u'(c_0)$ . It implies that  $-t^{-1} \ln(u'(E\tilde{c}_t)/u'(c_0))$  is positive. This positive wealth effect is increasing in the expected growth rate of consumption over the entire period  $[0, t]$  and in the rate at which

marginal utility is decreasing with consumption, which is measured by the index of relative risk aversion  $R(c) = -cu''(c)/u'(c)$ . The intuition is that higher expectations about future incomes reduces the willingness to save, thereby raising the equilibrium interest rate.

But, except when marginal utility is linear,  $Eu'(\tilde{c}_t)$  is not equal to  $u'(E\tilde{c}_t)$ , which introduces a second factor to the determination of interest rates. When the representative agent is prudent, i.e., when marginal utility is convex, the uncertainty surrounding future consumption raises the expected marginal utility:  $Eu'(\tilde{c}_t) > u'(E\tilde{c}_t)$ . This raises the willingness to save, thereby yielding a reduction of the equilibrium interest rate. This precautionary effect goes opposite to the wealth effect. It is increasing in the riskiness of future consumption and in the index of convexity of marginal utility, which is defined as relative prudence  $P(c) = -cu'''(c)/u''(c)$ . We can make these different factors more explicit by using second-order Taylor approximations of  $u'(z_t)$  in the above equality. This technique yields

$$r_t \simeq \delta + R(c_0) \frac{E\tilde{c}_t - c_0}{tc_0} - \frac{1}{2} R(c_0) P(c_0) \frac{Var(\tilde{c}_t/c_0)}{t}, \quad (3)$$

where the three terms in the right-hand side measure respectively the impatience effect, the wealth effect and the precautionary effect. This approximation is exact for the instantaneous rate  $r_{dt}$ .

The term structure of interest rate is determined by how these two conflicting factors are compounded over time. A more distant future usually yields a larger expected consumption and a larger uncertainty. The risk-averse and prudent representative agent's willingness to purchase zero-coupon bonds with that long maturity is reduced by the larger expected consumption, and is increased by the larger uncertainty. Therefore, as suggested by approximation (3), an increasing (decreasing) yield curve is obtained if the wealth effect becomes more (less) dominant compared to the precautionary effect when considering longer time horizons.

To illustrate, let us consider a simple case. Suppose that  $u(c) = c^{1-\gamma}/(1-\gamma)$ , which implies that  $R(c) = \gamma$  and  $P(c) = \gamma + 1$  for all  $c$ . Suppose also that the logarithm of consumption follows a stationary Brownian motion:<sup>3</sup>

$$d \ln c_t = \mu dt + \sigma dz_t, \quad (4)$$

---

<sup>3</sup>Using Ito's Lemma, this is equivalent to assume that  $dc/c = (\mu + 0.5\sigma^2)dt + \sigma dz$ .



where  $\mu$  and  $\sigma$  are two scalars measuring respectively the mean and standard deviation of the change in log consumption. It implies that the logarithm of consumption at date  $t$  is normally distributed with mean  $\mu t + \ln c_0$  and variance  $\sigma^2 t$ . This implies in turn that

$$\frac{Eu'(\tilde{c}_t)}{u'(c_0)} = E \exp[-\gamma (\ln \tilde{c}_t - \ln c_0)] = \exp[-\gamma (\mu t - 0.5\gamma\sigma^2 t)].$$

Thus, using equation (2) yields<sup>4</sup>

$$r_t = \delta + \gamma\mu - 0.5\gamma^2\sigma^2. \quad (5)$$

This shows that when relative risk aversion is constant (CRRA) and the growth rate of the economy follows a stationary Brownian motion, a longer time horizon yields an increase in the wealth effect and an increase in the precautionary effect that exactly compensate each other, yielding a flat yield curve.

Gollier (2002 a,b) characterized the conditions on preferences that imply a monotone yield curve under the assumption of a stationary Brownian motion. For example, he shows that increasing relative risk aversion implies an increasing yield curve if the probability of recession is small enough ( $\mu/\sigma \gg 0$ ). In this paper, we follow a more standard strategy which consists in relaxing the assumption of a stationary Brownian motion. This is relaxed by assuming that the mean  $\mu$  and/or the volatility  $\sigma$  of the consumption growth process are path-dependent, i.e., that the growth at time  $t$  depends upon the growth in the periods preceding  $t$ . In a word, we assume that future growth rates are predictable. The typical methodology in the literature on the term structure of interest rates is to assume the following time series model:

$$\begin{aligned} d \ln c_t &= \mu(s)dt + \sigma_c(s)dz_t, \\ ds &= g(s)dt + \sigma_s(s)dz_t. \end{aligned}$$

---

<sup>4</sup>We can reconcile equations (3) and (5) by observing that the growth rate of expected consumption equals  $\mu + 0.5\sigma^2$ . This implies that equation (5) can be rewritten as

$$r_t = \delta + R \frac{dEc_t}{c_t} - 0.5RP\sigma^2.$$

This proves that approximation (3) is exact in this case.

Both the mean and the volatility of the growth rate of the economy are affected by a state variable (also called a "factor")  $s$  that itself follows a potentially non-stationary Brownian motion. The special case of a deterministic process for the state variable ( $\sigma_s = 0$ ) is easy to treat using the above integration method. For example, when  $\sigma_c(s) \equiv \sigma$ , we easily obtain in the CRRA case that

$$r_t = \delta + \gamma m(t) - 0.5\gamma^2\sigma^2, \quad (6)$$

where  $m(t) = t^{-1} \int_0^t \mu(s(\tau))d\tau$  is the mean change in log consumption in period  $[0, t]$ , and  $s(\tau)$  is the solution of the differential equation  $s' = g(s)$  with initial condition  $s(0) = s_0$ . Only the wealth effect is affected by the deterministic change in the expectation  $\mu$  about the growth rate of the economy. These changes in expectation explain why the yield curve is usually not flat for short and medium time-horizons. For example, the expectation of an accelerating growth implies an increasing yield curve. Observe from (6) that the unpredictable shocks in changes in log consumption have no effect on the shape of the yield curve. It only shifts it downwards.

The complexity of the theory on the yield curve comes from the stochastic component of the motion of the state variable  $s$  ( $\sigma_s \neq 0$ ). In this paper, we isolate two effects of these predictable changes in expectations. Suppose first that the volatility  $\sigma_c$  of the growth rate of the economy is constant. When  $\sigma_c$  and  $\sigma_s$  have the same sign, and when  $\mu$  is increasing in  $s$ , the expected future growth rate of consumption is positively correlated with the short-term growth rate. More precisely, an increase in the stochastic component  $dz_t$  of the short-term growth yields a first-degree stochastic dominant shift in the future growth rate. In section 3, we examine the effect of this positive correlation on the shape of the yield curve. Alternatively, suppose that the expected growth rate  $\mu$  of the economy is state-independent, and that the volatility of the growth rate is increasing in the state variable. Then, if  $\sigma_c$  and  $\sigma_s$  have the same sign, the volatility of the future growth rate of the economy is positively correlated with the short-term growth rate. More precisely, an increase in the growth rate  $dz_t$  in the short run yields a second-degree stochastic shift in the future growth rate. We examine the effect of this type of statistical relations on the shape of the yield curve in section 4.

### 3 First-degree stochastic correlations

In this section, we consider an arbitrary stochastic process for  $\tilde{c}_t$ . We examine the effect of positive serial correlations in changes in consumption on the interest rate associated to maturity  $T$ . To do so, let us split period  $[0, T]$  into two subperiods  $[0, t]$  and  $[t, T]$  for some arbitrary date  $t < T$ . Let  $\tilde{x}_1$  denote the change in consumption during the first subperiod  $[0, t]$ , and  $\tilde{x}_2 | x_1$  the change in the consumption over period  $[t, T]$  conditional to  $x_1$ . It implies that consumption at date  $T$  equals  $c_0 + \tilde{x}_1 + \tilde{x}_2 | \tilde{x}_1$ . Let  $G(\cdot)$  denote the cumulative distribution function of  $\tilde{x}_1$ :  $G(x) = \Pr[\tilde{x}_1 < x]$ . Let also  $F(\cdot | x_1)$  be the cumulative distribution of  $\tilde{x}_2$  conditional to  $x_1$ :  $F(x | x_1) = \Pr[\tilde{x}_2 < x | x_1]$ . Following Lehman (1966), we propose the following definition.

**Definition 1** *Consider a pair of random variables  $(\tilde{x}_1, \tilde{x}_2)$  with marginal cdf  $G$  for  $\tilde{x}_1$  and cdf  $F$  for  $\tilde{x}_2$  conditional to  $x_1$ . We say that there is a positive FSC correlation between  $\tilde{x}_1$  and  $\tilde{x}_2$  if  $F$  is nonincreasing in  $x_1$  for all  $x_2$ .*

In other words, an increase in  $x_1$  generates a first-order stochastic dominant shift in the conditional distribution of  $\tilde{x}_2$ . Milgrom (1981) uses this concept to define the notion of a good news. An example of stochastic process that satisfies the FSC property is the AR(1) process  $\tilde{x}_2 | x_1 = \phi x_1 + \tilde{\varepsilon}$  with a positive  $\phi$ .

The long-term interest rate in such an economy equals

$$r_T = \delta - \frac{1}{T} \ln \frac{Eu'(c_0 + \tilde{x}_1 + (\tilde{x}_2 | \tilde{x}_1))}{u'(c_0)}. \quad (7)$$

We want to compare this rate to the one that would prevail in an economy with the same marginal distributions for  $\tilde{x}_1$  and  $\tilde{x}_2$ , but with no serial correlation between them. Let  $\tilde{x}_2$  denote the unconditional change in consumption in the second subperiod. In the economy without any serial correlation, the long-term interest rate would equal

$$\hat{r}_T = \delta - \frac{1}{T} \ln \frac{Eu'(c_0 + \tilde{x}_1 + \tilde{x}_2)}{u'(c_0)}. \quad (8)$$

Interest rate  $\hat{r}_T$  would be what one would obtain from the calibrated model by assuming independence and by using the observed variance of annual changes in consumption as the estimation of  $Var(\Delta c)$ . We want to determine the

conditions under which  $r_T$  is smaller than  $\widehat{r}_T$ , when  $\widetilde{x}_2 \mid \widetilde{x}_1$  exhibits positive FSC correlation with respect to  $\widetilde{x}_1$ . There is a simple intuition for why this should be the case. The existence of a positive correlation in the changes in consumption tends to magnify the long-term risk compared to short-term risks. This induces the prudent representative agent to purchase more zero-coupon bonds with a long maturity, thereby reducing the equilibrium long-term rate. Comparing (7) and (8) implies that  $r_T$  is smaller than  $\widehat{r}_T$  if

$$Eu'(c_0 + \widetilde{x}_1 + \widetilde{x}_2 \mid \widetilde{x}_1) \geq Eu'(c_0 + \widetilde{x}_1 + \widetilde{x}_2). \quad (9)$$

The following Lemma is useful to examine this problem.

**Lemma 1** *Consider a differentiable function  $h$  defined in a domain  $D$  of  $\mathbb{R}^2$ , together with any pair of random variables  $(\widetilde{x}_1, \widetilde{x}_2 \mid \widetilde{x}_1)$  with support in  $D$  that satisfies positive first-order correlation and whose support is in the domain of  $h$ . Then,*

$$Eh(\widetilde{x}_1, \widetilde{x}_2 \mid \widetilde{x}_1) \geq Eh(\widetilde{x}_1, \widetilde{x}_2) \quad (10)$$

*if and only if  $h$  is supermodular, i.e., if  $\partial h / \partial x_2$  is increasing in  $x_1$ .*

*Proof:* See the appendix.<sup>5</sup>

Applying this lemma to condition (9) requires using function  $h(x_1, x_2) = u'(c_0 + x_1 + x_2)$ . It is supermodular if the representative agent is prudent.

**Proposition 1** *The presence of any positive first-order stochastic correlation in changes in consumption reduces the long-term risk-free rate if and only if the representative agent is prudent.*

This result confirms our intuition: positive FSC correlation in changes in consumption raises the riskiness of consumption at date  $T$ , without changing its expected value. Under prudence, this reduces the interest rate associated to maturity  $T$ . It tends to generate a downward-sloping yield curve.

It would have been more fashioned to define  $\widetilde{x}_1$  and  $\widetilde{x}_2 \mid x_1$  as the (conditional) changes in *log* consumption over respectively subperiods  $[0, t]$  and  $[t, T]$ . This change the nature of the comparative static exercise because the

---

<sup>5</sup>We can also prove that if  $h$  is supermodular, then condition (10) is satisfied if and only if  $(\widetilde{x}_1, \widetilde{x}_2)$  exhibits positive FSC.

unconditional expectation of the log consumption is not the same as the log of the unconditional expectation of consumption. Because  $\tilde{c}_T = c_0 e^{\tilde{x}_1 + \tilde{x}_2 | \tilde{x}_1}$  when  $x_i$  denotes the change in log consumption, we can use Lemma 1 to obtain the following alternative result. Observe that  $h(x_1, x_2) = u'(c_0 e^{x_1 + x_2})$  is supermodular if relative prudence  $P(c) = -cu'''(c)/u''(c)$  is larger than unity.

**Proposition 2** *The presence of any positive first-order stochastic correlation in changes in log consumption reduces the long-term risk-free rate if and only if relative prudence is larger than unity.*

Similarly, the long-term risk-free rate is increased by any negative FSC correlation if and only if relative prudence is larger than unity. Observe that when relative risk aversion is constant ( $u(c) = c^{1-\gamma}/(1-\gamma)$ ), relative prudence is also constant and is equal to relative risk aversion plus one. Thus, CRRA implies that relative prudence is always larger than unity. When relative risk aversion is constant, positive (negative) FSC correlation in changes in log consumption always reduces (raises) the long-term risk-free rate.

It is easy to exhibit utility functions that are concave but whose relative prudence is not larger than unity. For example, the simplest departure of CRRA with  $u(c) = (c+k)^{1-g}/(1-g)$ ,  $k > 0$ , implies a relative prudence  $P(c) = (1+g)c/(c+k)$ . For such a concave utility function, relative prudence tends to zero with  $c$ . At early stages of its development, this economy may have an upward sloping yield curve even if growth rates are positively FSC correlated. This comes from an implicit wealth increase. Observe that in spite of the fact that the decorrelation does not affect the unconditional expected cumulative change in log consumption, the unconditional expected cumulative change in the *level* of consumption is increased by the presence of positive FSC correlation. This can be checked by using function  $h(x_1, x_2) = e^{x_1 + x_2}$  in the Lemma. This implicit increase in expected future incomes reduces the willingness to save for the long term, and it requires an increase in the corresponding interest rate. Therefore, one needs a sufficiently strong precautionary effect to dominate this opposite wealth effect. By Proposition 2, it requires that relative prudence be larger than unity.

## 4 Second-degree stochastic correlations

A natural extension of this work is to examine economies where the changes in consumption  $\tilde{x}_1$  and  $\tilde{x}_2$  are statistically related according to the positive second-degree stochastic correlation (SSC) property. This is the case when an increase in the first period change in consumption raises the risk associated to the second period change in consumption in the sense of Rothschild and Stiglitz (1970). In other words, the volatility of economic growth is increased after a boom, and it is reduced after a downturn. An example of such heteroskedastic process is  $\tilde{x}_2 = \mu + x_1\tilde{\varepsilon}$ , with  $E\tilde{\varepsilon} = 0$  and  $\tilde{\varepsilon}$  independent of  $\tilde{x}_1$ .

**Definition 2** Consider a pair of random variables  $(\tilde{x}_1, \tilde{x}_2 | \tilde{x}_1)$  with marginal cdf  $G$  for  $\tilde{x}_1$  and cdf  $F$  for  $\tilde{x}_2$  conditional to  $x_1$ . We say that there is a positive SSC correlation between  $\tilde{x}_1$  and  $\tilde{x}_2$  if  $q(x_2 | x_1) = \int^{x_2} F(y | x_1)dy$  is non-decreasing in  $x_1$  for all  $x_2$ , and if  $E[\tilde{x}_2 | x_1]$  is independent of  $x_1$ .

We want to determine the effect of such statistical relationship in changes in consumption over time on the long-term interest rate. As in the previous section, we compare an economy  $(\tilde{x}_1, \tilde{x}_2 | \tilde{x}_1)$  with positive SSC with another one  $(\tilde{x}_1, \tilde{x}_2)$  in which changes in consumption are serially independent. The following Lemma is helpful to solve this problem.

**Lemma 2** Consider a twice differentiable function  $h$  defined in a domain  $D$  of  $R^2$ , together with any pair of random variables  $(\tilde{x}_1, \tilde{x}_2 | \tilde{x}_1)$  with support in  $D$  that satisfies positive second-degree correlation and whose support is in the domain of  $h$ . Then,

$$Eh(\tilde{x}_1, \tilde{x}_2 | \tilde{x}_1) \leq Eh(\tilde{x}_1, \tilde{x}_2)$$

if and only if  $-\partial h / \partial x_2$  is supermodular, i.e., if  $\partial^2 h / \partial x_2^2$  is non-increasing in  $x_1$ .

*Proof:* See the appendix.

Notice that if we apply this lemma to function  $h(x_1, x_2) = v(x_1 + x_2)$  for any function  $v$  with a convex first derivative, we obtain the result that, under positive SSC,  $\tilde{x}_1 + \tilde{x}_2 | \tilde{x}_1$  is a downside reduction in risk with respect to  $\tilde{x}_1 + \tilde{x}_2$ , as defined by Geiss, Menezes and Tressler (1980). It implies that

these two sums have the same mean and the same variance, but the first has a larger skewness than the second. This is not a surprise since a downside reduction in risk is obtained by transferring zero-mean lotteries from low wealth states to larger wealth levels, as explained by Eeckhoudt, Gollier and Schneider (1995).

Applying this to the term structures given by (7) and (8) with  $h(x_1, x_2) = u'(c_0 + x_1 + x_2)$ , we obtain the following Proposition.

**Proposition 3** *The presence of any positive second-degree stochastic correlation in changes in consumption raises the long-term risk-free rate if and only if the third derivative of the utility function is non-increasing.*

Observe that condition  $u'''' \leq 0$  – which is sometimes referred to as "temperance" – is quite natural. It is necessary for the intuitive property that absolute prudence  $-u'''/u''$  is decreasing in wealth, as explained by Kimball (1990). Moreover, all CRRA functions satisfy this condition. There is a simple intuition for why a positive SSC in  $\Delta c$  should raise the equilibrium long-term rate. Indeed, a positive SSC implies an increase in skewness of  $\tilde{c}_T = c_0 + \tilde{x}_1 + \tilde{x}_2$ . When  $u''''$  is negative, the increased skewness in  $\tilde{c}_T$  reduces  $Eu'(\tilde{c}_T)$ , which yields a reduction in the demand for the zero-coupon bond which matures at  $T$ . This raises its equilibrium rate of return.

As in the previous section, we could have defined  $\tilde{x}_1$  and  $\tilde{x}_2 \mid x_1$  as the changes in log consumption. We should then use Lemma 2 with  $h(x_1, x_2) = u'(c_0 e^{x_1+x_2})$ . This yields the following result.

**Proposition 4** *Suppose that  $u$  is four times differentiable. The presence of any positive second-order stochastic correlation in changes in log consumption raises the long-term risk-free rate if and only if  $f(c) = u''(c) + 3cu'''(c) + c^2u''''(c)$  is uniformly negative.*

When relative risk aversion is constant,  $f(c)$  equals  $-\gamma^3 c^{-\gamma-1}$  which is uniformly negative. This implies that a positive SSC correlation in  $\Delta \ln c$  always raises the long-term interest rate for that family of utility functions. This tends to generate an upward-sloping yield curve. Notice that condition  $f \geq 0$  in Proposition 4 adds the two terms  $u''$  and  $3cu'''$  to condition  $u'''' < 0$  in Proposition 3. The first additional term is due to the fact that the decorrelation of changes in log consumption raises the expected consumption

at  $T$ . This reinforces the initial reason for a longer long-term rate. Also, the decorrelation yields an increase in the second moment of  $\tilde{c}_T$ . Under prudence, this tends to reduce the long-term rate. This explains the opposite term  $3cu''' > 0$  in the definition of function  $f$ . As said above, the two negative terms must always dominate this positive term in the case of CRRA.

## 5 Relations with the existing literature on the term structure

Our aim in this section is not to provide a survey of the enormous existing literature on the term structure of interest rates. Rather, we want here to illustrate our results by comparing them to those of the two most famous time series models used in this literature: Vasicek (1977) and Cox, Ingersoll and Ross (1985a,b). In most existing models of the term structure, the state variable is the instantaneous interest rate  $r_0$ . For example, in the model of Vasicek (1977), the time series model for the stochastic discount factor  $\Lambda(t) = e^{-\delta t} u'(c_t)/u'(c_0)$  takes the following form:

$$\begin{aligned}\frac{d\Lambda}{\Lambda} &= -r_0 dt - \sigma_\Lambda dz \\ dr_0 &= \phi(\bar{r} - r_0)dt + \sigma_r dz.\end{aligned}$$

The term structure is then obtained by rewriting the equilibrium condition (1) as  $r_t = -t^{-1} \ln E\Lambda_t$ . Parameter  $\sigma_r$  is the conditional volatility of the instantaneous interest rate. Parameter  $\phi$  controls mean reversion: if  $\phi = 0$ , the instantaneous risk-free rate  $r_0$  exhibits no tendency to return to any specific value. When  $\phi > 0$ , the instantaneous rate  $r_0$  is expected to return to its mean  $\bar{r}$  at rate  $\phi$ . With a typical value of  $\phi = 0.3 \text{ year}^{-1}$ ,<sup>6</sup> this yields a half-life time of 2.3 years for a shock on the instantaneous interest rate.

---

<sup>6</sup>For example, Backus, Foresi and Telmer (1998) consider  $\phi = 0.024 \text{ month}^{-1}$ .



Assuming CRRA, this model can be rewritten as<sup>7</sup>

$$\begin{aligned} d \ln c &= \frac{r_0 - \delta + 0.5\sigma_\Lambda^2}{\gamma} dt + \frac{\sigma_\Lambda}{\gamma} dz \\ dr_0 &= \phi(\bar{r} - r_0)dt + \sigma_r dz. \end{aligned} \quad (11)$$

We recognize here various elements affecting the yield curve. First, we observe that the conditional volatility of the growth rate of consumption is a constant  $\sigma_\Lambda/\gamma$ . This excludes the existence of SSC correlation. Second, when  $\phi \neq 0$ , there is a deterministic component in the expectations about the future growth of the economy. When the current level of  $r_0$  is below  $\bar{r}$ , one anticipates an accelerating economic growth, which makes the yield curve increasing for short and medium maturities. In fact, when there is no serial correlation ( $\sigma_r = 0$ ), using equation (6) yields

$$r_t = \bar{r} + (r_0 - \bar{r}) \frac{1 - e^{-\phi t}}{\phi t} \quad (12)$$

The mean yield curve, which is obtained by taking  $r_0 = \bar{r}$ , is completely flat in that case. Thus, a non-zero slope to the mean yield curve can be obtained only by introducing some permanency to shocks on  $\ln c$ . Indeed, when  $\sigma_r \neq 0$  and has the same sign as  $\sigma_\Lambda$ , there is positive FSC correlation in the time series of  $\Delta \ln c$ . As claimed by Proposition 2, this tends to reduce the long-term interest rates, thereby yielding a reduction in the slope of the yield curve. This is confirmed by the analytical solution obtained by Vasicek (1977) which adds a third term  $v_t$  in the right-hand side of (12), with  $v_t$  being negative and decreasing in  $t$  when  $\sigma_r \sigma_\Lambda$  is positive.<sup>8</sup> In order to explain the upward-sloping mean yield curve, as documented for

---

<sup>7</sup>By Ito's Lemma, the reader can check that

$$-\delta dt - \gamma d \ln c = d \ln \Lambda = \frac{d\Lambda}{\Lambda} - 0.5\sigma_\Lambda^2 dt.$$

<sup>8</sup>Vasicek (1977) obtained

$$v_t = \left[ \frac{\sigma_r^2}{2\phi^2} + \frac{\sigma_r \sigma_\Lambda}{\phi} \right] \left[ \frac{1 - e^{-\phi t}}{\phi t} - 1 \right] + \frac{\sigma_r^2}{4\phi^3} \frac{(1 - e^{-\phi t})^2}{t}.$$

example by Backus, Foresi and Telmer (1998), one needs to have negative FSC correlations in  $\Delta \ln c$ . Assuming without loss of generality that  $\sigma_r$  is positive, this requires that  $\sigma_\Lambda/\gamma$  be sufficiently negative. This sheds light on why "a little experimentation tells us that  $\sigma_\Lambda$  governs the average slope of the yield curve, with negative values required to produce an upward slope we observe in the data" (Backus, Foresi and Telmer (1998)).

The Cox-Ingersol-Ross (CIR) model adds a square root terms in the volatility, which makes it time-varying:

$$\begin{aligned} d \ln c &= \frac{r - \delta + 0.5\sigma_\Lambda^2}{\gamma} dt + \frac{\sigma_\Lambda\sqrt{r}}{\gamma} dz \\ dr &= \phi(\bar{r} - r)dt + \sigma_r\sqrt{r}dz. \end{aligned} \tag{13}$$

This implies that a positive shock on the state variable  $r$  increases both the short term expected growth of the log consumption and its future volatility. This yields a positive SSC correlation of  $\Delta \ln c$ . This captures the fact that higher interest rates seem to be more volatile. As claimed in Proposition 4, this positive SSC in  $\Delta \ln c$  generates an unambiguous increase in the long-term rate compared to what is obtained in Vasicek's model. However, as explained for example by Backus, Foresi and Telmer (1998), the sophistication introduced in the CIR model does not change the shape of the yield curve markedly.

We hereafter focus on quantifying the effect of FSC correlations. What do we know about the time series of changes in log consumption? Following Cochrane (1988) and Cogley (1990), let us define the variance ratio as

$$V(t) = \frac{t^{-1}Var(\ln \tilde{c}_t - \ln c_0)}{Var(\ln \tilde{c}_1 - \ln c_0)}.$$

The variance ratio associated to time horizon  $t$  equals the variance of the change in log consumption at horizon  $t$  divided by  $t$  times the variance of one year changes in log consumption.  $V(t)$  provides a relative measure of the uncertainty associated to  $\ln \tilde{c}_t | c_0$ . In the case of serially independent  $\Delta \ln c$ , this variance ratio is uniformly equal to unity.  $V > 1$  indicates a positive FSC correlation in  $\Delta \ln c$ , whereas  $V < 1$  indicates a negative FSC correlation. Cochrane (1988) estimated  $V(t)$  for  $t = 1, \dots, 30$  by using data on the log real per capita GNP in the United States, 1869-1986. Figure 1 summarizes his estimates. The per period risk attached to time horizons less than 3

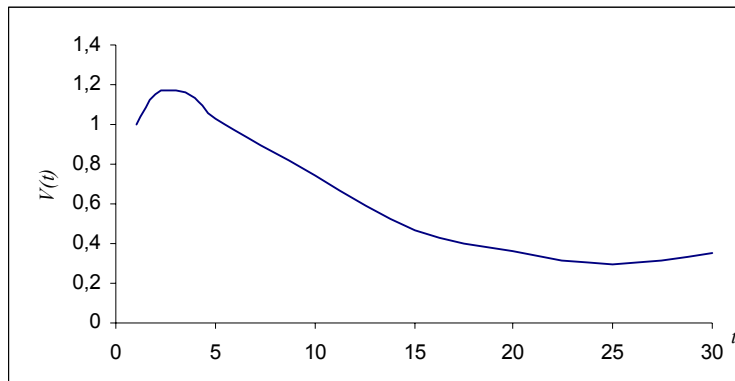


Figure 1: The variance ratio for the log real per capita GNP, 1869-1986. (Source: Cochrane (1988)).

years is increasing. This comes from the positive serial correlation of growth at high frequency. On the contrary,  $V$  is decreasing in  $t$  for time horizons longer than 3 years. It tends to roughly one-third. Long horizons entail only one-third per period risk than short horizons, when risk is measured by the variance of log consumption. This means that shocks to U.S. GNP are mostly temporary. Thus, in the U.S. context,  $\Delta \ln c$  exhibits negative FSC correlations for long maturities. According to Proposition 2, this should generate an upward-sloped unconditional yield curve.

Taking equation (5) as an approximation because  $\tilde{c}_T | c_0$  is generally not lognormal, we can use Cochrane's  $V$  ratio to obtain the following formula for the yield curve:

$$r_t = \delta + \gamma\mu - 0.5\gamma^2\sigma^2V(t), \quad (14)$$

where  $\sigma = \sqrt{\text{Var} \ln \tilde{c}_1 | c_0}$  is estimated to be 6.1% per year by Cochrane. Let us fix the expected growth rate of the economy to  $\mu = 1.8\%$  per year, which is the average growth rate of real per capita consumption in the United States over the period 1889-1978 (Kocherlakota (1996)). In Figure 2, we draw the yield curve  $r_t - \delta$  computed from equation (14) for four different degrees of relative risk aversion:  $\gamma = 1, 2, 4$  and 6. The upward-sloping shape of the average yield curve is familiar. Using U.S. monthly data from January 1952

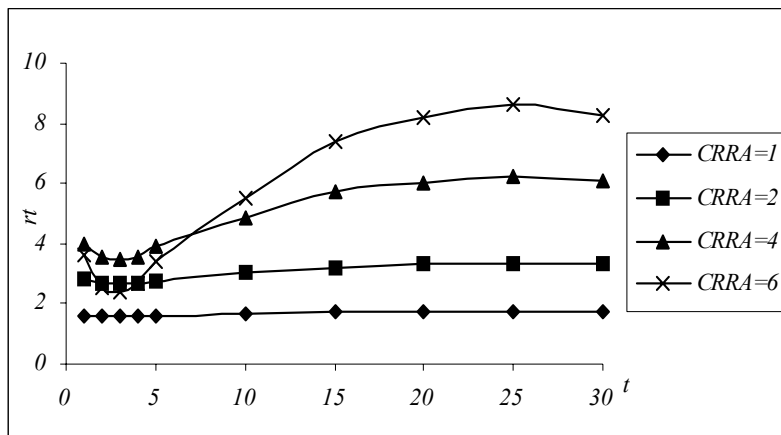


Figure 2: The average yield curve using Cochrane's ratio.

to February 1991, Backus, Foresi and Telmer (1998) estimated the mean 1-month yield to be 5.314%, going up to 6.693% for the yield corresponding to a 10-year maturity.

Cogley (1990) showed that the pattern of the variance ratio exhibits much differences across countries. In fact, the evidence indicates that the relative stability of long-term growth is unique to the United States. Using annual real per capita GDP, 1871-1985, he computed the variance ratio  $V(20)$  for a twenty years horizon. He found 0.77 for Canada, which means that, as in the U.S. but at a smaller degree, this country should have a mean 20-year maturity yield that is larger than the short-term yield. He also found 0.97 for Sweden, 1.03 for the United Kingdom, and 1.09 for Denmark. The yield curve should be almost flat in these countries. But he also obtained 1.4 for Australia, 1.84 for France and 2.02 for Italy. In these countries, the per-period growth risk is increasing with time horizon. It implies that the long-term interest rate should be smaller than the short-term one. For France, using Maddison (1991), we estimated  $\mu = 1.97\%$  and  $\sigma = 8.05\%$ . For  $\gamma = 2$ , it makes a risk-free rate  $r_t$  equaling  $\delta + 2.66\%$  for the short term, and  $\delta + 1.58\%$  for the long run. For  $\gamma = 4$ , it generates  $\delta + 2.76\%$  and  $\delta - 1.54\%$  respectively for the short term and for the long term.

## 6 What about far-distant maturities?

As explained in the introduction, our aim is to determine whether the discount rates that we should use for very long maturities (in the hundreds and thousands years) are smaller than the discount rates used for the more standard maturities considered in finance and that can be observed on financial markets. Whereas most of the existing literature provides a positive analysis of the term structure, our aim in this section is more normative. As explained earlier in this paper, the evidence that there is some mean-reversion in consumption growth with a half-life of 2.3 years is important to explain the shape of the yield curve observed on financial markets. It is of course irrelevant to determine the rate that we should use to discount the cash-flows associated with the consequences of, say, global warming or nuclear wastes in 200 years. In this section, we show how the results presented in sections 3 and 4 are useful to make recommendations for such long time horizons.

We examine two possible dynamic processes governing the long-term growth of the economy. The first one involves Poisson jumps, whereas the other one exhibits some parameter uncertainty.

### 6.1 Poisson jumps in the growth of consumption

We reproduced in Table 1 the estimation by DeLong (2004) of the worldwide GDP per capita over the last 7 millennia. A striking feature of the economic growth that we observed over this essential period of homo sapiens is the jump in the average growth rate that has been experienced at the end of the eighteenth century. The debate on what Society should do for the future is much influenced by this fact, and by the idea that in the future, economic growth could go back to its secular zero level. The arguments for and against the existence of such risk are based on the way we interpret what happened at the end of the eighteenth century. Models abound that rely on human capital, availability of natural resources, specialization of tasks,.... We will not go into this controversy. As earlier in this paper, the economic growth process will not be endogenized.

Year	GDP per capita	Annualized growth rate
-5000	130	
-1000	160	0.005 %
1	135	-0.017 %
1000	165	0.020 %
1500	175	0.012 %
1800	250	0.119 %
1900	850	1.224 %
1950	2030	1.741 %
1975	4640	3.307 %
2000	8175	2.265 %

Table 1: Worldwide GDP per capita (in year-2000 international dollars) and annualized growth rate (in %). Source: DeLong (2004)

We assume that the economy can be in one of two observable states. In the low-growth state, the drift of log consumption is  $\mu_1$  and its volatility is  $\sigma$ . In the high-growth state, the drift of log consumption is  $\mu_2 > \mu_1$ , but the volatility remains the same. The economy switches from one state to the other each time a Poisson event occurs. In discrete time, the model is written as

$$\begin{aligned}\ln \tilde{c}_{t+1} &= \ln c_t + \mu_t + \sigma \tilde{\varepsilon}_t \\ \mu_{t+1} &= (\mu_t, 1 - \pi; \mu'_t, \pi),\end{aligned}$$

where  $\mu'_t$  is  $\mu_2$  if  $\mu_t = \mu_1$ , otherwise  $\mu'_t = \mu_1$ . We assume that  $\tilde{\varepsilon}_t$  is standard normal with no serial dependency. When the drift is  $\mu_1$  (resp.  $\mu_2$ ) in period  $t$ , there is a probability  $\pi$  that it will switch to drift  $\mu_2$  (resp.  $\mu_1$ ) in the next period. We suppose that the probability of switching is very small, which implies that there is a lot of persistence in shocks. Of course, this yields FSC correlations in growth rates. There is positive FSC correlations as soon as  $\pi$  is less than 0.5. Thus, applying Proposition 2 implies that the far-distant discount rate is smaller than in the equivalent economy with a serially uncorrelated growth process. In Figure 3, we describe the yield curve in the following economy: In the high-growth state, the drift of log consumption is  $\mu_2 = 2\%$  per year, whereas it is  $\mu_1 = 0\%$  in the low-growth state. The critical parameter is the switching probability  $\pi$  per year. We assume that the switching probability  $\pi$  per year is 1%. Relative risk aversion is assumed

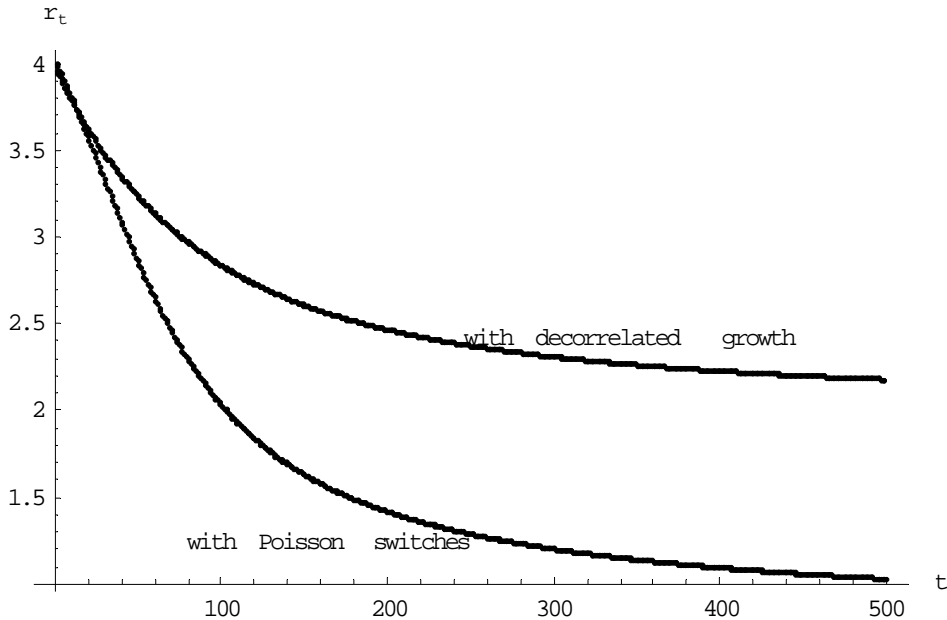


Figure 3: The yield curve with a two-state Poisson switch process for the growth of log consumption, in the high-growth state.

to be constant and equal to  $\gamma = 2$ . We consider a rate  $\delta$  of pure preference for the present and a conditional volatility  $\sigma$  of log consumption such that  $\delta - 0.5\gamma^2\sigma^2 = 0$ .<sup>9</sup> We assume that the economy is currently in the high-growth state. Figure 3 also describes the yield curve in the equivalent economy with a serially uncorrelated growth process. The details of the computational method generating these two yield curves are given in the appendix. Whereas the discount rate is 4% in the "short" term, it goes down to 1.03% for cash-flows with a 500-year maturity.

## 6.2 A model with parameter uncertainty

As invoked in the so-called *Peso-problem*, the absence of sufficiently large data to estimate the long-term growth process of the economy implies that

<sup>9</sup>As usual, considering other values for  $\delta$  and  $\sigma$  would just shift the yield curve vertically.

the parameters controlling the growth process are uncertain and subject to learning in the future. Weitzman (2004) shows that, under CRRA and geometric Brownian motion, the uncertainty surrounding the true drift of log consumption justifies selecting a smaller rate to discount distant cash-flows. In this section, we explain this phenomenon and we provide a more general model than in Weitzman (2004). The intuition for why the uncertainty surrounding the drift of the growth process justifies selecting a smaller long discount rate is immediate from Proposition 1. Indeed, the observation of a high growth in the short run induces the representative agent to revise her expectations about the distribution of growth upwards. Thus, Bayesian learning generates positive FSC correlation in the perceived growth process. This magnifies the long-term risk, thereby inducing the prudent representative agent to make more effort for the distant future. As shown by Proposition 1, this result requires no other restriction on preferences than prudence.

We suppose that the growth process is stationary. Let  $\tilde{x}(\theta)$  denote the per-period change in log consumption, conditional to parameter  $\theta$ . The current prior beliefs of the representative agent are described by the distribution of random variable  $\tilde{\theta}$ . Under CRRA preferences, the current yield curve takes the following form:<sup>10</sup>

$$r_t = \delta - \frac{1}{t} \ln E\alpha(\tilde{\theta})^t, \quad (15)$$

where function  $\alpha$  is defined as

$$\alpha(\theta) = Ee^{-\gamma\tilde{x}(\theta)}. \quad (16)$$

Using Jensen's inequality, we directly get the following result, which is related to Proposition 2.

**Proposition 5** *Suppose that the representative agent has CRRA preferences, and that the process of log consumption is stationary with an unknown parameter  $\theta$ . Under such circumstances, the socially efficient discount rate  $r_t$  is non-increasing with time horizon  $t$ . It tends to the smallest possible rate  $\min_{\theta} [\delta - \ln \alpha(\theta)]$  when  $t$  tends to infinity.*

Proof: We have that

$$t^2 E \left( \alpha(\tilde{\theta}) \right)^t \frac{\partial r_t}{\partial t} = \left[ E\alpha(\tilde{\theta})^t \right] \left[ E \ln \alpha(\tilde{\theta})^t \right] - E\alpha(\tilde{\theta})^t \ln \alpha(\tilde{\theta})^t$$

---

<sup>10</sup>In the decorrelated economy, we just have  $\hat{r}_t = \delta - \ln E\alpha(\tilde{\theta})$ .



is nonpositive. Thus,  $r_t$  is non-increasing in  $t$ . Moreover, as is well-known, when  $t$  tends to infinity,  $\left[ E \left( \alpha(\tilde{\theta}) \right)^t \right]^{1/t}$  tends to  $\max_{\theta} \alpha(\theta)$ , which implies that  $r_t$  tends to  $\delta - \ln \max_{\theta} \alpha(\theta)$ . ■

Notice that  $r_t$  is strictly decreasing in  $t$  as soon as there exists two values of the parameter,  $\theta$  and  $\theta'$  such that  $\alpha(\theta) \neq \alpha(\theta')$ . This result and its proof is reminiscent – but is conceptually different – of a recommendation in Weitzman (1998) for why ”the far-distant future should be discounted at its lowest possible rate”. Notice also that the above result does not require any condition on the distribution of changes in log consumption  $\tilde{x}(\theta)$ , or on the prior distribution of parameter  $\tilde{\theta}$ . Weitzman (2004) assumes that  $\tilde{x}(\theta)$  is normal with a known volatility  $\sigma$ , which implies that  $\alpha(\theta) = \exp(-\gamma\mu(\theta) + 0.5\gamma^2\sigma^2)$ . It implies in turn that the discount rate tends to  $\delta - 0.5\gamma^2\sigma^2 + \gamma \min_{\theta} \mu(\theta)$ . Because he also assumes that  $\mu(\tilde{\theta})$  is normally distributed, the discount rate goes to minus infinity for large maturities under this specification!

More realistic specifications of the per-period growth process and/or of the prior beliefs are thus welcomed. Equations (15) and (16) provide this simple and flexible framework. Consider for example the following numerical illustration. The relative risk aversion of the representative agent equals  $\gamma = 2$ . The change in log consumption is normal with conditional standard deviation  $\sigma(\theta)=6.1\%$ , whereas we assume that  $\delta - 0.5\gamma^2\sigma^2 = 0$ . The drift  $\mu$  is unknown, but it is either 3% or 0%. The prior belief is that there is a 2/3 probability that the true drift is 3%, yielding an expected drift of 2%. If it would be 3% for sure, the yield curve would be flat at 6%, whereas it would be equal to 0% in the low-growth scenario. In Figure 4, we draw the yield curve given the current parameter uncertainty. The learning process induces Society to use today a 0.22% rate per year to discount cash-flows realized in 500 years, whereas a discount rate of 4.0% per year is used for immediate benefits and costs.

## 7 Conclusion

A correct assessment of how much Society should invest for its own future is central to economic analysis. Many of us are now cooperating with various organizations to analyze environmental projects whose costs and benefits are spread over hundreds of years, in particular those linked to global warming

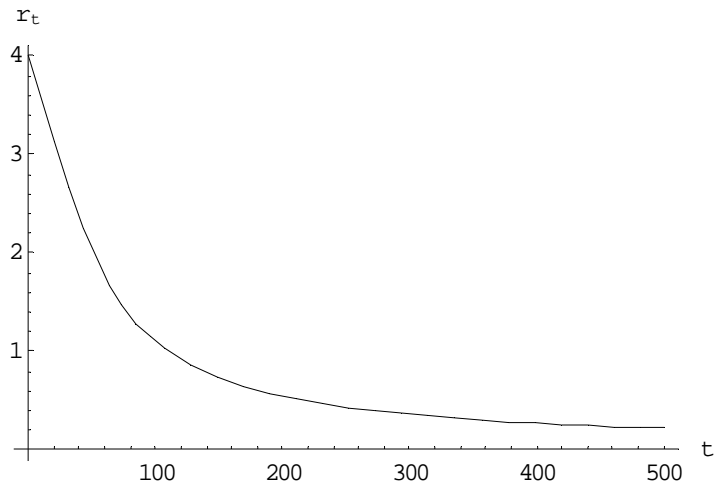


Figure 4: The yield curve with parameter uncertainty.

and nuclear waste disposals. We know that the most important parameter when using cost-benefit analysis for such long-lasting projects is by far the discount rate. We as a profession have not been very good in proposing an agreed-upon discount rate for the long term. Weitzman (2001) asked to more than 2000 professional Ph.D.-level economists about their own recommendation for the discount rate to be used for far distant real cash-flows. He reported a large disagreement on this matter. Moreover, he obtained a sample mean at around 4% per year, which is quite larger than the secular post-industrial-revolution real short-term interest rate of 1% (Kocherlakota (1996)). Economists seem to favor an upward-sloping discount yield curve.

The main message of the paper is that the shape of the term structure of discount rates depends essentially on our view about how the uncertainty on future aggregate consumption evolves with the time horizon. If this uncertainty increases at a rate larger than what would be obtained by a pure random walk for the per-period growth rate, the notion of prudence justifies using a downward-sloping term structure. This is the case when per-period growth rates exhibit positive first-degree stochastic correlations, as is the case with persistent shocks to growth rates, or when the drift of aggregate consumption is unknown. Our calibrations induce us to recommend using

an average yearly discount rate of 4% for short-term cash-flows, and a yearly discount rate between 1% and 2% for time horizons exceeding 400 years.

## REFERENCES

- Arrow, K.J., W.R. Cline, K.-G. Maler, M. Munasinghe, R. Squitieri and J.E. Stiglitz, (1996), Intertemporal equity, discounting and economic efficiency, in *Climate Change 1995 - Economic and Social Dimensions of Climate Change*, eds J.P. Bruce, H. Lee and E.F. Haites, Cambridge University Press, Cambridge U.K..
- Backus, D., S. Foresi and C. Telmer, (1998), Discrete-time models of bond pricing, NBER Working Paper 6736.
- Barsky, R.B., (1989), Why don't the prices of stocks and bonds move together?, *American Economic Review*, 79, 1132-1145.
- Cochrane, J.H., (1988), How big is the random walk in GNP?, *Journal of Political Economy*, 96, 893-920.
- Cochrane, J., (2001), *Asset Pricing*, Princeton University Press.
- Cogley, T., (1990), International evidence on the size of the random walk in output, *Journal of Political Economy*, 98, 501-518.
- Cox, J., Ingersoll, J., and S. Ross, (1985a), A theory of the term structure of interest rates, *Econometrica*, 53, 385-403.
- Cox, J., Ingersoll, J., and S. Ross, (1985b), An intertemporal general equilibrium model of asset prices, *Econometrica*, 53, 363-384.
- DeLong, B.J., (2004), Chapter 5: The reality of economic growth: History and prospect, <http://www.j-bradford-delong.net>.
- Eeckhoudt, L., C. Gollier. and T. Schneider, (1995), Risk aversion, prudence and temperance: A unified approach, *Economics Letters*, 48, 331-336.
- Estrella, A., and G.A. Hardouvelis, (1991), The term structure as a predictor of real economic activity, *Journal of Finance*, 46, 555-576.
- Geiss, C. , C. Menezes and J. Tressler, (1980), Increasing Downside Risk, *American Economic Review*, 70, 5, 921-931.

- Gollier, C., (2002a), Discounting an uncertain future, *Journal of Public Economics*, 85, 149-166.
- Gollier, C., (2002b), Time horizon and the discount rate, *Journal of Economic Theory*, 107, 463-473.
- Groom, B., P. Koundouri, E. Panopoulou and T. Pantelidis, (2004), Model selection for estimating certainty equivalent discount, mimeo, UCL, London.
- Kimball, M.S., (1990), Precautionary savings in the small and in the large, *Econometrica*, 58, 53-73.
- Kocherlakota, N.R., (1996), The Equity Premium: It's Still a Puzzle, *Journal of Economic Literature*, 34, 42-71.
- Lehmann, E.L., (1966), Some concepts of dependence, *Annals of Mathematical Statistics*, 37, 1137-1153.
- Leland, H., (1968), Savings and uncertainty: The precautionary demand for savings, *Quarterly Journal of Economics*, 45, 621-36.
- Maddison, A., (1991), *Phases of Economic Development*, Oxford Economic Press.
- Milgrom, P., (1981), Good news and bad news: Representation theorems and applications, *Bell Journal of Economics*, 12, 380-91.
- Newell, R., and W. Pizer, (2003), Discounting the benefits of climate change mitigation: How much uncertain rates increase valuations?, *Journal of Environmental Economics and Management*, 46 (1), 52-71.
- Piazzesi, M., (2003), Affine term structure models, *Handbook of Financial Econometrics*, forthcoming.
- Portney, P.R., and J. P. Weynant, eds., (1999), *Discounting and intergenerational equity*, Resources for the future, Washington, D.C..
- Rothschild, M. and J. Stiglitz, (1970), Increasing risk: I. A definition, *Journal of Economic Theory*, 2, 225-243.

- Vasicek, O., (1977), An equilibrium characterization of the term structure, *Journal of Financial Economics*, 5, 177-188.
- Weitzman, M.L., (1998), Why the far-distant future should be discounted at its lowest possible rate?, *Journal of Environmental Economics and Management*, 36, 201-208.
- Weitzman, M.L., (2001), Gamma discounting, *American Economic Review*, 91, 260-271.
- Weitzman, M.L., (2004), Statistical discounting of an uncertain distant future, mimeo, Harvard University.

### Proof of Lemma 1

Define function  $K$  as:  $K(x_2 | x_1) = F(x_2 | x_1) - \widehat{F}(x_2)$ , where  $\widehat{F}(x_2) = \int^{x_2} F(y | x_1) dG(x_1)$  is the unconditional CDF of  $\tilde{x}_2$ . For sufficiency, we need to prove that

$$X = Eh(\tilde{x}_1, \tilde{x}_2 | \tilde{x}_1) - Eh(\tilde{x}_1, \tilde{x}_2) = \iint h(x_1, x_2) dK(x_2 | x_1) dG(x_1)$$

is positive. For any given  $x_1$ , integration by parts yields

$$\int h(x_1, x_2) dK(x_2 | x_1) = - \int \frac{\partial h(x_1, x_2)}{\partial x_2} K(x_2 | x_1) dx_2. \quad (17)$$

It implies that

$$X = \int \left[ \int -\frac{\partial h(x_1, x_2)}{\partial x_2} K(x_2 | x_1) dG(x_1) \right] dx_2,$$

or equivalently,

$$X = \int E \left[ -\frac{\partial h(\tilde{x}_1, x_2)}{\partial x_2} K(x_2 | \tilde{x}_1) \right] dx_2. \quad (18)$$

Observe now that for any  $x_2$ ,  $-\partial h/\partial x_2$  is decreasing in  $x_1$  because  $h$  is supermodular. Moreover,  $K$  is decreasing in  $x_1$  for all  $x_2$  by definition of positive FSC. Therefore for any  $x_2$ , the covariance rule<sup>11</sup> implies that

$$E \left[ -\frac{\partial h(\tilde{x}_1, x_2)}{\partial x_2} K(x_2 | \tilde{x}_1) \right] \geq E \left[ -\frac{\partial h(\tilde{x}_1, x_2)}{\partial x_2} \right] E [K(x_2 | \tilde{x}_1)] = 0.$$

Since the integrand in (18) is positive for all  $x_2$ , so is the integral  $X$ . This proves the sufficiency part of the Proposition. For necessity, suppose by contradiction that  $-\partial h/\partial x_2$  be increasing in  $x_1$  in a neighborhood  $A$  of some  $(\bar{x}_1, \bar{x}_2)$ . Using a pair of random variables satisfying positive FSC whose support is in  $A$  would generate  $X \leq 0$ , a contradiction. ■

---

<sup>11</sup> $Ef(\tilde{x})g(\tilde{x}) \geq Ef(\tilde{x})Eg(\tilde{x})$  for all  $\tilde{x}$  if  $f'(x)g'(x)$  is nonnegative for all  $x$ . See for example Gollier (2001, section 6.4) for a formal proof.

## Proof of Lemma 2

We limit the proof to sufficiency. Let  $k(x_2 | x_1)$  denote  $\int^{x_2} K(y | x_1) dy$ . Integrating by parts the integral in the right-hand side of equation (17) yields

$$\int h(x_1, x_2) dK(x_2 | x_1) = -\frac{\partial h(x_1, x_2)}{\partial x_2} k(+\infty | x_1) + \int \frac{\partial^2 h(x_1, x_2)}{\partial x_2^2} k(x_2 | x_1) dx_2 \quad (19)$$

for all  $x_1$ . By construction, we have that

$$k(+\infty | x_1) = \int \left( F(y | x_1) - \widehat{F}(y) \right) dy = E[\tilde{x}_2 | x_1] - E[\tilde{x}_2] = 0$$

since the expectation of  $\tilde{x}_2$  is assumed to be independent of  $x_1$ . Thus we can use (19) to write

$$X = Eh(\tilde{x}_1, \tilde{x}_2 | \tilde{x}_1) - Eh(\tilde{x}_1, \tilde{x}_2) = \int E \left[ \frac{\partial^2 h(\tilde{x}_1, x_2)}{\partial x_2^2} k(x_2 | \tilde{x}_1) \right] dx_2.$$

Positive SSC means that  $k$  is increasing in  $x_1$  for all  $x_2$ . Because  $\partial^2 h / \partial x_2^2$  is decreasing in  $x_1$  by assumption, the covariance rule applied for each possible  $x_2$  implies that

$$X \leq \int E \left[ \frac{\partial^2 h(\tilde{x}_1, x_2)}{\partial x_2^2} \right] E[k(x_2 | \tilde{x}_1)] dx_2.$$

Because  $E k(x_2 | \tilde{x}_1)$  is zero for all  $x_2$  by construction, we obtain that  $X$  is nonpositive. ■



### Computational method used to draw Figure 3

We use the iterative method presented for example by Backus, Foresi and Telmer (1998) to compute the term structure in the two-state economy with Poisson switches. Let  $b_\tau^t$  denote the price at date  $\tau$  of a zero-coupon bond with maturity  $t$ . The CRRA representative agent should be indifferent to increase her demand for such bond, yielding the following equilibrium condition:

$$b_\tau^{t+1} = E e^{-\delta} \left( \frac{\tilde{c}_{\tau+1}}{c_\tau} \right)^{-\gamma} b_{\tau+1}^t. \quad (20)$$

Applying this condition for  $t = 1$  and observing that  $b_{t+1}^0 = 1$  yields

$$r_1 = -\ln b^1 = \delta - \frac{1}{2}\gamma^2\sigma^2 + \gamma\mu,$$

with  $b_\tau^t = b^t(\mu_\tau)$ . Iterating (20) forward generates the following formula:

$$\begin{aligned} f^1(\mu) &= 0 \\ f^{t+1}(\mu) &= -\frac{1}{\gamma} \ln \left[ (1 - \pi) e^{-\gamma(\mu + f^t(\mu))} + \pi e^{-\gamma(\mu' + f^t(\mu'))} \right] \\ \ln b^t &= -t(\delta - 0.5\gamma^2\sigma^2) - \gamma(\mu + f^t(\mu)) \end{aligned}$$

and, finally,

$$r_n = -\frac{1}{t} \ln b^t = \delta - \frac{1}{2}\gamma^2\sigma^2 + \gamma \frac{\mu + f^t(\mu)}{t}.$$

The analysis of the decorrelated economy is organized as follows. Let  $\tilde{y}_t$  be distributed as the change in log consumption in period  $t$  conditional to a high-growth state at date 0. Thus, conditional to  $\mu(t=0) = \mu_2$ ,  $(\tilde{y}_1, \tilde{y}_2, \dots)$  is an independent (decorrelated) process. It happens that  $\tilde{y}_t$  is distributed as  $(\mu_2, 1 - \pi_t; \mu_1, \pi_t) + \sigma\tilde{\varepsilon}$  where  $\pi_t$  is the probability of a odd number of Poisson events between 0 and  $t$ . The pricing formula in the high-growth state is then

$$\hat{r}_t = \delta - \frac{1}{t} \ln E \prod_{i=1}^t \tilde{y}_i^{-\gamma} = \delta - \frac{1}{2}\gamma^2\sigma^2 - \frac{1}{t} \sum_{i=1}^t \ln [(1 - \pi_i) e^{-\gamma\mu_2} + \pi_i e^{-\gamma\mu_1}].$$

An equivalent pricing formula is easily obtained for the low-growth state.

# CESifo Working Paper Series

(for full list see [www.cesifo.de](http://www.cesifo.de))

---

- 1313 Kurt Schmidheiny, Income Segregation and Local Progressive Taxation: Empirical Evidence from Switzerland, October 2004
- 1314 David S. Evans, Andrei Hagiu and Richard Schmalensee, A Survey of the Economic Role of Software Platforms in Computer-Based Industries, October 2004
- 1315 Frank Riedel and Elmar Wolfstetter, Immediate Demand Reduction in Simultaneous Ascending Bid Auctions, October 2004
- 1316 Patricia Crifo and Jean-Louis Rullière, Incentives and Anonymity Principle: Crowding Out Toward Users, October 2004
- 1317 Attila Ambrus and Rossella Argenziano, Network Markets and Consumers Coordination, October 2004
- 1318 Margarita Katsimi and Thomas Moutos, Monopoly, Inequality and Redistribution Via the Public Provision of Private Goods, October 2004
- 1319 Jens Josephson and Karl Wärneryd, Long-Run Selection and the Work Ethic, October 2004
- 1320 Jan K. Brueckner and Oleg Smirnov, Workings of the Melting Pot: Social Networks and the Evolution of Population Attributes, October 2004
- 1321 Thomas Fuchs and Ludger Wößmann, Computers and Student Learning: Bivariate and Multivariate Evidence on the Availability and Use of Computers at Home and at School, November 2004
- 1322 Alberto Bisin, Piero Gottardi and Adriano A. Rampini, Managerial Hedging and Portfolio Monitoring, November 2004
- 1323 Cecilia García-Peñalosa and Jean-François Wen, Redistribution and Occupational Choice in a Schumpeterian Growth Model, November 2004
- 1324 William Martin and Robert Rowthorn, Will Stability Last?, November 2004
- 1325 Jianpei Li and Elmar Wolfstetter, Partnership Dissolution, Complementarity, and Investment Incentives, November 2004
- 1326 Hans Fehr, Sabine Jokisch and Laurence J. Kotlikoff, Fertility, Mortality, and the Developed World's Demographic Transition, November 2004
- 1327 Adam Elbourne and Jakob de Haan, Asymmetric Monetary Transmission in EMU: The Robustness of VAR Conclusions and Cecchetti's Legal Family Theory, November 2004

- 1328 Karel-Jan Alsem, Steven Brakman, Lex Hoogduin and Gerard Kuper, The Impact of Newspapers on Consumer Confidence: Does Spin Bias Exist?, November 2004
- 1329 Chiona Balfoussia and Mike Wickens, Macroeconomic Sources of Risk in the Term Structure, November 2004
- 1330 Ludger Wößmann, The Effect Heterogeneity of Central Exams: Evidence from TIMSS, TIMSS-Repeat and PISA, November 2004
- 1331 M. Hashem Pesaran, Estimation and Inference in Large Heterogeneous Panels with a Multifactor Error Structure, November 2004
- 1332 Maarten C. W. Janssen, José Luis Moraga-González and Matthijs R. Wildenbeest, A Note on Costly Sequential Search and Oligopoly Pricing, November 2004
- 1333 Martin Peitz and Patrick Waelbroeck, An Economist's Guide to Digital Music, November 2004
- 1335 Lutz Hendricks, Why Does Educational Attainment Differ Across U.S. States?, November 2004
- 1336 Jay Pil Choi, Antitrust Analysis of Tying Arrangements, November 2004
- 1337 Rafael Lalive, Jan C. van Ours and Josef Zweimueller, How Changes in Financial Incentives Affect the Duration of Unemployment, November 2004
- 1338 Robert Woods, Fiscal Stabilisation and EMU, November 2004
- 1339 Rainald Borck and Matthias Wrede, Political Economy of Commuting Subsidies, November 2004
- 1340 Marcel Gérard, Combining Dutch Presumptive Capital Income Tax and US Qualified Intermediaries to Set Forth a New System of International Savings Taxation, November 2004
- 1341 Bruno S. Frey, Simon Luechinger and Alois Stutzer, Calculating Tragedy: Assessing the Costs of Terrorism, November 2004
- 1342 Johannes Becker and Clemens Fuest, A Backward Looking Measure of the Effective Marginal Tax Burden on Investment, November 2004
- 1343 Heikki Kauppi, Erkki Koskela and Rune Stenbacka, Equilibrium Unemployment and Capital Intensity Under Product and Labor Market Imperfections, November 2004
- 1344 Helge Berger and Till Müller, How Should Large and Small Countries Be Represented in a Currency Union?, November 2004
- 1345 Bruno Jullien, Two-Sided Markets and Electronic Intermediaries, November 2004
- 1346 Wolfgang Eggert and Martin Kolmar, Contests with Size Effects, December 2004

- 1347 Stefan Napel and Mika Widgrén, The Inter-Institutional Distribution of Power in EU Codecision, December 2004
- 1348 Yin-Wong Cheung and Ulf G. Erlandsson, Exchange Rates and Markov Switching Dynamics, December 2004
- 1349 Hartmut Egger and Peter Egger, Outsourcing and Trade in a Spatial World, December 2004
- 1350 Paul Belleflamme and Pierre M. Picard, Piracy and Competition, December 2004
- 1351 Jon Strand, Public-Good Valuation and Intrafamily Allocation, December 2004
- 1352 Michael Berlemann, Marcus Dittrich and Gunther Markwardt, The Value of Non-Binding Announcements in Public Goods Experiments: Some Theory and Experimental Evidence, December 2004
- 1353 Camille Cornand and Frank Heinemann, Optimal Degree of Public Information Dissemination, December 2004
- 1354 Matteo Governatori and Sylvester Eijffinger, Fiscal and Monetary Interaction: The Role of Asymmetries of the Stability and Growth Pact in EMU, December 2004
- 1355 Fred Ramb and Alfons J. Weichenrieder, Taxes and the Financial Structure of German Inward FDI, December 2004
- 1356 José Luis Moraga-González and Jean-Marie Viaene, Dumping in Developing and Transition Economies, December 2004
- 1357 Peter Friedrich, Anita Kaltschütz and Chang Woon Nam, Significance and Determination of Fees for Municipal Finance, December 2004
- 1358 M. Hashem Pesaran and Paolo Zaffaroni, Model Averaging and Value-at-Risk Based Evaluation of Large Multi Asset Volatility Models for Risk Management, December 2004
- 1359 Fwu-Ranq Chang, Optimal Growth and Impatience: A Phase Diagram Analysis, December 2004
- 1360 Elise S. Brezis and François Crouzet, The Role of Higher Education Institutions: Recruitment of Elites and Economic Growth, December 2004
- 1361 B. Gabriela Mundaca and Jon Strand, A Risk Allocation Approach to Optimal Exchange Rate Policy, December 2004
- 1362 Christa Hainz, Quality of Institutions, Credit Markets and Bankruptcy, December 2004
- 1363 Jerome L. Stein, Optimal Debt and Equilibrium Exchange Rates in a Stochastic Environment: an Overview, December 2004

- 1364 Frank Heinemann, Rosemarie Nagel and Peter Ockenfels, Measuring Strategic Uncertainty in Coordination Games, December 2004
- 1365 José Luis Moraga-González and Jean-Marie Viaene, Anti-Dumping, Intra-Industry Trade and Quality Reversals, December 2004
- 1366 Harry Grubert, Tax Credits, Source Rules, Trade and Electronic Commerce: Behavioral Margins and the Design of International Tax Systems, December 2004
- 1367 Hans-Werner Sinn, EU Enlargement, Migration and the New Constitution, December 2004
- 1368 Josef Falkinger, Noncooperative Support of Public Norm Enforcement in Large Societies, December 2004
- 1369 Panu Poutvaara, Public Education in an Integrated Europe: Studying to Migrate and Teaching to Stay?, December 2004
- 1370 András Simonovits, Designing Benefit Rules for Flexible Retirement with or without Redistribution, December 2004
- 1371 Antonis Adam, Macroeconomic Effects of Social Security Privatization in a Small Unionized Economy, December 2004
- 1372 Andrew Hughes Hallett, Post-Thatcher Fiscal Strategies in the U.K.: An Interpretation, December 2004
- 1373 Hendrik Hakenes and Martin Peitz, Umbrella Branding and the Provision of Quality, December 2004
- 1374 Sascha O. Becker, Karolina Ekholm, Robert Jäckle and Marc-Andreas Münder, Location Choice and Employment Decisions: A Comparison of German and Swedish Multinationals, January 2005
- 1375 Christian Gollier, The Consumption-Based Determinants of the Term Structure of Discount Rates, January 2005