

CLASH OF CAREER AND FAMILY: FERTILITY DECISIONS AFTER JOB DISPLACEMENT

EMILIA DEL BONO
ANDREA WEBER
RUDOLF WINTER-EBMER

CESIFO WORKING PAPER NO. 2180
CATEGORY 4: LABOUR MARKETS
JANUARY 2008

An electronic version of the paper may be downloaded

- *from the SSRN website:* www.SSRN.com
- *from the RePEc website:* www.RePEc.org
- *from the CESifo website:* www.CESifo-group.org/wp

CLASH OF CAREER AND FAMILY: FERTILITY DECISIONS AFTER JOB DISPLACEMENT

Abstract

In this paper we investigate how fertility decisions respond to unexpected career interruptions which occur as a consequence of job displacement. Using an event study approach we compare the birth rates of displaced women with those of women unaffected by job loss after establishing the pre-displacement comparability of these groups. Our results reveal that job displacement reduces average fertility by 5 to 10% in both the short and medium term (3 and 6 years) and that these effects are largely explained by the response of white collar women. Using an instrumental variable approach we provide evidence that the reduction in fertility is not due to the income loss generated by unemployment but arises because displaced workers undergo a career interruption. These results are interpreted in the light of a model in which the rate of human capital accumulation slows down after the birth of a child and all specific human capital is destroyed upon job loss.

JEL Code: J13, J64, J65, J24.

Keywords: fertility, unemployment, plant closings, human capital.

Emilia Del Bono
ISER
University of Essex
UK – Colchester CO4 3SQ
edelbono@essex.ac.uk

Andrea Weber
UC Berkeley, Department of Economics
549 Evans Hall #3880
USA – Berkeley, CA 94720-3880
webera@econ.berkeley.edu

Rudolf Winter-Ebmer
Johannes Kepler University of Linz
Department of Economics
Altenberger Str. 69
A – 4040 Linz-Auhof
Rudolf.WinterEbmer@jku.at

December 19, 2007

We are grateful to Jerome Adda, David Card, Ken Chay, Raj Chetty, John Ermisch, Stephen Jenkins and seminar participants at UC Berkeley, Bocconi Milan, ISER (University of Essex), ESPE 2007, EALE 2007, and ESSLE 2007 for helpful comments. Andrea Weber also acknowledges financial support which was generously provided by the Center for Labor Economics at UC Berkeley. All errors and opinions are the authors' sole responsibility.

1 Introduction

A prominent argument in explaining the shortfall of women in top academic positions in fields like economics is that these careers require a large amount of front-loaded work effort, which is almost incompatible with the demands of a family (Ginther and Kahn, 2004). When the tenure and the biological clocks tick on the same schedule women have to sacrifice either career or family, but cannot have it all. The situation of women in top positions may, however, only present the tip of the iceberg. Over the last century women's role in the labor market has gradually changed from secondary workers with a limited planning horizon to equivalent partners or independent decision makers with a life-time planning perspective (Goldin, 2006). This means careers or jobs that provide opportunities for promotion and advancement have become more desirable for women and labor market conditions that impede the establishment of stable careers early in their lives like unemployment, temporary jobs, or involuntary turnover, may be reasons for a delay or even a permanent reduction in fertility. The specific relationship between career and fertility has received little attention in the formal analysis of fertility decisions. Life-cycle models acknowledge the interaction of human capital investment and fertility timing and show that women have an incentive to postpone childbearing if the opportunity cost of human capital accumulation early in the life-cycle exceeds the value of children (Blackburn et al., 1993; Cigno and Ermisch, 1989; Moffitt, 1984). In these models human capital is typically seen as being entirely transferable and accumulation occurs at a constant rate so that transitory labor market shocks do not have a significant impact on fertility. If, however, we distinguish between accumulation of general and specific human capital it becomes apparent that certain stages of a woman's career might be particularly sensitive to an interruption. In such a model fertility can be affected by short-lived as well as persistent labor market shocks.

In this paper we set out to investigate the effect of job displacement on the probability of having a child in the following period. Job displacement may have temporary as well as long term consequences on an individual's economic circumstances. At a minimum, an exogenous job separation can be seen as a career interruption, in so far as it forces the individual to start anew with a different employer. Very often, however, job displacement causes significant reductions in future wages and earnings, so that its effects are felt in the long-term.¹

In order to distinguish the different channels through which job loss affects the demand for children we set up a simple dynamic model of fertility which takes into account that the process of human capital accumulation may be predominantly firm or career specific. Within this framework we can identify four key effects of job loss on fertility outcomes. The first two are the income effect, which results from the inability to smooth consumption over time, and the opportunity cost effect, which results from the lower value of time during a period of unemployment. These are the effects traditionally emphasized by static models of fertility and empirically analyzed by Butz and Ward (1979) for the U.S. and by Ahn and Mira (2002) across a sample of OECD countries. The third effect is due to the loss of future income that is incurred if a woman is unable to invest in human capital at crucial stages of her career.² This may be a relevant aspect to consider if we think, for example, that a woman with a young child is not able to keep up with the intensive training and sorting that occurs in the first few years on a new job. The final effect operates through the job finding rate, as pregnant women or women with small children might be less attractive to potential employers.

We present empirical evidence using data on firm closures identified in the Aus-

¹See Ruhm (1991), Jacobson et al. (1993), Stevens (1997) and Ichino et al. (2007) for empirical evidence on the economic effects of displacement.

²This is consistent with the existing empirical evidence showing that the timing of labor supply interruptions matters in order to explain future wages (Light and Ureta, 1995).

trian Social Security Database. The data contains several features which make it possible to empirically distinguish between the different effects identified in the theoretical model. First, Austria has a government-sponsored maternity leave system, which allows mothers to take time off work after giving birth and provides them with maternity benefits. This system applies equally to all women in our sample and grants the same amount of benefits independently of the mother's employment status or income. Second, the data covers all women in the labor market. This allows us to compare the displacement effects for different groups of women, and especially to contrast women in more and less career oriented occupations. Third, the amount of unemployment experienced after job displacement varies considerably in our sample. We exploit this variation to distinguish between the effects of displacement that come from a career interruption and those that work through unemployment.

In the empirical analysis we compare births to women affected by a firm closure and to a control group of non-displaced women. Our main analytical tool is an event study which we use to establish the pre-displacement comparability of both groups and to display the post-displacement effects. Threats to the causal interpretation of the displacement effects are differential survival probabilities across firms and self-selection of workers into different types of firms. The data provides a wide array of individual and firm characteristics which allow us to control for these potential selection problems. It turns out that the groups are remarkably similar before displacement and therefore selection issues do not play a major role.

Our empirical analysis leads to three main findings. First, our results reveal that job displacement reduces the number of children born by 5 to 10% in the short and medium term (after 3 and 6 years, respectively). This suggests that negative effects of displacement clearly outweigh any opportunity cost effects. Second, by disaggregating the effects according to individual characteristics we can show that the reduction in fertility is largely due to the behavior of women

in white collar occupations and higher earnings groups. This means that those who suffer lower fertility as a consequence of a firm closure are women who are more likely to invest in career or firm specific human capital and hence to suffer from an involuntary separation. Third, we find that unemployment has no extra effect on fertility on top of the effect due to job loss. To establish this result we estimate a model that controls for displacement and unemployment separately and disentangle the two effects using variation in individual unemployment by industry, region, and year.

The paper is organized as follows. In section 2 we present the theoretical model and derive the key effects of displacement on fertility. Section 3 explains the main features of the institutional setting in Austria. Section 4 describes the data and the definition of job displacement. We discuss the features of our quasi-experimental setting and issues of selection in section 5. Section 6 presents the main results, first showing the direct effects of job displacement on fertility and then addressing the mechanisms which generate the observed relationships. We then offer an interpretation of the empirical findings in the light of the theoretical model. The last section concludes.

2 Theory

It is widely recognized that female labor supply and fertility should be seen as joint decisions, either because they are determined by the same economic variables (Mincer, 1963) or because preferences over children and work are strongly correlated (Tien, 1967). The earliest theoretical contributions date back to the work of Liebenstein (1957) and Becker (1960, 1965), who extend the neoclassical theory of consumer demand to model the household's demand for children. Their settings are static and assume that the fertility decisions are taken at one point in time. More realistic models incorporate the long term nature of the fertility process in a dynamic framework so that features like

birth timing, investment in human capital, capital market imperfections, or the stochastic nature of human reproduction can be incorporated.³

A standard assumption in all life-cycle fertility models to date, however, is that human capital is entirely general, which means transferable across jobs and simply accumulated with time spent in the labor market. The birth of a child affects the human capital accumulation process by either depreciating the existing stock of human capital or reducing the rate at which human capital grows in the future. Labor market shocks like a job loss do not have a major impact on fertility if they are transitory and have small effects on lifetime income.

In considering the fertility response to job displacement we depart from this framework and introduce a second type of human capital, which is firm or career specific. The idea is that specific human capital is destroyed at the time of job loss and this creates a mechanism such that even transitory labor market shocks can affect fertility. Our model focuses on a woman's job search and fertility decisions after job loss. The job search aspect is relevant to our problem since one of the objectives of a displaced individual is finding a new job. Our framework extends the main setup of a dynamic job search model with endogenous savings (Card et al., 2007; Lentz and Tranaes, 2005) by allowing fertility to be another choice variable.

Within a discrete time setting we assume that the woman can influence the probability of birth p_t in period t via the choice of contraception. She derives utility from consumption and the number of children, and disutility from practicing contraception. It is assumed that the utility function is separable over time and in all arguments so that per period utility is given by $u(c_t) + v(k_t) - \psi(p_t)$, where c_t and k_t are consumption and the number of children, u and v are monotonically increasing and concave, while ψ is monotonically decreasing and convex. Income in each period depends on the employment and maternity

³For an excellent survey of the theoretical fertility literature see Hotz et al. (1997)

status. An unemployed woman receives a UI benefit level b , on a job she earns a wage w , and after giving birth the woman spends a period on maternity leave earning maternity benefit m . We assume that $m < b < w$. Decisions are taken in three steps. Each period the woman first learns about her employment status, then she makes a contraception choice, and after the fertility outcome is realized, she decides how much of her income to consume or save. We focus here on a discussion of the main predictions from the model while a full description can be found in Appendix A.

In order to examine the different channels through which a job loss can affect fertility decisions we first focus on the effects of lower income and reduced opportunity cost of taking a maternity break resulting from a period of unemployment. In Appendix A we show that the response of the optimal fertility choice p_t^* to a change in the asset level A_t is given by

$$\partial p_t^* / \partial A_t = \{u'(c_t^1) - u'(c_t^0)\} / \psi''(p_t^*) \geq 0, \quad (1)$$

and thus it is proportional to the difference in marginal utilities from consumption in the maternity leave state c_t^1 and working or unemployment state c_t^0 . If the woman faces borrowing constraints and is unable to fully smooth consumption across maternity states, then $u'(c_t^1) - u'(c_t^0) > 0$, which implies that an additional unit of wealth increases fertility. We call this the *income effect*.

Further we show that the effect of an increase in w on the optimal fertility choice is given by

$$\partial p_t^* / \partial w = -u'(c_t^0) / \psi''(p_t^*) \leq 0, \quad (2)$$

which is negatively proportional to the marginal utility of consumption, because a higher wage decreases the marginal return to having a child to the extent that it raises the value of being employed. This is the *substitution effect*.

To examine the other channels through which job loss affects fertility timing we need to specify how wages evolve over time and how a birth affects the mother's

employment and income status. We assume that human capital is entirely accumulated on the job, so that wages grow with job tenure T following a concave profile $w = w(T)$. Displacement destroys all job specific human capital and a woman re-entering a new job starts with wage $w(0)$. We assume further that the birth of a child has two effects on the labor market situation of the mother: it lowers her job finding rate, and it reduces the rate at which human capital is accumulated in the future. These are the two crucial assumptions which allow us to show that (i) optimal fertility decisions are different for employed and unemployed women, and that (ii) the birth of a child has a different impact on future earnings at different stages in a woman's career because of the concavity of the wage tenure profile and the reduced human capital accumulation rate after motherhood.⁴

The growth of female wages after motherhood has been studied extensively in the literature and there is evidence that due to reduced working hours, job effort, or lower probabilities of promotions women face a slowdown in their wage growth after having children (Miller, 2007), and this may even be more pronounced for high skilled women (Ellwood et al., 2004). As recent evidence shows, women who are pregnant or have a small child might face more difficulties in finding a new job if employers expect young mothers to have higher rates of absences and a lower job commitment than other women (Cunningham and Macan, 2007).

The responses of fertility choice to job displacement in our the model are sketched in Figure 1, which shows wage tenure profiles for various alternatives. In the upper panel we see the profile for a non-displaced woman, whose earnings evolve according to a concave schedule. If this woman decides to have a child in period t her earnings drop to the maternity benefit level m during the period on maternity leave. In the next period she returns to her former job and

⁴Increased opportunities to control the timing of motherhood (e.g. through the availability of oral contraceptives) have been shown to play an important role in human capital and labor supply decisions (Bailey, 2006; Goldin and Katz, 2002).

earns the same amount she was earning before, i.e. there is no depreciation. Her future wage profile, however, is characterized by a slower accumulation of human capital. As we can see, the cost of a child consists of two components: the earnings loss during maternity leave and the earnings loss due to lower human capital accumulation in the future. Shifting the birth of the child to later periods increases the former but reduces the latter, while the concavity of the wage profile implies that small changes in birth timing have a larger impact at low than at high tenure levels.

The bottom panel shows the earnings profile for a woman who is displaced from her job in period $t - 1$. The job loss may lead to a spell of unemployment during which she receives UI benefits b . When she enters a new job all her specific human capital is lost so that she starts again at a wage level $w(0)$ and in absence of a child her wages evolve according to the original profile. To see the full effects of job displacement on fertility decision we consider the situation of a woman, who instead of re-entering employment in period t decides to have a child. This means her earnings drop to the maternity benefit level m during maternity leave. Since this woman finds it more difficult to get a new job, she may experience a further period of unemployment. The combination of the delay in job entry and the lower wage growth, which is particularly important while she is still on the steep part of the wage profile, result in a large long term earnings loss. This comparison makes clear that displaced women face an incentive to adjust their birth timing decision so that they (1) try to find a new job before having a child, which is what we call the *employability effect*, and (2) delay childbirth until they reach the flatter part of the wage profile, which is what we call the *career effect*.

In the remainder of the paper we investigate the empirical relevance of each of the four effects on fertility decisions after job displacement.

3 Family Policy in Austria

Austria has an extensive system of family policies and transfers which is rather generous compared to what available in other European countries (Lalive and Zweimüller, 2005). The major components of the system, the maternity protection and parental leave policies, are targeted at parents with young children. Other forms of support, such as child benefits, extend over the long-term.⁵ Over the last 20 years the system has undergone several reforms, most of them with the aim to increase coverage in the population and to boost fertility.

One of the building blocks of the system is represented by *maternity protection*, which is aimed at protecting the health of the mother and the child during the period around the birth. This period extends over 16 weeks, usually divided into eight weeks before and eight weeks after the expected date of birth. During this period mothers are not allowed to work but are insured against dismissal.⁶ While on maternity protection, women receive a compensation in the form of sick leave payments which are equivalent to their previous monthly wage. Unemployed women get an 80% increase of their regular unemployment benefits. *Parental leave* sets in after the maternity protection period ends. The system was introduced in 1957 in order to enable mothers to stay at home with their young children while still having the opportunity to return to their previous job (later on this right was extended to fathers). Under the system in operation in the 1990s the mother or father can choose to go on parental leave until the child's second birthday. During this period the parent is protected from dismissal from her former job and is not allowed to work in any other job.⁷ If the parent returns to her former job after parental leave expires she continues

⁵The interactions of Austrian family policies and active labor market policies are investigated by Lechner and Wiehler (2007).

⁶Employed women are protected from dismissal when they first announce their pregnancy to the employer.

⁷The formal requirement is that while on parental leave the parent must not earn an amount above the marginal threshold (about 20% of the median gross earnings).

to be protected from dismissal for one more month.⁸

During the parental leave period the parent receives a flat rate benefit of 408 Euros per month (in 1997). Eligibility for the parental leave benefit is closely linked to eligibility for unemployment insurance benefits. To establish a first-time claim the mother must have worked for 52 weeks out of the last 2 years. For mothers younger than 25 the requirement is reduced to 26 weeks during the last year. Unemployment extends the 2 year time frame by up to 3 years. This means that a woman who worked for 12 months and then becomes unemployed has established eligibility for parental leave benefits for up to 4 years if she continuously stays on the unemployment register. After the first parental leave period the requirements to re-establish eligibility are lower.

The maximum duration of parental leave was subject to some changes over the 1990s. Before July 1990, parental leave ended with the first birthday of the child, but afterwards it was extended to the second birthday. As of July 1996 parental leave was reduced, ending 18 month after the birth of the child unless the second parent took at least 6 months of leave. In this case the parental leave still ended with the second birthday. From 2002 onwards the system was reformed completely, coverage was extended to all mothers, not only those eligible for UI benefits, benefits were increased, the maximum duration was extended to the third birthday of the child in case the second parent takes at least 6 months (dismissal protection still only applies up to the second birthday), and the threshold for income earned while on parental leave was increased.

Child benefits are almost universal in Austria. This means that all parents with a sufficiently long period of residence in Austria can claim these benefits irrespective of their income. The period of eligibility extends to a child's 18th birthday, and can be as long as a child's 26th birthday if the child is in full-time education. The amount received varies with the age of the child, but it

⁸For parents who are notified of a dismissal after the protected period the regular periods of notice apply: two weeks for blue collar workers and up to three months for white collar workers.

was about 100 Euros per month in the mid 1990s. Take up of child benefits is extremely high.

4 Data

We analyze the effect of job loss on fertility decisions using data from the Austrian Social Security Database (ASSD) which covers all workers except civil servants and the self-employed between 1972 and 2002. The dataset includes daily information on employment and registered unemployment status, total annual earnings paid by each employer, and various characteristics of the workers and their jobs. The data also contains entries of births, mainly linked to maternity protection and parental leave spells.

Since eligibility for maternity protection and parental leave is based on previous employment, a measure of fertility derived from the ASSD might under-report births to women who do not have a strong attachment to the labor market or leave the labor force after having a child. For this reason we merge the ASSD with child benefit records, which contain all births from 1975 to 2005, to derive a measure of fertility for every woman in the ASSD.⁹ Our data can therefore be described as a linked administrative records database.

The sample used in our analysis includes firms that were active, i.e. had at least one employed worker on the payroll, on any of four specific dates (February 10, May 10, August 10, and November 10) during the years between 1990 and 1998. Firms can be identified through an employer identifier that is reported with every employment spell.¹⁰ The time at which a firm enters the data is defined by the first quarter in which we observe the firm identifier. Since we have the universe of workers and can track firms back to 1972, we can derive a pretty accurate measure of the age of the firm. Firm closure dates are defined

⁹See Appendix B for more details on this.

¹⁰Note that we use the term firm in a loose sense here, as the data does not allow us to distinguish between plants or establishments and firms.

as the last quarter in which a firm has at least one worker on the payroll.

We apply three selection criteria to arrive at the sample of firms considered in our analysis. First, we exclude firms in which more than 50% of the workforce move to the same new employer, in order to control for reassignments of firm identifiers or mergers. Second, we exclude firms operating in the agriculture, construction, and tourism industries. These firms are characterized by a high share of seasonal employment and this makes it difficult to identify firm entries and exits. Third, we consider only firms that have 5 or more employees at least once during the period 1972-2002, and take only firms with more than 3 employees but less than 200 employees in the last quarter before closure. The rationale behind this is that it is difficult to identify firm closures for very small firms and the event is extremely rare among larger firms.¹¹

For the resulting sample of firms we consider all women employed between quarter 1/1990 and quarter 4/1998.¹² We restrict the sample to young women between 18 and 35 years and with at least one year of tenure in the current firm. The tenure requirement is important as it ensures that all women are eligible for parental leave benefits and reduces to some extent the degree of heterogeneity in our sample.

We then split the sample of women as follows. First, we define as *displaced* women all women working in a closing firm the quarter before closure. Second, we look at all women who work in closing firms one year before closure (i.e. in the fourth quarter before the closing date). We use this group of women *employed one year before closure* to check for changes in the composition of the workforce of closing firms over the last year. Third, we define as *control* all women who are not affected by firm closure, i.e. whose firms do not close within the next two years.

¹¹In the data there are only 31 firms with more than 200 employees going out of business between 1990 and 1998 in industries other than tourism and construction.

¹²Employed means holding either a blue collar or white collar contract. We do not consider apprentices as being employed.

The control group is large, as it includes observations on every woman working in a non-closing firm in any quarter between 1990 and 1998 and hence multiple observations on most women. To reduce the computational burden, we take a 5% random sub-sample of the women in this group. The final sample therefore consists of 8,401 observations of women in the *displaced* group, 9,945 observations of women in the *employed one year before closure* group, and 212,738 observations of women in the *control* group. Note that the distinction between these groups is based on whether a woman holds a job in a closing or non-closing firm at a certain quarter. We will refer to this quarter as the reference date.¹³ By construction, the sample may include multiple observations for the same individual.¹⁴

Firm characteristics

Table 1 compares the characteristics of closing and non-closing firms in the sample. In total we observe 3,050 closing firms and 41,240 non-closing firms. Closing firms are smaller, on average about two thirds the size of surviving firms. They reduce their workforce by 10% in the year before the reference date, and although they grow over the previous 3 years, they expand less than surviving firms do. Further, closing firms are characterized by a higher share of employment turnover, measured by the sum of new hires and layoffs over total employment, in the final quarter and also in the years before. Earnings in closing firms are only slightly lower than those in surviving firms. Younger firms are more likely to close down and we observe a relatively high share of firm closures in the sales sector and in the last quarter of each year.

Figure 2 shows the development of average firm size in the last five years before the reference date in more detail. Five years before the reference date both closing and surviving firms exhibit the same size, about 22 employees on average.

¹³The condition of a minimum firm size of 4 employees at the reference date applies to all firms in the sample. Including smaller firms in the sample leads to large variation in some variables and especially to an over-representation of pregnant women in the closure sample. This is because, as we saw in section 3, pregnant women are protected from dismissal.

¹⁴For about 32% of individuals we have more than one observation in the final sample.

Afterwards, closing firms show a sharp reduction in average firm size. But this downward trend in firm size may be misleading. Some of the closing firms (in general small ones) were not in existence 5 years earlier, so that the trend shown in the figure is determined to a large extent by the entry of smaller firms into the sample. All firms in our sample have been in the data for at least one year, so the development over the last four quarters is not affected by compositional effects and resembles growth of individual firms. The graph indicates some downsizing preceding firm closure which may result in a non-random selection of workers who remain employed until the closure date.

Individual characteristics

Table 2 compares the characteristics of women in the displaced group and in the control group: see columns (1) and (3). Displaced and control women are remarkably similar in age, nationality, labor market experience, and the number of previous children. The differences between women affected by firm closure and those who are not seem to be mainly related to differences in firm characteristics. We observe a higher share of workers holding an apprenticeship and a lower share of blue collar workers among displaced women, which probably reflects the industry composition of closing firms. In addition, we find that displaced women have on average 10% less tenure with their current firm, reflecting lower firm-age and higher turnover rates of closing firms.

Column 2 in Table 2 summarizes the characteristics of women employed one year before closure. The samples in columns (1) and (2) overlap only by 45%, because some women employed in closing firms leave before the closure date and because we apply the same age and tenure restrictions to all three groups of women. Also observations in the group of women employed one year before closure are based on a slightly different firm sample, which includes all firms closing down after the reference date but does not exclude firms with no women employed at that point in time and those with less than three employees. Comparing

columns (1) and (2) it seems that downsizing has no effect on the composition of the female workforce in closing firms. The main difference is that women leaving early are more likely to be blue collar workers.

Our outcome of interest is measured by the number of births per woman after the reference date. In the full sample we distinguish women who are pregnant at the reference date, that is who give birth within 6 months of the reference date. The main analysis will be conducted using a measure of fertility that excludes births to pregnant women because these fertility decisions have already been taken before firm closure. Since job displacement might affect the total number of children as well as the timing of fertility, we consider a short-term and a medium-term measure of fertility and look at the birth rate 3 and 6 years following the reference date. As we can see in the bottom rows of Table 2, the sample means indicate a lower birth rate in the displaced group than in the control group. In particular, birth rates for the displaced group are 7.9% lower after 3 years and 9.4% lower after 6 years. This suggests a lasting negative effect of displacement on fertility.¹⁵

5 Firm Closures as a Quasi-Experiment

Our method to analyse the effect of job displacement on fertility consists in comparing fertility outcomes after the reference date (which is the quarter of closure for the group of displaced women) for women in the displaced and control groups. In an experimental setting with random assignment, one could simply draw a comparison between the average number of births to displaced and control women in order to estimate the average effect of displacement due to firm closure on fertility. Firm closures, however, do not happen randomly and are typically preceded by a period in which the distressed firm downsizes

¹⁵As we only observe births up to 6 years after the reference date, we cannot draw any firm conclusion about completed fertility from our results. However, the 6-year interval should be long enough to show evidence of catching up effects if these were to occur.

rapidly. Therefore we potentially face issues of selection at two different levels. First, we have already seen from Table 1 that closing firms differ from surviving firms in several ways. Typically, closing firms are smaller and younger than surviving firms, they have a higher turnover of workers, and they are more concentrated in the sales sector and in the Vienna region. So, women employed in closing firms may significantly differ from women employed in surviving firms if there is non-random selection of workers into firms with different propensity to close down in the future. Secondly, because of the downsizing and restructuring that we see in most firms in the last year before firm closure a non-randomly selected pool of workers may be what is left at the closing date (see Figure 2). In the literature there is a debate on whether the downsizing process leads employers to retain the most productive workers, whether it is the workers with the lowest unobserved ability to stay until the end because they have less outside options, or whether both effects cancel out each other. Some studies have tried to model the selection process theoretically and empirically, although the various possible sources of bias are difficult to disentangle (Lengermann and Vilhuber, 2002; Pfann and Hamermesh, 2001). Others have taken the view that workers who leave the closing firm during its downsizing period are all doing so involuntarily and have included them in the displaced group (Dustmann and Meghir, 2005; Eliason and Storrie, 2006).

Here we take a different stance, which is also motivated by the specific features of our empirical setting. We observe that the labor market careers of young women are rather unstable and characterized by frequent interruptions which are often due to maternity breaks. This means that if we were to include in our *displaced* group women leaving closing firms during the downsizing period we would see a higher number of births for these women.¹⁶ Hence, it seems

¹⁶The main assumption rationalizing the inclusion of “early leavers” in the sample of workers affected by the firm closure is that they all leave the firm involuntarily i.e. because of a layoff the timing of which they are not able to influence. However, if workers are allowed to choose the time of departure from the firm the separation should not be considered exogenous, even

preferable in this case to consider as displaced only those women who were still employed in the closing firm at quarter 0, i.e. the quarter before the firm's disappearance. To gauge the effect of the selection which occurs during the downsizing period we compare displaced women with all women who were employed in the closing firms one year before the firm closure (i.e. 4 quarters before the one preceding closure), which is before the downsizing started. As it will become clearer below, we are able to demonstrate that these two groups do not differ significantly in terms of their past labor market and fertility outcomes and we take this as evidence that the downsizing does not affect the composition of our group of young women.

To deal with the selection of women into more or less "risky" firms in terms of their likelihood to close down, we compare past labor market and fertility outcomes of women in the displaced and control group. We correct remaining differences between these two groups by a propensity score weighting procedure, which balances the distribution of observable characteristics in both samples. The method is described in the next section in more detail.

Our main analytical tool is a graphical analysis based on an event study. This means that we pool all observations at the reference date and plot the means of the variables of interest per each quarter before and after the reference date and separately for the displaced and comparison groups. This provides many insights into the labor market and fertility dynamics of our sample of young women, which is characterized by many spells in and out of employment.

The graphical analysis turns out to be particularly useful for two reasons. First, comparison of outcomes before the reference date establishes the a priori comparability of different groups. Second, the comparison of outcomes after the reference date gives us an idea of the magnitude and the dynamics of the displacement effect. The variables we compare are days employed per quarter, days unemployed per quarter, earnings, and the number of births. To see how much if it would have not occurred in the absence of the firm closure.

sample selection issues affect differences in future outcomes we also apply the above mentioned propensity score weighting. The magnitude and significance of the fertility effect are then estimated by means of a linear regression.

5.1 Propensity Score Weighting

Define the treatment variable C_i as equal to one for a firm closure, equal to zero otherwise, and the potential outcomes for each treatment status by (Y_{0i}, Y_{1i}) . The observed outcome is given by $Y_i = (1 - C_i) * Y_{0i} + C_i * Y_{1i}$. Because we want to know the effect of job displacement on the probability of having a child for the average woman in the population, the estimand of interest is the average treatment effect $ATE = E(Y_{1i} - Y_{0i})$, where E is the expectation operator. Motivated by the availability of rich longitudinal information on both firms and individual labor market careers we make the assumption that job displacement from firm closure is randomly assigned conditional on a set of observable variables X , or $(Y_{0i}, Y_{1i}) \perp C_i | X$. Under this assumption, the average effect of displacement on fertility is non-parametrically identified (Rosenbaum and Rubin, 1984).

To estimate the ATE we use a propensity score weighting estimator suggested by Imbens (2004). The idea of this estimator is to predict the probability that an individual is displaced conditional on the observable characteristics X , and then use this probability to construct weights that equalize the distribution of X in the displaced group and the distribution of X in the control group to the distribution in the overall population.

More formally, we estimate a parsimonious logit model to predict the probability \hat{p}_i of a firm closure event $C_i = 1$ for each observation $i = 1, \dots, N$

$$\hat{p}_i = Pr[C_i = 1 | X_i]. \tag{3}$$

We then weight every observation in the displaced group by $1/\hat{p}_i$, and every

observation in the control group by $1/(1-\hat{p}_i)$. Further we normalize the weights to sum up to 1 in each group. The average treatment effect on the outcome Y_i is then given by the difference between the weighted average outcome in the displaced group and the weighted average outcome in the control group

$$ATE_{weight} = \frac{\sum_{i=1}^N \frac{C_i Y_i}{\hat{p}_i}}{\sum_{i=1}^N \frac{C_i}{\hat{p}_i}} - \frac{\sum_{i=1}^N \frac{(1-C_i) Y_i}{1-\hat{p}_i}}{\sum_{i=1}^N \frac{1-C_i}{1-\hat{p}_i}}. \quad (4)$$

This estimator can be rewritten in terms of the following regression function

$$Y_i = \alpha + \tau C_i + u_i, \quad (5)$$

which can be estimated by weighted least squares using the weights described above. In this equation the parameter τ corresponds to the average treatment effect. We can also add covariates to the regression function and improve the precision of the estimated parameters

$$Y_i = \alpha + \tau C_i + Z_i \beta + u_i. \quad (6)$$

A comparison of the point estimates of τ across specifications (5) and (6) provides an additional check for the balancing property of the propensity score.

Estimation of the propensity score

Our data provides a large amount of longitudinal information both at the firm level and at the individual level. We could therefore experiment with different propensity score specifications. We start by estimating the propensity of firm closure using firm level information exclusively. The idea is that firm closure is due to firm-level events and not based on actions at the individual level.

In order to do so, we estimate the probability that a firm with given firm characteristics will close down one year ahead. We use a one year time difference to take into account the downsizing and restructuring process which affects the closing firms in the last period. The independent variables are: industry and

region dummies, firm age, median monthly wage in each of the last 3 years, firm size, yearly employment growth, yearly employment turnover, median earnings growth, share of blue collar workers and of women in the workforce, year and season dummies, as well as various interactions between these variables.

Second, we estimate a propensity score based purely on individual characteristics. Here we predict the probability that a worker with given characteristics is affected by a firm closure. The independent variables are: age and age squared, age at entry in the labor market, whether of Austrian nationality, blue collar worker dummy, apprenticeship, tenure in the current job, labor market experience, number of children aged 0-3, 3-6, 6-9, 9-12 in each of the last 4 years, earnings, percentage of the period employed, percentage of the period unemployed, number of job changes, season and year dummies, as well as various interactions between these variables.

Finally, we estimate two additional propensity scores based on both worker and firm characteristics. In one version we use a more parsimonious set of firm characteristics, including only region and industry dummies, firm age, firm size, and industry interactions. In the other version we consider the full set of firm and individual characteristics.

6 Results

6.1 The Effect of Downsizing on the Composition of the Female Workforce

We start by comparing past labor market outcomes and fertility outcomes of displaced women and women who worked in closing firms one year before the closure, i.e. the samples in columns (1) and (2) of Table 2. Figure 3 shows the development of average quarterly employment, unemployment, and earnings over the last 5 years before the reference date. Panel (d) shows the yearly

number of births in the 14 years before the quarter of reference. None of these graphs shows any systematic difference between the two groups of women in this period. This confirms what we could see in Table 2.

This is an important indication that the downsizing which occurs in closing firms during their last year of existence does not affect the composition of the young female workforce. This does not mean that there are no compositional shifts in the overall workforce of closing firms during the last period, as shown by Schwerdt (2006), but simply that compositional issues do not seem to affect our sample of young women. When looking at the effects of firm closure on fertility we therefore consider only women directly displaced by firm closure, i.e. those employed in the closing firm up to the quarter preceding closure.

6.2 Effect of Job Loss on Employment and Earnings

Now we analyze the dynamics of employment and earnings. Figures 4 and 5 show unweighted comparisons between displaced and control groups for employment and unemployment from 20 quarters before to 12 quarters after the reference date. Due to the fact that we impose a one-year tenure requirement, employment and unemployment show a mirror image; up to one year before the reference date employment rises slowly, then stays at the maximum for one year before falling again. Displaced workers face a substantial employment loss in the first quarters after firm closure and cannot fully close the gap even after 3 years.¹⁷ Note that pre-displacement employment is slightly lower and unemployment is slightly higher for the displaced group, which indicates that firm closure does not hit workers completely at random.

Monthly earnings in Figure 6 resemble the pattern of days in employment, which basically means that earnings for those who are employed do not differ much for displaced and non-displaced women (see Figure 7). For this group of relatively

¹⁷See Ichino et al. (2007) for a comprehensive study of employment and earnings costs for (older) workers hit by a firm closure in Austria.

young women we therefore see only minor wage effects after displacement. Put it differently, expected monthly earnings mainly differ because of the loss of employment opportunities.

Figures 8, 9, and 10 apply the propensity score weighting approach to balance observable characteristics across displaced and control women. As one can see in the upper-left panels (a) in all three figures, controlling for firm characteristics does not eliminate all the differences. The event of firm closure is not only related to the type of firm, differences in the composition of the workforce are also important. Weighting by individual characteristics equalizes pre-displacement patterns of employment, unemployment and monthly earnings between displaced and control groups. All three versions of the weighting procedure that use individual characteristics come to the same conclusions. Interestingly, our propensity score weighting is very successful in matching labor market outcomes in each of the past 20 quarters, which corresponds to an equalization of the full labor market career for many of the younger women in the sample. The patterns of post-displacement outcomes are essentially unchanged by the weighting scheme. Next we turn to analyze the probability of having a birth, our outcome measure.

6.3 Effect of Job Loss on Fertility

Figure 11 plots the average yearly numbers of births in the 14 years before the reference date and up to 10 years thereafter.¹⁸ The mean number of births per year is age adjusted, i.e. it is based on the residuals of a regression of the number of births on age of the mother and its square. The graph shows that the average number of births per woman decreases rapidly up to the reference date, when it becomes zero, and then shoots up dramatically. This pattern is a consequence of the fact that we select only women with at least one year of

¹⁸Note that we only have complete information on births over 6 years after the reference date. This means that the last 4 points in figure 11 are not based on the full sample.

tenure at the reference date. This means that all women in our sample must have been working the year before closure and therefore they have no children between year -1 and year 0 by construction. As these women are also more likely to have been in employment two years before the reference date, three years before the reference date and so on, we observe a decreasing birth rate in the years preceding closure. The observed jump in the probability of a birth after the reference date is also a consequence of our tenure requirement. Conditional on not having had a birth in the last year, these women are very likely to have a child in the following period. What is important to notice, however, is the difference in the average number of births between the displaced and control groups after the reference date. While we observe no significant difference in fertility behavior prior to the quarter of closure, displaced women clearly and consistently exhibit lower birth rates from year 2 onwards.

To see how differences in the sample composition affect the birth outcomes we plot weighted graphs in Figure 13. The different weights neither change the comparability of the two groups before firm closure nor do they change the difference in the fertility response. As compared to employment and earnings dynamics, the differences in fertility between these groups according to firm and individual characteristics are even less marked.

Figure 12 shows in more detail the quarterly dynamics in the average number of births after the reference date. We see that the birth rates of displaced and control women start diverging after the third quarter. Since it takes nine months from conception to birth, we interpret this as evidence that women do not have enough information to foresee the exact timing of their job loss.

In the regression analysis we therefore restrict the sample to women who do not give birth within 6 months of the reference date, i.e. those who were not pregnant when the firm closed down. As explained in the data section, we measure fertility outcomes using the number of births in the first 3 and 6 years

after the reference date to compare short versus medium term birth outcomes. Results from regressing the birth outcome variables on a firm closure dummy, equation (5), are shown in Table 3. As with our graphical analysis, we present unweighted results along with results weighted with our four propensity score estimates. In the lower panel of Table 3 we show results obtained when we include standard human capital covariates as additional controls using equation (5). This can be seen as a further test for the experimental design, which implies that effects should be invariant to the presence of additional control variables. To correct the standard errors in the weighted regressions we use a bootstrapping procedure.

The results are robust and consistent across specifications. The number of births in the next 3 years after firm closure drops by 0.010 to 0.020. This corresponds to a drop in fertility of 5 to 10% in the short run. In the medium run, the magnitude of the drop is in the same ballpark, amounting to 0.021 to 0.040, which is to say a reduction in fertility between 4.9 to 9.3%.¹⁹ Although the point estimates are remarkably similar across specifications we see that simulated standard errors are larger in the specifications using firm variable based weights. This confirms our observation that the firm type may be a poor proxy for the individual risk to lose a job.

If we were to interpret these findings in terms of income vs. substitution effects, we would think that the income loss due to job displacement largely dominates any opportunity-cost considerations. However, we saw in section 2 that a negative response of fertility could arise also because of the *career* effect or because of job search. Next we investigate if the effect of an unexpected job loss is the same across different demographic groups. Differential patterns

¹⁹To give some idea of the magnitude, we compare these findings with those of Lalive and Zweimüller (2005). They find that the extension of the maximum duration of parental leave from the child's first to the child's second birthday which took place in Austria in 1990 resulted in a 4.9% increase in birth rates of second children after three years and a 3.9% increase after 10 years. So the effects we find are at least as large, and in some cases twice the size, as the effect of a 12 months increase in parental leave.

across women with different characteristics may help to disentangle competing theoretical explanations for the drop in fertility. So, in Table 4 we differentiate between women with and without previous children, compare blue and white collar workers, two age groups, and three experience and earnings groups. Due to space constraints we only present results from the unweighted regressions.

All the results point out a consistent pattern. Women without previous children are those who experience a drop in fertility, whereas women with previous children remain unaffected. This is possibly a consequence of the fact that women with previous children have most likely already realized their fertility plans. Age does not seem to matter much, as we see that both women older and younger than 25 reduce their fertility. Instead there is a clear difference according to the occupational position. Women in white collar occupations and those with higher pre-displacement earnings observe a significant and large reduction in the probability of having a child, while women in the lowest third of the earnings distribution and those in blue collar jobs do not show any change. White-collar jobs offer higher job protection and opportunities for career advancement, and thus higher expected returns for specific training. This suggests that women for whom career concerns and the destruction of firm specific human capital matter most show the largest response to a job loss. We also find that women with medium experience levels are affected much more than those with either very little or very much experience. This is also very interesting, as it hints at a big effect of displacement for women who are at an important stage of their career.

6.4 Firm Closure Effect versus Unemployment Effect

So far we have looked at the overall effect of an unexpected job loss on the fertility behavior of young women. This is not to be mistaken with the effect of unemployment on fertility. On the one hand, a large share of women affected

by a firm closure do not experience any unemployment; only 36% of our sample are unemployed for at least one day in the first year after firm closure (which is still considerably higher than the 7% of the control group). On the other hand, as pointed out in the theoretical model, the very fact that a firm closure occurs might have an impact on fertility over and above its effect through unemployment. This direct effect is what we call the *career* effect and is merely caused by the destruction of specific human capital and the need to start a new career somewhere else. Making use of the variation in individual unemployment experience we can try to disentangle the potential effects of a career interruption from the effects operating through unemployment.

There are, however, serious doubts about whether individual unemployment can be considered exogenous with respect to fertility. As there might be unobservable effects determining unemployment and fertility at the same time, an instrumentation strategy seems appropriate. In our sample we observe considerable variation in unemployment after firm closure by industry, region, season, and calendar year. Since there is no reason to assume that the direct impact of starting a new job on fertility would be different along these dimensions we use firm closure interacted with industry, region, season and year dummies as instruments for unemployment. We estimate the following model

$$Y_i = \alpha + \tau C_i + \gamma U_i + Z_i \beta + v_i \quad (7)$$

where C_i is an indicator for firm closure and U_i is a measure of unemployment. In our analysis we use three different variables to measure unemployment: the percentage of time the individual is unemployed during the first year after the reference date,²⁰ an indicator variable equal to one if there is positive unemployment in the first year after the reference date, and an indicator variable equal to one if employment is less than 75% in the first year after the reference

²⁰For displaced women the unemployment rate in the first year is 13%, compared to 2% for the controls; among those experiencing at least one day of unemployment the rate is 35% (23% for controls).

date.²¹

Table 5 shows the results from the IV estimations, with models 1 to 3 representing the three different measures of unemployment.²² A remarkable pattern emerges; whatever measure we use, unemployment never has a negative effect on fertility. On the contrary, in the upper panel all the point estimates are even positive although not significantly different from zero. On the other hand, the direct impact of firm closure on fertility is negative in all cases and comparable in size to the effects in Table 3, although here the effects are less precisely estimated.

In the lower panel, we concentrate on white collar workers, because we are concerned that the differential unemployment experience across occupational groups might be what is driving our results. Remember, that we find the biggest fertility effects for white collar workers. If they experience on average lower unemployment than blue collar workers this might explain the lack of an unemployment effect. But the effects for white collar workers are amplified: the indirect effect of firm closure via unemployment is zero or even positive, while the direct effect of firm closure is larger, negative, and significant at least in the 6-year horizon.

This confirms that for women in white collar jobs, a firm closure has a detrimental career effect. Regardless of whether they become unemployed or not, women hit by a firm closure have to postpone their fertility plans in order not to jeopardize their transition into a new firm. This effect extends to a medium-term perspective, within 6 years after firm closure fertility is reduced by approximately 0.4%. Given that we cannot observe completed fertility pe-

²¹We use different measures of unemployment to capture different aspects of the phenomenon. Registered unemployment may not coincide with the time out of a job, so we also look at employment and consider individuals employed less than 75% of the year. 30% of the displaced women are employed less than 75% in the first year compared to 9% of the controls.

²²For these IV estimates we have to use unweighed regressions because there is no clear correspondence between our chosen indicators of unemployment and the composition of the firm closure vs. non-firm closure sample. Our specification in Table 5 therefore has to be compared with the first result in the lower panel of Table 3, which is very close to the average effect across all specifications.

riods we cannot conclude if fertility is only postponed or permanently lowered. Often though temporary postponement may lead to a permanent reduction in fertility not least because for biological reasons the probability of conception decreases with age.

6.5 Theoretical Interpretation of the Empirical Findings

The empirical analysis of employment and wage development after job loss shows that displacement mainly affects income through lower employment, while re-employment wages are hardly affected by the job loss. The employment effects are largest in the first year after job loss and rapidly decrease in subsequent years. We conclude therefore that for young women job displacement is a transitory shock; relative to their lifetime income displacement effects are likely to be small. Nevertheless we see substantial reductions in fertility which appear to be stable at least over a horizon of 6 years. Which are the mechanisms within the theoretical context that are responsible for this effect?

Our theoretical model identifies four main effects by which a job loss might affect fertility decisions. The substitution effect predicts that births are transferred to periods with lower opportunity costs, which would mean an anticipation of births after job loss. All other effects predict delays in fertility or lower fertility rates. The income effect accounts for the inability to smooth consumption during periods with lower income. The employability effect is due to the difficulties young mothers might face in finding a new job. The career effect results from long term income losses a mother might face if she is unable to invest into human capital at a crucial stage of her career. How can we make use of the empirical evidence to distinguish between the different mechanisms and single out the most important ones?

Looking at the pattern of fertility reductions over time and comparing results across subgroups, it becomes clear that we do not find any evidence of a sub-

stitution effect. The negative effects of job displacement seem to outweigh any incentives to anticipate fertility. In particular, the penalty of a lower job finding rate for young mothers might be higher than the opportunity cost effect during unemployment, which would imply that the employability effect directly counteracts the substitution effect.

To distinguish between the income effect and other effects predicting a delay in fertility, we note that the only channel through which an income effect can influence fertility decisions is unemployment. However, when we compare the impact of unemployment on fertility with the direct effect of job loss using the instrumental variables strategy we find no evidence of a negative impact of unemployment on fertility. What we do find is a direct effect of unexpected job loss on fertility, which is present irrespective of whether the woman experiences a spell of unemployment or not. This leads us to rule out explanations in terms of the income effect.

The empirical analysis of the fertility effects by subgroup provides strong evidence of a career effect. Especially, we find that only women in white collar occupations reduce their fertility, but women in blue collar jobs do not. Blue-collar jobs provide a low level of employment protection and limited opportunities for career advancement. Women in white collar occupations, on the other hand, face stronger incentives to invest in career specific human capital and are thus more likely to suffer from a job loss.

Our empirical set up does not allow us to distinguish clearly between career and employability effects. If we assumed that the reduction in job finding rates due to fertility is the same across all groups of mothers, we would think that there is no employability effect as we find no fertility reduction among blue collar women. However, if women in career-oriented occupations face more difficulties in finding a suitable job in the presence of a young child our results could be interpreted as a combination of the employability and career effects. As we have

seen in the example in figure 1 displaced women in career-oriented occupations might face large income losses from the interaction of both effects. These women react by returning to a new job without a delay from a maternity, and thereafter fully invest in career specific training before having children. Hence, both effects work in the same direction and contribute to reduce fertility among white collar women after job displacement.

7 Conclusions

The aim of this paper is to explore how women's fertility decisions are affected by career considerations. The literature has been aware of the incompatibility of career and family demands for women in top positions (Armenti, 2004; Cooney and Uhlenberg, 1989; Ginther and Kahn, 2006), but there is a lack of formal discussion about how much career choices drive the fertility behavior of women in the overall population.

We investigate fertility responses to an unexpected career interruption in the form of a job loss after firm closure. We lay out a theoretical model which allows us to distinguish between different channels through which job loss can affect fertility decisions. A key feature of the model is that we consider the accumulation of firm or career specific human capital, which is destroyed as a consequence of the firm closure and needs to be re-built on a new job. Our empirical results show that the main factor responsible for a reduction of fertility upon job loss is the difficulty women face in pursuing their careers. The experience of unemployment itself is not able to account for this. This effect is not confined to women in top positions, but we find a considerable reduction in fertility for the average white collar worker over a period of six years. On the other hand, fertility decisions of blue collar workers, who face little opportunities for career advancement in their jobs, do not seem to respond to a job loss.

Our results highlight that the increasing importance of professional careers for female workers might go a long way in explaining recent fertility trends. In this context, even temporary labor market shocks, which hit young women at crucial stages of their careers may significantly contribute to delays or reductions in fertility. Our research stresses the importance of career progression and continuity and deemphasizes the role of unemployment, which has assumed particular relevance in explaining fertility trends in some European countries (Adsera, 2005; Ahn and Mira, 2002). Examples of constraints which impede the development of careers would be the high prevalence of fixed-term contracts which delay the entry into permanent positions and thus the establishment of stable careers for young workers (de la Rica, 2005). Our results also imply that family policies like the Austrian and German one, which rely mainly on income support for young parents should be complemented by measures aimed at protecting young mothers' career prospects and labor market attachment like the provision of child care facilities, full-time schools, and more flexible working-time arrangements.

Appendix A

Model setup

Consider a discrete-time setting where individuals have a finite planning horizon and a subjective discount rate ρ . Let r denote the fixed interest rate in the economy. We assume that a woman can influence the probability of birth p_t via the choice of contraception. She derives utility from consumption and the number of children, and disutility from practicing contraception. It is assumed that the utility function is separable over time and in all its arguments. Per period utility is given by $u(c_t) + v(k_t) - \psi(p_t)$, where c_t and k_t are consumption and the number of children, u and v are monotonically increasing and concave, while ψ is monotonically decreasing and convex. All functions are assumed to be twice differentiable.

At the beginning of period t the state variables are assets A_t , employment status e_{t-1} in period $t-1$ ($e_{t-1} = 1$ if the woman was employed last period and 0 otherwise), k_{t-1} number of children by the end of period $t - 1$, and T_t the accumulated job tenure. We assume that the woman enters period 1 after job displacement, when she is unemployed and tenure is reset to zero. For simplicity we also assume she is childless at the beginning of period 1, i.e. $e_0 = 0, k_0 = 0, T_1 = 0$. If the woman is unemployed she receives unemployment benefits b and finds a job at a rate which is exogenously given. Once found, a job is expected to last indefinitely. Wages on the job are paid according to a deterministic scheme and rise with tenure T . Specifically, $w'(T) > 0$, $w''(T) < 0$, and $w(0) > b$.

If a woman is employed at the beginning of period t she chooses p_t and with probability p_t she immediately has a child. After giving birth the woman spends the current period t entirely on maternity leave and earns maternity benefits m with $m < b < w(0)$. During maternity leave she does not accumulate tenure, but she enters the next period $t + 1$ in employment and with $T = T_{t-1}$. With probability $1 - p_t$ the woman does not have a child in period t and earns wage $w(T_t)$. During employment she also accumulates tenure. A woman with no child accumulates one period of tenure per period worked, while a woman with a child accumulates tenure at a rate $\gamma < 1$ each period worked. Tenure grows over time according to the expression $T_{t+1} = T_t + e_t(1 - I(k_t > 0)) + \gamma e_t I(k_t > 0)$, where $I(k_t > 0)$ denotes the indicator function which is equal to 1 if a child is present and zero otherwise.

If the woman enters period t unemployed, she is assumed to find a job at the exogenous rate s if childless and at a lower rate $s\delta$ ($\delta < 1$) if already has a child. If the woman finds a job, she immediately enters employment at the beginning of the period and her choices are the same as those of the employed woman. If she remains unemployed, she chooses p_t and if she has a child she goes on maternity leave and gets maternity benefits m in period t , but she enters period

$t + 1$ still unemployed and with a lower probability of finding a new job.

Optimal Fertility Choice

We focus on decisions about the first birth, because this turns out to be the relevant decision for the women in our empirical setup. See sections 3 and 4 for a more detailed discussion of this point. In each period decisions are taken at three stages. First, the labor market situation of the woman is observed. She is either employed or unemployed, and if unemployed the outcome of her job search effort is realized. Second, the fertility outcome is chosen conditional on her labor market status. Finally, optimal consumption and savings are decided upon and utility is maximized. We express each of these decision nodes in terms of Bellman equations.

Let us start from the situation of a woman who in period t is unemployed and looking for a job. Her value function at the stage of job search U_s is given by

$$U_s(0, k_{t-1}, A_t) = s(k_{t-1})V(0, k_{t-1}, A_t) + (1 - s(k_{t-1}))U(0, k_{t-1}, A_t), \quad (8)$$

with $s(k_t) = s(1 - I(k_t > 0)) + s\delta I(k_t > 0)$.

Now consider what happens when labor market status is known and the woman takes her fertility decision. The value functions for employed and unemployed women, V and U respectively, are given by

$$V(T_t, k_{t-1}, A_t) = \max_{p_t} \quad p_t V_c(T_t, k_{t-1} + 1, A_t) + \\ (1 - p_t) V_c(T_t, k_{t-1}, A_t) - \psi(p_t), \quad (9)$$

$$U(0, k_{t-1}, A_t) = \max_{p_t} \quad p_t U_c(0, k_{t-1} + 1, A_t) + \\ (1 - p_t) U_c(0, k_{t-1}, A_t) - \psi(p_t). \quad (10)$$

After the realization of the job search and fertility outcomes all women know e_t , k_t , their income $I_t \in \{w, b, m\}$ and T_{t+1} , and choose consumption c_t and

savings for period t .²³ At this stage the value functions for employed women with children and without children, V_c^1 and V_c^0 respectively, are

$$V_c^1(T_t, k_t, A_t) = \max_{A_{t+1}} \quad u(m + A_t - \frac{A_{t+1}}{1+r}) + v(k_t) + \frac{V(T_{t+1}, k_t, A_{t+1})}{1+\rho}, \quad (11)$$

$$V_c^0(T_t, k_t, A_t) = \max_{A_{t+1}} \quad u(w(T_t) + A_t - \frac{A_{t+1}}{1+r}) + v(k_t) + \frac{V(T_{t+1}, k_t, A_{t+1})}{1+\rho}. \quad (12)$$

The value functions for unemployed women U_c^1 and U_c^0 are determined analogously.

From equations (9) and (10) we derive the first order conditions for optimal fertility choice in the employed and unemployed states

$$\psi'(p_t^*) = V_c^1 - V_c^0, \quad (13)$$

$$\psi'(p_t^*) = U_c^1 - U_c^0. \quad (14)$$

These equations express the fact that the woman chooses p_t to equate the marginal cost and the marginal benefit of fertility, which is given by the difference between the optimized values of having an additional child or not.

Model Predictions

Our predictions about optimal fertility choices follow from the comparative statics derived from (13) and (14). This way we explore the different channels through which a job loss can affect fertility decisions. The first effects of job loss are to lower income and to lower the opportunity cost of taking a maternity break because of a period of unemployment. To consider the consequences of these effects, we examine the change in p_t^* due to a change in the asset level

²³Other family income, like husband's income is assumed to be exogenous and does not enter our model in order to simplify the discussion.

and a change in the wage rate. To simplify notation let $c_{t,e}^1$ denote optimal consumption of an employed woman who is on maternity leave in period t , and $c_{t,e}^0$ the consumption of a woman who is working.

Differentiating equation (13) with respect to A_t and applying the envelope theorem, we obtain

$$\partial p_{te}^*/\partial A_t = \{u'(c_{t,e}^1) - u'(c_{t,e}^0)\}/\psi''(p_{te}^*) \geq 0, \quad (15)$$

$$\partial p_{tu}^*/\partial A_t = \{u'(c_{t,u}^1) - u'(c_{t,u}^0)\}/\psi''(p_{tu}^*) \geq 0. \quad (16)$$

where p_{te}^* and p_{tu}^* are the optimal values for the employed and unemployed woman, respectively. The effect of additional wealth on fertility depends on the difference in marginal utilities between the maternity leave and working states. If women can smooth consumption perfectly, they set $u'(c_{t,e}^1) = u'(c_{t,e}^0)$, and the effect on fertility is zero. If women face borrowing constraints, then $u'(c_{t,e}^1) - u'(c_{t,e}^0) > 0$, which implies that an additional unit of wealth increases fertility. We call this the *income effect*.

Next consider an increase in period t wage

$$\partial p_{te}^*/\partial w = -u'(c_{t,e}^0)/\psi''(p_{te}^*) \leq 0 \quad (17)$$

The effect of an increase in w is negatively proportional to $u'(c_{t,e}^0)$, because a higher wage decreases the marginal return to having a child to the extent that it raises the value of being employed. This is the *substitution effect*.

Apart from unemployment, a job loss can have significant effects on a woman's career because it destroys her firm or career specific human capital. This channel can be captured by investigating the effect of job tenure on the fertility choice. To simplify matters, assume that a woman's lifetime can be separated into periods in which she is fertile ($0 \leq t \leq R$) and periods in which she is too old to have children ($R + 1 \leq t \leq t_{max}$). A woman employed in the last fertile

period R remains employed for the rest of her life and faces a deterministic income stream.

Suppose that in period R the woman is still childless.²⁴ In this case the effect of an increase in tenure on fertility is given by

$$\begin{aligned} \partial p_{Re}^*/\partial T &= -u'(c_{R,e}^0)w'(T)/\psi''(p_{Re}^*) + \\ &\quad \frac{1}{\psi''(p_{Re}^*)} \sum_{t=1}^{t_{max}-R} \frac{1}{(1+\rho)^t} u'(c_{t,e}^1)w'(T+\gamma(t-1)) - \\ &\quad \frac{1}{\psi''(p_{Re}^*)} \sum_{t=1}^{t_{max}-R} \frac{1}{(1+\rho)^t} u'(c_{t,e}^0)w'(T+t) \end{aligned} \quad (18)$$

The first term in this equation is negative and reflects the higher income loss during maternity leave for women with higher tenure. The difference between the second and third terms, however, is positive because it reflects the differences in marginal utility from a reduced income stream following childbirth which is due to the slowdown in tenure accumulation. Given that the time employed after the fertile life span is long enough, the discount rate is not too large, or the “maternity penalty” in terms of future tenure accumulation is substantial, the positive long term effect could easily outweigh the negative income loss from maternity leave, and $\partial p_{Re}^*/\partial T > 0$. By solving the model backwards we can generalize the same argument to earlier periods and show that fertility is delayed to periods with higher job tenure. This is what we call the *career effect*.

Finally, consider the difference in fertility decisions between unemployed and employed women. Using an argument similar to the one above we start by looking at employed versus unemployed women who are still childless at the beginning of their last fertile period. From equations (13) and (14) we know that differences in their optimal fertility choices are reflected in the gap between

²⁴Note that the fact that a woman is still childless in period R may simply be a consequence of a series of unlucky realizations of p_t . Also, we focus here on decisions about the first birth, as discussed above.

the value functions for having a child and for not having a child; $V_c^1 - V_c^0$ and $U_c^1 - U_c^0$, respectively.

In period R the immediate income loss from having a child is lower for unemployed women, because $u - m < w(T) - m$. In subsequent periods, however, the gap in income for unemployed women is determined by the lower job finding probability following the birth and the lower tenure accumulation once they find employment. Women employed in period R only suffer income losses in subsequent periods from the lower tenure accumulation. Therefore if the long term effect outweighs the income loss in the first period we will have $U_c^1 - U_c^0 > V_c^1 - V_c^0$ and hence $p_{tu}^* \leq p_{te}^*$. If we transfer this result to earlier periods this implies that women will try to delay childbirth until they have found a new job. We call this the *employability effect*.²⁵

Appendix B

Birth records

The Austrian Social Security Database (ASSD) contains entries of births, spells of maternity protection, and parental leave for the period between 1972 and 2002. As discussed in section 3, maternity protection and parental leave is only available to women who worked a certain number of weeks prior to giving birth. Although the ASSD contains actual birth dates, which could potentially be unrelated to the mother's working history, close inspection of the data reveals that the vast majority of births recorded in the data are connected to a maternity protection and/or parental leave spell. This may raise concerns that any measure of fertility directly derived from the ASSD could under-report the number of births in the population.

²⁵Note that in this model the job finding rate and the reduction in the job finding rate after childbirth are exogenous, i.e. they do not depend on individual decisions about search effort. An extension of the model allowing for endogenous search effort and with search costs rising in both search effort and the number of children would lead to a similar prediction.

As a first check on the data we show in Figure 14 the yearly number of births from the Austrian vital statistics and the same number as derived from the ASSD records. The two lines track each other nicely over time. We see them getting closer as female labor force participation rises. However, differences remain and even in the last decade we notice about 18% less births recorded in the ASSD. An obvious reason for the difference in recorded births is the coverage of the ASSD, where self employed, housewives, and civil servants are not included. However, it is still possible that part of the difference between the ASSD births and those recorded in the vital statistics data is due to the fact that the ASSD under-reports births to women who have a more fragmented labor force history which implies extended gaps in their ASSD records.

Because of these concerns, we access information on births from a different data source. From 1993 onwards the Austrian finance ministry keeps electronic records of child benefits paid to either the mother or father of all children below the age of 18. These records contain the birth dates of children, and in most cases both parents' social security numbers. Since take-up of child benefits is almost universal, we should observe birth dates of all children born in Austria from 1975 onwards in these records.

Using the social security number of the mother we match the mothers in the ASSD data to those in the child benefits records. Figure 15 shows the number of births in both data sources for all women in the sample selected for analysis. The gap between the two data sources is particularly big in the period before 1990. This is most likely due to births not recorded in the ASSD because the mothers in our sample had not yet entered the labor market. Between 1990 and 1998 the gap is quite narrow, as our sample of women is selected on the basis of participation to the labor market, and opens-up in later years, when a high percentage of women in our sample drops out of the labor force.

We then compare the births to each mother in the ASSD records with the births

collected via the child benefits records to cross-verify the information we obtain from these sources. We find that we can match about 98% of the birth records in the ASSD using the child benefit data.²⁶ This implies that the child benefit data provide a good coverage for our sample of women. At the same time we find 13% additional births in the child benefits data. This seems to justify our concern that the ASSD birth records could under-report the number of births. Our final measure of fertility is therefore derived by combining the ASSD and child benefits records. This gives us not only a very good measure of fertility, which is independent of the mother's labor force status and history, but also allows us to derive the full fertility history of the women in our sample since the child records go back to 1975.

²⁶Missing matches occur for children born in the early 1970's who are not likely to be eligible for benefits any more, or from cases where the father claims child benefits and does not give information on the mother so that we cannot find a match the mother's social security number. From 1990 onwards there are less than 1% of births in the ASSD which do not have a match in the child benefit records.

References

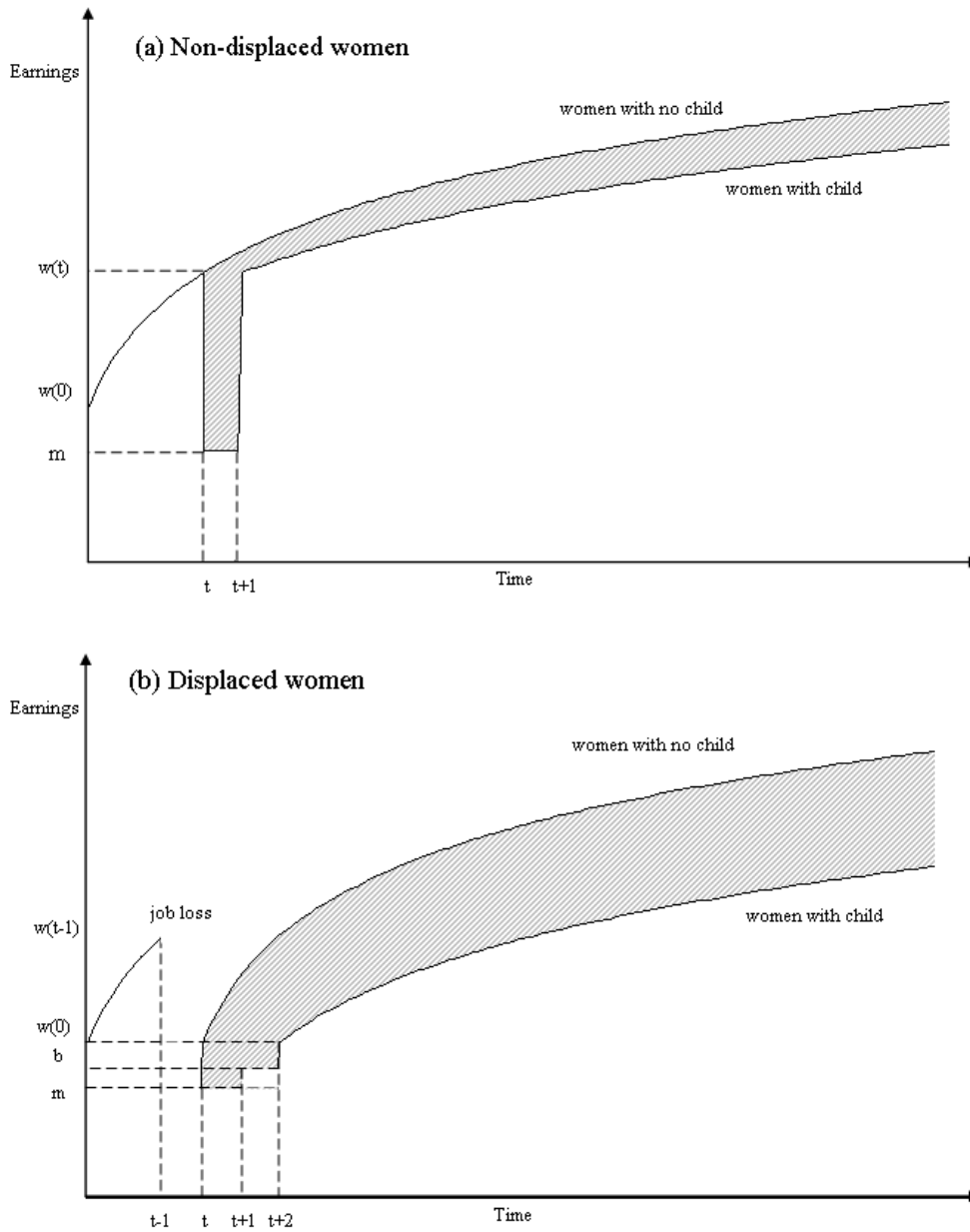
- Adsera, A., 2005. Vanishing children: From high unemployment to low fertility in developed countries. *American Economic Review Papers and Proceedings* 95, 189–193.
- Ahn, N., Mira, P., 2002. A note on the changing relationship between fertility and female employment rates in developed countries. *Journal of Population Economics* 15, 667–682.
- Armenti, C., 2004. May babies and posttenure babies: Maternal decisions of women professors. *The Review of Higher Education* 27, 211–231.
- Bailey, M., 2006. More power to the pill: the impact of contraceptive freedom on women's life cycle labor supply. *Quarterly Journal of Economics* 121, 289–320.
- Becker, G., 1960. An economic analysis of fertility. In: *Demographic and Economic change in developed countries*, Universities-National Bureau of Economic Research Conference Series 11. NBER, Princeton, NJ, pp. 209–231.
- Becker, G., 1965. A theory of the allocation of time. *Economic Journal* 75, 493–517.
- Blackburn, M. L., Bloom, D. E., Neumark, D., 1993. Fertility timing, wages and human capital. *Journal of Population Economics* 6, 1–30.
- Butz, W., Ward, M., 1979. The emergence of countercyclical us fertility. *American Economic Review* 49, 318–328.
- Card, D., Chetty, R., Weber, A., 2007. Cash-on-hand and competing models of intertemporal behavior: New evidence from the labor market. *Quarterly Journal of Economics* 122, 1511–1560.
- Cigno, A., Ermisch, J., 1989. A microeconomic analysis of the timing of births. *European Economic Review* 33, 737–760.

- Cooney, T. M., Uhlenberg, P., 1989. Family-building patterns of professional women: A comparison of lawyers, physicians, and postsecondary teachers. *Journal of Marriage and the Family* 51, 749–758.
- Cunningham, J., Macan, T., 2007. Effects of applicant pregnancy on hiring decisions and interview ratings. *Sex Roles* 57, 497–508.
- de la Rica, S., 2005. Career planning in Spain: Do fixed-term contracts delay marriage and parenthood? *Review of Economics of the Household* 3, 49–73.
- Dustmann, C., Meghir, C., 2005. Wages, experience and seniority. *Review of Economic Studies* 72, 77–108.
- Eliason, M., Storrie, D., Oct 2006. Lasting or latent scars? Swedish evidence on the long-term effects of job displacement. *Journal of Labor Economics* 24, 831–857.
- Ellwood, D., Wilde, T., Batchelder, L., 2004. The mommy track divides: The impact of childbearing on wages of women of differing skill levels. Russell Sage Foundation Working Paper.
- Ginther, D. K., Kahn, S., 2004. Women in economics: Moving up or falling off the academic career ladder. *Journal of Economic Perspectives* 18, 193–214.
- Ginther, D. K., Kahn, S., 2006. Does science promote women? Evidence from academia 1973-2001. NBER Working Paper 12691.
- Goldin, C., 2006. The quiet revolution that transformed women's employment, education, and family. *American Economic Review* 96, 1–21.
- Goldin, C., Katz, L. F., 2002. The power of the pill: oral contraceptives and women's career and marriage decisions. *Journal of Political Economy* 110, 730–770.

- Hotz, V. J., Klerman, J. A., Willis, R. J., 1997. The economics of fertility in developed countries. In: Rosenzweig, M. R., Stark, O. (Eds.), *Handbook of Population and Family Economics*. North Holland, Amsterdam, pp. 275–347.
- Ichino, A., Schwerdt, G., Winter-Ebmer, R., Zweimüller, J., Oct 2007. Too old to work, too young to retire? CESifo Working Paper 2118.
- Imbens, G. W., 2004. Nonparametric estimation of average treatment effects under exogeneity: A review. *Review of Economics and Statistics* 15, 4–29.
- Jacobson, L. S., LaLonde, R. J., Sullivan, D. G., 1993. Earning losses of displaced workers. *American Economic Review* 83, 685–709.
- Lalive, R., Zweimüller, J., 2005. Does parental leave affect fertility and return to work? Evidence from a “true natural experiment”. IZA Discussion Paper 1613.
- Lechner, M., Wiehler, S., 2007. Kids or courses? Gender differences in the effects of active labor market policies. IZA Discussion Paper 2740.
- Lengermann, P., Vilhuber, L., 2002. Abandoning the sinking ship: The composition of worker flows prior to displacement. LEHD Technical Paper 11.
- Lentz, R., Traanaes, T., 2005. Job search and savings: Wealth effects and duration dependence. *Journal of Labor Economics* 23, 467–489.
- Liebenstein, H., 1957. *Economic backwardness and economic growth*. Wiley, New York.
- Light, A., Ureta, M., 1995. Early-career work experience and gender wage differentials. *Journal of Labor Economics* 13, 121–154.
- Miller, A., 2007. Effects of motherhood timing on career path. Mimeo, University of Virginia.

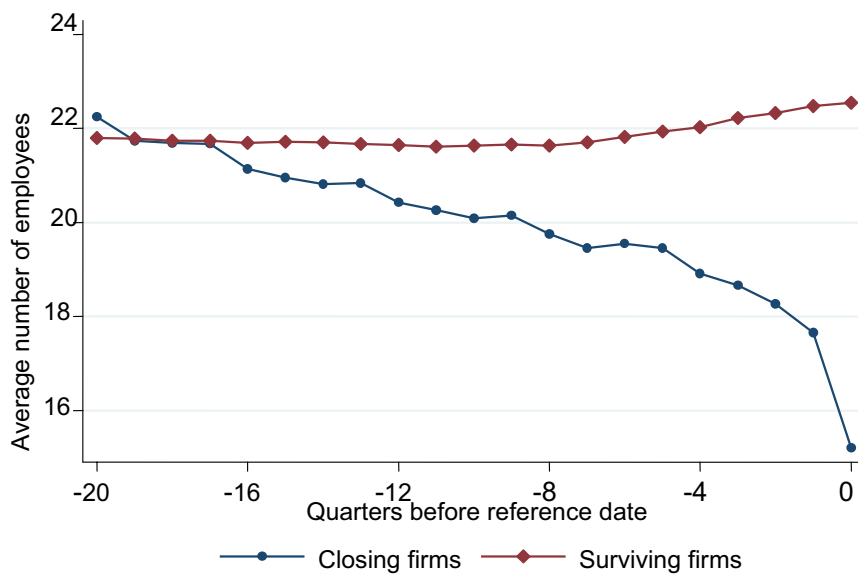
- Mincer, J., 1963. Market prices, opportunity costs and income effects. In: Christ, C. F. (Ed.), *Measurement in economics: Studies in mathematical economics in honor of Yehuda Grunfeld*. Stanford University Press, Stanford, CA.
- Moffitt, R., 1984. Optimal life-cycle profiles of fertility and labor supply. *Research in Population Economics* 5, 29–50.
- Pfann, G. A., Hamermesh, D. S., 2001. Two-sided learning, labor turnover and worker displacement. IZA Discussion Paper 308.
- Rosenbaum, P. R., Rubin, D. B., 1984. Reducing bias in observational studies using subclassification on the propensity score. *Journal of the American Statistical Association* 79, 516–524.
- Ruhm, C., 1991. Are workers permanently scarred by job displacements? *American Economic Review* 81, 319–324.
- Schwerdt, G., Sept 2006. Labor turnover before plant closure: ‘Rats leaving sinking ship’ vs. ‘captain throwing ballast overboard’. Mimeo, EUI Florence.
- Stevens, A. H., 1997. Persistent effects of job displacement: The importance of multiple job losses. *Journal of Labor Economics* 15, 165–188.
- Tien, H. H., 1967. Mobility, non-familial activity, and fertility. *Demography* 4, 218–227.

Figure 1: Fertility and job displacement



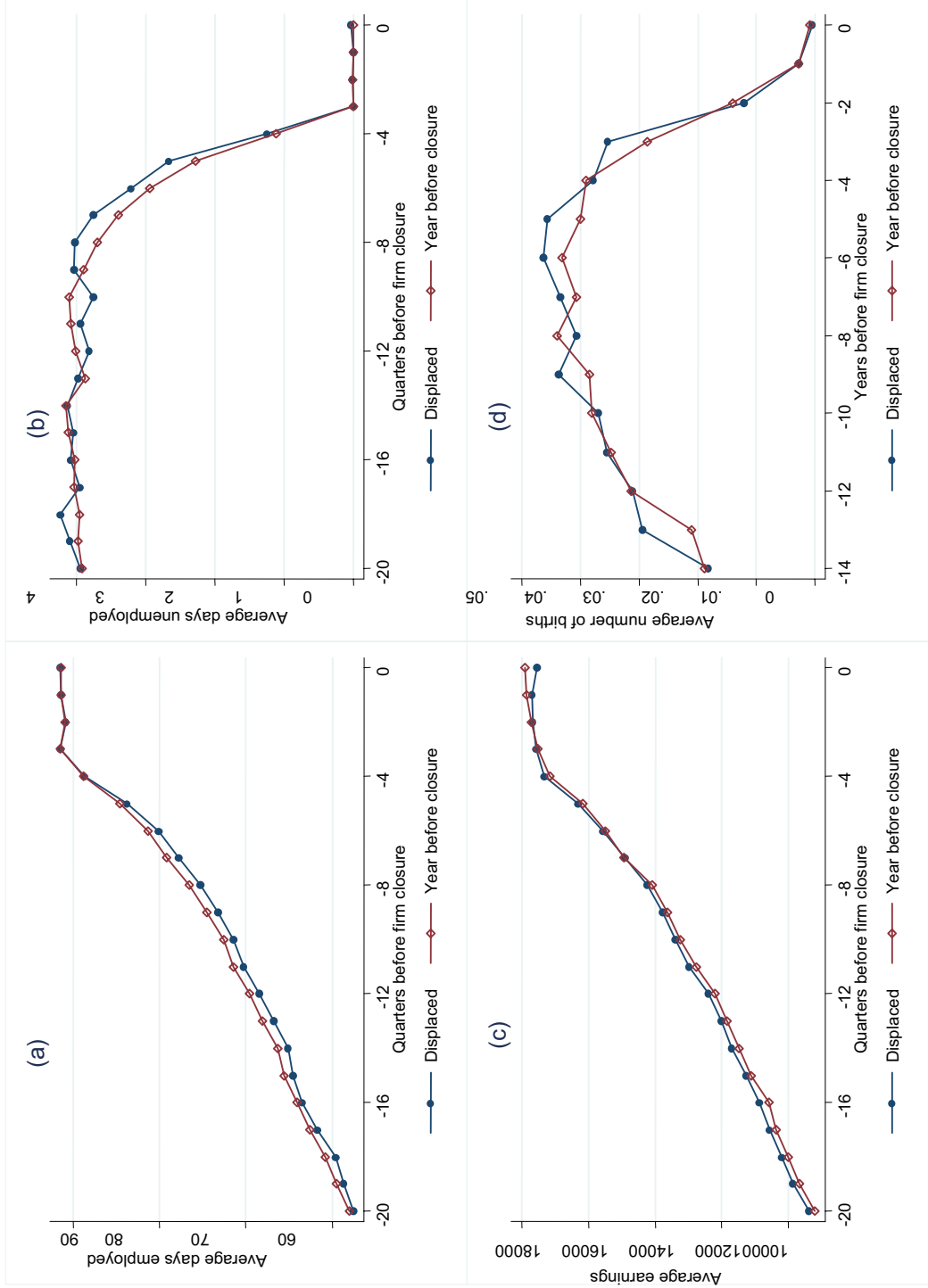
Notes: Panel (a) represents the wage-tenure profile of non-displaced women. It distinguishes between women without a child and women who have a child at time t and are on maternal leave between t and $t + 1$. Panel (b) represents the wage-tenure profile of women displaced at time $t-1$, who are unemployed between $t-1$ and t . It distinguishes between women without a child and women who have a child at time t . The latter are shown to be on maternal leave between t and $t+1$ and to suffer a second unemployment spell between $t+1$ and $t+2$.

Figure 2: Average firm size in closing and surviving firms



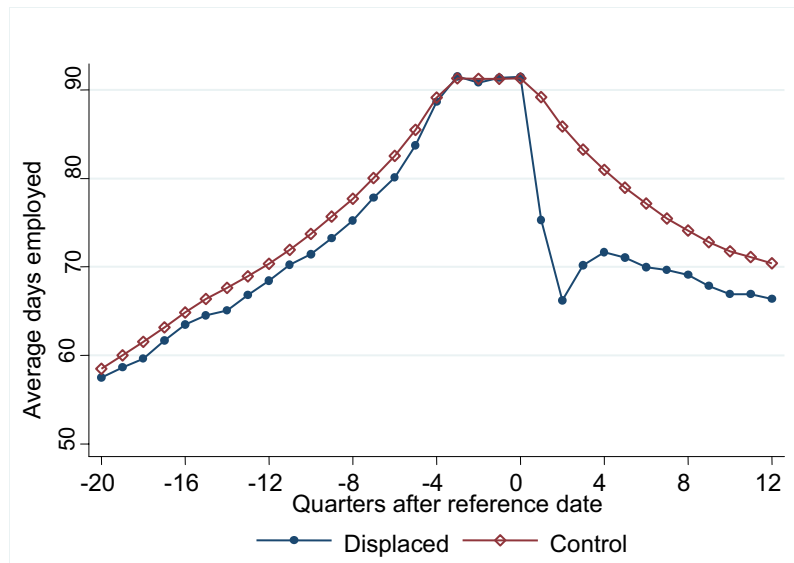
Notes: Average number of employees in closing firms and surviving firms by quarter.

Figure 3: Workforce composition of closing firms at the closure date and one year before closure



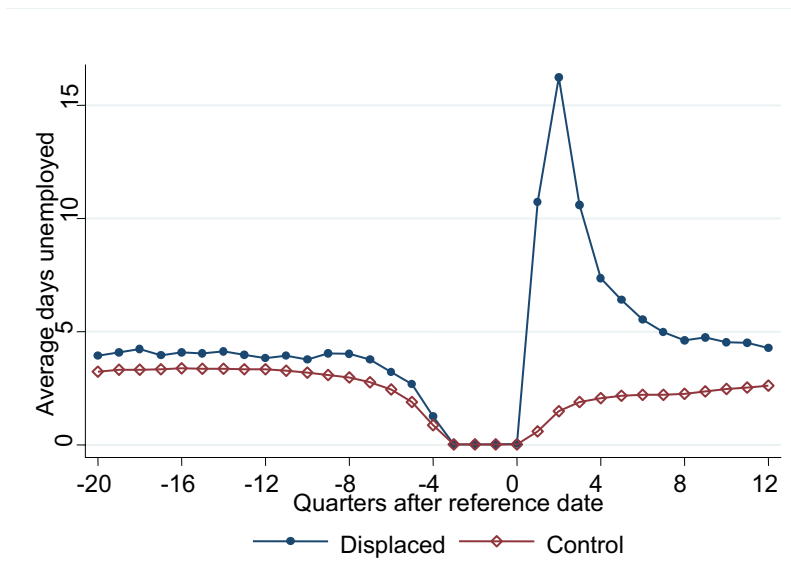
Notes: Comparison between displaced women and women working in closing firms one year before the closure. Panel (a) refers to average number of days in employment by quarter, panel (b) refers to average number of days in unemployment by quarter, panel (c) refers to average earnings by quarter, and panel (d) refers to average number of births per year.

Figure 4: Average days employed by quarter



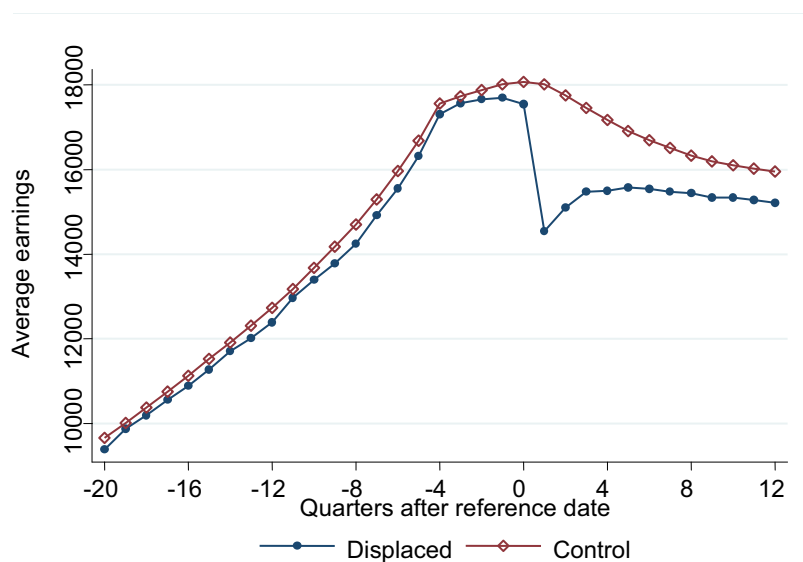
Notes: Comparison between the average number of days employed of displaced and control women by quarter.

Figure 5: Average days unemployed by quarter



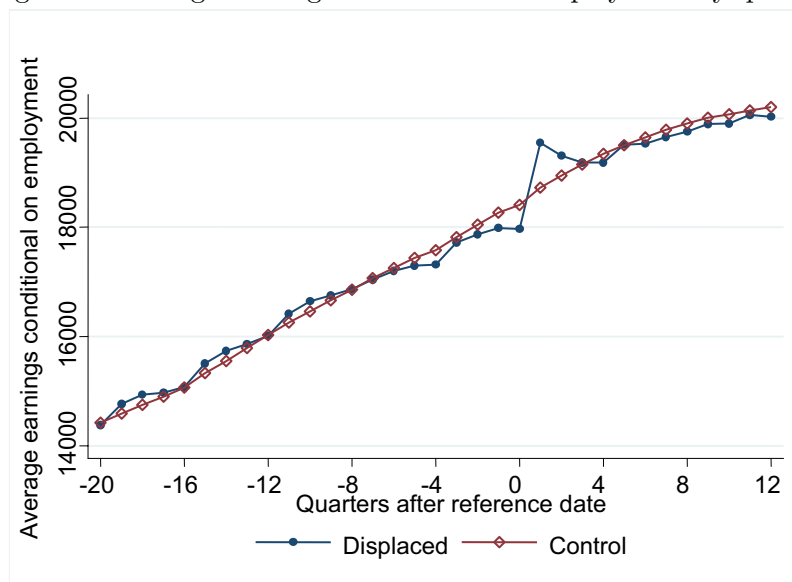
Notes: Comparison between the average number of days unemployed of displaced and control women by quarter.

Figure 6: Average earnings by quarter



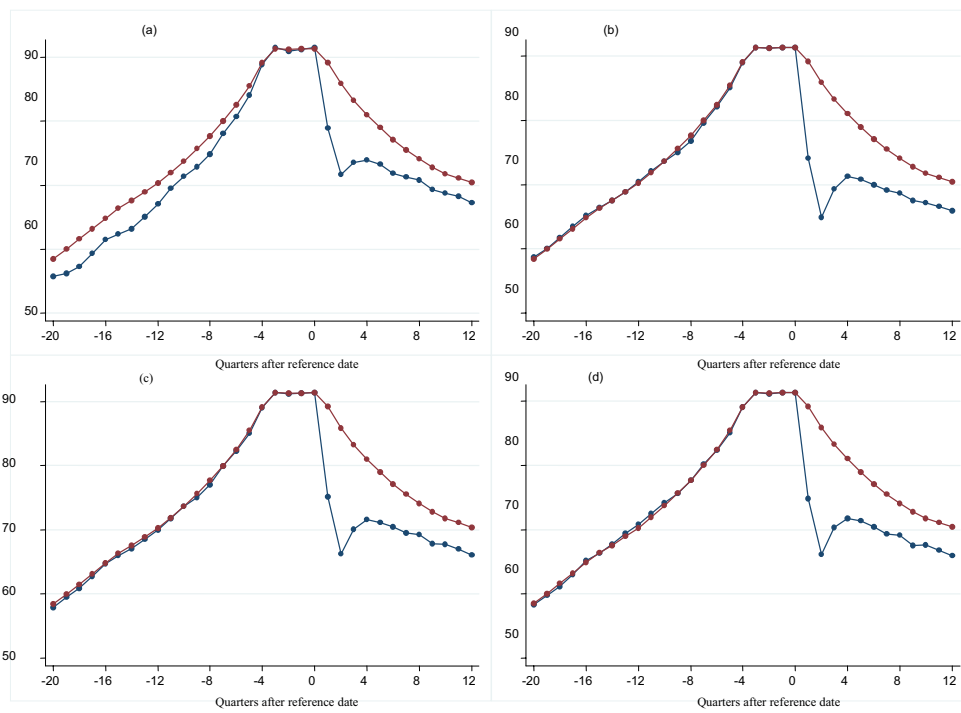
Notes: Comparison between the average earnings of displaced and control women by quarter.

Figure 7: Average earnings conditional on employment by quarter



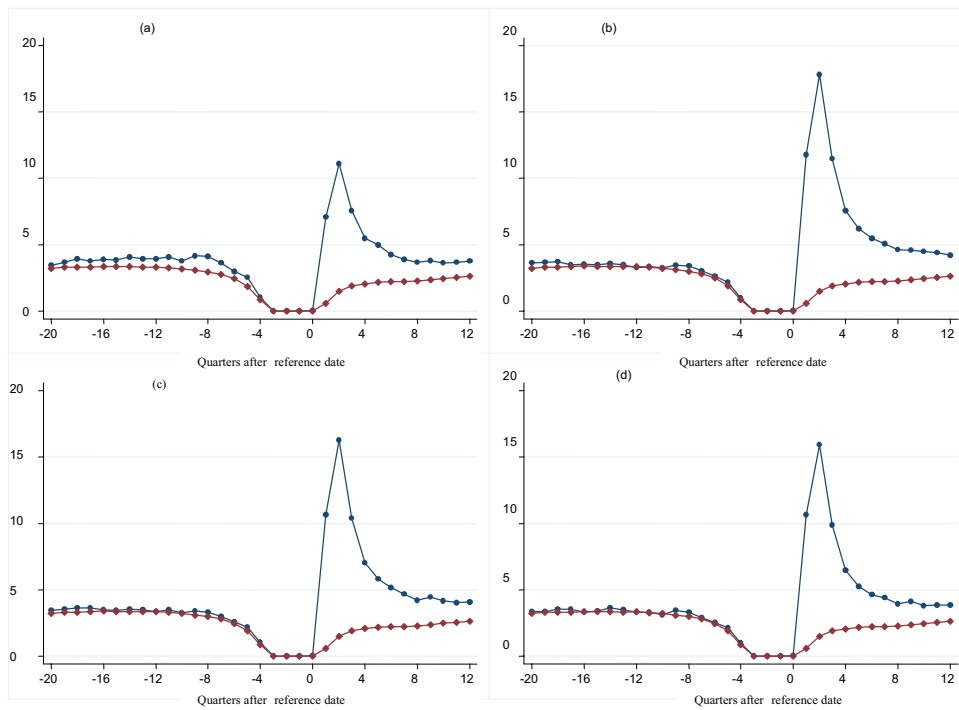
Notes: Comparison between the average earnings (conditional on employment) of displaced and control women by quarter.

Figure 8: Average days in employment by quarter weighted by propensity scores



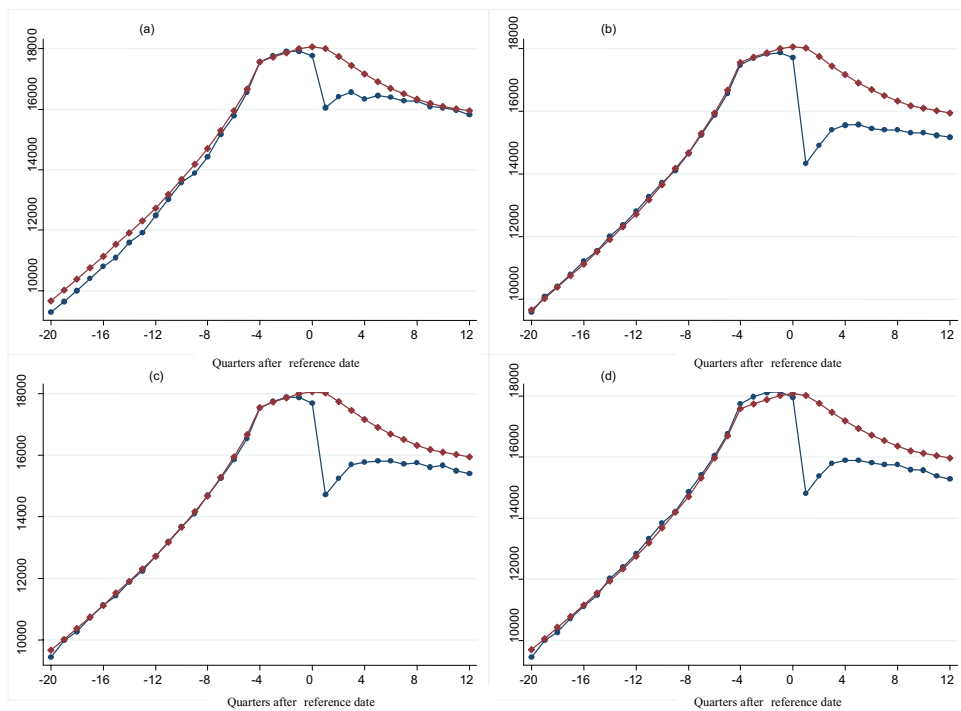
Notes: Comparison between the average number of days in employment of displaced (blue) and control (red) women by quarter. Average number of days in employment is weighted by firm characteristics in panel (a), individual characteristics in panel (b), selected firm and all individual characteristics in panel (c), and all firm and all individual characteristics in panel (d).

Figure 9: Average days in unemployment by quarter weighted by propensity scores



Notes: Comparison between the average number of days in unemployment of displaced (blue) and control (red) women by quarter. Average number of days in unemployment is weighted by firm characteristics in panel (a), individual characteristics in panel (b), selected firm and all individual characteristics in panel (c), and all firm and all individual characteristics in panel (d).

Figure 10: Average earnings by quarter weighted by propensity scores



Notes: Comparison between the average earnings of displaced (blue) and control (red) women by quarter. Average earnings are weighted by firm characteristics in panel (a), individual characteristics in panel (b), selected firm and all individual characteristics in panel (c), and all firm and all individual characteristics in panel (d).

Figure 11: Average number of births by year

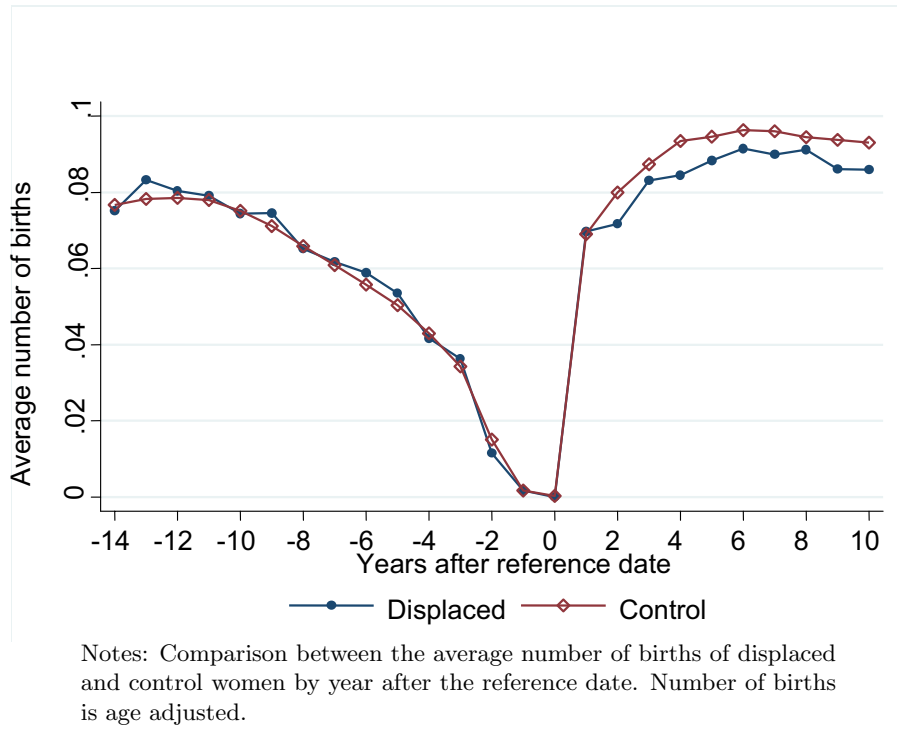


Figure 12: Average number of births by quarter

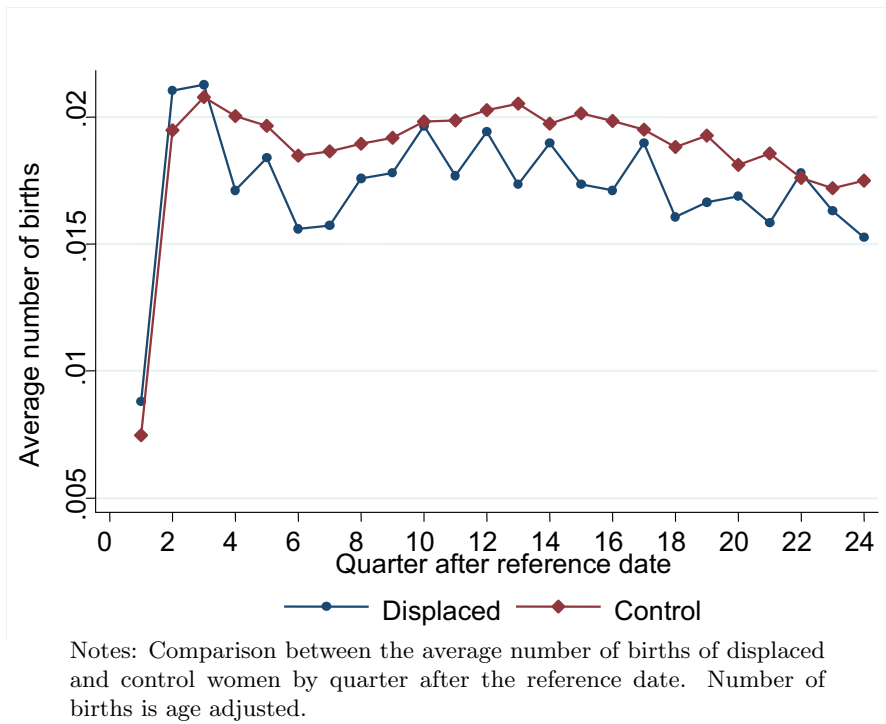
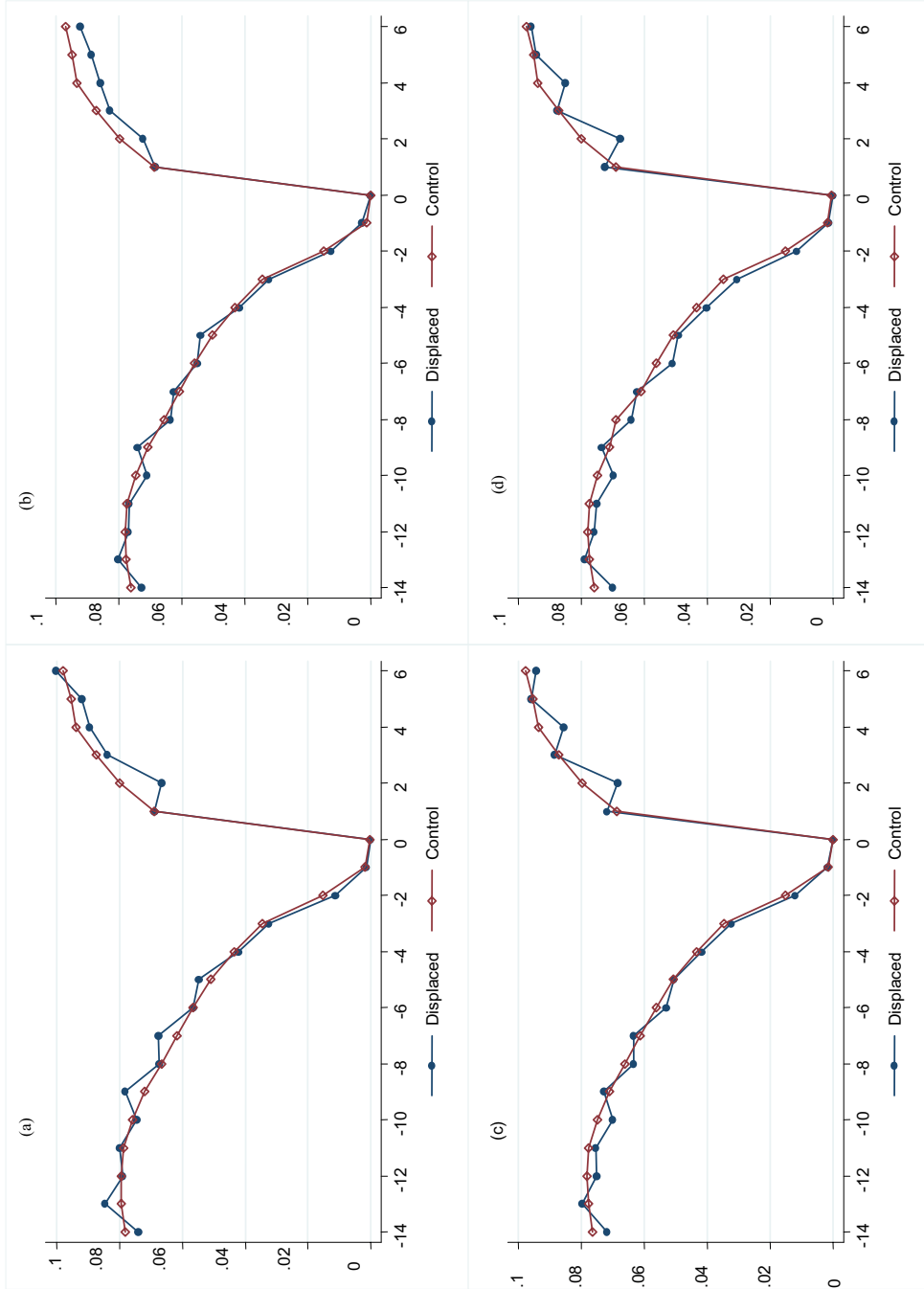
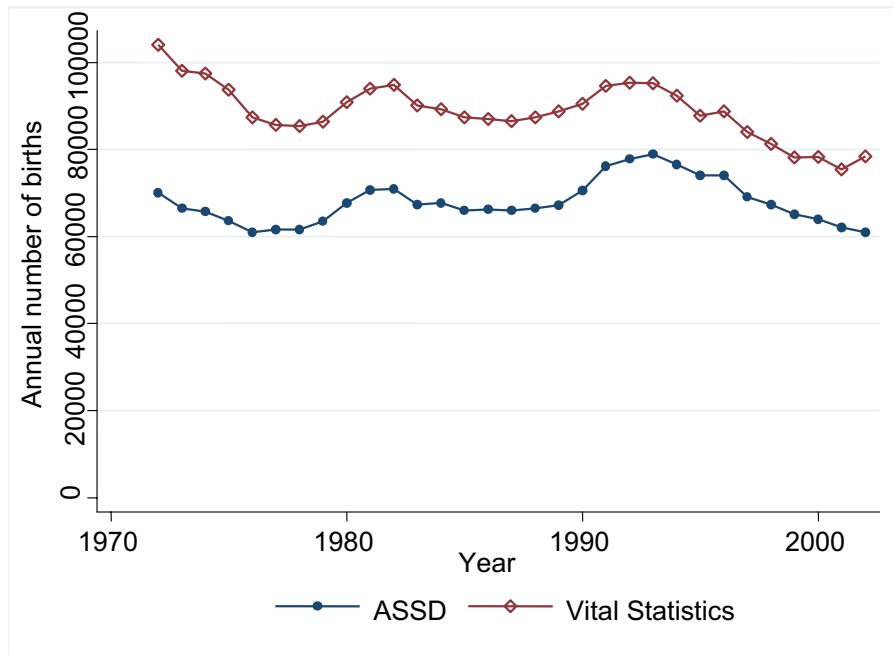


Figure 13: Average number of births by year weighted by propensity scores



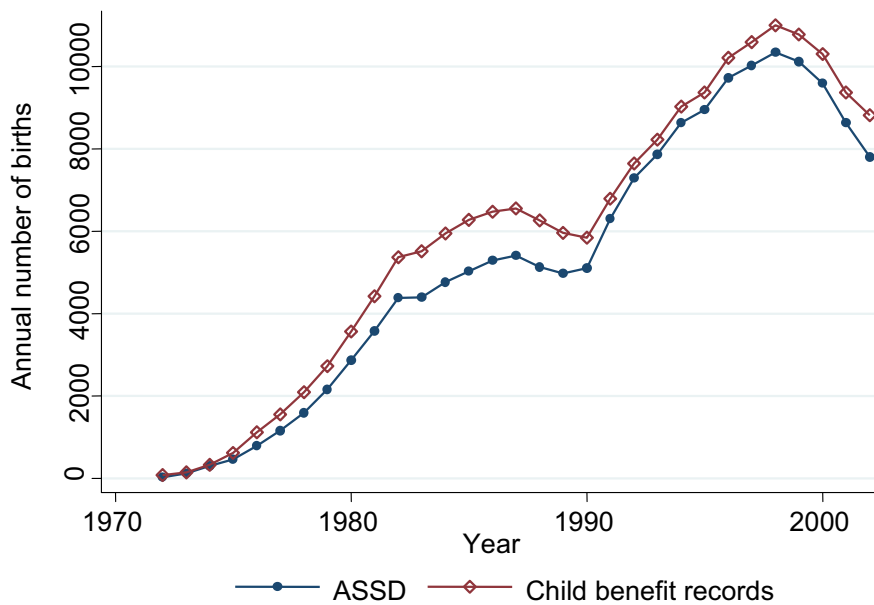
Notes: Comparison between the average number of births to displaced (blue) and control (red) women by year since reference date. Average number of births is weighted by firm characteristics in panel (a), individual characteristics in panel (b), selected firm and all individual characteristics in panel (c), and all firm and all individual characteristics in panel (d).

Figure 14: Number of births per year



Notes: Annual number of births in the ASSD data and in the population. Source: ASSD and Statistics Austria.

Figure 15: Number of births per year in the ASSD and Ministry of Finance child benefit records



Notes: Annual number of births in the sample selected for estimation in the ASSD and child benefit records. Source: ASSD and Austrian Ministry of Finance.

Table 1: Firm Characteristics

	Closing Firms			Surviving Firms		
	Mean	Median	Std.Dev.	Mean	Median	Std.Dev.
Employees quarter 0	15	7	24	23	10	33
Employees quarter -4	19	9	27	22	10	32
Female employees quarter 0	7	4	12	10	5	15
Female employees quarter -4	8	4	14	9	5	14
Employment growth year -1	-0.10	-0.1	0.34	0.05	0	0.22
Employment growth year -4 to -2	0.06	0.00	0.37	0.14	0.00	0.33
Turnover quarter 0	0.42	0.18	1.13	0.15	0.10	0.20
Turnover year -2	0.95	0.76	1.43	0.69	0.56	0.65
Turnover year -3	0.89	0.71	0.87	0.71	0.57	0.83
Median earnings quarter 0	18,143	16,720	7,330	18,152	17,156	6,559
Median earnings quarter -4	17,252	15,878	6,866	17,476	16,506	6,411
Firm age	11.52	10	8.19	13.53	15	7.91
Censored firm age	0.26	0	0.44	0.35	0	0.48
Manufacturing	0.26	0	0.44	0.23	0	0.42
Sales	0.41	0	0.49	0.34	0	0.47
Transport	0.05	0	0.22	0.04	0	0.20
Services	0.28	0	0.45	0.39	0	0.49
Vienna	0.28	0	0.45	0.23	0	0.42
Lower Austria	0.18	0	0.39	0.18	0	0.38
Upper Austria	0.17	0	0.37	0.17	0	0.38
South	0.18	0	0.39	0.20	0	0.40
Salzburg	0.07	0	0.26	0.08	0	0.27
West	0.12	0	0.32	0.14	0	0.35
Year						
1990	0.08		0.28	0.11		0.31
1991	0.10		0.30	0.11		0.31
1992	0.11		0.32	0.11		0.31
1993	0.11		0.32	0.10		0.30
1994	0.11		0.31	0.10		0.31
1995	0.11		0.32	0.11		0.31
1996	0.12		0.32	0.11		0.31
1997	0.12		0.33	0.12		0.33
1998	0.13		0.33	0.13		0.34
Quarter						
10-Feb	0.19		0.39	0.24		0.42
10-May	0.21		0.40	0.25		0.43
10-Aug	0.21		0.41	0.26		0.44
10-Nov	0.39		0.49	0.26		0.44
Observations	3,050			41,240		

Notes: Sample of firms with at least one female employee aged between 18 and 35 with one year of tenure. For closing firms quarter 0 refers to the closing date, for surviving firms it represents the reference date. Quarter -4 refers to the quarter one year before the reference date. Year -1 is the last year before the reference date, year -2 the second but last year, and so on. Turnover rates are defined by the number of hires plus number of separations within the given year divided by number of employees at the end of the year. Median earnings refer to the median earnings in Euro (prices 2000).

Table 2: Individual Characteristics

	Displaced	Employed one year before closure	Control	Displaced-Control % difference
Age	27.23 (4.67)	27.01 (4.68)	27.10 (4.71)	0.46%
Austrian	0.94 (0.24)	0.95 (0.22)	0.96 (0.21)	-2.02%
Age at labor market entry	17.02 (3.03)	16.90 (2.84)	16.91 (2.72)	0.66%
Apprenticeship	0.40 (0.49)	0.40 (0.49)	0.37 (0.48)	9.44%
Blue collar	0.24 (0.42)	0.27 (0.44)	0.26 (0.44)	-8.97%
Number of children	0.46 (0.76)	0.44 (0.75)	0.44 (0.75)	5.21%
Experience (months)	104 (53.40)	105 (53.36)	104 (52.68)	0.37%
Tenure (months)	43 (34.40)	44 (34.75)	48 (36.81)	-11.98%
Earnings	17,547 (7,765)	17,902 (7,027)	18,070 (7,373)	-2.89%
Pregnant	0.029 (0.17)	0.028 (0.16)	0.026 (0.16)	9.88%
Births next 3 years	0.21 (0.47)	0.22 (0.46)	0.23 (0.47)	-5.57%
Births next 6 years	0.42 (0.69)	0.44 (0.69)	0.46 (0.70)	-7.97%
Observations	8,651	10,229	218,548	
Non-pregnant women				
Births next 3 years	0.18 (0.43)	0.18 (0.42)	0.20 (0.44)	-7.92%
Births next 6 years	0.39 (0.66)	0.40 (0.66)	0.43 (0.68)	-9.35%
Observations	8,401	9,945	212,738	

Notes: Variable means, standard deviations in parentheses. Displaced group includes women aged 18 to 35 with at least one year of tenure in closing firms at the closure date. Employed one year before closure group includes women aged 18 to 35 with at least one year of tenure and employed in the closing firms one year before the closure date. Control group is a 5% random subsample of women aged 18 to 35 with at least one year of tenure in firms that do not close within the next 2 years of the reference date. The outcome variables are given by the number of children born after 3 (or 6) years of the reference date. When considering non-pregnant women the outcome variable includes the number of children born between 6 months and 3 (or 6) years of the the reference date.

Table 3: Effect of firm closure on fertility

	Births next 3 years	Births next 6 years
<i>With no covariates</i>		
Unweighted	-0.016** (0.005)	-0.040** (0.008)
Weighted: firm char.	-0.010 (0.007)	-0.022 (0.012)
Weighted: individual char.	-0.014** (0.005)	-0.036** (0.008)
Weighted: individual and some firm char.	-0.010 (0.007)	-0.021* (0.010)
Weighted: individual and all firm char.	-0.010 (0.010)	-0.022 (0.013)
<i>With covariates</i>		
Unweighted	-0.011* (0.005)	-0.027** (0.007)
Weighted: firm char.	-0.011 (0.007)	-0.023* (0.012)
Weighted: individual char.	-0.014** (0.005)	-0.034** (0.008)
Weighted: individual and some firm char.	-0.011 (0.006)	-0.024* (0.010)
Weighted: individual and all firm char.	-0.013 (0.008)	-0.027* (0.012)
Observations	221,139	221,139

Notes: Displaced group includes women aged 18 to 35 with at least one year of tenure in closing firms at the closure date. Control group is a 5% random subsample of women aged 18 to 35 with at least one year of tenure in firms that do not close within the next 2 years of the reference date. The outcome variable births next 3 years measures the number of children born between 6 and 36 months after the reference date. Covariates include: number of children born in the last 3, 6, and 9 years, age and its square, tenure, experience, indicator for apprenticeship, blue collar status, earnings at the reference date, year and quarter dummies. For weighted regressions standard errors are bootstrapped (500 replications). Symbols: ** significant at 1%;* significant at 5%.

Table 4: Heterogeneous effects of firm closure on fertility

	With no covariates		With covariates	
	Births next 3 years	Births next 6 years	Births next 3 years	Births next 6 years
No previous children	-0.022** (0.006)	-0.053** (0.009)	-0.018** (0.006)	-0.044** (0.009)
Previous children	0.002 (0.009)	0.005 (0.013)	0.003 (0.008)	0.005 (0.013)
Bluecollar	0.012 (0.010)	-0.001 (0.016)	0.012 (0.010)	-0.001 (0.015)
Whitecollar	-0.024** (0.006)	-0.052** (0.009)	-0.018** (0.005)	-0.036** (0.008)
Age<25	-0.010 (0.009)	-0.039** (0.013)	-0.009 (0.008)	-0.033* (0.013)
Age>=25	-0.016* (0.006)	-0.033** (0.009)	-0.013* (0.006)	-0.025** (0.009)
Experience 1st tertile	-0.013 (0.008)	-0.034* (0.013)	-0.010 (0.008)	-0.020 (0.013)
Experience 2nd tertile	-0.025** (0.008)	-0.057** (0.013)	-0.023** (0.008)	-0.051** (0.013)
Experience 3rd tertile	0.001 (0.008)	-0.010 (0.013)	0.001 (0.008)	-0.011 (0.013)
Wage 1st tertile	0.001 (0.008)	-0.009 (0.012)	0.002 (0.008)	-0.004 (0.012)
Wage 2nd tertile	-0.009 (0.009)	-0.048** (0.014)	-0.003 (0.009)	-0.032* (0.013)
Wage 3rd tertile	-0.034** (0.009)	-0.057** (0.013)	-0.031** (0.008)	-0.052** (0.013)
Observations	221,139	221,139	221,139	221,139

Notes: Displaced group includes women aged 18 to 35 with at least one year of tenure in closing firms at the closure date. Control group is a 5% random subsample of women aged 18 to 35 with at least one year of tenure in firms that do not close within the next 2 years of the reference date. The outcome variable births next 3 years measures the number of children born between 6 and 36 months after the reference date. Covariates include: number of children born in the last 3, 6, and 9 years, age and its square, tenure, experience, indicator for apprenticeship, blue collar status, earnings at the reference date, year and quarter dummies. For weighted regressions standard errors are bootstrapped (500 replications). Symbols: ** significant at 1%;* significant at 5%.

Table 5: Pure displacement versus unemployment effect on fertility

	<u>Model 1</u>		<u>Model 2</u>		<u>Model 3</u>	
	Births next 3 years	Births next 6 years	Births next 3 years	Births next 6 years	Births next 3 years	Births next 6 years
<i>All Women</i>						
Firm closure	-0.015 (0.010)	-0.023 (0.015)	-0.016 (0.012)	-0.024 (0.017)	-0.014 (0.012)	-0.025 (0.019)
Unemployment	0.046 (0.086)	0.005 (0.128)	0.023 (0.038)	0.005 (0.056)	0.019 (0.055)	0.011 (0.082)
Observations	221,139					
<i>Women in White Collar Jobs</i>						
Firm closure	-0.018 (0.012)	-0.036* (0.018)	-0.023 (0.012)	-0.042* (0.019)	-0.017 (0.013)	-0.038* (0.020)
Unemployment	0.011 (0.112)	0.051 (0.169)	0.022 (0.046)	0.046 (0.069)	0.002 (0.063)	0.040 (0.096)
Observations	164,215					
F-stat (19 d.o.f.)	161.81		94.46		38.29	

Notes: Estimations from instrumental variable regressions, where the unemployment variable is instrumented by firm closure interacted with 8 year, 3 season, 3 industry, and 5 region dummies. F-statistics at the bottom of the table refer to the joint significance of the excluded instruments in the first stage regression for the sample of all women. Unemployment is measured by the percentage of time unemployed in the first year after the reference date (Model 1), an indicator for being unemployed for at least one day in the first year (Model 2), and an indicator for being employed less than 75% of the time in the first year (Model 3). Displaced group includes women aged 18 to 35 with at least one year of tenure in closing firms at the closure date. Control group is a 5% random subsample of women aged 18 to 35 with at least one year of tenure in firms that do not close within the next 2 years of the reference date. The outcome variable births next 3 years measures the number of children born between 6 and 36 months after the reference date. Covariates include: number of children born in the last 3, 6, and 9 years, age and its square, tenure, experience, indicator for apprenticeship, blue collar status, earnings at the reference date, year and quarter dummies. Symbols: ** significant at 1%;* significant at 5%.

CESifo Working Paper Series

for full list see www.cesifo-group.org/wp

(address: Poschingerstr. 5, 81679 Munich, Germany, office@cesifo.de)

- 2116 Katrin Assenmacher-Wesche and M. Hashem Pesaran, Assessing Forecast Uncertainties in a VECX Model for Switzerland: An Exercise in Forecast Combination across Models and Observation Windows, October 2007
- 2117 Ben Lockwood, Voting, Lobbying, and the Decentralization Theorem, October 2007
- 2118 Andrea Ichino, Guido Schwerdt, Rudolf Winter-Ebmer and Josef Zweimüller, Too Old to Work, too Young to Retire?, October 2007
- 2119 Wolfgang Eggert, Tim Krieger and Volker Meier, Education, Unemployment and Migration, October 2007
- 2120 Stefan Napel and Mika Widgrén, The European Commission – Appointment, Preferences, and Institutional Relations, October 2007
- 2121 Bertil Holmlund and Martin Söderström, Estimating Income Responses to Tax Changes: A Dynamic Panel Data Approach, October 2007
- 2122 Doina Maria Radulescu, From Separate Accounting to Formula Apportionment: Analysis in a Dynamic Framework, October 2007
- 2123 Jelle Brouwer, Richard Paap and Jean-Marie Viaene, The Trade and FDI Effects of EMU Enlargement, October 2007
- 2124 Kurt R. Brekke, Luigi Siciliani and Odd Rune Straume, Competition and Waiting Times in Hospital Markets, October 2007
- 2125 Alexis Direr, Flexible Life Annuities, October 2007
- 2126 Johannes Becker and Clemens Fuest, Quality versus Quantity – The Composition Effect of Corporate Taxation on Foreign Direct Investment, October 2007
- 2127 Balázs Égert, Real Convergence, Price Level Convergence and Inflation Differentials in Europe, October 2007
- 2128 Marko Koethenbueger, Revisiting the “Decentralization Theorem” – On the Role of Externalities, October 2007
- 2129 Axel Dreher, Silvia Marchesi and James Raymond Vreeland, The Politics of IMF Forecasts, October 2007
- 2130 Andreas Knabe and Ronnie Schöb, Subsidizing Extra Jobs: Promoting Employment by Taming the Unions, October 2007

- 2131 Michel Beine and Bertrand Candelon, Liberalization and Stock Market Co-Movement between Emerging Economies, October 2007
- 2132 Dieter M. Urban, FDI Technology Spillovers and Wages, October 2007
- 2133 Valentina Bosetti, Carlo Carraro, Emanuele Massetti and Massimo Tavoni, Optimal Energy Investment and R&D Strategies to Stabilise Greenhouse Gas Atmospheric Concentrations, October 2007
- 2134 David-Jan Jansen and Jakob de Haan, The Importance of Being Vigilant: Has ECB Communication Influenced Euro Area Inflation Expectations?, October 2007
- 2135 Oliver Falck, Heavyweights – The Impact of Large Businesses on Productivity Growth, October 2007
- 2136 Xavier Freixas and Bruno M. Parigi, Banking Regulation and Prompt Corrective Action, November 2007
- 2137 Jan K. Brueckner, Partial Fiscal Decentralization, November 2007
- 2138 Silvia Console Battilana, Uncovered Power: External Agenda Setting, Sophisticated Voting, and Transnational Lobbying, November 2007
- 2139 Alan J. Auerbach, Michael P. Devereux and Helen Simpson, Taxing Corporate Income, November 2007
- 2140 Lorenzo Cappellari, Paolo Ghinetti and Gilberto Turati, On Time and Money Donations, November 2007
- 2141 Roel Beetsma and Heikki Oksanen, Pension Systems, Ageing and the Stability and Growth Pact, November 2007
- 2142 Hikaru Ogawa and David E. Wildasin, Think Locally, Act Locally: Spillovers, Spillbacks, and Efficient Decentralized Policymaking, November 2007
- 2143 Alessandro Cigno, A Theoretical Analysis of the Effects of Legislation on Marriage, Fertility, Domestic Division of Labour, and the Education of Children, November 2007
- 2144 Kai A. Konrad, Mobile Tax Base as a Global Common, November 2007
- 2145 Ola Kvaløy and Trond E. Olsen, The Rise of Individual Performance Pay, November 2007
- 2146 Guglielmo Maria Caporale, Yannis Georgellis, Nicholas Tsitsianis and Ya Ping Yin, Income and Happiness across Europe: Do Reference Values Matter?, November 2007
- 2147 Dan Anderberg, Tax Credits, Income Support and Partnership Decisions, November 2007

- 2148 Andreas Irmen and Rainer Klump, Factor Substitution, Income Distribution, and Growth in a Generalized Neoclassical Model, November 2007
- 2149 Lorenz Blume, Jens Müller and Stefan Voigt, The Economic Effects of Direct Democracy – A First Global Assessment, November 2007
- 2150 Axel Dreher, Pierre-Guillaume Méon and Friedrich Schneider, The Devil is in the Shadow – Do Institutions Affect Income and Productivity or only Official Income and Official Productivity?, November 2007
- 2151 Valentina Bosetti, Carlo Carraro, Emanuele Massetti and Massimo Tavoni, International Energy R&D Spillovers and the Economics of Greenhouse Gas Atmospheric Stabilization, November 2007
- 2152 Balázs Égert and Dubravko Mihaljek, Determinants of House Prices in Central and Eastern Europe, November 2007
- 2153 Christa Hainz and Hendrik Hakenes, The Politician and his Banker, November 2007
- 2154 Josef Falkinger, Distribution and Use of Knowledge under the “Laws of the Web”, December 2007
- 2155 Thorvaldur Gylfason and Eduard Hochreiter, Growing Apart? A Tale of Two Republics: Estonia and Georgia, December 2007
- 2156 Morris A. Davis and François Ortalo-Magné, Household Expenditures, Wages, Rents, December 2007
- 2157 Andreas Haufler and Christian Schulte, Merger Policy and Tax Competition, December 2007
- 2158 Marko Köthenbürger and Panu Poutvaara, Rent Taxation and its Intertemporal Welfare Effects in a Small Open Economy, December 2007
- 2159 Betsey Stevenson, Title IX and the Evolution of High School Sports, December 2007
- 2160 Stergios Skaperdas and Samarth Vaidya, Persuasion as a Contest, December 2007
- 2161 Morten Bønsnes and Christian Schultz, Arm’s Length Provision of Public Services, December 2007
- 2162 Bas Jacobs, Optimal Redistributive Tax and Education Policies in General Equilibrium, December 2007
- 2163 Christian Jaag, Christian Keuschnigg and Mirela Keuschnigg, Pension Reform, Retirement and Life-Cycle Unemployment, December 2007
- 2164 Dieter M. Urban, Terms of Trade, Catch-up, and Home Market Effect: The Example of Japan, December 2007

- 2165 Marcelo Resende and Rodrigo M. Zeidan, Lionel Robbins: A Methodological Reappraisal, December 2007
- 2166 Samuel Bentolila, Juan J. Dolado and Juan F. Jimeno, Does Immigration Affect the Phillips Curve? Some Evidence for Spain, December 2007
- 2167 Rainald Borck, Federalism, Fertility and Growth, December 2007
- 2168 Erkki Koskela and Jan König, Strategic Outsourcing, Profit Sharing and Equilibrium Unemployment, December 2007
- 2169 Egil Matsen and Øystein Thøgersen, Habit Formation, Strategic Extremism and Debt Policy, December 2007
- 2170 Torben M. Andersen and Allan Sørensen, Product Market Integration and Income Taxation: Distortions and Gains from Trade, December 2007
- 2171 J. Atsu Amegashie, American Idol: Should it be a Singing Contest or a Popularity Contest?, December 2007
- 2172 Patricia Apps and Ray Rees, Household Models: An Historical Perspective, December 2007
- 2173 Ben Greiner, Axel Ockenfels and Peter Werner, The Dynamic Interplay of Inequality and Trust – An Experimental Study, December 2007
- 2174 Michael Melvin and Magali Valero, The Dark Side of International Cross-Listing: Effects on Rival Firms at Home, December 2007
- 2175 Gebhard Flaig and Horst Rottmann, Labour Market Institutions and the Employment Intensity of Output Growth. An International Comparison, December 2007
- 2176 Alexander Chudik and M. Hashem Pesaran, Infinite Dimensional VARs and Factor Models, December 2007
- 2177 Christoph Moser and Axel Dreher, Do Markets Care about Central Bank Governor Changes? Evidence from Emerging Markets, December 2007
- 2178 Alessandra Sgobbi and Carlo Carraro, A Stochastic Multiple Players Multi-Issues Bargaining Model for the Piave River Basin, December 2007
- 2179 Christa Hainz, Creditor Passivity: The Effects of Bank Competition and Institutions on the Strategic Use of Bankruptcy Filings, December 2007
- 2180 Emilia Del Bono, Andrea Weber and Rudolf Winter-Ebmer, Clash of Career and Family: Fertility Decisions after Job Displacement, January 2008