



# Working Papers

[www.cesifo.org/wp](http://www.cesifo.org/wp)

## Are the Spanish Long-Term Unemployed Unemployable?

Samuel Bentolila  
J. Ignacio García-Pérez  
Marcel Jansen

CESIFO WORKING PAPER NO. 6338

CATEGORY 4: LABOUR MARKETS

FEBRUARY 2017

*An electronic version of the paper may be downloaded*

- from the SSRN website: [www.SSRN.com](http://www.SSRN.com)
- from the RePEc website: [www.RePEc.org](http://www.RePEc.org)
- from the CESifo website: [www.CESifo-group.org/wp](http://www.CESifo-group.org/wp)

ISSN 2364-1428

# Are the Spanish Long-Term Unemployed Unemployable?

## Abstract

Long-term unemployment reached unprecedented levels in Spain in the wake of the Great Recession and it still affects around 57% of the unemployed. We document the sources that contributed to the rise in long-term unemployment and analyze its persistence using state-of-the-art duration models. We find pervasive evidence of negative duration dependence, while personal characteristics such as mature age, lack of experience, and entitlement to unemployment benefits are key to understand the cross-sectional differences in the incidence of long-term unemployment. The negative impact of low levels of skill and education is muted by the large share of temporary contracts, but once we restrict attention to employment spells lasting at least one month these factors also contribute to a higher risk of long-term unemployment. Surprisingly, workers from the construction sector do not fare worse than similar workers from other sectors. Finally, self-reported reservation wages are found to respond strongly to the cycle, but much less to individual unemployment duration. In view of these findings, we argue that active labour market policies should play a more prominent role in the fight against long-term unemployment while early activation should be used to curb inflows.

JEL-Codes: J630, J640, J650, C410.

Keywords: long-term unemployment, great recession, duration models, survival probability, Spain.

*Samuel Bentolila\**  
*CEMFI*  
*Casado del Alisal, 5*  
*Spain - 28014 Madrid*  
*bentolila@cemfi.es*

*J. Ignacio García-Pérez*  
*Universidad Pablo de Olavide & Fedea*  
*Spain - 28001 Madrid*  
*jigarper@upo.es*

*Marcel Jansen*  
*Universidad Autónoma de Madrid & Fedea*  
*Spain - 28049 Cantoblanco (Madrid)*  
*jansengiga@gmail.com*

\*corresponding author

25 January 2017

This is a revised version of the Presidential Address of the 40th Simposio de la Asociación Española de Economía delivered by the first author in Girona (December 2015). We are grateful to Manuel Arellano, Rolf Campos, Mario Izquierdo, Ernesto Villanueva, and seminar participants at the Banco de España, the European Central Bank, the International Labor Office, and the University of Edinburgh for comments, to Yolanda Rebollo-Sanz for help with the data set, and to Lucía Gorjón and Ingeborg Kukla for excellent research assistance. Bentolila thanks the Economics Department of Universidad Carlos III de Madrid for their hospitality. García-Pérez and Jansen gratefully acknowledge financial support from MINECO/FEDER (grants ECO2015-65408-R and ECO2015-69631-P).

# 1 Introduction

In the aftermath of the Great Recession, long-term unemployment reached unprecedented levels in Spain. At the worst moment during the crisis, 16% of the labor force and nearly two out of three (64%) unemployed persons had been searching for a job for over a year. Since that time, the situation in the labor market has improved considerably, with employment growing at a rate of around 2.3% per year since 2014, but the share of long-term unemployed is still 57%, while the share of unemployed with spells above two years is 42%.

The high incidence of long-term unemployment (LTU) entails a risk for social cohesion and it poses enormous challenges for policymakers. The probability of an exit from unemployment tends to fall with duration due to factors such as skill depreciation, loss of motivation, and discrimination on the part of employers. Moreover, health problems due to mental stress, the accumulation of debt or housing problems also tend to increase over time.<sup>1</sup> Reenfranchising the long-term unemployed therefore becomes progressively harder,<sup>2</sup> which creates a risk of social exclusion for the individual and of high structural unemployment for society at large. This state of affairs motivates our work. We start by documenting the factors that have contributed to the buildup of LTU and we subsequently perform an econometric analysis to quantify the impact of individual and aggregate determinants on the probability that an individual enters and exits LTU. The main objectives of our econometric analysis are to isolate the impact of unemployment duration on job-finding rates and to identify the population groups that are most vulnerable. Our empirical approach delivers reduced-form estimates, resulting from the interplay of labor demand and supply decisions, and hence do not have a causal interpretation. For this reason we also analyze the response of self-reported reservation wages to both unemployment duration and changes in aggregate labor market conditions.

The factors that account for the dismal performance of the Spanish labor market are well-known. Like many other European countries, Spain suffered two consecutive recessions, the 2008 international financial crisis and the Eurozone crisis, but in the Spanish case these external shocks were compounded by the bursting of a housing bubble and a large-scale banking crisis that led to a severe reduction in bank lending to firms (Jimeno and Santos 2014, Bentolila *et al.* 2016). The collapse of the construction sector alone added 1.7 million, mostly low-educated, workers to the ranks of the unemployed. Furthermore, all these shocks interacted with institutional factors, such as the dual nature of the Spanish labor market and a rigid system of collective bargaining, that resulted in high worker-turnover due to the massive destruction of temporary jobs and a slow adjustment of negotiated wages.<sup>3</sup> Here we take the shocks to the Spanish

---

<sup>1</sup>See Farré *et al.* (2015) for evidence on Spain and Winter-Ebmer (2016) for other countries.

<sup>2</sup>Hence the title of this article, which is inspired by Saint-Paul (1996).

<sup>3</sup>From 2010 to 2012, three consecutive labor market reforms introduced profound changes in the system collective bargaining but failed to address the problem of duality, see Bentolila *et al.* (2012) and García-Pérez and Jansen (2015).

economy as given and pursue an analysis of the mechanisms that generate the high degree of unemployment persistence that has fueled the buildup of LTU.

Our descriptive analysis in Section 3 is based on data from the Spanish Labor Force Survey. It reveals that LTU especially affects older and less educated workers. Nonetheless, even for prime-age male workers we obtain an LTU share close to 60%. Moreover, inspection of longitudinal data indicates a strong negative relationship between the average transition rate from unemployment to employment and the duration of the unemployment spells. A key objective of our empirical analysis is to assess to what degree this negative correlation reflects genuine duration dependence. This question is important because the same negative correlation could be the outcome of endogenous changes in the composition of the pool of unemployed due to dynamic selection. In the first case the low job-finding probabilities of the long-term unemployed are mainly a reflection of a lack of labor demand, while the alternative explanation of dynamic selection would point at the importance of supply-side factors, such as inadequate skills, that result in low job-finding rates from the very start of the unemployment spell.

In order to avoid the potentially confounding role of changes in worker characteristics, in Section 4 we estimate state-of-the-art duration models. To account for selection, we estimate similar models for the outflow from both employment and unemployment, and we allow for worker unobserved heterogeneity. To take into account the dual nature of the Spanish labor market, we model flows to and from temporary and permanent jobs. And, lastly, to properly capture the impact of the unemployment benefit system, we use workers' full employment history to measure their entitlement to contributory benefits. Most of these refinements are absent from the recent literature on long-term unemployment, as described in Section 2.

The estimation is performed using the Continuous Sample of Working Lives, which is a large sample of Social Security records. This data set allows us to capture short-term worker flows which are mostly missed by the LFS. On the other hand, this source does not allow us to distinguish between unemployment and nonparticipation, though we show that this is probably not an important shortcoming. In view of the fact that in Spain –like in other countries– the Great Recession reduced male significantly more than female employment, as well as to avoid standard sources of estimation bias, we limit our analysis to the population of native prime-age males.<sup>4</sup>

Our empirical results indicate that in Spain the conditional probability of entering LTU is very large and is significantly raised by receipt of unemployment benefits, mature age, low experience, and –especially once we mitigate the relevance of spells of less than one month– low education and low skill. In agreement with the recent literature on LTU in the US, we also find that duration dependence and not dynamic selection is the primary source of the low job-finding rates of the long-term unemployed.

Temporary contracts help to reduce the risk of LTU conditional on unemployment,

---

<sup>4</sup>The term “mancession” was named in The New York Times one of the buzzwords of 2009 (Leibovich and Barret 2009). Bentolila *et al.* (2017) presents evidence on female long-term unemployment in Spain.

but they also cause huge inflows into unemployment. For this reason, it is natural to ask whether temporary contracts are indeed a useful work-sharing arrangement during a crisis. A related question is whether short-duration contracts or placements have a noticeable impact on the subsequent employment prospects of the long-term unemployed or whether employers ignore these spells when assessing prospective employees. Here we take a first step towards answering the latter question by considering a model in which exits to spells lasting less than 30 days are treated as censored. Our estimates indicate that temporary jobs especially help specific groups of workers to leave unemployment, namely the least educated and experienced ones.

In Section 5 we conduct an exploratory analysis of reservation wages during the Great Recession with a different data source, the Spanish Survey of Family Finances. We find that self-reported reservation wages strongly adjust with the aggregate business cycle and also, though much less, with individual unemployment duration. In Section 6 we summarize our findings and argue that higher aggregate demand alone will not solve the LTU problem. Since Spain has a totally inadequate institutional setup to deal with LTU, expanding and, especially, improving active labor market policies, linking them to the receipt of unemployment benefits, and intensifying early activation, would be helpful measures. The Appendix includes further empirical results.

## 2 Literature review

Our work adds to a long literature on long-term unemployment in Europe. Overviews of work in this area as of the 1990s appear in Layard *et al.* (1991) and Machin and Manning (1999). Thereafter the incidence of LTU started to fall and so did the volume of academic work on this issue. However, the rise of LTU in the US in the aftermath of the Great Recession sparked an intense debate on the driving forces behind this phenomenon. In spite of their varying approaches, a common finding from existing studies is that the low exit rates of the long-term unemployed are due to negative duration dependence. On the contrary, changes in the pool of the unemployed due to dynamic selection play at best a modest role. Let us briefly review the literature that is closer to our analysis.

In a seminal study, Kroft *et al.* (2016) construct an augmented matching model to assess the relative role of composition effects, duration dependence, and transitions into nonparticipation in the buildup of LTU and the outward shift of the Beveridge curve in the US. These authors back out duration dependence from observed transition rates and show that it is one of the dominant forces at work, together with cyclical changes in nonparticipation.

In a related study, Krueger *et al.* (2014) analyze the role of unemployment duration on wages, reemployment chances, and labor force withdrawal. The structure of their paper is similar to ours, but these authors use logistic models to analyse how transition rates to employment and nonparticipation vary with duration. Unlike our case, the authors use data that allow a distinction between unemployment and nonparticipation,

but the logistic models that they use do not control for unobserved heterogeneity, a shortcoming which could significantly bias the estimates of duration dependence.

Our work is closest in spirit to Abraham *et al.* (2016), who use matched firm-worker data to estimate the impact of unemployment duration on subsequent employment outcomes. Their estimation technique compares the difference in pre- and post-employment shares for unemployed workers in seven different duration categories. This procedure allows the authors to control for time-invariant unobserved heterogeneity and for differences in prior employment. Nonetheless, there are relevant differences with our work. While we observe the entire working history of the individuals in our sample, Abraham *et al.* (2016) only consider the employment outcomes eight quarters before and after the measurement of unemployment. Moreover, their estimation technique is essentially a difference-in-differences estimator, while we use a duration model.

As stated in the Introduction, in our analysis we adapt duration estimation methods to address some of the problems that have been found in the previous literature, dealing as best we can with unobserved heterogeneity, state dependence, and self-selection. Recent work on LTU in the US does not treat the problem of selection into unemployment. In contrast we do so, by estimating a duration model for the probability of entering unemployment from employment, which depends on worker observed and unobserved characteristics. Since these characteristics also determine the probability of leaving unemployment, we estimate both duration models jointly.

We choose to employ duration models for two reasons. First, we have censored spells, for both employment and unemployment. Censoring cannot be dealt with using linear probability models, but ignoring censoring can lead to bias, since then the error term does not satisfy the standard properties in a regression model. Second, we wish to control for explanatory variables that change with duration, unemployment benefits in particular. To this end we need a duration model that takes into account the individual situation each month. In this vein, our study also belongs in the literature on the estimation of the determinants of the probability of leaving employment and unemployment.<sup>5</sup>

Lastly, here we also pay close attention to the dual structure of the labor market. Studying LTU in a dual labor market raises some interesting issues for understanding the determinants of long-term unemployment that, to the best of our knowledge, have not been addressed yet in the European literature.

### 3 The legacy of the Great Recession

In this section we provide several pieces of descriptive evidence on the nature of LTU in Spain based on the Labor Force Statistics (LFS). We begin by showing the unprece-

---

<sup>5</sup>For Spain, see for example García-Pérez (1997), Bover *et al.* (2002), Bover and Gómez (2004), García-Pérez and Muñoz-Bullón (2011), Arranz *et al.* (2010), Arranz and García-Serrano (2014), Carrasco and García-Pérez (2015), and Nagore and van Soest (2016b). Our work here especially builds on Rebollo and García-Pérez (2015).



Figure 1: Duration-specific unemployment rates in Spain, 1976Q3-2016Q3 (% of labor force)

Note: Recessions are shaded. Sources: INE, Encuesta de Población Activa and, for recession dates, Spanish Economic Association, Spanish Business Cycle Dating Committee.

denoted increase in LTU as a result of the Great Recession, we then discuss the incidence of LTU for different population groups, and we end with a review of the evolution of the main labor market flows during the crisis. Our discussion of the flows includes preliminary evidence on the existence of duration dependence and highlights the thin line between unemployment and nonparticipation.

### 3.1 The unprecedented rise in LTU

Figure 1 plots unemployment rates by duration, expressed as a share of the labor force, for the period between 1976 and 2016. The three lines represent, respectively, short-term unemployment (STU, up to one year), long-term unemployment between up to two years, and very long-term unemployment (VLTU), which refers to spells of two or more years. The shaded bars indicate recessions. Their purpose is to highlight the cumulative effect of the two recent recessionary periods, the first one unleashed by the financial crisis in the US after the fall of Lehman Brothers and the second one caused by the Eurozone crisis.

Inspection of Figure 1 shows that all three duration-specific unemployment rates reached record levels at distinct moments during the crisis. While STU peaked at the onset of the first recession, LTU continued to grow until the end of the second recession and VLTU peaked even later. At its peak, 10.6% of the Spanish labor force

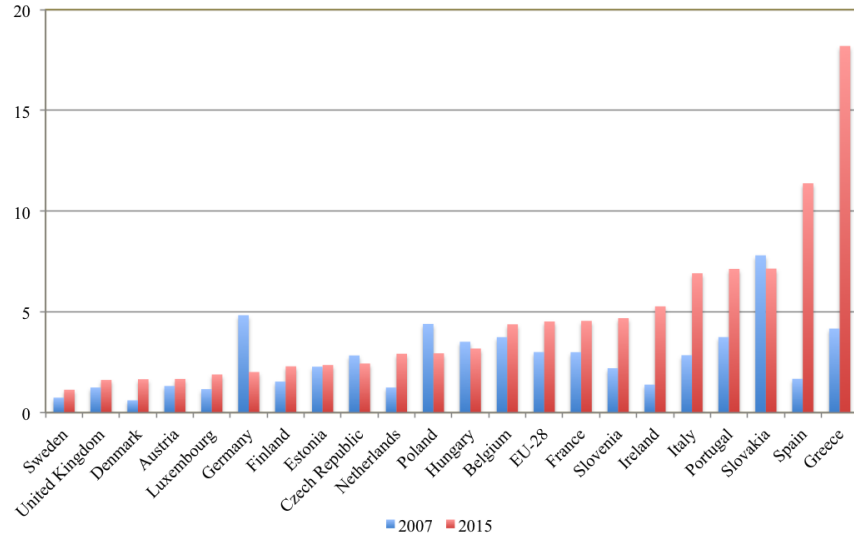


Figure 2: Long-term unemployment before and after the Great Recession in selected EU countries, 2007 and 2015 (% of labor force)

Source: OECD.Stat, Annual Labour Force Statistics.

was unemployed for more than two years. Since that time, the incidence of VLTU has dropped to a level of 7.9% in 2016Q3, but almost two-thirds of the people remaining in this group (63.4%) have been unemployed for at least four years.

The levels of LTU are not only striking from a historical perspective. Spain also stands out internationally, as is shown in Figure 2. In 2015, its LTU rate (11.4%) was the second-highest in the EU, exceeding the EU average by almost 7 percentage points.<sup>6</sup> Interestingly, four out of the six EU member states with the highest LTU rates participated in an EU-sponsored bailout program. This evidence points at the importance of the deep and prolonged contraction of aggregate demand in these countries as one of the main drivers of the rise in LTU. Moreover, Greece, Italy, Portugal, and Spain –as well as France– are countries with dual labor markets that entered the crisis with a rigid system of collective bargaining. These institutional features and the resulting delay in wage adjustment also seem to have played an essential role in the buildup of LTU in these countries (Bentolila and Jansen 2016).

Next, returning to the case of Spain, we observe a considerable degree of cross-sectional variation in the incidence of LTU. In most cases there exists a strong correlation between the rise in STU and LTU by demographic group. However, changes in nonparticipation and shifts in the distribution of labor demand also play a role. By way

<sup>6</sup>Notice that Eurostat reports lower figures for the incidence of LTU than the Spanish Statistical Institute (INE), as it uses a different definition. Eurostat measures the length of unemployment spells as the period since the end of a person’s last job. INE, on the contrary, exploits information on search duration.



of illustration, Table 1 provides a breakdown of the changes in labor force participation, employment, and unemployment for different worker characteristics. Besides the standard unemployment rate, the table also reports cohort-specific LTU shares. The latter are defined as the proportion of long-term unemployed among the unemployed in each group. The LTU shares provide a proxy for the conditional probability that an unemployed worker in each of the groups ends up in LTU.

The reported data confirm a number of well-known facts. The drop in employment rates affected men more than women, and was strongly concentrated among youth, low-educated workers with at most mandatory education, and immigrants. In 2016 the same cohorts also present the highest LTU rates as a share of the labor force (not shown),<sup>7</sup> but in the cases of youth and immigrants these high LTU rates are mostly driven by the relatively high inflow into unemployment. Indeed, both groups of workers have below-average LTU shares. While 59.8% of the unemployed in our reference period were long-term unemployed, this figure is reduced to 40.2% in the case of youth and to 55.9% for non-natives. On the contrary, LTU shares are all close to 60% for the remaining demographic groups. This uniformity is a striking finding that highlights the widespread nature of LTU in Spain. College education seems to provide some protection against the risk of LTU, but the difference between the LTU share of college-educated workers and those with at most primary education is equal to only 8 percentage points (pp). Similarly, even for prime-age workers we obtain an LTU share of 59%.

Finally, older unemployed workers clearly seem to be the most vulnerable group. They face a relatively low risk of unemployment, but more than two-thirds of the unemployed in the age bracket from 45 to 54 years old are long-term unemployed, and for those who are 55 and older this share is a staggering 77.6%. Given these comparatively high LTU shares, one might have expected a rise in nonparticipation for this group, but the reverse is true. Between 2007 and 2016 the labor force participation rate of the oldest cohort increased by 10.3 pp from 45 to 55.3%. Some part of the increase in the LTU rate of the oldest workers may therefore be driven by a drop in the transition rate to nonparticipation. Two other cohorts for which we observe marked changes in participation rates during the crisis are youth and women. In our econometric analysis below we avoid the potentially confounding role of these changes in participation rates by restricting the analysis to males aged 25 to 54 years old.

### 3.2 The role of mismatch and composition effects

Apart from the drop in aggregate labor demand, the economic crisis has also induced profound shifts in the relative demand for skills and the distribution of employment by industry. The two major shifts are the fall in the demand for low-educated workers and the collapse of the construction sector. In 2007 the construction sector accounted for 13% of total employment and nine years later this share had fallen to 6%. In absolute terms, the collapse of the construction sector caused a maximum loss of 1.74 million,

---

<sup>7</sup>Notice that cohort-specific LTU rates can be computed as the product of cohort-specific unemployment rates and LTU shares.

Table 1: Participation, employment, and unemployment rates, and LTU share before and after the Great Recession in Spain, 2007Q2-2016Q2 (%)

	Participation rate		Employment rate		Unemployment rate		LTU share	
	2007Q2	2016Q2	2007Q2	2016Q2	2007Q2	2016Q2	2007Q2	2016Q2
Total	72.1	74.6	66.4	59.6	8.0	20.0	27.8	59.8
Gender								
Male	82.0	79.6	76.9	64.9	6.2	18.5	24.1	58.0
Female	62.0	69.5	55.5	54.3	10.4	21.9	30.8	61.5
Age								
16-24 years old	52.4	37.3	42.9	20.0	18.1	46.5	16.0	40.2
25-34 years old	86.6	87.7	80.1	68.0	7.5	22.4	24.9	56.1
35-49 years old	84.5	90.5	78.8	75.4	6.7	16.8	27.2	58.8
45-54 years old	76.8	84.5	72.1	69.9	6.1	17.3	39.1	67.9
55-64 years old	45.0	55.3	42.4	46.0	5.7	16.9	55.6	77.6
Education								
Primary	53.5	54.3	47.8	35.2	10.6	35.2	33.0	65.2
Secondary, 1st stage	70.9	69.6	64.1	51.0	9.6	26.8	26.5	62.0
Secondary, 2nd stage	74.3	72.6	68.3	58.1	8.0	20.0	26.3	55.7
College	85.3	88.0	80.8	77.7	5.3	11.7	26.3	56.7
Nationality								
Native	57.1	57.4	52.9	47.1	7.3	17.9	31.3	60.8
Foreign	76.2	73.2	67.2	55.1	11.9	24.8	15.2	55.9

Note: Data are shares of source population. Source: INE, Encuesta de Población Activa.

mostly low-skilled jobs during the crisis, but this is not the whole picture.<sup>8</sup> From peak to trough Spain lost three million jobs that were previously occupied by workers with no more than compulsory education. Moreover, the sharp drop in the employment of low-educated workers contrasts with a slight increase in the employment of university graduates.

A straightforward procedure to illustrate the degree of mismatch between the demand and supply of labor and to gauge its importance for the buildup of LTU is to compare the characteristics of the pool of employed and unemployed workers. The former provides an approximation to labor demand while the composition of the pool of unemployed workers provides a proxy for the characteristics of labor supply. Once again we distinguish between STU, LTU, and VLTU. Moreover, in addition to the personal characteristics listed before, in Table 2 we also provide a breakdown by the industry of the unemployed workers' previous occupation. This decomposition, unavailable from the LFS, is computed from the administrative records of the Muestra Continua de Vidas Laborales (see Section 4.2), while the rest of the data are computed using data from the Spanish LFS.

Our main interest concerns the groups of workers that are more prominent among the unemployed than among the employed. Careful inspection of the data shows that this is the case for youth, immigrants, low-educated individuals –i.e., those without completed upper-secondary education– and workers from the construction sector. For the latter two groups the degree of mismatch is increasing roughly monotonically with unemployment duration, while the opposite is true for youth and immigrants. For example, the construction sector currently accounts for 6.1% of employment and the workers from this sector represent 11.3% of the short-term unemployed and 19.3% of the very long-term unemployed, while the corresponding figures for individuals with primary education are, respectively, 6.6%, 12.4%, and 16.4%. The individuals who belong to these two groups therefore face both an above-average probability of entering unemployment and a comparatively high conditional probability of ending up in VLTU.

By contrast, youth and immigrants enter unemployment more frequently than the average worker, but they also exit unemployment more quickly. The latter explains why their share in the pool of unemployed is negatively related to duration. Finally, workers above 45 years of age make up a comparatively small share of the short-run unemployed and a comparatively large share of the long-term unemployed, and this share is increasing with duration. In other words, relatively few older workers become unemployed, but those who do so face a high conditional probability of ending up in VLTU.

The relatively strong concentration of disadvantaged workers among the unemployed with spells longer than two years poses a challenge to policymakers. Our analysis below indicates that these workers have very low job-finding rates, which have barely improved in recent times. Nonetheless, the contribution of composition effects to the buildup of

---

<sup>8</sup>This calculation is based on data from the Spanish Labor Force Survey and takes 2008Q1 as the reference period. The breakdown of employment by industry is not consistent before this date.

Table 2: Employment and unemployment breakdown by duration and population group in Spain, 2016Q2 (%)

	Employed	Unemployed		
		Short-term	Long-term	Very long-term
Gender				
Male	54.5	51.3	45.8	48.5
Female	45.5	48.7	54.2	51.5
Age				
16-24 years old	4.4	22.5	18.4	7.0
25-34 years old	20.7	26.0	27.4	20.8
35-44 years old	31.9	26.1	23.7	25.8
45-54 years old	27.5	18.3	19.9	28.2
55-64 years old	15.5	7.0	10.6	18.2
Education				
Primary	6.6	12.4	12.5	16.4
Secondary, 1st stage	27.4	37.6	37.2	42.6
Secondary, 2nd stage	23.9	26.1	23.3	21.5
College	42.1	23.8	26.9	19.5
Industry of previous job				
Primary	4.1	0.1	3.6	3.0
Manufacturing	14.0	8.6	9.7	13.5
Construction	6.1	11.3	9.2	19.3
Wholesale and retail trade	16.6	16.3	16.4	14.5
Finance and real state	3.1	1.5	1.9	1.7
Professional and business services	20.5	24.7	19.0	20.5
Education	6.7	3.5	4.1	3.0
Health care	8.1	5.5	5.4	4.6
Leisure and hospitality	7.8	16.5	13.1	4.4
Scientists, artists and other	13.0	12.0	17.6	15.5

Note: The breakdown by industry corresponds to 2015. Columns add up to 100 by characteristic. Sources: INE, Encuesta de Población Activa and for industry breakdown Ministerio de Empleo y Seguridad Social, Encuesta Continua de Vidas Laborales. Short-term denotes unemployment for up to one year, long-term between one and two years, and very-long term for more than two years.

the current stock of long-term unemployed seems to have been modest compared to the contribution of the strong rise in the disaggregated LTU shares for most cohorts. In Bentolila *et al.* (2017) we construct a counterfactual series for the overall LTU share in which the weights of different groups (formed by crossing age, gender, education, and nationality) in unemployment are allowed to change in accordance with the actual data, while the group-specific LTU shares are fixed at their pre-crisis values in 2008Q3. By construction, the counterfactual LTU shares for the reference period coincide with the pre-crisis minimum of the actual LTU shares. While this is a rough exercise that excludes the role of time-varying industry shares, it is telling that it indicates that composition effects account for only 10% of the increase in the LTU share from 2008Q3 to 2016Q2.

### 3.3 Labor market flows during the crisis

In the previous sections we have provided evidence on the evolution of the stocks of employed (E), unemployed (U), and non-participating (N) workers. The purpose of this section is to describe the evolution of the flows among these states. To be consistent with the empirical analysis in the next section, we distinguish between permanent and temporary jobs and we restrict our sample to male prime-age workers (25-54 years old). We use aggregates constructed from LFS longitudinal panel data using population weights and measured as three-quarter centered moving averages, so as to reduce seasonal volatility.

We begin with the initial impulse to the rise in unemployment, i.e. the increase in the transition rates between employment and unemployment at the onset of the two recent recessions. In the left-hand panel of Figure 3 we observe a sharp increase in the termination of temporary jobs at the start of the first recession and another jump in the second recession. The spikes in dismissals of permanent workers are even more apparent in the right-hand panel, though it should be noted that the separation rate of permanent jobs is almost a factor of magnitude smaller than the one for temporary jobs. Overall, between 2008 and 2013, the quarterly transition rate between temporary employment and unemployment more than doubled –and even today it is still substantially higher than in 2008. By contrast, the transition rate between permanent employment and unemployment is currently close to its pre-crisis level.

Our next figure depicts the transition rates in the opposite direction, namely between unemployment and employment, on either permanent or temporary jobs. Both transition rates fell dramatically during the crisis and are still far below their pre-crisis levels. In the case of temporary jobs the average quarterly transition rate fell by almost 20 pp, from a pre-crisis level of around 32% to a minimum of 12%, and its current level lies around 17%. The quarterly transition rate between unemployment and permanent employment follows a similar pattern, but once again the rates are almost an order of magnitude smaller than in the case of temporary employment. Before the crisis, around 5% of unemployed males managed to transit from unemployment to a permanent job within a quarter, while currently only close to 2% do. The above-mentioned rates are

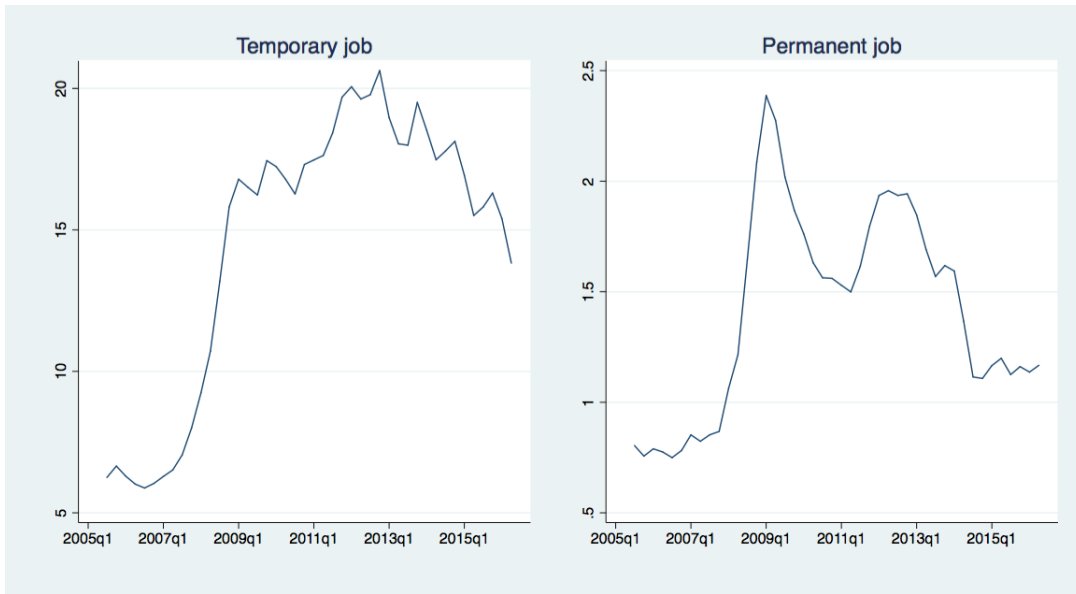


Figure 3: Quarterly flow rates into unemployment by contract type in Spain, 2005Q3-2016Q2 (%)

Note: Rates are computed with respect to the reference population in the preceding quarter. Source: INE, Encuesta de Población Activa.

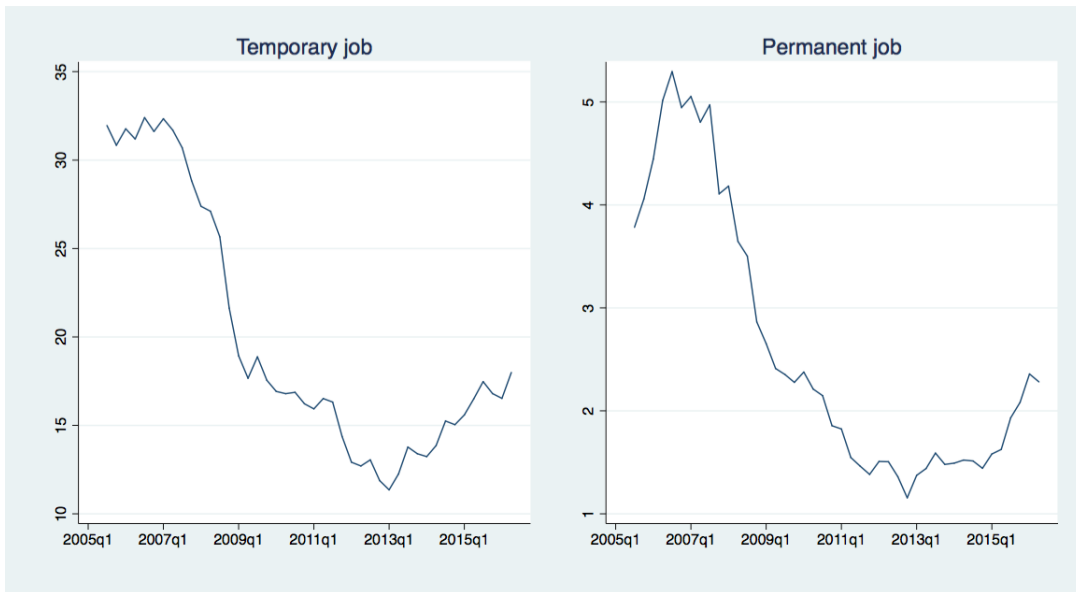


Figure 4: Quarterly flow rates into employment by contract type in Spain, 2005Q3-2016Q2 (%)

Note: Rates are computed with respect to the reference population in the preceding quarter. Source: INE, Encuesta de Población Activa.

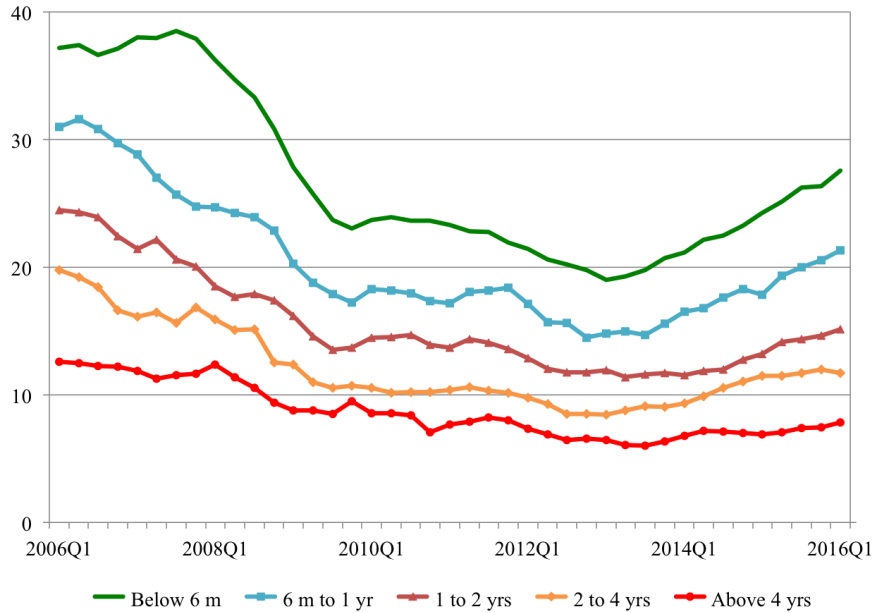


Figure 5: Unemployment duration-specific transitions to employment in Spain, 2006Q1-2016Q1 (%)

Source: INE, Encuesta de Población Activa.

averages and do not account for changes in the pool of unemployed, but they provide an indication of the dramatic increase in the average length of unemployment spells and thereby the risk of LTU during the crisis.

In view of our focus on LTU, it is also worth checking whether the flow rate from unemployment to employment falls with duration. To this aim, Figure 5 represents quarterly exit rates to employment according to the duration of unemployment. There is a clear gradient, with the exit rate falling with the spell length. And the differences are huge: at the end of the expansion around 37% of workers who had been unemployed for up to 6 months left within a quarter, whereas only 14% of those who had been unemployed for 4 years or more did so. During the recession all exit rates fell, but differences across duration groups shrank significantly. Then, when the recovery arrived, differences widened again, with the exit rates of the long-term unemployed increasing by less than those of the short-term unemployed, a situation which has reinforced their chances of remaining stuck in unemployment. This is *prima facie* evidence of the presence of duration dependence, but at this stage we cannot exclude the alternative explanation of dynamic selection. Namely, that over time the composition of the pool of the unemployed may worsen as the most employable workers leave first and this process of selection also generates a negative relationship between the average job-finding rate and duration. We address this issue rigorously in Section 4.

The foregoing evidence highlights the dramatic changes that took place during the

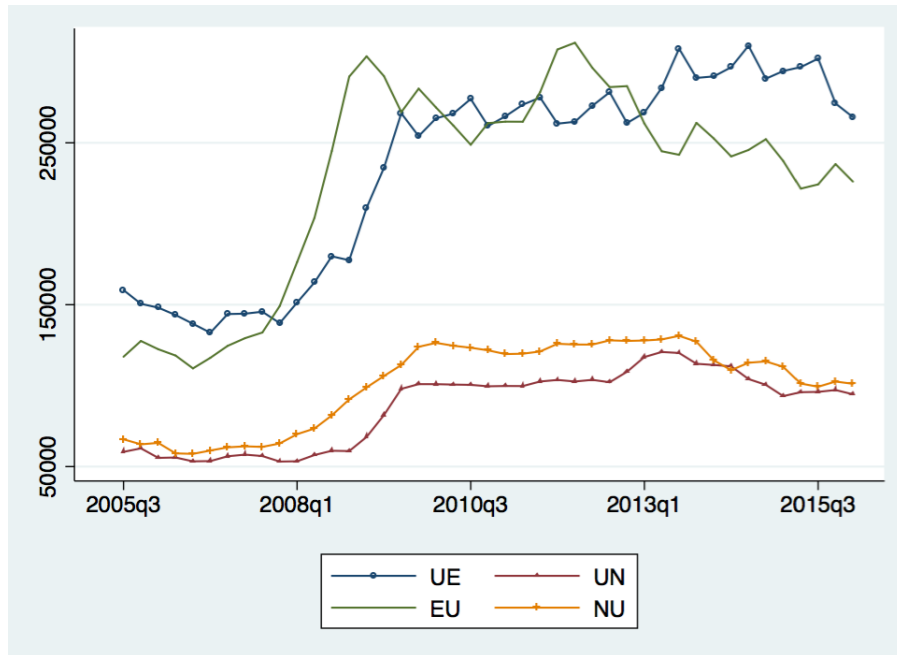


Figure 6: Quarterly flows to/from unemployment in Spain, 2005Q3-2016Q1 (persons)

Note: E, employment; U, unemployment; and N, nonparticipation. Source: INE, Encuesta de Población Activa.

crisis in the flows between employment and unemployment. It also reveals the overwhelming dominance of temporary jobs vis-à-vis permanent jobs in labor market flows, as well as a clear deterioration in the quality of new jobs. Now an even larger share of the newly created jobs are temporary and these jobs last less than before the crisis. It is important to take this aspect into account, because it is not clear *a priori* to what degree relatively short-duration temporary jobs may help a long-term unemployed person to restore their working career after several years in unemployment.<sup>9</sup>

Another relevant issue relates to the transitions into and out of nonparticipation. The participation rates of prime age males are fairly constant during the crisis. Nonetheless, these net rates hide frequent movements into and out of nonparticipation. Figure 6 depicts absolute gross flows to and from unemployment from 2005 to 2016. It is apparent that the recession brought about a very large jump in absolute flows between employment and unemployment, but also that many people enter or leave nonparticipation from one quarter to the next. These flows are equivalent to at least one-third of those between employment and unemployment. According to LFS definitions, workers are considered to be employed if they have worked for at least one hour in the survey reference week, unemployed if they are not employed, they have searched for a job during the previous month, and they are also available to start work within two weeks,

<sup>9</sup>Nagore and van Soest (2016a) analyze the change in the behavior of labor market flows during the crisis using the Spanish Social Security data.



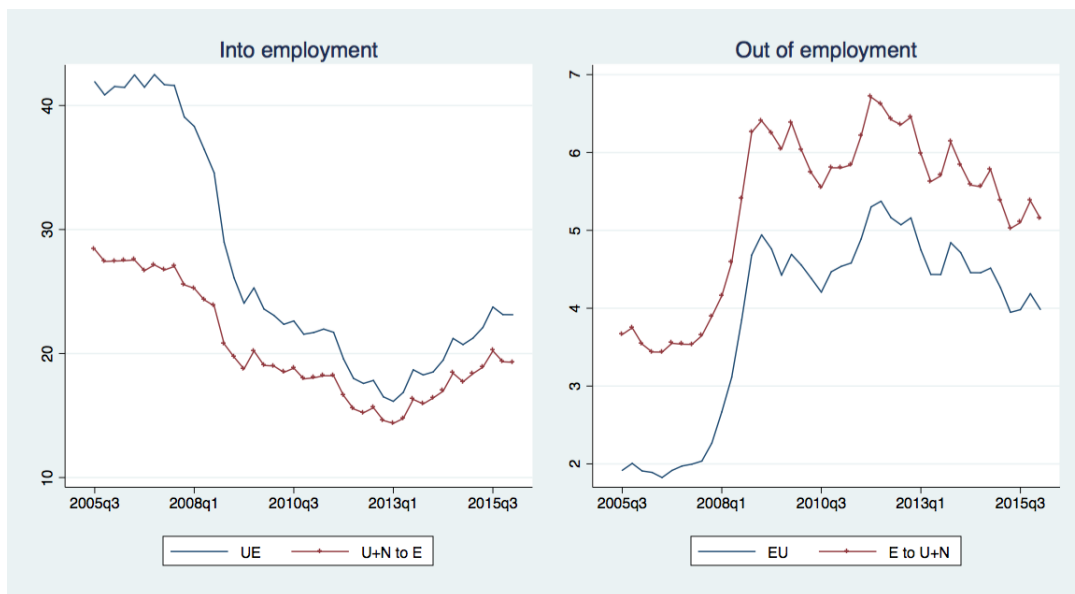


Figure 7: Quarterly flow rates into employment and unemployment in Spain, 2005Q3-2016Q3 (%)

Note: Rates are computed with respect to the reference population in the preceding quarter. Source: INE, Encuesta de Población Activa.

and nonparticipants otherwise. These definitions reveal that the dividing line between unemployment and nonparticipation is quite permeable. People without a job who stop searching for one quarter go from unemployment to nonparticipation, but if they look for work again in the following quarters they will go through the reverse transition. These transient flows are frequent, indicating that nonparticipation is not necessarily persistent, especially within this age bracket. Thus, as has been pointed out for the US by Elsby *et al.* (2015), flows involving nonparticipation can be a crucial element in explaining the dynamics of unemployment.

In view of this finding –and also due to data limitations– in Section 4 we study the transitions between nonemployment and employment. It is therefore worth checking their cyclical behavior vis-à-vis the traditional ones involving unemployment rather than nonemployment. These are represented in Figure 7, where the left panel depicts the employment inflow rates and the right panel the employment outflow rates. It is apparent that the transition rates from and to nonemployment follow similar patterns as the traditional transition rates between employment and unemployment.

## 4 What affects the probability of entering and leaving LTU?

This section presents our empirical results on the probability of entering and exiting LTU. Our key goal is to estimate the impact of individual characteristics and duration dependence on the profile of the job-finding rates of the long-term unemployed. Throughout the analysis we control for unobserved heterogeneity to avoid potential bias due to selection on unobservables. We begin this section by explaining our empirical approach, we then move on to describe the key characteristics of the sample, and we end the section with a discussion of our main estimation results.

### 4.1 Empirical approach

We assume that individuals move between two mutually exclusive states, employment and unemployment (or, more rigorously, nonemployment). Furthermore, in view of the dual nature of the Spanish labor market, we distinguish between temporary and permanent, or open-ended, employment. And, since we are interested in analyzing the transitions between these labor states, our empirical model will consider the joint estimation of the exit or hazard rates out of both employment and unemployment.

We specify these hazard rates using a discrete-time duration model (Jenkins 1995), which are given by the following conditional probability:

$$h(t) = \Pr(T = t \mid T \geq t)$$

where  $T$  is a discrete random variable denoting either employment or unemployment duration. The hazard  $h(t)$  therefore measures the probability of a transition for a person who has remained in the same state for exactly  $t$  periods. We also allow for multiple destinations from each state, i.e. we employ a competing risks model for each state (Lancaster 1990).

Our framework is similar to the one in Carrasco and García-Pérez (2015) and very close to that in Rebollo and García-Pérez (2015). The hazard rate of unemployed individuals depends on unemployment duration,  $t$ , and on a vector of variables  $x(t)$  that includes a set of individual, sectoral, and aggregate variables described below. It also depends on the person's unemployment benefit entitlement, which is captured by two variables. The first one is a dummy variable,  $b(t)$ , that takes the value one when the worker is receiving an unemployment subsidy in period  $t$ . The second one is a discrete variable  $e(t)$  that captures the remaining months of entitlement for persons who are eligible to contribution-based unemployment benefits and are receiving them. These two benefits variables and some variables in  $x(t)$  are allowed to have heterogeneous effects over the unemployment spell through their time-varying coefficients,  $\alpha_i(t)$ , which feature an interaction with log duration. In the case of  $e(t)$  this is modelled by allowing  $\alpha_3(t)$  to be a cubic polynomial in log duration.<sup>10</sup> Accordingly, the unemployment hazard

---

<sup>10</sup>This is a departure from Rebollo and García-Pérez (2015), who assume linearity.

rate has the following structure:

$$h_u^j(t) = \Pr(T_u = t \mid T_u \geq t, x(t), b(t), e(t), \eta^u) = F(\alpha_0^j(t) + \alpha_1^j(t)x(t) + \alpha_2^j(t)b(t) + \alpha_3^j(t)e(t) + \eta^u)$$

where  $j = e_T, e_P$  denotes, respectively, the two alternative exits from unemployment, i.e. employment with a temporary contract and with a permanent contract, as in Bover and Gómez (2004). The last term in the formula captures time-invariant unobserved heterogeneity and is discussed below.

The exit from employment is also estimated using a competing risks model and all coefficients in these hazard rates are allowed to differ between temporary and permanent employees. The two competing risks for employed workers are moving to another job,  $e$ , without going through unemployment, and moving to unemployment,  $u$ . Hence, the employment hazard rate has the following specification:

$$h_e^k(t) = \Pr(T_e = t \mid T_e \geq t, x(t), \eta^e) = F(\beta_0^k(t) + \beta_1^k(t)x(t) + \eta^e)$$

where  $k = e, u$ . This hazard rate is simpler than the one in Rebollo and García-Pérez (2015), where it also depends on previous receipt of unemployment benefits. The variables in  $x(t)$  are the same as in the unemployment hazard.

Following Bover *et al.* (2002) and García-Pérez and Muñoz-Bullón (2011), we use a logistic distribution to model all hazard rates.<sup>11</sup> Moreover, as we are considering competing risks models for both employment and unemployment, exit from a given state needs to be specified as a multinomial logit model with two alternative risks for each state:

$$h_u(t) = h_u^{e_T}(t) + h_u^{e_P}(t)$$

$$h_e(t) = h_e^e(t) + h_e^u(t)$$

Lastly, in order to avoid spurious duration dependence in the hazard rate generated by the presence of unobserved factors (van den Berg 2001), we control for unobserved heterogeneity affecting the flows both to and from unemployment. This is captured by the terms  $\eta^u$  and  $\eta^e$  in the expressions for the hazards. We exploit the fact that we observe multiple spells for the same individual and we estimate the unemployment and employment hazard rates simultaneously, assuming that unobserved heterogeneity follows a discrete distribution function with different mass points, as in Heckman and Singer (1984). In particular, we allow a four-mass-point distribution function, namely two different points for each state,  $\eta_1^u$  and  $\eta_2^u$  for unemployment, and  $\eta_1^e$  and  $\eta_2^e$  for employment, so that four different types may emerge with joint probabilities, namely:

---

<sup>11</sup>We could have alternatively used the extreme value distribution. As explained in van den Berg (2001), this distribution allows the model to verify the mixed proportional hazard assumption. Our approach departs from the proportionality assumption, at the cost of imposing more structure, because we want to allow the potential impact of duration and of both observed and unobserved heterogeneity on the exit from employment and unemployment not to be proportional.

$(\eta_1^u, \eta_1^e)$ ,  $(\eta_1^u, \eta_2^u)$ ,  $(\eta_2^u, \eta_1^e)$ , and  $(\eta_2^u, \eta_2^e)$ . Standard errors for the estimated coefficients are computed using the delta method. The existence of repeated employment and unemployment spells and, more importantly, of some time-varying covariates allows non-parametric identification (Abbring and van den Berg 2004, Gaure *et al.* 2007).

Before presenting the results it is worth noting that our empirical approach only yields reduced-form estimates, resulting from the interplay of labor demand and supply, so that they do not have a causal interpretation. They are nevertheless informative on the characteristics which are associated with a higher risk of LTU.

## 4.2 The sample and the set of control variables

Our initial data set is a 20% random sample of the prime age males aged 25 to 54 whose records appear in the nine waves of the Continuous Sample of Working Lives (Muestra Continua de Vidas Laborales or MCVL) corresponding to the years 2006-2014. All individuals must have experienced at least one spell of nonemployment between 2001 and 2014. Individuals only appear in the records when they pay Social Security contributions –roughly, if they are either employed or nonemployed and receiving unemployment benefits. No information about job search activity is available in the data set, hence we cannot distinguish between unemployed and nonparticipating individuals. Moreover, nonemployed individuals drop out of the records if they stop receiving benefits. This is however not a problem, since the length of completed spells of nonemployment can be reconstructed using the information on the subsequent job. Furthermore, to exclude persistent nonparticipants, we limit nonemployment duration to three years, after which spells are treated as censored. With this caveat in mind, as already indicated, we take the license of referring to individuals without employment as unemployed rather than nonemployed individuals.

Against this potential drawback, the MCVL data have crucial advantages vis-à-vis the flow data from the LFS. They allow us to follow workers since the start of their working careers –whereas the LFS only follows individuals for six quarters– and they have a daily frequency, which permits the observation of all employment spells –while many labor market transitions are missed in the LFS due to its quarterly frequency. We can also construct a worker’s entitlement to benefits from the MCVL, whereas the LFS only allows us to know whether the worker is receiving benefits or not. By contrast, using this data source implies that we lose information on people living in the same household as the unemployed worker, which is available in the LFS.

In order to avoid problems concerning attrition, we only analyze employment spells in the general Social Security regime, thus excluding special regimes such as agriculture, public employment, and self-employment, and treat exits from unemployment to these states as right-censored (García-Pérez 2008). Moreover, in the case of workers who are recalled to the same firm, a feature which has become increasingly important in Spain (Arranz and García-Serrano 2014), we only consider intervening unemployment spells lasting more than 30 days.<sup>12</sup> Lastly, to maximize the probability of observing

---

<sup>12</sup>Accordingly, two employment spells with the same firm which have an intervening unemployment

the individual’s complete work history, we exclude both immigrants and people who appear for the first time in the sample being 30 years old or older (who may have an unrecorded work history).

Our set of control variables includes both individual characteristics and aggregate variables. The former comprise: (a) Age, grouped into three ten-year intervals. (b) Education, measured by dummy variables for the highest degree attained.<sup>13</sup> (c) Skill, divided into high, medium, and low, computed from grouped Social Security tax categories.<sup>14</sup> (d) Actual experience, measured by the number of months employed divided by the number of months of potential experience (i.e. those elapsed since the person entered the labor market). (e) A dummy that captures whether the worker was fired from his previous job. And (f) our controls for benefit entitlement. As explained before, entitlement to contributory benefits is measured by the remaining months of entitlement in each month (Meyer 1990). The latter is computed from each individual’s employment and insurance claim history (since residual benefits not claimed in one unemployment spell can be claimed in a later spell).<sup>15</sup> This entitlement is entered as a cubic polynomial in order to capture nonlinear effects.

The aggregate variables included in the model are as follows: (a) Employment growth, defined as the monthly growth rate of the number of employees by province. (b) The quarterly national unemployment rate. (c) 17 region dummies. (d) 6 industry dummies. (e) 12 monthly dummies. And (f) two step dummy variables for the labor reforms in June 2010 and February 2012, that take the value one from those dates onwards.

Finally, the following variables are interacted with log duration: age, education, skill, unemployment insurance (linear and quadratic), unemployment assistance, employment growth, national unemployment rate, and industry. In an extension we also interact the type of contract (see below).

### 4.3 Descriptive statistics

Table 3 shows the main characteristics of workers in the sample when they enter unemployment, separately for the expansion (2001-2007) and the recession (2008-2014). It should be stressed that they correspond to workers involved in inflows rather than

---

spell lasting less than 30 days are treated as a single employment spell.

<sup>13</sup>The data on educational attainment in the MCVL is officially revised using information from the Spanish Continuous Census of Population (Padrón Continuo). It has however been improved since 2009 with data from the Ministry of Education, and so we use the latter information, imputing it backwards (see De la Roca and Puga 2016, footnote 7).

<sup>14</sup>High skill includes college and junior college graduates, and top and middle managers (groups 1 to 6 in the Social Security classification), medium skill includes administrative assistants and so-called first- and second-level officers (groups 7 and 8), and low skill includes third-level officers and unskilled workers (groups 9 and 10), see García-Pérez (1997).

<sup>15</sup>Workers having access to two different sets of benefit entitlements must choose between them. We assume that they choose the one with the higher length. For more information see Rebollo and García-Pérez (2015).

Table 3: Descriptive statistics of worker characteristics, 2001-2014 (%)

	Expansion		Recession	
	Mean	St. dev.	Mean	St. dev.
Age				
25-34 years old	88.3	(32.2)	60.7	(48.8)
35-49 years old	10.7	(30.9)	35.6	(47.9)
45-54 years old	1.0	(10.1)	3.7	(19.0)
Education				
Primary or less	11.9	(32.3)	13.5	(34.2)
Secondary, 1st stage	48.7	(50.0)	51.0	(50.0)
Secondary, 2nd stage	25.3	(43.5)	23.2	(42.2)
College	14.2	(34.9)	12.3	(32.8)
Skill				
High	31.1	(46.3)	41.4	(49.3)
Low	24.7	(43.1)	11.6	(32.0)
Medium	44.2	(49.7)	47.0	(49.9)
Experience				
Fraction of potential	76.9	(25.7)	77.3	(24.6)
Dismissal from previous job				
Dismissed	80.8	(39.4)	91.5	(27.9)
Not dismissed	19.2	(39.4)	8.5	(27.9)
Industry of previous job				
Manufacturing	13.6	(34.2)	12.7	(33.3)
Construction	29.6	(45.7)	25.7	(43.7)
Non-market services	7.5	(26.3)	9.5	(29.3)
Trade	11.4	(31.7)	11.5	(31.8)
Hospitality	9.1	(28.8)	11.4	(31.8)
Other services	28.9	(45.3)	29.3	(45.5)
Unemployment benefits				
Contributory	26.2	(44.0)	29.0	(45.4)
Assistance	17.7	(38.2)	35.6	(47.9)
No benefits	56.1	(49.6)	35.3	(47.8)
Previous job contract type				
Permanent	16.4	(37.0)	20.3	(40.3)
Temporary	83.6	(37.0)	79.7	(40.3)
Number of spells	37,399		62,045	

Note: The sample is made up of males aged 25-54 years old. The expansion corresponds to the period 2001-2007 and the recession to 2008-2014. The characteristics correspond to individuals in their first month in unemployment. Columns add up to 100 by characteristic.

Table 4: Unemployment duration, benefit duration, and raw hazard rates

	Expansion	Recession
<b>A. Unemployment duration (months)</b>		
Exit to a temporary job		
Median	3.0	4.0
Third quartile	6.0	8.0
Mean	4.5	6.3
Share of spells (%)	76.6	69.9
Exit to a permanent job		
Median	3.0	4.0
Third quartile	6.0	8.0
Mean	5.1	6.2
Share of spells (%)	7.9	8.1
Censored spells		
Median	5.0	8.0
Third quartile	11.0	16.0
Mean	7.6	10.7
Share of spells (%)	15.5	22.0
<b>B. Unemployment benefit duration (months)</b>		
All		
Median	7.0	10.0
Mean	9.8	11.2
Temporary previous job		
Median	6.0	8.0
Mean	8.9	10.0
Permanent previous job:		
Median	16.0	20.0
Mean	15.6	16.8
<b>C. Hazard rates out of unemployment (%)</b>		
Exit to a temporary job		
No benefits	16.9	9.3
Contributory benefits	9.7	7.2
Assistance benefits	11.3	7.9
Exit to a permanent job		
No benefits	1.6	1.0
Contributory benefits	1.3	1.2
Assistance benefits	1.2	0.7
Number of spells	37,399	62,045

Note: The sample is made up of males aged 25-54 years old. The expansion corresponds to the period 2001-2007 and the recession to 2008-2014. Shares of spells add to 100 by column.

to worker stocks. The majority are younger than 35 years old, have completed at most compulsory secondary education, and enter unemployment from a temporary job. These facts confirm our previous remarks regarding Table 1, which is based on LFS data. The education breakdown matches well the skill structure measured via occupations. In the expansion, close to one-half of the unemployed do not qualify for benefits. There are sizeable changes in the composition of inflows from expansion to recession, with workers becoming on average younger and less educated. They are also more likely to have been dismissed (as quits fall) and to come from permanent jobs. Accordingly, they are more likely to be entitled to unemployment benefits. The share of construction workers falls, which is unexpected, but simply reflects a reduction in turnover in that industry, given the scarcity of new jobs.<sup>16</sup>

Next, Table 4 presents some descriptive statistics of spells. The vast majority (91%) of non-censored exits from unemployment are to temporary jobs, but the average length is similar for spells ending in both types of contracts.<sup>17</sup> Completed spells are quite lengthy, around 5 months on average in the expansion and 6 months in the recession, though –as shown for the third quartile– they are much lengthier in the upper part of the distribution. Moreover, the recession is characterized by a strong rise in both the share and the duration of censored spells. Average benefit entitlement periods last 10-11 months, but they are much smaller for workers coming from temporary jobs than from permanent jobs, for whom the mean is around 17 months in the recession. Lastly, average monthly hazard rates from unemployment to permanent jobs are around one-tenth of those to temporary jobs and they are typically smaller for workers who receive unemployment benefits.

## 4.4 Baseline empirical results

We now present our estimation results. In order to save space, we restrict our attention to the hazard of leaving unemployment (the estimates for the hazard of leaving employment are reported in Bentolila *et al.* 2017).

### 4.4.1 Hazards

The hazard rate for the recession is shown in Figure 8. It corresponds to a hypothetical individual with the average characteristics in our sample and it takes into account all interactions between these characteristics and duration. The underlying estimated coefficients are reported in Appendix Table A.1.

The decay in the average hazard rate provides our best estimate of the magnitude of duration dependence.<sup>18</sup> During the first twelve months of unemployment the monthly

---

<sup>16</sup>According to the LFS, flows into construction from nonemployment were in 2014 equal to one-third of the level in 2008.

<sup>17</sup>Overall, 18.4% of spells are censored, which correspond to true censoring (13.3%) and exit after 36 months (5.1%).

<sup>18</sup>The identification of duration dependence in hazard models remains a highly-debated topic, see Machin and Manning (1999).



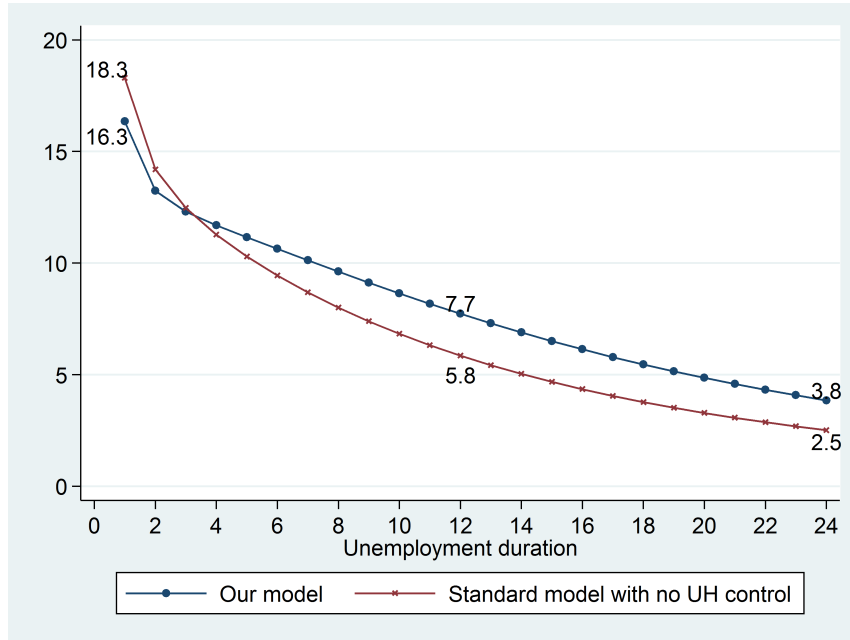


Figure 8: Duration dependence in the baseline model and the model without unobserved heterogeneity (%)

Note. Source: own computations.

hazard of the average individual drops by 55% or 9 pp –from 16.4% to 7.4%– and it halves again during the second year. For comparison, the first figure is equal to two-thirds of the difference between the hazard rates in the first month for an average worker with no benefits and for one with a 12-month entitlement to contributory benefits (which amounts to 13.5 pp). It is also equal to 47% of the difference between the former hazard rate and the hazard rate for an average worker with a 24-month entitlement (which amounts to 19.2 pp). Moreover, the impact of duration dependence is much higher than the 5.6 pp difference implied by the movement from the 25th to the 75th percentile in the distribution of actual work experience and the meager 2.8 pp difference between the initial hazard rates of 25-34 year-old workers and 45-54 year-old ones.

Figure 8 also confirms the need to control for unobserved heterogeneity. Failure to do so biases the estimation of duration dependence upwards, as indicated by the steeper slope of the curve which depicts the average hazard for our baseline model in that case (which now falls by 68%, from 18.3% to 5.8%, during the first year). The estimates related to unobserved heterogeneity appear in Appendix Table A.2. While their interpretation is not straightforward, it is still worth to briefly comment them. According to our results, there are two prevailing types of workers: the  $(\eta_{high}^u, \eta_{low}^e)$  type, i.e. those with a strong labor-market attachment, who leave unemployment fast and employment slowly (32% of the individuals in the expansion), and the  $(\eta_{low}^u, \eta_{low}^e)$  type, i.e. those who leave both unemployment and employment slowly (50% of the

individuals). The observed changes in the shares from the expansion to the recession indicate that part of the increase in unemployment duration is due to a fall in the share of fast unemployment leavers (by 13 pp) and an offsetting increase in slow leavers, especially among those with low exit rates from both unemployment and employment.

#### 4.4.2 The predicted probability of entering LTU or VLTU

Both the initial hazard rate and the slope of the hazard function differ across individuals. In order to assess the marginal impact of individual characteristics on the probability that a workers enters LTU or VLTU, we report in Table 5 the survival rates in unemployment at 12 and 24 months –i.e. the probability that an individual does not manage to find a job during the first or second year of unemployment. Apart from the average survival rates reported in the top row, these rates are constructed by varying one characteristic at a time and setting all other characteristics to the values used to construct the average hazard rates. Moreover, in order to construct the survival rates at 24 months we have rescaled the survival rate at 12 months to 100. It therefore measures the conditional probability that an individual who is still unemployed after one year remains unemployed during the subsequent 12 months.

Inspection of the table reveals that the chances of entering LTU have almost doubled in recent years, as indicated by the rise in the survival rate at 12 months from 13.8% in the expansion to 25.5% in the recession. The difficulty to escape LTU is captured by the survival rate at 24 months. In the expansion two-thirds of the long-term unemployed managed to leave unemployment in the next twelve months, but in the recession this figure dropped to one-half. Hence the recent recession is characterized by a strong rise in the inflow rate to LTU and a substantial drop in the outflow rate, leading to a higher incidence and a stronger persistence of LTU.

In line with our previous results, we find that individuals over 45 years old are especially prone to enter LTU, with estimated survival probabilities at 12 and 24 months in the recession of, respectively, 35% and 63%. The vulnerability of these workers is not a new situation, however, as the survival probabilities for this group were also quite high in the expansion. Given our controls for other worker characteristics, this finding points at structural problems for older workers in rebuilding their working careers after job loss.

In the case of education we find surprisingly small and non-monotonic effects. For the expansion, we find a U-shaped pattern in the relation between education and the survival rate. The individuals with at most mandatory education enjoy the lowest survival rates while college graduates face the largest ones. The difference in survival rates is around 8 percentage points. This counterintuitive result is likely due to the relatively intensive growth of low-skilled jobs during the expansion, which was fueled by the housing boom (Bonhomme and Hospido 2017). Indeed, for the recession period, characterized by a steep drop in the demand for low-skill labor, the differences across all educational attainment groups are much smaller. For example, the difference in

Table 5: Survival rates in unemployment at 12 and 24 months (%)

	Expansion		Recession	
	12 months	24 months	12 months	24 months
Overall	13.8	33.2	25.5	51.3
Age				
25-34 years old	13.3	32.2	23.7	48.9
35-44 years old	16.0	38.6	27.5	53.9
45-54 years old	27.5	49.8	34.9	62.9
Education				
Primary or less	13.4	31.0	28.4	51.8
Secondary, 1st stage	11.2	27.7	24.2	47.1
Secondary, 2nd stage	14.7	32.0	26.6	50.8
College	19.6	35.9	27.6	50.7
Skill				
High	14.9	36.0	26.0	52.6
Medium	12.5	31.6	23.4	49.0
Low	14.5	31.9	30.7	54.0
Experience				
P75	10.7	28.3	18.5	43.4
P50	12.2	30.7	22.3	47.9
P25	16.2	36.6	30.8	56.5
P10	20.6	42.2	40.6	64.9
Industry				
Manufacturing	12.3	30.0	23.7	47.3
Construction	11.8	31.8	23.6	48.3
Non-market services	18.4	39.7	30.9	58.3
Trade	14.8	30.6	27.7	50.2
Hospitality	12.3	27.5	22.1	46.8
Other services	14.7	36.2	25.7	54.7
Unemployment insurance				
No benefits	5.7	19.9	12.1	36.0
6 months	13.0	19.9	20.6	36.0
12 months	35.0	19.9	41.9	36.0
18 months	45.3	30.9	52.6	46.9
24 months	53.3	56.1	60.7	65.6
Unemployment assistance				
No	5.7	19.9	12.1	36.0
Yes	31.3	51.7	44.3	67.3
Business cycle				
High growth	12.6	30.7	22.2	49.5
Low growth	15.2	35.8	28.4	52.6

Note: The sample is made up of males aged 25-54 years old. The expansion corresponds to the period 2001-2007 and the recession to 2008-2014. The probability for the 24th month is computed after resetting it to 100 at 12 months.

the chances of becoming long-term unemployed between college and compulsory education graduates is reduced to 3 pp. The U-shaped relationship is also present for our occupation-based measure of skill, with less skilled workers showing higher survival rates in the recession. Apart from labor demand, another factor underlying this finding could be that higher job opportunities for more skilled workers are hampered by their higher reservation wages. On the other hand, in our companion estimation of employment hazards we do find that more educated and more skilled workers have significantly longer employment durations (Bentolila *et al.* 2017).

Table 5 reveals that higher work experience does significantly reduce the chances of becoming long-term unemployed. Moving from the 10th to the 75th percentile of the distribution of actual work experience reduces the survival rate at 12 months by around 50% in both the expansion and the recession.

As expected, we find that workers from construction have the lowest survival rate (at twelve months) in the expansion. What is somewhat more surprising is that they still enjoy the second-lowest survival rates in the recession, despite the bursting of the housing bubble. The explanation for this finding seems to be the comparatively high degree of turnover in construction. Almost 60% of jobs in this industry last less than 3 months, compared to 44% for the other industries. Thus, short-duration temporary contracts seem to act as an informal work-sharing arrangement, allowing a relatively large share of unemployed construction workers to find work and thus avoid entering LTU. The alternative explanation of a high degree of occupational mobility is not supported by the data. Indeed, inspection of post-unemployment outcomes reveals that unemployed construction workers are less likely to take up jobs in a different industry than workers from the other industries. And those who do mostly relocate to non-knowledge intensive service industries (see Jansen *et al.* 2016 for details).<sup>19</sup>

At first blush these results may seem inconsistent with the fact that almost 20% of the very long-term unemployed used to work in construction (see Table 2). However, it should be recalled that this industry made up around 13% of total employment before the crisis and, contrary to our initial descriptive analysis, we are now controlling for worker characteristics. The prevalence of high-school dropouts and other unfavorable characteristics among construction workers shows up in low average exit rates, but differences with other industries become much less hampering once we control for those characteristics.

The largest adverse effects on unemployment exit rates are associated with the receipt of unemployment benefits.<sup>20</sup> As shown in Figure 9, during the recession a worker

---

<sup>19</sup>In connection with this issue, Lacuesta *et al.* (2012) downplay the implications of the employment sectoral change for the job-finding chances of the unemployed in Spain. They argue that in spite of the high degree of sectoral reallocation of employment stemming from the crisis, the degree of similarity between the occupations that the unemployed had in their previous job and those of the employed –or indeed of new vacancies– is high when compared with other European countries, and that this similarity has not fallen much during the crisis.

<sup>20</sup>Large effects of unemployment benefits on unemployment duration have been found in many articles, like those cited regarding Spain in Section 2. Recent research has moved towards exploiting natural experiments, see Moffit (2014) for an overview. For Spain, Rebollo-Sanz and Rodríguez-

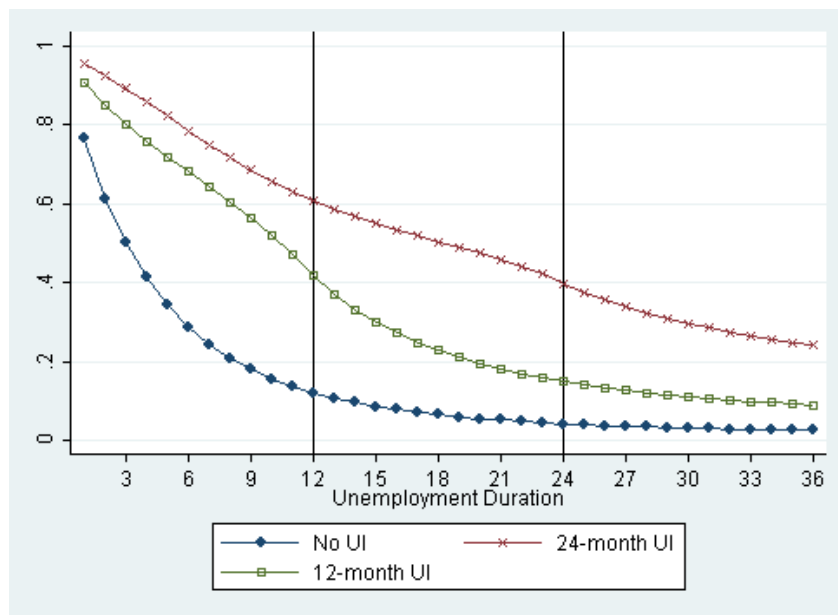


Figure 9: Effect of unemployment insurance (UI) on the survival rate in unemployment  
Source: own computations.

with a 12-month entitlement to contributory benefits has an almost 42% chance of entering LTU. By contrast, for a similar worker with no benefits this probability is 30 pp lower. Analogously, conditional on having entered LTU, a 24-month benefit entitlement raises the probability of entering VLTU by a further 30 pp vis-à-vis a comparable worker without UI benefits ( $0.656 - 0.36$ ), or 35 pp unconditionally ( $0.607 \times 0.656 - 0.121 \times 0.36$ ).<sup>21</sup> In terms of entry into LTU, the effect for a worker without benefits of getting just a 6-month UI entitlement is larger than the effect of the economy moving from expansion to recession –namely, from 5.7% to 13% in the first column vs. going from the first figure to 12.1% in the third column. And much higher differences are found for higher entitlement lengths. The size of the change in the survival rate attached to unemployment assistance benefits is similar. These differences in survival rates suggest that workers with unemployment benefits either exert a relatively low search effort and/or have a high reservation wage. Then, when they step up their effort to find a job upon the upcoming expiry of their benefits, they are affected by strong duration dependence, and so at that point their chances of leaving unemployment are much lower than at the start of their unemployment spell. In connection with this issue, in Section 5 we take a look at self-reported reservation wages.

Planas (2016) have found a strong impact on the job-finding probability of the reduction in the benefit replacement rate that took place in Spain in 2012.

<sup>21</sup>Note that the rates of survival to 24 months shown in the table are the same for all benefit entitlements up to 12 months since, by construction, upon exhaustion of their benefits the monthly hazard rate for workers with UI benefits converges to the hazard rate for workers without benefits.

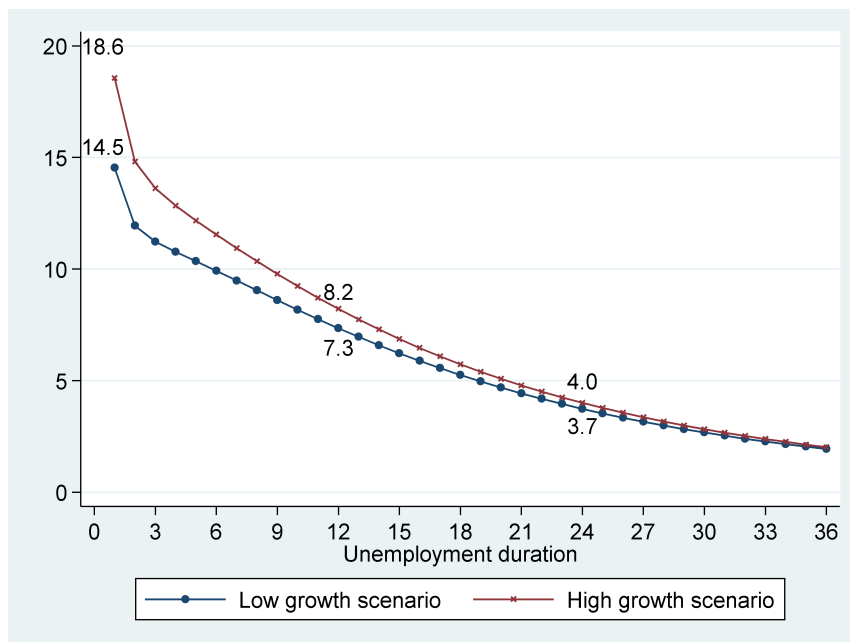


Figure 10: Effect of the business cycle on the hazard rates by unemployment duration

Source: own computations.

In sum, we find that the probabilities of entering LTU and VLTU are quite large and that they increased significantly in the recession. The determinants of both states are quite similar and we obtain evidence of strong duration dependence. While individual characteristics like educational attainment and skill are not associated with large changes in the rate of exit from unemployment, there are larger changes attached to mature age, low experience, and receipt of unemployment benefits.<sup>22</sup> The latter finding points at the absence of active labor market policies.

#### 4.4.3 The business cycle and unemployment duration

How does the cycle impact on hazard rates vary by workers' unemployment duration? To answer this question we have computed the average hazard rate in the recession in two scenarios. The bad scenario is one in which provincial employment growth is set at its first quartile and the national unemployment rate at its third quartile in this period (-4.8% and 25.1%, respectively), while in the good scenario each variable is set at the opposite quartile (third and first, with respective values of -0.4% and 18.6%).

As can be seen in Figure 10, the predicted hazard rates for unemployment durations of 1, 12, and 24 months in the low-growth and the high-growth scenarios, respectively, are: 14.5 vs. 18.6, 7.3 vs. 8.2, and 3.7 vs. 4.0. In other words, upon an improvement in

<sup>22</sup>Several of these results are common to Nagore and van Soest (2016b), who analyze unemployment exits during the crisis using the same data source but different samples and methods.

the labor market, those who have been unemployed for one month leave 28.3% faster, those unemployed for one year leave 12.3% faster, and those unemployed for 24 months leave only 8.1% faster. These figures clearly illustrate that a cyclical upturn helps the long-term unemployed very little, and it confirms the relative exit rates by duration that were previously shown in Figure 5. Our estimates imply that growth alone will not suffice to significantly push the long-term unemployed back into jobs and this entails a substantial risk of a social and economic exclusion of these people unless effective labor market policies to reentrance them are implemented.

## 4.5 Alternative empirical specifications

Given the prevalence of temporary labor contracts in Spain, many of the jobs that unemployed workers find are very short-term. We may therefore wonder what types of workers mostly benefit from the availability of short-duration jobs and whether these jobs act as stepping-stones to more stable employment. One way to look at this issue is to treat exits from unemployment to employment spells that last less than 30 days as right-censored rather than as standard exits.<sup>23</sup> We can then examine the resulting changes in the estimated coefficients associated with worker characteristics, which we again do through the lens of survival rates to 12 and 24 months in unemployment.

The full results are reported in Appendix Table A.3, while the most relevant changes are presented in Table 6. By construction, the average survival rates turn out to be larger than in the baseline, by 17.4 and 14.5 pp, respectively, for LTU and VLTU. But the important point is that the effect of ignoring short-duration employment spells varies significantly across population groups. To see this, notice that the increase in the LTU rate for college graduates is 6.7 pp less than for workers without secondary education. Similarly, the survival rate in LTU for workers at the first decile of the distribution of experience increases by 9.8 pp more than for those at the 75th percentile. Furthermore, in this alternative specification the estimated survival rates at both 12 and 24 months are monotonically decreasing in the educational attainment of the unemployed. These results indicate that the somewhat counterintuitive U-shape pattern of the survival rates in our baseline specification is a reflection of the rotation of relatively low-skilled and inexperienced workers on short-duration contracts of less than a month.

One objective of future labor market reforms should be to improve access to stable jobs, especially for workers at the bottom of the skill distribution. The latter may require restrictions on the use of temporary contracts, but policymakers should take into account that such a policy might have adverse effects on the current long-term unemployed. A short-duration temporary contract may be the only viable option after years of unemployment and in some cases such spells may improve the subsequent job-finding rates of the long-term unemployed. The latter issue is extremely important for policy purposes, but an analysis of the causal impact of short-duration spells on the subsequent job-finding rates of the long-term unemployed is left for future research, as

---

<sup>23</sup>We also adjust the estimation of the employment hazard accordingly.

Table 6: Survival rates in unemployment at 12 and 24 months in the recession. Censored model (%)

	Survival rate		Change vs. baseline	
	12 months	24 months	12 months	24 months
Overall	42.9	65.7	17.4	14.5
Education				
Primary or less	47.6	67.8	19.2	16.0
Secondary, 1st st.	42.7	63.6	18.5	16.5
Secondary, 2nd stage	42.8	64.0	16.3	13.2
College	40.1	61.4	12.5	10.7
Experience				
P75	31.4	56.0	13.0	12.6
P50	37.8	61.6	15.5	13.8
P25	50.7	71.6	19.9	15.1
P10	63.4	80.0	22.7	15.1
Unemployment insurance				
No benefits	28.3	53.4	16.2	17.5
6 months	36.4	53.4	15.7	17.5
12 months	54.8	53.4	12.9	17.5
18 months	63.7	61.8	11.0	15.0
24 months	71.4	75.5	10.7	9.9
Unemployment assistance				
No	28.3	53.4	16.2	17.5
Yes	59.5	76.6	15.1	9.3

Note: The sample is made up of males aged 25-54 years old. The recession corresponds to the period 2008-2014. The probability for the 24th month is computed after resetting it to 100 at 12 months. The last two columns report the change in the survival rate in pp vis-à-vis the baseline estimates given in Table 5.



it requires different techniques.

Next, in an attempt to test the robustness of our results, we have also estimated an alternative model that includes a control for the type of contract in the previous job –temporary or permanent– and its interaction with the linear term of UI entitlement. The objective is to minimize the possibility that our controls for benefit entitlements capture unobserved individual traits that are not captured by our controls for time-invariant unobserved heterogeneity. For example, some workers may wish to reenter unemployment periodically once they qualify for UI benefits. These persons may be more inclined to accept temporary jobs and their propensity to exhaust their benefit entitlements is likely to be relatively strong. The estimated effects of specific worker characteristics indeed differ with respect to our baseline specification, but in terms of the overall impact on entry to LTU or VLTU the estimates are very similar, both qualitatively and quantitatively. The largest difference appears in the effect of having a 24-month entitlement to UI benefits on the survival rate at 12 months, which is 12 pp lower in this alternative specification.<sup>24</sup>

## 5 Reservation wages in the Great Recession

Given the reduced-form nature of our estimation, we cannot distinguish between demand and supply factors. This raises the question of whether exit rates are low because labor demand is low or because the long-term unemployed have too high reservation wages. To answer this question we analyze the adjustment of self-reported reservation wages during the recession.

The contents of this section are related to an ongoing debate on wage cyclicality in Spain. Real wage rigidity is well-known to be high in Spain.<sup>25</sup> Reentry wages after unemployment have however fallen considerably during the crisis and this process started as early as 2010. For example, for the prime-age males in our sample, the average reentry real wage dropped by 15.3% between 2009 and 2014 (while it grew by 5.2% between 2005 and 2009). This suggests a relatively strong adjustment in reservation wages. However, the evolution of reentry wages depends on the composition of those unemployed who regain employment and their decisions to accept job offers. Moreover, the difference between the reentry wages of the short- and long-term unemployed in our sample is very small. This could point at the need for further reductions in the

---

<sup>24</sup>These results are available upon request.

<sup>25</sup>According to the estimates with MCVL data for 1987-2013 by Font *et al.* (2015), a 1 pp increase in unemployment leads to a fall in real wages of -0.24 pp in the recession, and between -0.38 and -0.48 in the expansion. Real wage elasticity is found to be about 70% higher for job movers (see also De la Roca 2014). Izquierdo and Puente (2015) suggest that there has been a structural change after the 2012 labor reform, which changed the regulation of wage bargaining (García-Pérez and Jansen 2015), finding a 0.13 pp increase in the real wage elasticity for 2012Q3-2013Q4. Nonetheless, these elasticities are small in comparison with the estimates above unity in Pissarides (2009) for the US and several European countries. Moreover, the elasticity is countercyclical, i.e. the opposite of what would be needed to stabilize employment.

reservation wages of the latter, but it might also reflect the fact that only the best-qualified long-term unemployed manage to find a job. For this reason, we pursue an alternative route, by analyzing the behavior of self-reported reservation wages.

## 5.1 Self-reported reservation wages in the crisis

We use data from the Spanish Survey of Family Finances (Encuesta Financiera de las Familias, EFF). This survey asks unemployed respondents the following question: “At what gross monthly wage would you be willing to work?”. We keep only people who report a positive nominal reservation wage up to 4,000 euros per month in any year.<sup>26</sup> To avoid having people who exert little or no job search effort, we exclude respondents who report being unemployed for more than five years.

We pool together four waves, corresponding to years 2002, 2005, 2008, and 2011. The sample size is small, 2,816 observations, of which 1,538 are for men. The data constitute an incomplete panel, with the panel dimension being rather small, since around 80% of individuals are only observed once. For this reason, we estimate by pooling the data. The descriptive statistics of the variables are presented in Table A.4. The average monthly reservation wage is around 1,200 euros (at 2011 prices), the average duration is high –2 years–, one-third of individuals are receiving unemployment insurance benefits and 10% are getting unemployment assistance benefits. By household, average gross real income is around 40,500 euros per year and average real net wealth is around 390,000 euros.

Our empirical specification is as follows:

$$\log(\omega_{it}) = \alpha_t + \beta \log(Dur_{it}) + \gamma UI_{it} + \delta UA_{it} + X'_{it}\mu + u_{it}$$

where subindex  $i$  denotes an individual,  $t$  is time,  $\alpha_t$  is a year fixed effect,  $Dur$  is unemployment duration measured in years,  $UI$  is an indicator for the receipt of unemployment insurance benefits,  $UA$  is an indicator for the receipt of assistance unemployment benefits, and  $X$  is a vector that contains the following variables: age, age squared, marital status (single, married, unmarried partner, separated, divorced), education (secondary first stage or less, secondary second stage, college), household-head status, household size (number of members), annual household gross real income (in the preceding year), real non-financial wealth, real financial wealth, and real debt. All monetary variables are deflated, with 2011 as the base year. The EFF provides five imputations for missing values in most variables. We estimate the wage equation with each of the five data sets and then compute simple averages of the coefficients and corrected standard errors (Banco de España 2015). Standard errors are clustered at the household level.

In view of the small sample size we report estimates for the total sample, including a dummy variable for females, and then for males alone. The first column of Table

---

<sup>26</sup>There are only 11 observations above this threshold; keeping them slightly raises the estimated elasticity to unemployment duration.

Table 7: Reservation wages  
 Dependent variable: Log monthly reservation wage

	All		Males	
Log duration	-0.016	***	-0.020	**
	(0.006)		(0.008)	
Contributory benefits	0.055	***	0.021	
	(0.015)		(0.020)	
Assistance benefits	0.013		-0.022	
	(0.021)		(0.029)	
Age	0.004	***	0.005	***
	(0.001)		(0.001)	
Female	-0.159	***		
	(0.013)			
Married	0.059	***	0.070	***
	(0.018)		(0.026)	
Unmarried partner	0.057	**	0.107	***
	(0.028)		(0.041)	
Separated	0.033		0.011	
	(0.040)		(0.055)	
Divorced	0.076	*	0.054	
	(0.048)		(0.062)	
Household head	-0.014	**	-0.011	
	(0.006)		(0.007)	
Secondary education, 2nd stage	0.031	**	0.048	**
	(0.014)		(0.020)	
College	0.070	***	0.056	***
	(0.014)		(0.018)	
Household size	0.224	***	0.194	***
	(0.022)		(0.032)	
Total income	0.014	**	0.024	**
	(0.007)		(0.012)	
Real assets	0.001		0.002	
	(0.002)		(0.002)	
Financial assets	0.013	***	0.011	***
	(0.002)		(0.003)	
Debt	0.005	***	0.005	**
	(0.001)		(0.002)	
Observations	2,816		1,358	
R <sup>2</sup>	0.251		0.262	

Note: The specification includes also year dummy variables. Standard errors are clustered at the household level. \*  $p < 0.10$ , \*\*  $p < 0.05$ , \*\*\*  $p < 0.01$ .

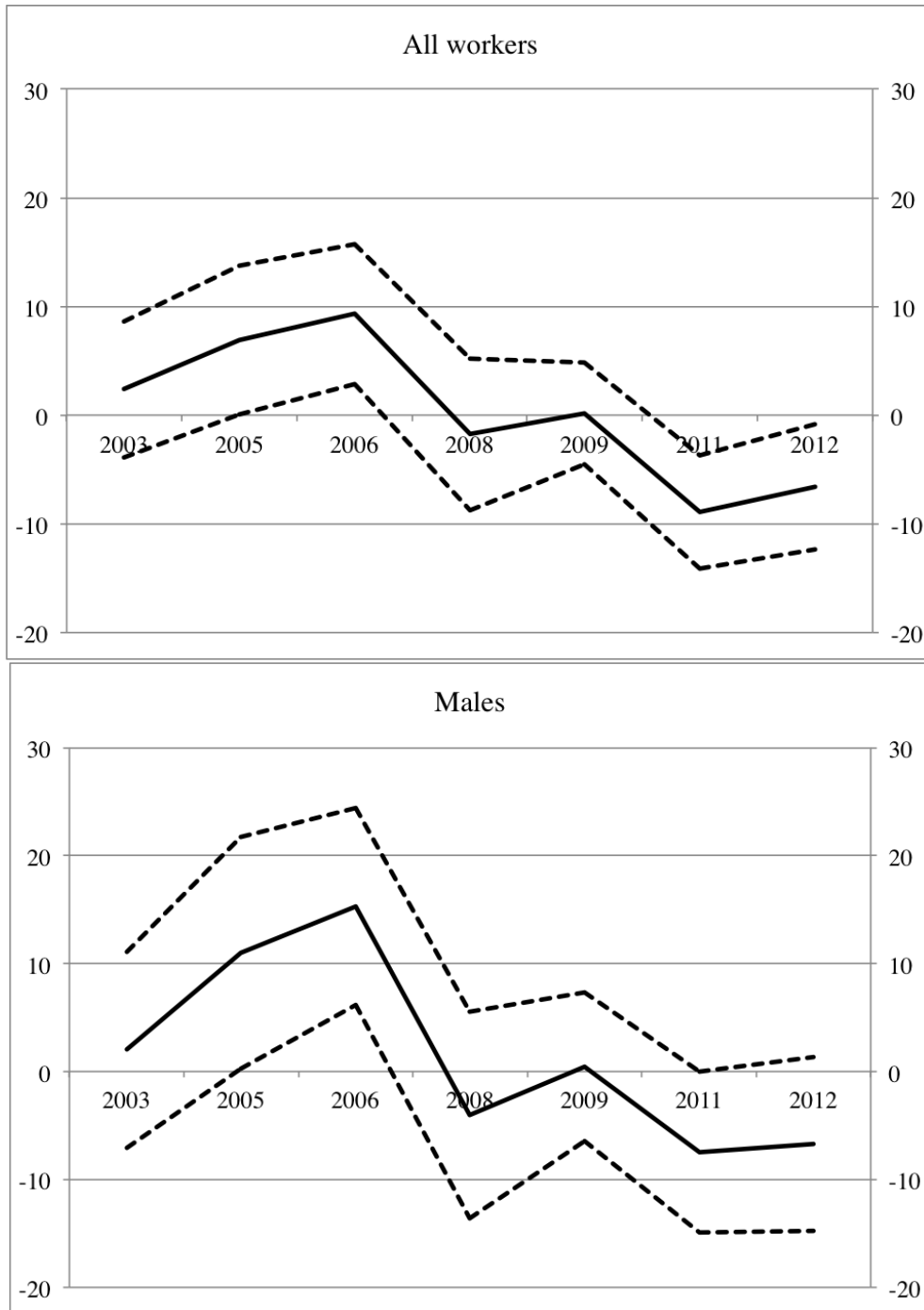
7 shows that women have significantly lower reservation wages, but we should recall that, on average, women also earn lower wages even after controlling for observable characteristics.

Reservation wages are higher for male workers who are older, more educated, and married or cohabiting. They are also larger the higher are the household's size and income. Real assets are not significant, which may be the net outcome of a positive wealth effect and a negative lock-in effect stemming from homeownership. Financial assets, which are more liquid, do exert a positive impact on reservation wages, and debt attracts a positive sign, so that it is not net wealth that matters. Receipt of contributory benefits is significant for the full sample but not for males, and assistance benefits are not significant for any sample.

An important coefficient is the elasticity of the reservation wage to unemployment duration, which is equal to  $-1.6\%$  overall and  $-2.0\%$  for males. These are very small elasticities, which suggest that reservation wages do not respond very strongly to unemployment duration. On the other hand, the profile of the coefficient on the yearly dummy variables, depicted in Figure 11, shows that declared reservation wages do indeed trace the business cycle. With respect to 2002, there are significant increases for all workers in the boom years of 2005 and 2006 and large reductions in 2011 and 2012. The pattern is even stronger for males, although it is estimated with less precision due to the smaller number of observations. While, as already mentioned, male wages in our MCVL sample fell by  $15.3\%$  from 2009 to 2014, average reported reservation wages already show a reduction by 2008 and the cumulated fall by 2012 is equal to  $16.8\%$ . Therefore, both figures are quite consistent with each other, suggesting that reservation wages capture an important element in the wages received by workers who reentered employment. In any case, such a large reduction in reservation wages forcefully suggests the lack of room for much further adjustment in reservation wages.

Compared to the existing literature on self-reported reservation wages, we control better for the financial situation of households. Our findings are at variance with the results in Koenig *et al.* (2016), who use data on self-reported reservation wages in the United Kingdom and Germany—from 1991 to 2009 and from 1984 to 2010, respectively—and find low and borderline significant elasticities to the aggregate unemployment rate. Outside the self-reported reservation wage literature, however, the strong and volatile cyclical behavior, that we associate with our coefficients on the time fixed effects, is also found by Chodorow-Reich and Karabarbounis (2016), who compute, for the US from 1961 to 2012, the flow value of the opportunity cost of employment, dividing it into a benefit component and the forgone value of nonworking time. While the first component is small and countercyclical, the second one—which is closer to our measure, since we are controlling for the receipt of unemployment benefits—is procyclical and volatile over the business cycle.

The low response of reservation wages to the receipt of unemployment benefits has also been found by Krueger and Muller (2016). These authors collected a Survey of Unemployed Workers in New Jersey, in 2009-2010, and cannot find a significant relationship between reservation wages and benefits. Like in our sample, however,



Source: own computations. Dashed lines represent 95% confidence intervals.

Figure 11: Annual profile of reservation wages, deviations from 2002 (%)

these wages are positively correlated with financial variables like severance payments and savings. Lastly, our results partially differ from those in Addison *et al.* (2009) using data from the European Community Household Panel over 1994-1999. Only in 7 out of 13 countries in their sample do self-reported reservation wages respond significantly to the receipt of unemployment benefits, but Spain is one of them, with a significant coefficient of 0.092. However, their equation is less informative than ours, since it only includes gender, schooling, age, and time fixed effects as controls. On the other hand, they do not find a significant elasticity of the reservation wage to unemployment duration in most countries, but in the Spanish case it is significant and low, around 1%, which is smaller but close to our estimates.

## 6 Conclusions

We have analyzed the determinants of the buildup and the persistence of the exceptionally high levels of LTU in Spain. Our empirical analysis indicates that mature age, low experience, and entitlement to UI benefits are the main risk factors. Low educational attainment also raises the chances of entering LTU, especially if we mitigate the relevance of spells of less than one month. Moreover, two of the most striking findings are the relatively low risk of LTU for workers from construction and the pervasive impact of negative duration dependence. The job-finding hazard of the average worker drops by 55% during the first twelve months and halves again during the next twelve months. These effects are much larger in size than the cross-sectional differences in job-finding rates across unemployed workers with the same duration. Lastly, over time the job-finding rates become less responsive to improvements in the aggregate labor market conditions.

Our estimates imply that growth alone will not be sufficient to significantly lift the job-finding rates of the long-term unemployed. Moreover, the room for further wage adjustments seems very limited due to the large observed fall in average reentry wages that is matched by a strong decline in self-reported reservation wages. An overall implication of our analysis is therefore that the current levels of LTU entail a substantial risk of social and economic exclusion. Spain will have to step up its effort to design effective active labor market policies that help to improve the employment prospects of the long-term unemployed.

Our study offers no clear prescriptions for the design of efficient active labor market policies for the long-term unemployed. Nonetheless, the recent meta-analysis of Card *et al.* (2015a,b) indicates that these policies can make a significant contribution to the reduction of unemployment and especially of LTU. Investments in training and hiring incentives that are carefully targeted at the LTU deliver the best long-term results while public employment programs tend to deliver the poorest results, but the impact estimates vary considerably between different studies. The appropriate design of the programs is therefore key and the interventions ought to be tailored to the needs of each participant. If these conditions are satisfied, the programs for the long-term unemployed

are often both effective and cost-efficient (Csilag and Fertig 2015).

After a long period of inaction, Spanish policymakers are slowly recognising the need to develop effective tools to fight LTU. Following a recent recommendation of the European Council, Spanish authorities have approved a three-year program –the Programa de Acción Conjunta para Desempleados de Larga Duración– to offer individualized support to one million long-term unemployed people. This support involves the assignment to a personal tutor and the preparation of an individual integration agreement. However, this is nothing but the first step. Spain has a poor track record in the field of active labor market policies and its public employment services are outdated and play at best a marginal role as intermediaries in the labour market (Jansen 2016a,b). These problems need to be addressed before we may expect positive results from the recently announced plan.

Moreover, with a view to the future, it is crucial to intensify the early activation of the unemployed. In particular, this is crucial for unemployed workers who receive benefits, so that they do not reach spell durations at which, due to duration dependence, low exit rates condemn them to enter and remain in long-term unemployment. As noted in Jansen (2016b), the registered unemployed in 2015 had to wait on average nine months before they received their first service from the public employment services and around one-third was already in LTU at the time when they received it. Early activation acts as a preventive tool that impedes the quick buildup of a large stock of long-term unemployed.

# Appendix

## A Additional empirical results

This Appendix provides additional empirical results on the exit rate from unemployment and reservation wages.

### A.1 Hazard rates and survival probabilities



Table A.1: Estimates of the hazard of leaving unemployment

	Expansion				Recession			
	Exit to temporary contract		Exit to permanent contract		Exit to temporary contract		Exit to permanent contract	
	Coeff.	z	Coeff.	z	Coeff.	z	Coeff.	z
Age 35-44 years old	-0.035	-0.89	0.180	2.05	-0.106	-4.69	0.232	4.36
Age 45-54 years old	-0.586	-4.16	0.442	2.04	-0.295	-5.00	0.438	3.79
Age 35-44 y.o.×log Dur	-0.064	-2.51	-0.038	-0.65	-0.018	-1.55	-0.135	-4.34
Age 45-54 y.o.×log Dur	-0.006	-0.07	-0.127	-0.93	-0.067	-2.06	-0.210	-3.07
Secondary education, 1 st.	0.107	2.66	-0.033	-0.32	0.160	4.86	-0.185	-2.41
Secondary education, 2 st.	-0.079	-1.75	-0.093	-0.82	0.103	2.72	-0.111	-1.31
College education	-0.348	-6.64	-0.117	-0.92	-0.024	-0.53	0.101	1.05
Secondary ed 1 st.×log Dur	0.008	0.33	0.147	1.96	0.003	0.19	0.166	3.43
Secondary ed 2 st.×log Dur	0.004	0.14	0.172	2.17	-0.035	-1.83	0.180	3.45
College education×log Dur	0.018	0.60	0.191	2.25	-0.027	-1.16	0.193	3.33
High skill	0.093	2.64	0.224	2.67	0.273	7.38	0.015	0.18
Medium skill	0.187	6.29	-0.079	-0.98	0.347	10.11	-0.155	-1.92
High skill×log Dur	-0.088	-4.09	0.020	0.37	-0.093	-5.01	0.173	3.48
Medium skill.×log Dur	-0.071	-3.82	0.130	2.40	-0.071	-4.15	0.171	3.49
Dismissal	0.259	12.67	-0.004	-0.08	0.601	26.33	-0.469	-12.19
Experience	0.471	12.89	1.730	18.47	1.031	31.63	1.596	22.48
ΔEmployment	2.405	3.37	-5.286	-3.06	4.142	14.25	2.904	3.78
ΔEmployment×log Dur	-0.663	-1.50	1.122	0.96	-0.711	-4.49	-0.002	0.00
Unemployment rate	0.010	1.19	-0.220	-14.25	-0.017	-5.63	-0.066	-10.51
Unempl. rate×log Dur	-0.021	-3.63	0.053	4.13	0.006	4.94	0.019	6.57
Labor reform 2010					-0.072	-3.25	-0.073	-1.27
Labor reform 2012					0.009	0.51	0.158	3.47
log Dur	-0.378	-4.43	-0.991	-5.21	-0.693	-13.77	-0.850	-7.06
(log Dur) <sup>2</sup>	0.255	6.22	-0.052	-0.47	0.337	11.37	-0.032	-0.39
(log Dur) <sup>3</sup>	-0.066	-7.28	0.000	-0.01	-0.104	-16.79	-0.029	-1.72
Unemployment insurance	-0.436	-33.82	-0.381	-11.92	-0.380	-37.52	-0.157	-7.04
Unemployment insurance <sup>2</sup>	0.042	22.32	0.031	6.84	0.035	24.83	0.014	4.55
Unemployment insurance <sup>3</sup>	-0.001	-17.91	-0.001	-4.76	-0.001	-20.30	0.000	-3.80
U. insurance×log Dur	-0.026	-3.55	-0.039	-2.51	-0.024	-4.95	-0.035	-3.28
U. insurance×(log Dur) <sup>2</sup>	0.006	1.63	0.021	2.80	0.009	3.95	0.009	1.85
U. assistance	-1.083	-32.14	-1.086	-11.38	-1.107	-46.11	-1.287	-18.78
U. assistance×log Dur	0.036	1.44	0.111	1.63	0.030	1.96	0.187	4.29
No. of spells		37,399				62,045		
No. of observations		1,346,016				1,641,889		
Log likelihood		-352,712.09				-446,462.87		

Note: The sample is made up of males aged 25-54 years old. The expansion corresponds to the period 2001-2007 and the recession to 2008-2014.

Table A.2: Unobserved heterogeneity estimates, 2001-2014

Types	Expansion		Recession	
	Coeff.	z	Coeff.	z
$\eta_1^u$	-2.19	-17.98	-1.83	-23.20
$\eta_2^u$	-0.96	-7.93	-3.17	-40.97
$\eta_1^e$	-2.68	-14.37	-3.59	-23.58
$\eta_2^e$	-1.73	-9.24	-2.59	-16.94
Probabilities				
$Pr(\eta_{high}^u, \eta_{low}^e)$	0.32	17.93	0.23	10.18
$Pr(\eta_{high}^u, \eta_{high}^e)$	0.15	–	0.11	3.68
$Pr(\eta_{low}^u, \eta_{low}^e)$	0.50	30.48	0.58	–
$Pr(\eta_{low}^u, \eta_{high}^e)$	0.03	6.63	0.08	11.99

Note: The sample is made up of males aged 25-54 years old.

Table A.3: Survival rates in unemployment at 12 and 24 months with censoring of short jobs (%)

	Expansion		Recession	
	12 months	24 months	12 months	24 months
Overall	26.7	48.0	42.9	65.7
Age				
25-34 years old	26.2	47.2	40.7	63.6
35-44 years old	28.4	52.0	45.3	68.0
45-54 years old	40.1	63.7	52.5	75.5
Education				
Primary or less	27.5	47.8	47.6	67.8
Secondary, 1st st.	24.1	44.2	42.7	63.6
Secondary, 2nd stage	27.5	46.6	42.8	64.0
College	30.8	48.2	40.1	61.4
Skill				
High	27.9	50.3	43.6	66.8
Medium	24.6	46.1	40.9	64.2
Low	28.4	48.0	46.8	67.1
Experience				
P75	19.0	39.2	31.4	56.0
P50	22.6	43.5	37.8	61.6
P25	32.8	54.1	50.7	71.6
P10	43.1	63.4	63.4	80.0
Industry				
Manufacturing	22.1	42.2	38.4	61.0
Construction	23.3	46.2	40.1	62.4
Non-market services	31.2	52.0	47.4	71.1
Trade	26.1	44.9	42.2	63.8
Hospitality	24.5	42.6	38.3	61.9
Other services	30.8	53.2	46.4	70.1
Unemployment insurance				
No benefits	16.0	35.5	28.3	53.4
6 months	25.1	35.5	36.4	53.4
12 months	46.2	35.5	54.8	53.4
18 months	55.2	45.8	63.7	61.8
24 months	63.4	65.9	71.4	75.5
Unemployment assistance				
No	16.0	35.5	28.3	53.4
Yes	43.8	62.1	59.5	76.6
Business cycle				
High growth	24.6	44.6	39.2	64.1
Low growth	28.9	51.6	46.1	67.0

Note: The sample is made up of males aged 25-54 years old. The expansion corresponds to the period 2001-2007 and the recession to 2008-2014. The probability for the 24th month is computed after resetting it to 100 at 12 months.

## A.2 Descriptive statistics of the reservation wage sample

Table A.4: Descriptive statistics for reservation wage sample

	Mean	Std. dev.
Reservation wage (monthly)	1,177.3	511.5
Unemployment duration	2.0	1.4
Contributory benefits	33.1	51.6
Assistance benefits	9.8	32.6
Age	36.6	13.8
Female	45.4	54.5
Single	50.4	54.8
Married	36.6	52.8
Unmarried partner	5.1	24.2
Separated	3.5	20.1
Divorced	3.3	19.4
Household head	35.5	52.4
Secondary education, 1 <sup>st</sup> stage or less	45.8	54.6
Secondary education, 2 <sup>nd</sup> stage	35.7	52.5
College	18.5	42.5
Household size	3.5	1.5
Total income	40,532.6	59,082.0
Real assets	350,236.4	1,613,022.5
Financial assets	77,356.3	700,874.5
Debt	38,007.4	360,404.6

Note: 2,816 observations. All variables are percentage shares except monetary variables, which are in 2011 euros, age and unemployment duration which are in years, and household size which is the number of members.

## References

- [1] Abraham K, Sandusky K, Haltiwanger J, Spletzer JR (2016) The consequences of long-term unemployment: evidence from matched employer-employee data, US Census Bureau Center for Economic Studies Paper CES-16-40
- [2] Abbring JH, van den Berg GJ (2004) Analysing the effect of dynamically assigned treatments using duration models, binary treatment models, and panel data models. *Empirical Economics* 29:5–40
- [3] Addison JT, Centeno M, Portugal P (2009), Do Reservation Wages Really Decline? Some International Evidence on the Determinants of Reservation Wages. *Journal of Labor Research* 30(1):1–8
- [4] Arranz JM, García-Serrano C (2014) The interplay of the unemployment compensation system, fixed-term contracts and rehiring: the case of Spain. *International Journal of Manpower* 35(8) 1236–1259
- [5] Arranz JM, García-Serrano C, Toharia L (2010). *Journal of Labor Research* 31(1):67–90.
- [6] Banco de España (2015), The Spanish Survey of Household Finances (EFF) 2011 User Guide. Unit of Microeconomic Information and Analysis ([www.bde.es/f/webbde/SES/estadis/eff/ficheros/en/UserGuide\\_2011.pdf](http://www.bde.es/f/webbde/SES/estadis/eff/ficheros/en/UserGuide_2011.pdf))
- [7] Bentolila S, Dolado JJ, Jimeno JF (2012), Reforming an insider-outsider labor market: the Spanish experience, *IZA Journal of European Labor Studies* 1(4)
- [8] Bentolila S, García-Pérez JI, Jansen M (2017), Are the Spanish long-term unemployed unemployable?, Fedea Working Papers (forthcoming)
- [9] Bentolila S, Jansen M (2016), Long-term unemployment after the Great Recession: causes and remedies. CEPR Press, London
- [10] Bentolila S, Jansen M, Jiménez G (2016), When credit dries up: job losses in the Great Recession, CEMFI, unpublished manuscript.
- [11] Bonhomme S, Hospido L (2017) The cycle of earnings inequality: evidence from Spanish social security data, *Economic Journal*, forthcoming
- [12] Bover O, Arellano M, Bentolila S (2002) Unemployment duration, benefit duration, and the business cycle, *Economic Journal*, 112(479): 223–265
- [13] Bover O, Gómez R (2004) Another look at unemployment duration: exit to a permanent vs. a temporary job. *Investigaciones Económicas* 28(2):285–314

- [14] Card D., Kluve J, Weber A (2015a) Active labour market policies and long-term unemployment. In Bentolila S and Jansen M (eds) Long-term unemployment after the Great Recession: causes and remedies. CEPR Press, London
- [15] Card D., Kluve J, Weber A (2015b) What works? A meta analysis of recent active labor market program evaluations, IZA Discussion Paper no. 9236
- [16] Carrasco R, García-Pérez JI (2015) Employment dynamics of immigrants versus natives: evidence from the boom-bust period in Spain, 2000-2011, *Economic Inquiry* 53(2): 1038–10
- [17] Chodorow-Reich G, Karabarbounis L (2016) The Cyclicalty of the Opportunity Cost of Employment. *Journal of Political Economy* 124(6):1563–1618
- [18] Csillag M, Fertig M (2015) Cost–benefit analysis of remedial interventions for the long-term unemployed. Directorate-General for Employment, European Commission
- [19] De la Roca J (2014) Wage cyclicality: evidence from Spain using social security data. *SERIEs: Journal of the Spanish Economic Association* 5(2):173–195
- [20] De La Roca J, Puga D (2016) Learning by Working in Big Cities, *Review of Economic Studies* 83 (forthcoming)
- [21] Elsby MWL, Hobijn B, Şahin A (2015) On the importance of the participation margin for labor market fluctuations. *Journal of Monetary Economics* 72: 64–82
- [22] Farré L., Fasani F, Mueller H (2015) Feeling useless: the effect of unemployment on mental health in the Great Recession, Barcelona GSE Working Paper Series Working Paper no. 838
- [23] Font P, Izquierdo M, Puente S (2015): Real wage responsiveness to unemployment in Spain: Asymmetries along the business cycle, *IZA Journal of European Labor Studies* 4:13
- [24] García Pérez JI (1997) Las tasas de salida del empleo y el desempleo en España (1978-1993). *Investigaciones Económicas* 21(1):29-53.
- [25] García-Pérez JI (2006) Job separation in a non-stationary search model: a structural estimation to evaluate alternative unemployment insurance systems, *Journal of Applied Econometrics* 21(2):245–272
- [26] García Pérez JI (2008) La Muestra Continua de Vidas Laborales (MCVL): una guía de uso para el análisis de transiciones. *Revista de Economía Aplicada* 16(E-1):5–28.
- [27] García-Pérez, JI, Jansen M (2015) Assessing the impact of Spain’s latest labour market reform, *Spanish Economic and Financial Outlook* 4 (May): 5–15

- [28] García-Perez JI, Muñoz-Bullón F (2011) Transitions into permanent employment in Spain: An empirical analysis for young workers. *British Journal of Industrial Relations* 49(1):103–143
- [29] Gaure S, Roed K, Zhang T (2007) Time and causality: a Monte Carlo assessment of the timing-of-events approach. *Journal of Econometrics* 141(2): 1159-1195
- [30] Heckman J, Singer B (1984) A method for minimizing the impact of distributional assumptions in econometric models for duration data. *Econometrica* 52(2): 271–320
- [31] Izquierdo M, Puente S (2015): Wage response to changes in the cyclical situation: an estimate based on MCVL social security administrative labour records, *Economic Bulletin, Banco de España* (June): 21–25
- [32] Jansen M (2016a) Peer review on approaches to integrate long-term unemployed persons, Peer country comments paper - Spain, European Commission, Directorate-General for Employment, Social Affairs and Inclusion, Brussels
- [33] Jansen M (2016b) The provision of integrated support to the long-term unemployed, *New Skills at Work Second Report*, FEDEA and JPMorgan Chase Foundation, Madrid
- [34] Jansen M., Jiménez-Martín S, Gorjón J (2016) The legacy of the crisis: the Spanish labour market in the aftermath of the Great Recession, manuscript, Fedea, *Estudios sobre la Economía Española* (10).
- [35] Jenkins S (1995) Easy estimation methods for discrete-time duration models. *Oxford Bulletin of Economics and Statistics* 57(1):129–138
- [36] Jimeno JF, Santos T (2014), The crisis of the Spanish economy. *SERIEs-Journal of the Spanish Economic Association* 5(2):125–141
- [37] Koenig F, Manning A, Petrongolo B (2016), Reservation Wages and the Wage Flexibility Puzzle, IZA DP No. 9717
- [38] Krueger, AB, Cramer J, Cho D (2014), Are the long-term unemployed on the margins of the labor market? *Brookings Papers on Economic Activity* (Spring):229–280
- [39] Alan B. Krueger AB and Mueller AI (2016). A Contribution to the empirics of reservation wages. *American Economic Journal: Economic Policy* 8(1):142-179
- [40] Kroft K, Lange F, Notowidigdo MJ, Katz L (2016) Long-term unemployment and the Great Recession: the role of composition, duration dependence, and nonparticipation. *Journal of Labor Economics* 34(S1), S7–S54
- [41] Lacuesta A, Puente S, Villanueva E (2012) Sectoral change and implications for occupational mismatch in Spain, *Economic Bulletin, Banco de España* (July):97–105



- [42] Lancaster K (1990). The economic analysis of transition data. Cambridge, Cambridge University Press
- [43] Layard R, Nickell S, Jackman R (1991) Unemployment. Macroeconomic performance and the labour market. Oxford University Press
- [44] Leibovich M, Barrett G (2009), The buzzwords of 2009, *New York Times* (December 20):WK3
- [45] Machin S, Manning A (1999) The causes and consequences of long-term unemployment in Europe, in Ashenfelter O and Card D (eds) *Handbook of Labor Economics* (vol. 3) Elsevier, Amsterdam: 3085–3139
- [46] Meyer B (1990) Unemployment insurance and unemployment spells. *Econometrica* 58(4):757–82
- [47] Moffit (2014) Unemployment benefits and unemployment. *IZA World of Labor* 13
- [48] Nagore A., van Soest, A (2016a) New job matches and their stability before and during the crisis. *CentER Discussion Paper* 2016-033
- [49] Nagore A. van Soest, A (2016b) Unemployment exits before and during the crisis, *LISER Working Paper* 2016-14
- [50] Pissarides CA (2009) The Unemployment volatility puzzle: Is wage stickiness the answer? *Econometrica* 77(5):1339–69
- [51] Rebollo-Sanz Y, García-Pérez JI (2015) Are unemployment benefits harmful to the stability of working careers? The case of Spain, *SERIEs-Journal of the Spanish Economic Association* 6(1):1–41
- [52] Rebollo-Sanz Y, Rodríguez-Planas N (2016) When the going gets tough... Financial incentives, duration of unemployment and job-match quality. *IZA Discussion Papers* 10044
- [53] Saint-Paul G (1996) Are the unemployed unemployable? *European Economic Review* 40(7):1501–1519
- [54] van den Berg GJ (2001) Duration models: specification, identification, and multiple durations. In Heckman JJ and Leamer E (eds) *Handbook of Econometrics* (vol. 5), 3381–3460
- [55] Winter-Ebmer R (2016) Long-term effects of unemployment: what can we learn from plant-closure studies? in Bentolila S, Jansen M (eds), *Long-term unemployment after the Great Recession: causes and remedies*. CEPR Press, London