

**More Choice for Men?  
Marriage Patterns after  
World War II in Italy**

*Erich Battistin, Sascha O. Becker, Luca Nunziata*

## **Impressum:**

CESifo Working Papers

ISSN 2364-1428 (electronic version)

Publisher and distributor: Munich Society for the Promotion of Economic Research - CESifo GmbH

The international platform of Ludwigs-Maximilians University's Center for Economic Studies and the ifo Institute

Poschingerstr. 5, 81679 Munich, Germany

Telephone +49 (0)89 2180-2740, Telefax +49 (0)89 2180-17845, email [office@cesifo.de](mailto:office@cesifo.de)

Editor: Clemens Fuest

<https://www.cesifo.org/en/wp>

An electronic version of the paper may be downloaded

- from the SSRN website: [www.SSRN.com](http://www.SSRN.com)
- from the RePEc website: [www.RePEc.org](http://www.RePEc.org)
- from the CESifo website: <https://www.cesifo.org/en/wp>

# More Choice for Men? Marriage Patterns after World War II in Italy

## Abstract

We investigate how changes in the sex ratio induced by World War II affected the bargaining patterns of Italian men in the marriage market after the war. Marriage data from the first wave of the Italian Household Longitudinal Survey (1997) are matched with newly digitized information on war casualties coming from Italian National Bureau of Statistics. We find that men in post-war marriages were better off in terms of their spouse's education, this gain amounting to about half a year of education. By considering heterogeneity across provinces, we find that the effects were more pronounced in more rural provinces, mountainous provinces, and those with a higher share of population employed in agriculture. This suggests that here, the shock provided for a more fundamental change in marriage patterns compared to urban, lower-lying, and less agricultural provinces where marriage markets might have been more flexible to begin with.

JEL-Codes: J120, N340.

Keywords: education, marriage, sex ratio, World War II.

*Erich Battistin*  
*Department of Agriculture and Resource*  
*Economics, University of Maryland*  
*USA – College Park, MD 20742*  
*ebattist@umd.edu*

*Sascha O. Becker*  
*Department of Economics*  
*Monash University*  
*Australia - 3145, Caulfield East, VIC*  
*sascha.becker@monash.edu*

*Luca Nunziata*  
*Department of Economics and Management*  
*University of Padua / Italy*  
*luca.nunziata@unipd.it*

This version: 3rd May 2020

Our thanks to seminar participants at University of Padua and IRVAPP for helpful comments. Andreas Weber, Marco Bertoni, Stefano Fiorin, Martina Miotto and Veronica Toffolutti provided invaluable research assistance to digitize World War II and census data from the Italian National Bureau of Statistics (ISTAT). This research was supported by the University of Padua “Progetti di Ateneo”.

## 1. Introduction

Wars have consequences beyond the immediate short-term loss of lives and destruction of houses and infrastructures. They have been recognized as fundamental causes of change and the main driver of long-run growth (Voigtländer and Voth, 2013). Wars affect the total population stock, but also lead to imbalance in the sex ratio – the relative number of men and women – through differential mortality rates by gender. We study the consequences of such imbalance in sex ratios on marriage patterns using a newly assembled dataset for Italy after World War II (WWII henceforth).

The economic consequences of imbalanced sex ratios have received increased interest in the literature over the last decade. Sex ratios may be considered as a measure of marriage market tightness, as changes in the ratios are often associated with shifts in the bargaining power between females and males in the market or within the household (Chiappori, Fortin, and Lacroix, 2001, and Angrist, 2002). According to Becker (1981), a rise in the relative number of males boosts the relative female bargaining power on the marriage market by increasing the demand for wives. This results in higher female marriage rates, higher female income, and lower female labour market participation rates induced by a standard income effect. The opposite is true if the number of males decreases relative to females.

Many of the existing studies that make use, directly or indirectly, of variations in sex ratios focus on the United States. For example, Angrist (2002) exploits variation in the immigrant flow over time and across ethnic groups to estimate the consequences of changing sex ratios for the children of immigrants in the first half of the twentieth century. His results point to large negative effects on female labor force participation and to positive effects on marriage rates of females. Acemoglu, Autor, and Lyle (2004) use changes in sex ratios related to WWII to identify how women drawn into the labor force affected the wage structure. Fernandez, Fogli, and Olivetti (2004) focus on preference formation of men who were children during the war, as men whose mother worked during the war are more likely to have working wives.

For Europe, Bethmann and Kvasnicka (2013) provide evidence, using Bavarian county-level data right after World War II, that low sex ratios (“missing men”) strongly

increased the frequency of out-of-wedlock births. Brainerd (2017) studies the effects of unbalanced sex ratios in Russia after WWII on women's marital, fertility, and health outcomes. Her analysis shows that women facing lower sex ratios experienced lower marriage rates and an increase in out-of-wedlock births and abortions. She does not look into marital matches, though. Closest to our interest in war-related effects of imbalanced sex ratios on marriage patterns is Abramitzky, Delavande, and Vasconcelos (2011). They look into the consequences of World War I on marriage patterns in France. Their main findings related to ours are that after the war and in regions with higher mortality rates, men were less likely to marry women of lower social classes and the age gap decreased.

Our study contributes to the literature in three dimensions. It is the first study of the effects of WWII on marriage patterns in Italy.<sup>1</sup> It is not clear a priori that a shock to sex ratios should lead to the same response across time and space. The war effects in Italy, a quite conservative country, which is strongly influenced by the Catholic Church, might differ importantly from those in the US or France. Second, we go beyond Abramitzky, Delavande, and Vasconcelos (2011) and look at heterogeneous responses to the war shock across Italian provinces. Depending on the efficiency of the marriage market or varying cultural attitudes, the effects on marriage patterns might differ across regions. In this respect, Italy is a unique case study because of stark regional differences in cultural attitudes and economic development (see Guiso et al. 2004, 2006, 2016). Third, we digitize novel province and municipality census data which had hitherto not been used.

We use individual-level data from the Italian Longitudinal Household Survey (*Indagine Longitudinale sulle Famiglie Italiane*, for short ILFI), which contains biographic information on all places of residence since birth and rich information about both marriage partners. We combine survey information with historical county-level data on the severity of the war in terms of mortality across genders. We find that, after WWII, men in areas with high mortality rates were more likely to marry more educated women. The effect is stronger in rural areas characterized by lower population density, suggesting that the stronger bargaining power of males in the marriage market, induced by the war shock, may provide higher returns in remote areas characterized by scarce infrastructures where larger, more efficient, marriage markets are typically inaccessible. We conclude

---

<sup>1</sup> Ichino and Winter-Ebmer (2004) do not look at marriage patterns, but at how children's education was affected by fathers' participation in war.

that changes in marriage patterns are ubiquitous but may also depend on marriage market characteristics.

The remainder of the paper is organized as follows. The next section gives the historical background of WWII in Italy. Section 3 discusses our identification strategy. Section 4 describes the data. Section 5 presents empirical results and section 6 concludes.

## 2. Historical Background

WWII was the most widespread war in history, with a mobilization of more than 100 million military personnel all over the world. It was also the deadliest conflict with over 60 million victims among military and civilians over a time span of only six years.<sup>2</sup> Compared to other countries, the death toll in Italy was relatively mild. With 456,000 victims over a population of 44,394,000 in 1939, the victimization rate was around 1.02 percent of the pre-war population, compared to 14.21 percent in the Soviet Union and 8 percent in Germany (Clodfelter, 2002). Yet there was considerable variability in WWII mortality across areas of the country. We document this using unique war statistics released by the Italian National Bureau of Statistics (1957).

[Figure 1 about here]

Figure 1 presents the monthly dynamics in deaths for soldiers - panel (a) - and for male and female civilians - panels (b) and (c). Italy entered the war in June 1940 by declaring war on Britain and France. It invaded Southern France and was later involved in campaigns in Africa and in Eastern Europe (e.g. in the Russian Campaign which included the battle of Stalingrad) and in South Eastern Europe. The military action started on Italian soil only after 1942. This explains why the civilian death toll was essentially zero before 1943 and only soldiers were killed. On July 10<sup>th</sup>, 1943, a combined force of British and American troops invaded Sicily. On July 19<sup>th</sup>, an Allied air raid on Rome destroyed both military and collateral civilian installations. The precipitating events led to the destitution and incarceration of Mussolini on July 25<sup>th</sup> and the signature of the Cassibile

---

<sup>2</sup> This notion has been recently questioned by Pinker (2011) who claims that if we consider the number of WWII casualties as a proportion of world population then previous historical episodes of violence may largely outnumber WWII. However, many of such episodes, such as the Arab slave trade or the Mongol conquest took place over much longer time spans when compared to WWII (respectively around a thousand years and nearly a century, compared to six years of WWII).

Armistice with the Allies on September 8<sup>th</sup>. This resulted in the disbandment of the Italian Army and the occupation of the country by the German Army from the Alps to Naples, with a dramatic increase in combats on national soil. The three panels of Figure 1 reflect these events. After 1943, male civilians were killed in roughly equal numbers as soldiers. However, the number of dead female civilians was consistently lower than that of male civilians. This fact possibly followed from the larger involvement of male civilians in combat and resistance activities against the German occupation, and from the escape of females and children from combat areas and cities, whose infrastructures were subject to frequent aerial bombing after the Armistice.

[Figure 2 about here]

The war related death figures were characterized by a large variability within region and across macro regions. This can be seen from Figure 2, which displays the total wartime male casualties (soldiers and civilians) as a fraction of the resident population in 1936, as measured by census data. The distribution by province of residence is considered. For instance, the fraction of males who died in war was 0.78 percent in the northern province of Bolzano compared to 5.7 percent in southern province of Benevento. Contrary to the examples above, the province of Belluno, close to the Bolzano border, suffered a 3.2 percent loss while Palermo, in the South, lost only 1 percent.

War related deaths do not follow an obvious geographical pattern, which is most likely the reflection of how drafting was carried out by the Italian Army at the time. According to the 1935 “conscription” (“reclutamento”) entry of the Treccani Encyclopedia, the drafting was universal and was not based on criteria that may correlate ex-ante with life risk, especially considering that the unfolding of the war events was not predictable at the time of drafting.<sup>3</sup> One notable exception is between areas that were occupied by the Germans or affected by allied bombing (in Northern and Central Italy) and those areas that were not (all Southern provinces excluding Molise, Caserta and Benevento, the Northern part of the Campania region). Our empirical investigation exploits the local variation in the percentage of males who died or were lost during WWII as the driving

---

<sup>3</sup> [http://www.treccani.it/enciclopedia/reclutamento\\_\(Enciclopedia-Italiana\)/](http://www.treccani.it/enciclopedia/reclutamento_(Enciclopedia-Italiana)/).

force of changes in marriage patterns. We also explore heterogeneity in the treatment effect, depending on local conditions.

### 3. Regression analysis

Our primary units of analysis are marriages. Our marriage outcome is measured by a dummy for whether the wife is at least as educated as the husband. We can see from the descriptive statistics that, on average, wives are about one year less educated than husbands, i.e. finding a wife that is at least as educated favorably compares to the average marriage outcome of husbands. The match behind husband and wife is the result of marriage market bargaining forces, with individuals competing for better partners given the available stock.

We consider the following regression ( $i$  is marriage,  $p$  is province,  $r$  is region,  $t$  is year of marriage):

$$y_{ipt} = \varphi \cdot POST \cdot m_p + X'_{ipt}\beta + \mu_p + \gamma_t + \zeta t d_r + \epsilon_{ipt},$$

where  $y_{ipt}$  is the marriage outcome measured by a dummy for whether the wife is at least as educated as the husband,  $X_{i,p,t}$  is a set of controls at the marriage level, i.e. dummies for husband's educational attainment and quadratic polynomials in husband's and wife's age at the time of marriage,  $\mu_p$  is a province effect,  $\gamma_t$  is an effect for the year of marriage, and, in our richest specification,  $\zeta t d_r$  is a regional linear trend.<sup>4</sup>

The parameter of interest is  $\varphi$  and measures whether provinces subject to a relatively higher number of wartime casualties experienced a larger improvement of the husband marriage market returns in terms of wife's education, comparing pre and post war marriages at the province-level. This is identified by including an interaction between the treatment intensity measured by the war related mortality  $m_p$  in each province  $p$  and a post war dummy  $POST$ . Standard errors are clustered at the province-level, as this is the level of variation of the mortality variable.

---

<sup>4</sup> To account for few cases with missing age, we included in the regression dummies for records with missing data and replaced to zero the missing observation.



The province-level war shock  $m_p$  is the cumulative number of male deaths during WWII over male resident population in 1936, and it is standardized to have zero mean and unit variance in the sample. We maintain the identifying assumption that assortative matching resulting in a marriage would have changed similarly across provinces from before to after WWII, net of compositional differences in the population at baseline, had all provinces experienced the same war shock (or had WWII not happened). The fact that the shock is as good as randomly assigned across provinces in the same region, as we will discuss below, corroborates the validity of this assumption. We also rely on the assumption that WWII did not affect educational attainment of males and females in a different fashion. This is confirmed by the inspection of the educational patterns' dynamics in Italy around the war years in Figure 3. Any difference in education within couples should then be imputed to changes in matching patterns rather than a direct selective effect of war on husbands' education.

[Figure 3 about here]

## 4. Data

### 4.1 The Italian Household Longitudinal Survey

We use data from the *Indagine Longitudinale sulle Famiglie Italiane* (ILFI; the Italian Household Longitudinal Survey), a longitudinal survey started in 1997 by the University of Trento, the Istituto Trentino di Cultura and the Italian National Bureau of Statistics (ISTAT).<sup>5</sup> This survey consists of a sample of 9,770 individuals, in 4,457 households, representative of the national population. We use only the 1997 wave, as this is the closest year to WWII. ILFI is a unique source of data for our research question and has been given scant attention by economists to date. For all interviewees, retrospective information is available about educational choices, employment, family, and residential history over their life. Importantly, information on the socio-economic background of the family of origin is also collected.

Since the first ILFI wave was carried out in 1997, i.e. 52 years after the end of WWII, only (few) respondents are old enough to have entered the marriage market around WWII.

---

<sup>5</sup> See <https://www.unidata.unimib.it/old/ita/abstract.php?id=21>

Luckily, we also have retrospective outcomes and demographics for *parents* of ILFI respondents. However, although information on the socio-economic background and the year of birth of parents is collected, the ILFI questionnaire does not elicit the wedding year of the parents. In what follows, we proxy this variable with the year of birth of the ILFI respondent or that of his/her first-born sibling. The implicit, but reasonable, assumption here is that the time lag between marriage and the birth of the first child was negligible in the years around WWII.

Our working sample consists of two group of individuals married between 1930 and 1955. Specifically, we keep both parents of ILFI respondents (1,142 marriages) and older ILFI respondents (288 marriages) falling in this window. Cohorts in our analysis are indexed to the year of marriage, which varies in a time interval of plus/minus 12 years from 1943 (the mid-WWII year). This choice leaves us with a sample of 1,430 marriages for which summary statistics are presented in Table 1, separately for the pre- and post-WWII cohorts.

#### **4.2. Census and other administrative data**

Survey information from ILFI was combined with data from four different population censuses: 1931, 1936, 1951, and 1961 (see ISTAT 1933, 1937, 1954 and 1963). The different sources were merged using the province of marriage reported in ILFI. As a result of the loss of the Istrian territories, sanctioned by the Paris Peace Treaty in 1947, we consider 90 administrative provinces that can be matched before and after the war.

Key in our analysis is information on war casualties coming from ISTAT (1957), which contains detailed data at national and provincial level on war related dead (both military and civilian) and missing from June 10<sup>th</sup>, 1940 to December 31<sup>st</sup>, 1945. The publication was produced jointly with the Italian Ministry of Defense and contains time series data at national level accounting for places of death, causes of death, and other characteristics of the deceased. In addition, province-level statistics are provided by province of birth, province of residence, and province of death (for both soldiers and civilians).

## 5. Descriptive and Graphical Evidence

The marriage market was largely frozen during war years, especially across younger age groups, as shown in Figure 4. WWII constituted a tremendous shock on the lives of young Italians at the time, not only because of the direct involvement in combat of young males, but also because of the devastation and suffering that followed on Italian soil. This resulted in dramatic consequences in regard to marriage patterns. At the time males were used to marrying generally later than females, more frequently in their late twenties, compared to females who were marrying more in their early twenties.

[Figure 4 about here]

During the war, both males and females chose to postpone their marriage choices to better times, as shown in Figure 5. The reduction in marriages from 1940 to 1945 was in part offset by the increase in post war years. Indeed, in the years following 1945 both males and females married at older ages if compared to their peers in pre-1945 years. However, the conditions of the marriage market were then changed due to the consequences of the war. The loss of lives, mainly concentrated on young male soldiers and combatants, determined an imbalance in the gender composition of the marriage market's active population. The surviving single males actively searching for a spouse found themselves in a better bargaining position given the relative decrease in the supply of males with respect to females.

[Figure 5 about here]

Figure 6 uses census data to show how the sex ratio changed across Italian provinces between 1936 and 1951. A negative trend emerges, with sizeable variation across provinces. As shown in Figure 2, the incidence of war related male deaths did not follow a clear geographical pattern, if we exclude the fact that post-Armistice battles on national soil mainly took place in Central and Northern Italy. However, if we consider within regional variation, Figure 2 also shows great variation in the distribution of war casualties. This variation most likely reflects random events such as the composition of army battalions and their world areas of deployment (with Russia and the Balkans being the deadliest) as well as the development of war events across the peninsula and within each region.

[Figure 6 about here]

Similar patterns hold at the municipality level. Figure 7 displays sex ratios for all Italian municipalities (of which there are about 7,300, administratively defined as “comune”) from 1936 and 1951 Census data.<sup>6</sup> Looking at the linear fit in the figure, a general reduction in the sex ratio is evident (the estimated slope being around 0.6). Figure 6 displays changes to sex-ratios calculated for the total population. However, these changes may be even larger if we consider only the population actively engaged in the marriage market. While the dead and missing civilians were mostly concentrated among the very young (under 20) and the mature (above 50), dead and missing soldiers were mainly those between 20 and 30, i.e., those males who may better represent potential candidates for marriage (ISTAT, 1957).

[Figure 7 about here]

A well-known fact about Italy is its regional differences. Maps in Figure 8 provide a visual inspection of pre-war differences across Italian provinces along several dimensions using the 1936 census. Panel A shows that population was concentrated around the largest and most important towns, such as Genova and Milan in the Northwest, Venice and Trieste in the North-East, and Florence, Rome, and Naples in the Centre-South. Vast areas characterized by very low density extend over the mostly Alpine region of Trentino-Alto Adige, in Eastern Piemonte, Southern Tuscany, Umbria, Northern Puglia, Basilicata, and Sardinia.

[Figure 8 about here]

Variability in population density should not be confounded with a simple industrial versus agricultural classification of provinces. Panel B of Figure 8 displays the employment share in agriculture that, despite being correlated with low levels of urbanization, presents some interesting variation. The largest share in agriculture was mostly concentrated along the Apennines, with relevant clusters scattered along all latitudes. Even the Northern regions were characterized by large shares in agriculture, especially in Piemonte, Emilia Romagna, Veneto, Trentino, and Friuli.

---

<sup>6</sup> In order to have a more readable picture here we drop eight outlier towns with either a sex ratio in 1951 greater than 1.5 or a sex ratio in 1936 lower than 0.4 or greater than 1.5.

The most important social divide between Northern and Southern regions in the early 1930s was illiteracy. Panels C and D of Figure 8 shows the illiteracy rate for men and women in 1931, pointing to a vastly illiterate South compared to a much more literate North. The difference is huge and striking in some Southern provinces the illiteracy rate could reach almost 60 percent for women and 50 percent for men. In the North, provincial illiteracy rates could be as low as 2 percent for both genders.

To capture a key aspect of Italy's diverse geography that may influence marriage market efficiency, panel E of Figure 8 display average provincial altitude. Arguably, in more mountainous areas, interaction across villages and towns is less pronounced than in the plains where transport is easier all year round.

Provincial characteristics do not predict the change in sex-ratios from before to after WWII, as shown in Table 2. Column (1) here reports results from a regression of the ratio between the sex-ratios in 1951 and 1936, computed by province, on region dummies (to capture differential severity of the war across different broad areas of Italy), and province-level variables capturing the degree of development measured before WWII. More precisely, these variables consist of population density in 1936, employment shares in agriculture and industry in 1936, illiteracy rate in 1931, and province altitude, latitude, and longitude. There are regional patterns in the changes in sex ratios, as can be seen from the p-value of the joint significance of the coefficients on region dummies. This reflects the fact that the war was overall more severe in the North and Centre of the country, as we saw in Figure 2. However, provincial characteristics are not significant in the regression conditional on region fixed effects. In column (2), we use the male casualty rate as an outcome and ask the same question: can we predict variation in war casualties across provinces within regions by provincial characteristics? The answer is again negative: provincial characteristics do not predict war casualties. We take this as evidence supporting our use of the male casualty rate as our war shock variable. In other words, we consider the within-region male casualty rate as an exogenous shock.

[Table 2 about here]

Finally, our data weigh against any gendered effect of WWII on the educational attainment at marriage. This can be seen from Figure 3, introduced above, which presents the average education of male and female spouses in the sample by year of marriage (from

1930 to 1955). The educational levels of spouses follow a very similar pattern, with a general positive trend. This evidence supports the idea that WWII had indeed an impact on the sex-ratio but not on educational attainment of married males with respect to married females. This in turn suggests that any empirical finding pointing to an effect of the war shock on the difference in educational attainment between husbands and wives should be imputed to the implied change in the relative bargaining power of males with respect to females, rather than to any direct effect of the shock on educational patterns.

## 6. Results

### 6.1 The war shock and marrying up

Table 3 reports our first set of estimates. The first three columns use as outcome an indicator for wives who completed at least five years of schooling (elementary education), whereas in the last three columns the outcome is a dummy for whether the wife is at least as educated as the husband. As seen from the descriptive statistics, on average, wives are about one year less educated than husbands, therefore finding a wife that is at least as educated favorably compares to the average marriage outcome of husbands.

[Table 3 about here]

Our baseline specification, in columns 1 and 3 of Table 3, includes on the right-hand side of equations a full set of province fixed effects, a full set of indicators for educational attainment of the husband, and a dummy for observations referring to ILFI respondents as opposed to parents of ILFI respondents, as we explained in Section 4.1. Columns 2 and 5 of the table add quadratic polynomials in husband's and wife's age. Our preferred specifications are the ones in columns 3 and 6, where in addition to the variables above we include region-specific linear trends for the twenty administrative regions of the country. As the WWII shock variable in the regressions is standardized to have mean zero and unit variance, all coefficients in Table 3 should be interpreted as the causal effect of a one standard deviation ( $\sigma$  for short) increase in the province-level mortality rate on the outcome of interest, which we standardize as well.

After WWII, in provinces with more male war casualties, husbands were more likely to marry more educated women. For example, a one  $\sigma$  increase in the WWII shock in

column 1 increased by about 6%  $\sigma$  the share of women with least elementary education at the time of their wedding. In column 6, the effect on the probability of wives being at least as educated as their husband was about 12%  $\sigma$ . The WWII shock intensity pushed both our outcomes up, although the effect was statistically significant only for the latter “marrying up” outcome, as is evident from the last three columns of Table 3. For conceptual reasons, these are our preferred columns in the table because they directly relate a wife’s and husband’s education. The general conclusion remains valid across specifications, although differences in effect size across outcomes become slightly stronger when regional trends are controlled for in the analysis.

## 6.2 Heterogeneous effects across provinces

Results in Table 3 assume that a WWII shock of similar size affected all provinces in a similar fashion, i.e., that irrespective of the structural and institutional characteristics of each province and its local marriage market, an increase in the bargaining power of males accounted for *identical* gains in terms of the resulting matches.

Here we investigate the possible heterogeneity arising from market density and other factors along the urban/rural dimension. A number of mechanisms may be at play here. A first source of heterogeneity may stem from the fact that while in rural areas individuals were constrained to meet fewer potential marriage partners, urban areas were characterized by more dynamic inter-personal relationships and may in principle offer more scope to take advantage of fewer males on the marriage market. In this case, the increased bargaining power of single males may have yielded greater gains in more flexible markets, those where demand and supply met more efficiently because of more potential partners. In addition, in urban areas there should be more room to increase the educational content of the match. For example, a single male may have found it harder to use his increased bargaining power in rural areas, where less females were available and average educational attainment was more compressed. In principle this should result in a higher probability of marrying up.

On the other hand, however, the argument may be reversed. Despite being less efficient than urban markets, since males could meet fewer potential partners, more segmented rural markets were also typically characterized by lower information asymmetry about potential matches. Yet, the degree of competition in denser urban markets may have been too fierce to exploit the advantage. It may therefore be the case

that the males' bargaining power advantage induced by WWII casualties was larger in less urbanized markets as a result.

A further potential source of heterogeneity comes from cultural factors. In more traditional areas there may be no scope for marrying up because of cultural resistance. In these areas, education may have not been such a desirable feature for a woman: husbands may prefer not to marry a more educated wife because of local cultural and social norms that would not view that not as an achievement but rather an inconvenience. For example, this may be particularly relevant in those provinces characterized by a strong male chauvinistic sentiment, where the ideal wife would be rather submissive to her husband. In this respect, more education may get in the way of submission. An increased bargaining power for males should then translate in different match features and we might not observe an increase in relative education of wives with respect to husbands.

However, more backward areas may also be characterized by a stronger desire to escape socio-economic disadvantage and increasing the average educational attainment in the family may be one way of improving its economic prospects. Such a factor may dominate any cultural motive to perpetuate traditional subjugation of females and a more educated wife may be welcomed in rural contexts.

[Table 4 about here]

We investigate whether the effect of the war shock was heterogeneous across provinces according to measures of population (and hence marriage market) density or, alternatively, to some cultural and socio-economic factors by areas. Specifically, panels in Table 4 investigate the heterogeneity of WWII effects using four province-level variables measured from the 1936 census: the employment share in agriculture (Panel A); the share of residents in the province living in municipalities with more than 10,000 inhabitants (Panel B); population density (Panel C); average altitude of municipalities in the province (Panel D). Table 4 presents results from the same regression specifications considered in Table 3, estimated from mutually exclusive samples defined from the 1936 census variables. The first three columns of each panel show results using provinces with values of the census variable below the sample median; the three remaining columns are for provinces above the sample median. For example, the first three columns of Table 4 consider provinces which in 1936 were relatively less agricultural (Panel A), with a lower



population share in large urban centres – above 10,000 inhabitants (panel B); less densely populated (Panel C), less mountainous (Panel D).

What is the reason for studying WWII heterogeneity along these dimensions? Population density is a possible proxy for market density. Denser areas are characterized by more intense exchanges between supply and demand on the marriage market, and therefore outcomes may more easily reflect the bargaining power structure of each player due to this agglomeration effect (Glaeser, 2011). Such a simple density measure may however hide the specific characteristics of demographic distribution across the province, for example due to the fact that areas outside large towns may be characterized by low population densities, despite being part of a province where the overall population density is high. As our main measure of an urban-rural divide, we therefore use the proportion of the population in the province living in towns of more than 10,000 inhabitants, which corresponds to ISTAT's definition of large municipalities.

One relevant dimension that reflects possible cultural and socio-economic factors affecting marriages is the extent of substitution of the traditional agricultural economy with more modern industrial or tertiary activities. Traditionally, the Italian rural society was characterized by a rigid patriarchal structure, with few exceptions (Corti, 1992). The secular structural transformation of the Italian economy embodies fundamental changes in the way social and interpersonal relationships are conceived, with likely consequences on the relation between male and females, and more generally on the role of women in society. The population living in urban centers was also typically richer and more educated than the one living in rural and more mountainous areas, and therefore a marginal increase in education in the family may have a different impact in those contexts (Felice and Vasta, 2015 and Vecchi, 2017). Figure 8 shows that population density and the employment share in the traditional agricultural sector, despite being correlated, do not coincide.

Because of WWII, the share of men marrying up was higher in provinces with an *above*-median employment share in agriculture. This can be seen from Table 4, where the effects in columns 4-6 of Panel A are between 15%  $\sigma$  and 16%  $\sigma$  and twice as large as the effects in columns 1-3 (effects in these columns are also not statistically different from zero). Consistent with this finding, the effects in columns 1-3 for Panel B are generally much larger for provinces with *below*-median population share in towns over 10,000

inhabitants (the large coefficient in column 6 of Panel B is the only exception to this pattern). The effects by population density in the province overall (i.e. averaging across urban and rural areas), in Panel C, are – not surprisingly – less clear-cut. Ignoring statistical significance, point estimates in columns 1-3 of this panel are very similar to estimates in columns 4-6. We show these results for transparency, but we consider the measure in panel B to be the one better capturing the urban-rural divide. Finally, in provinces with above-median altitude, effects are between 14%  $\sigma$  and 17%  $\sigma$  – see Panel D – and almost three times as large as in the remaining provinces.

Taking stock of our analysis on effect heterogeneity, we conclude that WWII affected marriage patterns more strongly in more agriculturally dominated provinces, in provinces with a larger share of population living *outside* large towns, and in more mountainous provinces. In these areas, males were better able to exploit their increased bargaining power than in urbanized and more developed areas. A possible caveat here is that we are underpowered for assessing statistical differences between the first block (1-3) and the second block (4-6) of columns of each panel in Table 4. Formal tests for differences between blocks of each panel – not presented here for brevity – fail to reject the null hypothesis in almost all cases, suggesting that our limited sample is not suited to reach a definite conclusion on effect heterogeneity.

## 7. Conclusions

We have investigated how the exogenous shock induced by World War II on the sex ratio, i.e., the ratio of males to females, affected marriage patterns across Italian provinces. The number of marriages decreased during the war years, since most marriages were postponed to the post-war years. However, as a result of the war losses sex ratios generally decreased in most provinces. The deaths of young males affected the pre-war equilibrium in the marriage market by reducing the number of available males with respect to females, thereby increasing the bargaining power of surviving single males on the market because fewer males were available as potential partners with respect to females. Within this framework, an increase in the relative scarcity of males, induced by the war shock, should have increased a male's ability to marry a more desirable partner in post-war years.

We have found that after WWII, surviving males in provinces with more male war casualties married relatively more educated women. We have considered potential sources of regional heterogeneity in the way the shock to the marriage market affected marriage patterns. We tested whether the increased bargaining power of single males may allow greater gains in urban markets where, being easier to meet more potential marriage partners, demand and supply meet more efficiently, or in sparser rural markets, where the returns to the shock may be larger due to less information asymmetries, competition, and saturation. In addition, in urban areas there should be more room to increase the educational content of the match, whereas in more traditional areas there may be no scope for marrying up because of cultural resistance. We have found that the effect of the WWII shock were more pronounced in sparsely populated, agricultural, and mountainous areas where a larger reduction in the relative supply of males induced by the war imply higher gains for the surviving males with respect to more industrial and urban areas in the plains.

These findings contribute to our understanding of marriage patterns and how those are influenced both by the supply of men and women, as well as by marriage market efficiency and cultural factors.

### References

Abramitzky, Ran, Adeline Delavande, and Luis Vasconcelos (2011) “Marrying Up: The Role of Sex Ratio in Assortative Matching,” *American Economic Journal: Applied Economics* 3(3), 124-157.

Acemoglu, Daron, David H. Autor, and David Lyle (2004) “Women, War and Wages: The Effect of Female Labor Supply on the Wage Structure at Mid-Century”, *Journal of Political Economy* 112(3), 497-551.

Angrist, Joshua D. (2002) “How Do Sex Ratios Affect Marriage and Labor Markets - Evidence from Americas Second Generation”, *Quarterly Journal of Economics* 117(3), 997-1038.

Becker, Gary S. (1981) *A Treatise on the Family*, Cambridge: Harvard University Press.

Bethmann, Dirk and Michael Kvasnicka (2013) “World War II, Missing Men and Out of Wedlock Childbearing”, *The Economic Journal* 123(567): 162-194.

Brainerd, Elizabeth (2017) “The Lasting Effect of Sex Ratio Imbalance on Marriage and Family: Evidence from World War II in Russia”, *Review of Economics and Statistics* 99(2): 229-242.

Chiappori, Pierre-André, Bernard Fortin, and Guy Lacroix (2001) “Marriage Market, Divorce Legislation, and Household Labor Supply”, *Journal of Political Economy*, 110(1): 37-72.

Clodfelter, Micheal (2002) *Warfare and Armed Conflicts: A Statistical Reference to Casualty and Other Figures, 1500-2000*, McFarland & Company.

Corti, Paola (1992) *Le donne nelle campagne italiane del Novecento*. Bologna: Il Mulino.

Felice, E and M Vasta (2015), “Passive modernization? The new human development index and its component in Italy’s regions (1871-2007)”, *European Review of Economic History* 19: 44-66.

Fernandez, Raquel, Alessandra Fogli, and Claudia Olivetti (2004) “Mothers and Sons - Preference Formation and Female Labor Force Dynamics”, *Quarterly Journal of Economics* 119(4): 1249-1299.

Glaeser, Edward (2011) *Triumph of the City: How Our Greatest Invention Makes Us Richer, Smarter, Greener, Healthier, and Happier*, Penguin.

Guiso, Luigi, Paola Sapienza, and Luigi Zingales (2004) The Role of Social Capital in Financial Development, *American Economic Review* 94(3): 526–556.

Guiso, Luigi, Paola Sapienza, and Luigi Zingales (2006) Does Culture Affect Economic Outcomes? *Journal of Economic Perspectives* 20(2): 23–48.

Guiso, Luigi, Paola Sapienza, and Luigi Zingales (2016) Long-term-Persistence, *Journal of the European Economic Association* 14(6): 1401–1436.

Ichino, Andrea and Rudolf Winter-Ebmer (2004) “The Long-Run Educational Cost of World War Two”, *Journal of Labor Economics* 22(1): 57-86.

ISTAT (1933) *Censimento generale della popolazione, 21 aprile 1931*, Roma: Istituto Centrale Statistica.

ISTAT (1937) *Censimento generale della popolazione, 21 Aprile 1936*, Roma: Istituto Centrale Statistica.

ISTAT (1954) *Censimento generale della popolazione, 4 Novembre 1951*, Roma: Istituto Centrale Statistica.

ISTAT (1957) *Morti E Dispersi Per Cause Belliche Negli Anni 1940-45*, Roma: Istituto Centrale Statistica.

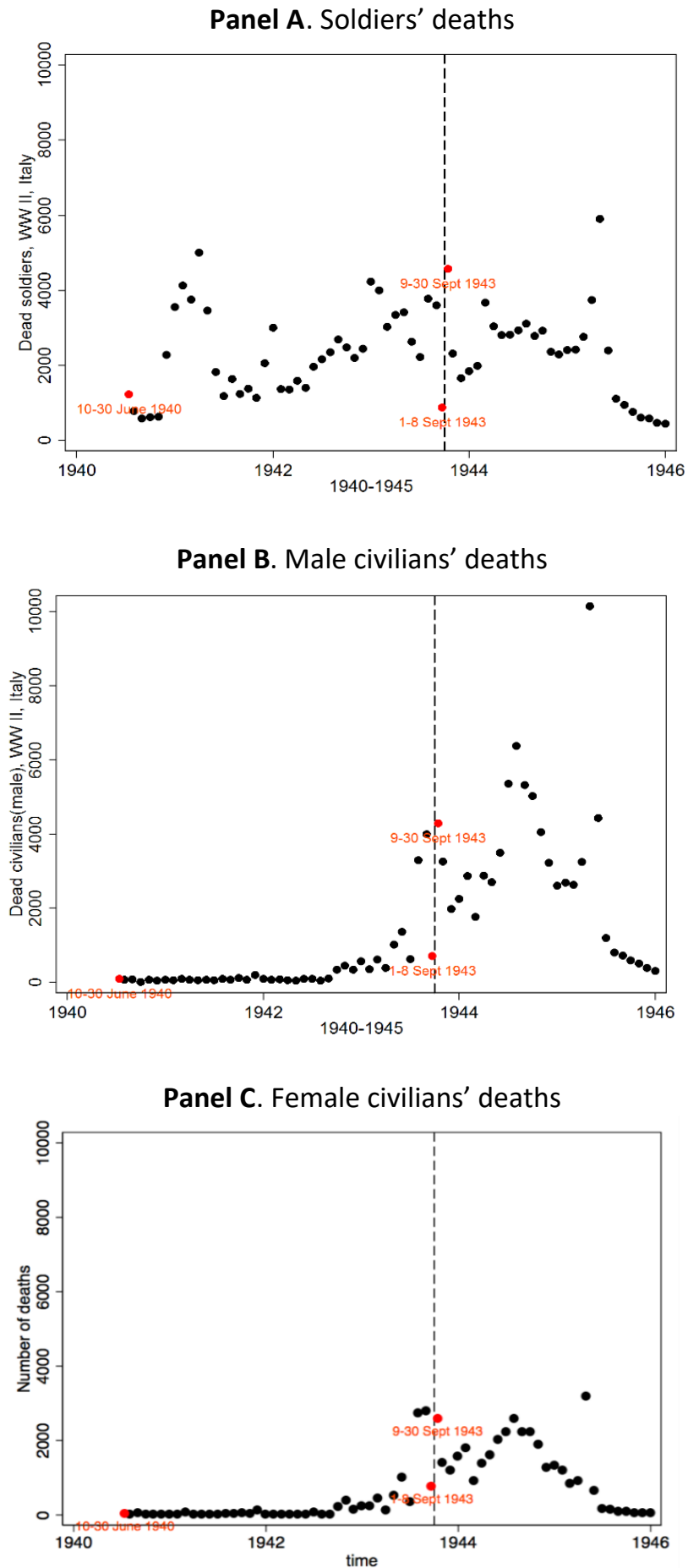
ISTAT (1963) *Censimento generale della popolazione, 15 Ottobre 1961*, Roma: Istituto Centrale Statistica.

Pinker, Steven (2011) *The Better Angels of our Nature*, New York: Viking.

Vecchi, G (2017) *Measuring Wellbeing: A History of Italian Living Standards*, Oxford: Oxford University Press.

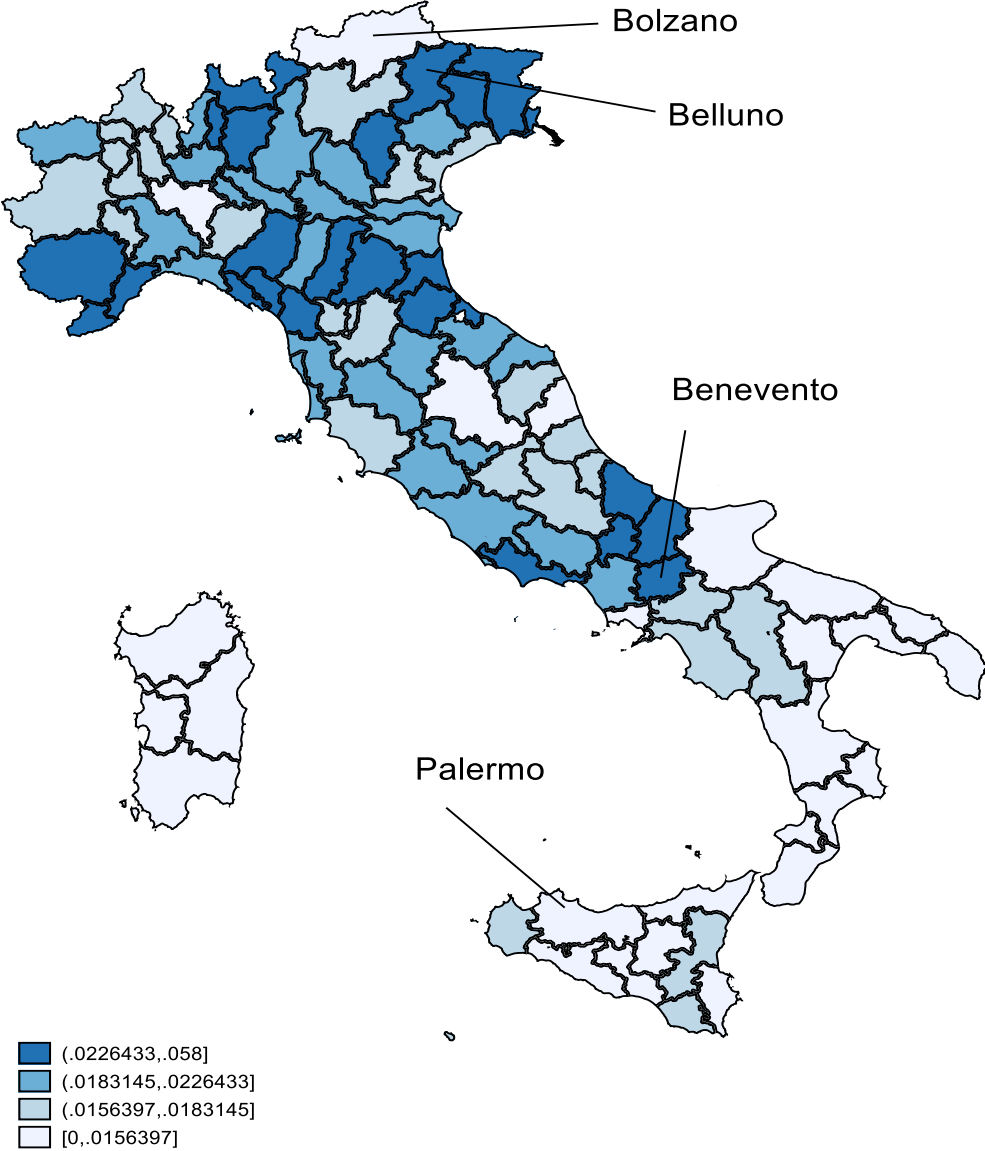
Voigtländer, Nico and Hans-Joachim Voth (2013) “The Three Horsemen of Riches: Plague, War, and Urbanization in Early Modern Europe”, *The Review of Economic Studies* 80(2): 774–811.

**Figure 1.** WWII monthly time series of deaths in Italy



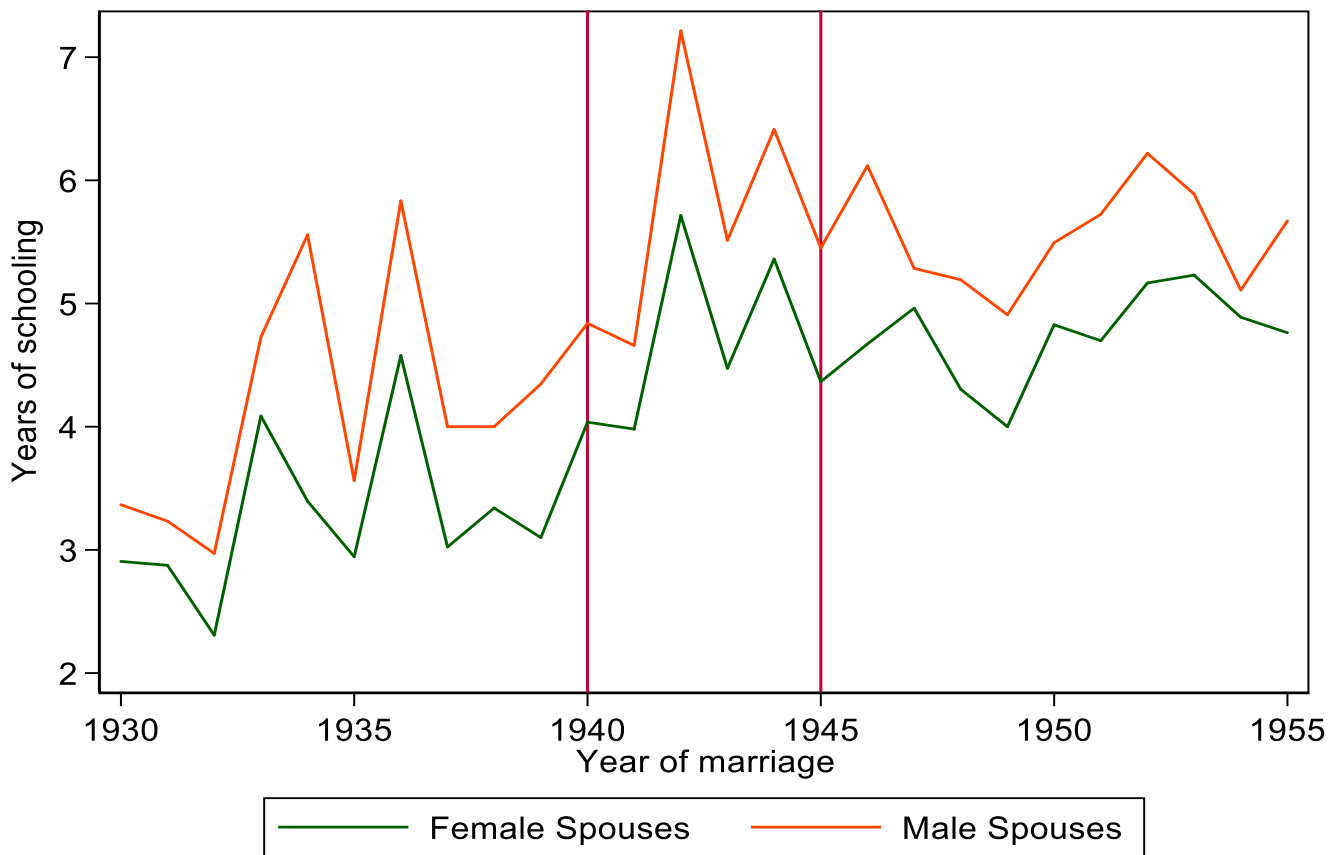
**Note.** This figure shows the time series of deaths for Italian soldiers (Panel A) and male (Panel B) and female (Panel C) civilians. Italy entered the war in June 1940, and military action started on Italian soil after 1942. The vertical line in panels marks the Cassibile Armistice (September 1943). Source: ISTAT (1957).

**Figure 2.** WWII male casualties (soldiers and civilians) as a fraction of resident population in 1936



**Note.** This figure shows the total wartime male casualties (soldiers and civilians) across Italian provinces as a fraction of the resident population in 1936. Source: ISTAT (1957).

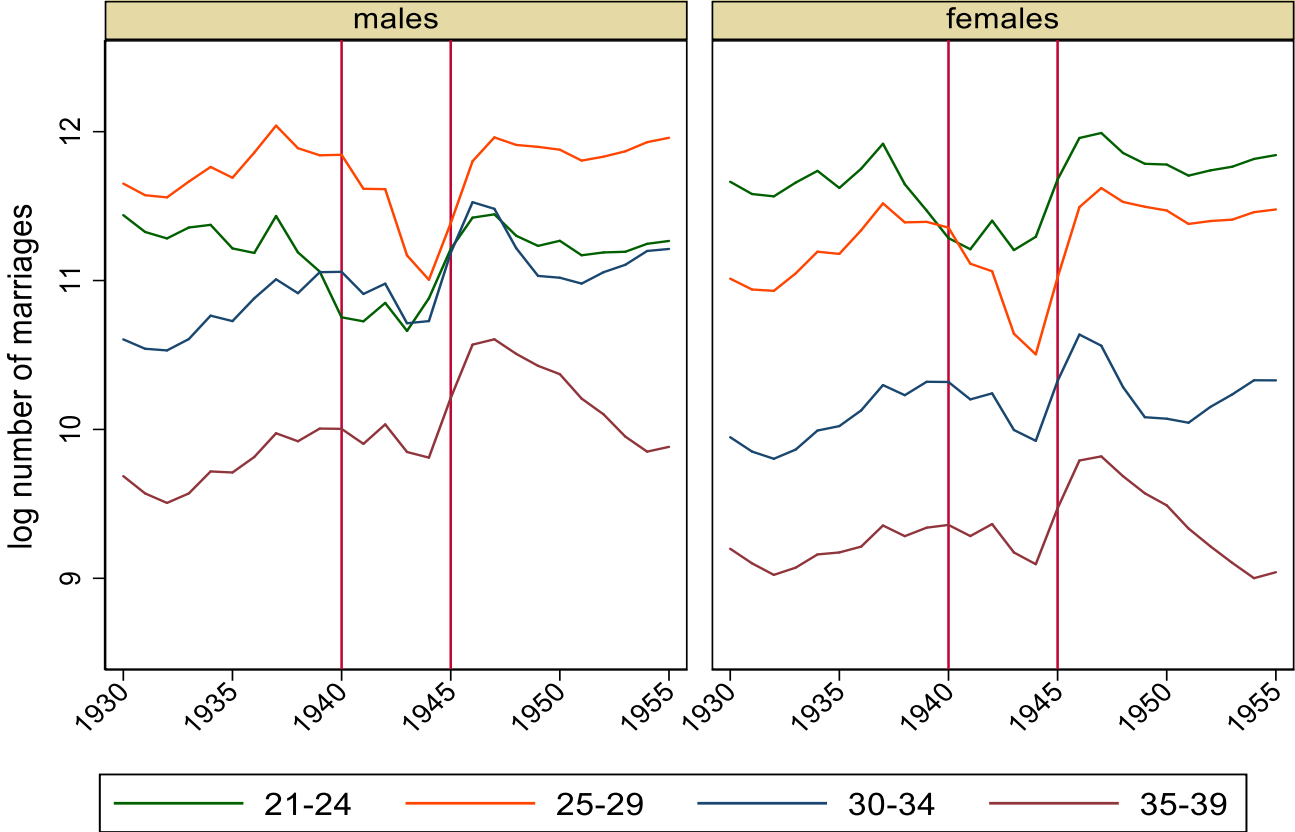
**Figure 3.** Educational attainment of spouses before and after WWII



**Note.** This figure shows the educational level (years of schooling) of male and female spouses by year of marriage (from 1930 to 1955). Source: 1997 ILFI data.

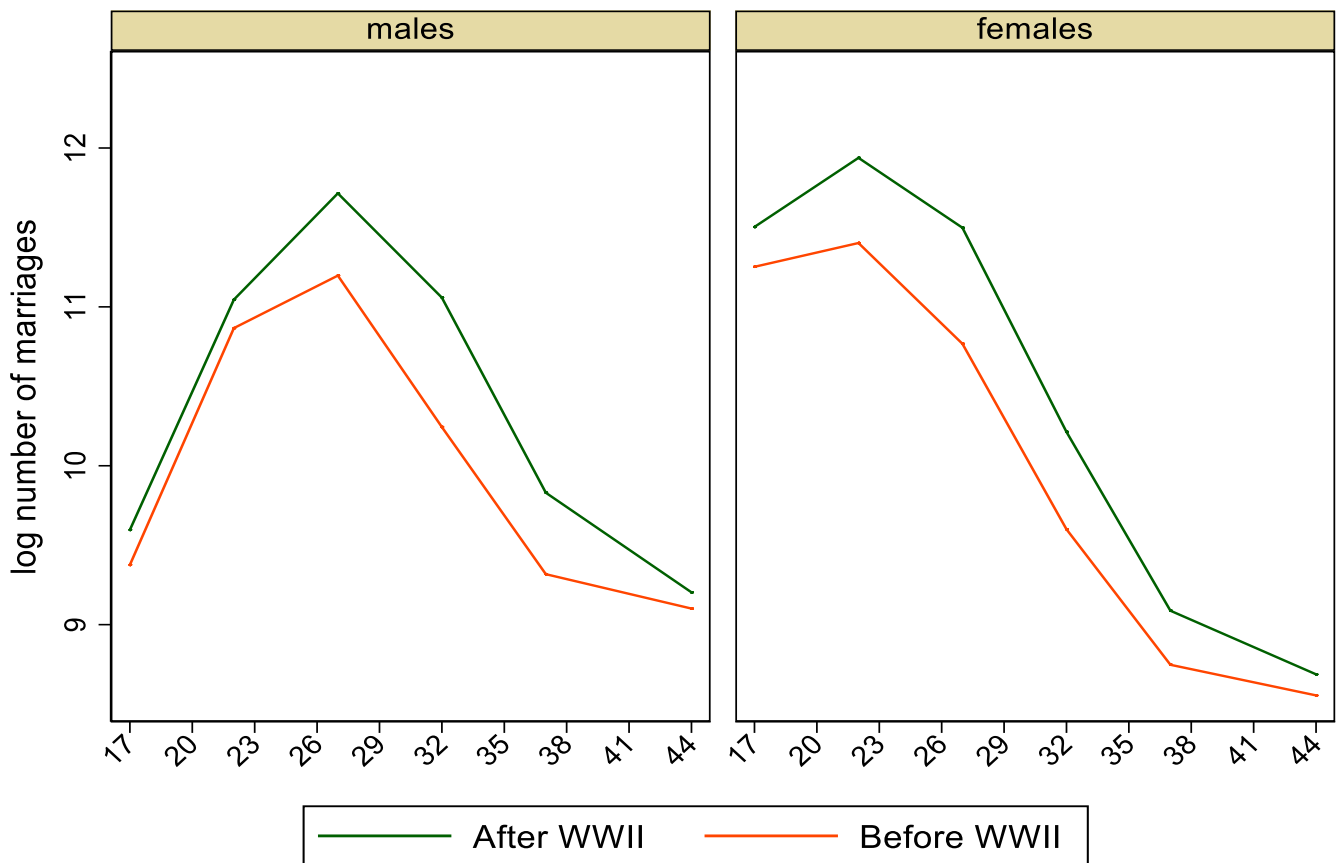


**Figure 4.** Marriages around WWII by age at marriage



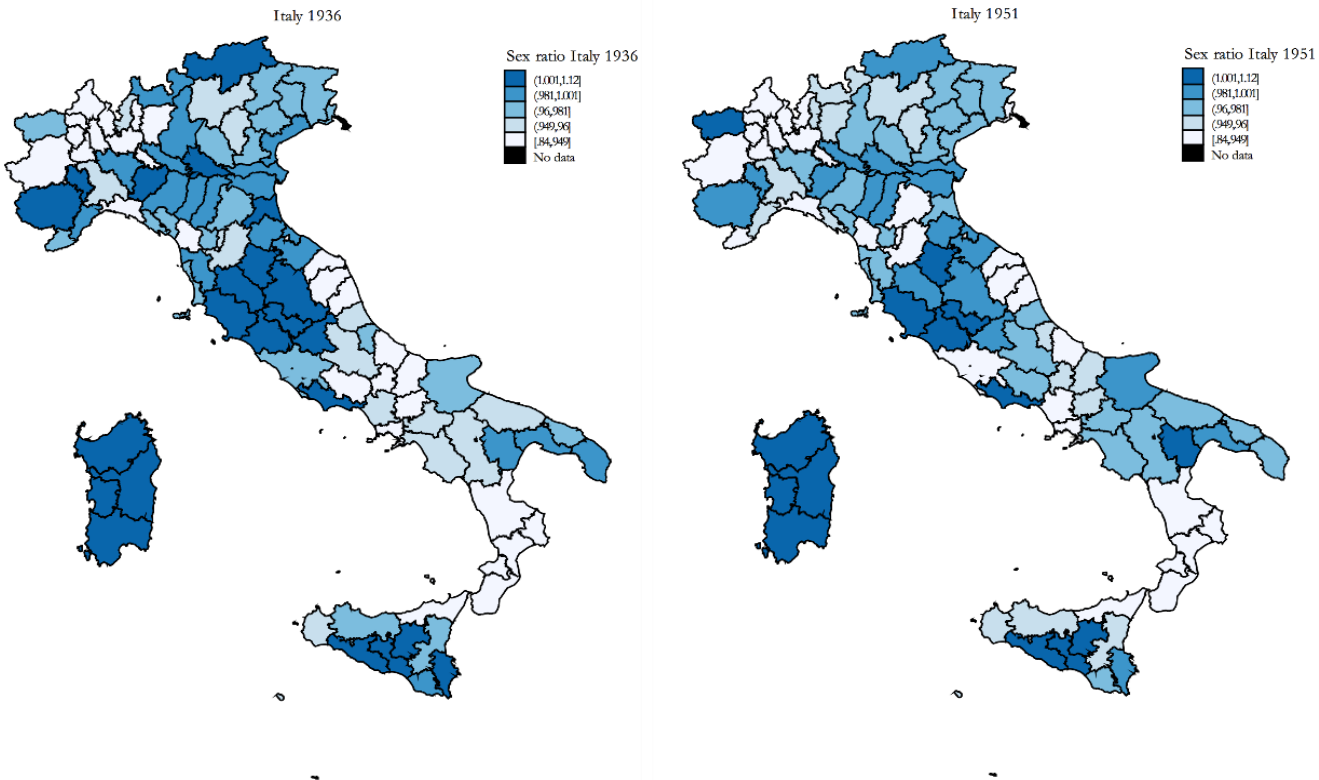
**Note.** This figure shows the time series of the number of marriages (in logs) by age at marriage, for men (left-hand side panel) and women (right-hand side panel), using all cohorts in the sample. Source: Italian censuses for 1936, 1951 and 1961.

**Figure 5.** Age at marriage profiles



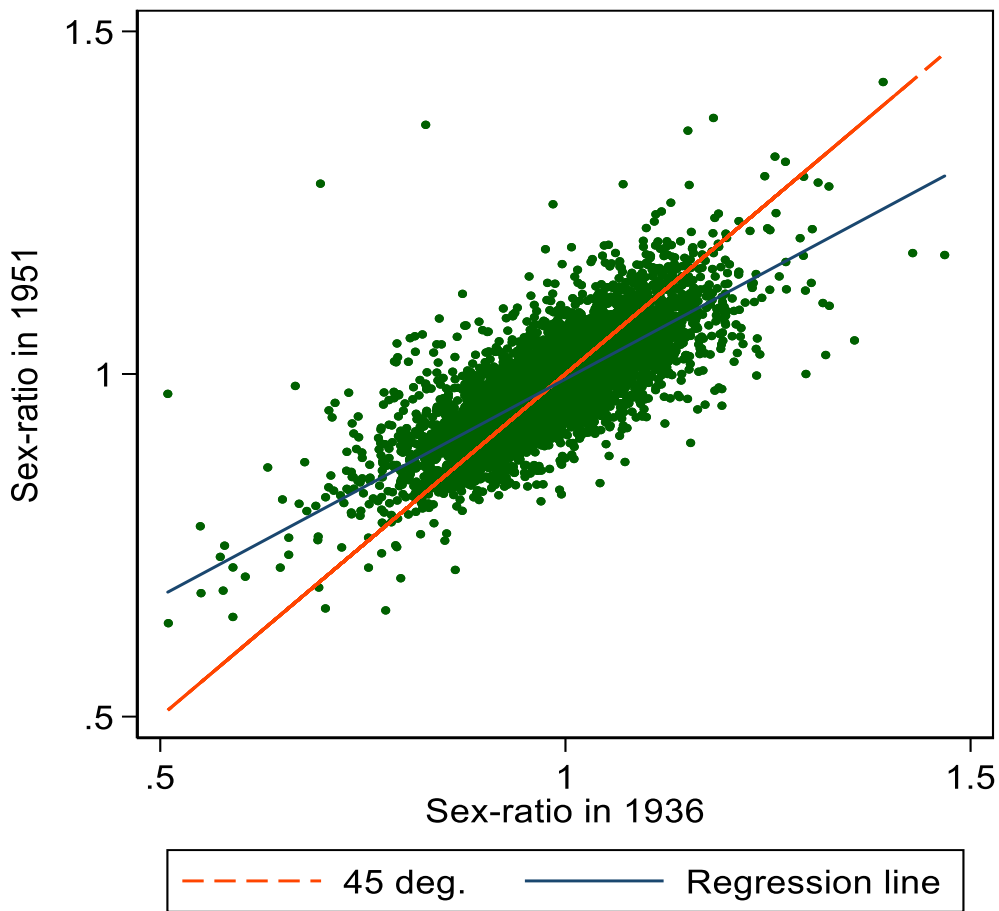
**Note.** This figure shows profiles for the number of marriages (in logs) by age at marriage, for men and women. The cohorts used in the empirical analysis are grouped before and after 1945. Source: Italian censuses for 1936, 1951 and 1961.

**Figure 6.** Sex-ratio in 1936 and 1951 across Italian provinces



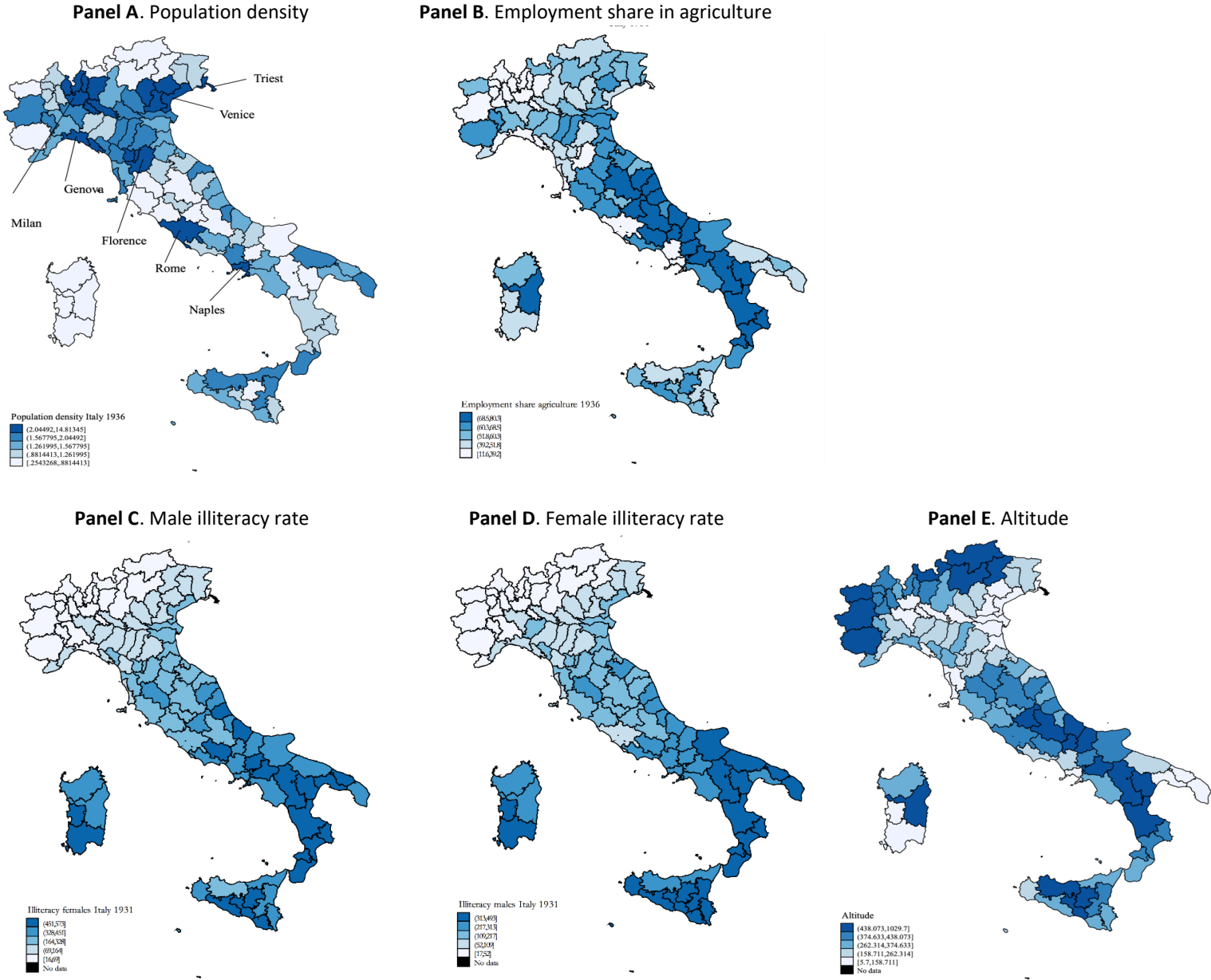
**Note.** This figure shows the sex-ratio (the relative number of men and women) across Italian provinces in 1936 and 1951. Values of sex-ratios are grouped using 1936 quintiles, with darker colors representing higher quintiles. Source: Italian Censuses 1936 and 1951.

**Figure 7.** Sex-ratio in 1936 and 1951 across Italian towns



**Note.** This figure shows the sex-ratio (the relative number of men and women) across Italian towns (*comune*) in 1936 and 1951. The linear fit is from a regression of sex-ratio in 1951 on sex-ratio in 1936. Source: Italian censuses for 1936 and 1951.

**Figure 8.** Pre-war province characteristics



**Note.** This figure shows population density (Panel A), the share of employment in agriculture (Panel B), the share of illiterate men (Panel C) and women (Panel D) and mean altitude (Panel E) across Italian provinces. Source: Italian census for 1936 (panels A, B and E); Italian census 1931 (panels C and D).

**Table 1.** Descriptive Statistics

	(1)	(2)	(3)	(4)
	<b>Before WWII</b>		<b>After WWII</b>	
	mean	sd	mean	sd
<b>Panel A. Demographics from ILFI</b>				
Education of wife	3.59	3.54	6.01	4.44
Wife's >= husband's education	0.77	0.42	0.73	0.45
Husband: completed five years	0.46	0.5	0.42	0.49
Husband: completed eight years	0.07	0.26	0.1	0.3
Husband: completed ten or more years of schooling	0.12	0.33	0.3	0.46
Age of husband	27.76	7.33	28.63	6.8
Age of wife	24.3	6.73	24.67	5.54
<b>Panel B. Census Demographics</b>				
Population density in 1936	2.12	2.32		
Altitude (in meters)	319.5	195.13		
Number of illiterate males per 1000 inhab. In 1931	166.49	129.05		
Employment share in agriculture in 1936	50.17	17.62		
Sex ratio (m/f) in 1936	0.97	0.03		
Observations	433		997	

**Note.** This table uses data for a sample of individuals married between 1930 and 1955 (1997 ILFI wave). Specifically, we keep parents of ILFI respondents (1,095 marriages) and ILFI respondents (287 marriages) in this time window. Cohorts are indexed to the year of marriage. Before WWII in columns (1) and (2) refers to the sample of marriages between 1930 and 1940. After WWII in columns (3) and (4) refers to the sample of marriages between 1945 and 1955. Panel A reports ILFI demographics. Panel B reports characteristics of the province of marriage in 1931 and 1936, which are obtained from Italian censuses.

**Table 2.** WWII casualties and pre-war census demographics

	(1)	(2)
	Sex ratio 1951/Sex Ratio 1936	Male war casualties/Males in 1936
Population density 1936	-0.001 (0.001)	-0.001 (0.001)
Employment share in agriculture 1936	0.000 (0.000)	0.000 (0.000)
Employment share in industry 1936	0.000 (0.001)	0.000 (0.000)
Illiteracy rate 1931	0.000 (0.000)	-0.000 (0.000)
Province altitude	-0.000 (0.000)	0.000 (0.000)
Province longitude	-0.112 (0.156)	0.020 (0.059)
Province latitude	0.435 (0.291)	0.021 (0.110)
Observations	90	90
Regional Dummies	YES	YES
P-value: regional dummies	0.0146	0.000214
P-value: province characteristics	0.717	0.112

**Note.** Province-level data are used to run regressions of outcomes on population density in 1936, employment shares in agriculture and industry in 1936, illiteracy rate in 1931, and province altitude, latitude and longitude. Column (1) shows results when the ratio between the sex-ratios in 1951 and 1936 is considered on the left-hand side. Column (2) shows results when the WWII male casualty rate is considered on the left-hand side. All regressions control for a full set of 20 regional dummies, and standard errors in parentheses are robust to heteroskedasticity. \*\*\* p<0.01, \*\* p<0.05, \* p<0.1

**Table 3.** WWII intensity and marriage market

	(1)	(2)	(3)	(4)	(5)	(6)
	Wife edu.	Wife edu.	Wife edu.	Wife edu.>= Husb.	Wife edu.>= Husb.	Wife edu.>= Husb.
POST - WWII SHOCK	0.0584 (0.0446)	0.0461 (0.0449)	0.0255 (0.0539)	0.111*** (0.0324)	0.108*** (0.0327)	0.119*** (0.0423)
Constant	-0.996*** (0.123)	-1.869*** (0.435)	-1.750*** (0.486)	0.601*** (0.155)	0.0864 (0.526)	-0.00950 (0.619)
Observations	1,430	1,430	1,430	1,430	1,430	1,430
Province FE	YES	YES	YES	YES	YES	YES
Controls	NO	YES	YES	NO	YES	YES
Region Trends	NO	NO	YES	NO	NO	YES

**Note.** This table shows results from baseline regressions. The outcome is wife's years of education in columns (1) to (3) and a dummy for whether the wife is at least as educated as the husband in columns (4) to (6). The variable POST - WWII SHOCK is an interaction between WWII intensity, which is measured by mortality in each province, and post war dummy POST. The province-level war shock is the cumulative number of male deaths during WWII over male resident population in 1936, and it is standardized to have zero mean and unit variance in the sample. The set of controls at the marriage level include dummies for husband's educational attainment and quadratic polynomials in husband's and wife's age at the time of marriage. In addition, a set of province fixed effects, marriage dummies and, in our richest specification, regional level linear trends, are included. Robust standard errors, reported in parentheses, are clustered at the province level, as this is the level of variation of the mortality variable. \*\*\* p<0.01, \*\* p<0.05, \* p<0.1



**Table 4.** Heterogeneous effects of WWII intensity across provinces

	(1)	(2)	(3)	(4)	(5)	(6)
<b>Panel A.</b> Employment share in the traditional agricultural sector						
POST • WWII SHOCK	0.0595 (0.0806)	0.0598 (0.0824)	0.0732 (0.136)	0.151*** (0.0320)	0.155*** (0.0328)	0.159*** (0.0509)
Constant	0.663*** (0.144)	-0.717 (0.868)	-0.691 (0.921)	0.505** (0.216)	0.833 (0.685)	0.561 (0.909)
Observations	708	708	708	722	722	722
<b>Panel B.</b> Population share in towns with over 10,000 inhabitants						
POST • WWII SHOCK	0.111*** (0.0313)	0.124*** (0.0316)	0.107** (0.0436)	0.0646 (0.105)	0.0517 (0.108)	0.216 (0.190)
Constant	0.717*** (0.216)	1.450** (0.712)	1.475* (0.794)	0.416* (0.214)	-1.167* (0.582)	-1.452** (0.663)
Observations	713	713	713	717	717	717
<b>Panel C.</b> Population density						
POST • WWII SHOCK	0.119*** (0.0312)	0.110*** (0.0325)	0.110** (0.0529)	0.105 (0.108)	0.113 (0.106)	0.183 (0.163)
Constant	0.620*** (0.221)	-0.198 (0.689)	-0.271 (0.758)	0.561** (0.207)	0.320 (0.821)	0.0745 (1.037)
Observations	715	715	715	715	715	715
<b>Panel D.</b> Altitude						
POST • WWII SHOCK	0.0614 (0.0509)	0.0591 (0.0523)	0.0644 (0.126)	0.172*** (0.0462)	0.167*** (0.0484)	0.148*** (0.0546)
Constant	0.623** (0.240)	0.444 (0.916)	0.488 (0.956)	0.602*** (0.218)	-0.0441 (0.663)	-0.213 (0.930)
Observations	686	686	686	744	744	744
Values wrt median	BELOW	BELOW	BELOW	ABOVE	ABOVE	ABOVE
Province FE	YES	YES	YES	YES	YES	YES
Controls	NO	YES	YES	NO	YES	YES
Region Trends	NO	NO	YES	NO	NO	YES

**Note.** This table presents regressions for heterogeneous effects along the following provincial characteristics: employment share in the traditional agricultural sector (panel A), population share in province living in towns with over 10,000 inhabitants (panel B), population density (panel C) and altitude (panel D). Results in columns (1) to (3) are from regressions for observations with provincial characteristics below the sample median. Columns (4) to (6) are for values of the provincial variable above the sample median. The outcome is a dummy for whether the wife is at least as educated as the husband. See Table 3 footnote for a definition of the remaining variables. Robust standard errors, reported in parentheses, are clustered at the