

A New Ricardian Model of Trade, Growth and Inequality

Sugata Marjit

Impressum:

CESifo Working Papers

ISSN 2364-1428 (electronic version)

Publisher and distributor: Munich Society for the Promotion of Economic Research - CESifo GmbH

The international platform of Ludwigs-Maximilians University's Center for Economic Studies and the ifo Institute

Poschingerstr. 5, 81679 Munich, Germany

Telephone +49 (0)89 2180-2740, Telefax +49 (0)89 2180-17845, email office@cesifo.de

Editor: Clemens Fuest

<https://www.cesifo.org/en/wp>

An electronic version of the paper may be downloaded

- from the SSRN website: www.SSRN.com
- from the RePEc website: www.RePEc.org
- from the CESifo website: <https://www.cesifo.org/en/wp>

A New Ricardian Model of Trade, Growth and Inequality

Abstract

The classical Wage Fund (Capital or Credit) framework is integrated with the simplest text-book version of the Ricardian model of comparative advantage, generating a model that replicates important features of the neo-classical production theory involving capital and labour without neo-classical assumptions. Interestingly the growth story of the model seems to be observationally equivalent to the Solow (1956) model of steady state growth. It can easily and effectively reflect on critical contemporary issues without the ammunitions of a more complex neo-classical system. Trade pampers inequality all across the globe independent of trade patterns. It is likely to increase growth rate but that rate declines over time. Technological progress without physical capital accumulation magnifies inequality in or out of steady state, generating a Picketty (2013) like situation. Financial crisis in terms of credit shortage hurts workers but benefits capitalists etc.

JEL-Codes: F100, O400, B400.

Keywords: trade, capital, growth, inequality.

Sugata Marjit
Indian Institute of Foreign Trade
Kolkata / India
marjit@gmail.com

This Draft – November, 2020

Section 1

Introduction

This paper brings in the classical wage fund framework incorporating this as capital K in a standard 2×2 Ricardian model of trade and comparative advantage [Caves and Jones(1973 or any Edition)] Start-up level of K determines wage rate given that labour has to be fully employed. This structure replicates many features of the neo-classical system of production with CRS and diminishing returns technologies such as the wage and return to capital depend on K/L ratio with usual signs. Several interesting and new results are derived in the context of trade and inequality. In the dynamic context this replicates fundamental features of the Solow growth model with a unique and stable steady state and smooth convergence of the growth of K to the natural rate of growth in L . But mechanism behind such a process is quite different. The paper generates many interesting results such as

unambiguous decline in workers real income following free trade, rise in inequality independent of the pattern of trade. Positive but dwindling effect on growth due to trade etc.

The paper is related to Ricardo's original work (1817) and contributions by Findlay (1974, 1984, 1995), Hicks and Hollander (1977), Steedman (1979), Maneschi (1983, 2008) etc. and references therein. Typically the classical model has been modelled in some of these papers by adhering to the basic presumption of the classical system regarding the labour market i.e. unlimited supplies of labour at a given real wage. The use of neo-classical tools such as marginal product of labour has also been common either to characterise the wage unemployment adjustment process (Hicks and Hollander 1977) or to characterize the agricultural sector.

Hicks and Hollander (1977) raised the issue that Ricardo did not always talk about a fixed real wage and was aware of the fact that real wage might increase in the process of growth but would fall to the subsistence level as labour force would also grow.

They went on modelling such a conjecture using diminishing marginal productivity of labour. In a way this paper is related to the same idea with two stark differences. First, we do not talk about unemployment at all, not because it is irrelevant or we ignore the Ricardian hypothesis of unlimited supplies of labour at a given real wage. Our purpose is entirely different from Ricardo or Hicks and Hollander (1977) and other papers in this area . We wish to demonstrate that with the assumption of full employment in a wage fund incorporated model of Ricardian comparative advantage, we get similar results as in a fundamental neo-classical model with conventional assumptions and the model is capable of reflecting on series of contemporary global problems.

Second, while doing this we do not bring in the neo-classical assumption of diminishing returns since we are not interested in the wage goods problem of Ricardo involving agriculture where real wage is fixed in terms of the agricultural good. Ricardo's main project was to show that cheaper wage goods induced by the comparative advantage driven trade pattern stimulated the pace of accumulation.

Such growth trade nexus is not our point of focus, though Ricardo's framework could be coined as the first model of trade and endogenous growth. For a contemporary discussion on the issue one may refer to Marjit and Mandal (2017) and Marjit, Basu and Veeramani (2019). In this set up full employment condition holds and hence it is not unemployment but wage which is determined in the process. The flexibility of wage depends entirely on the supply of credit or the wage fund. With a given wage fund and a specified size of the labour force only a certain level of wage can be paid to the workers. Real wage in this paper is endogenous.

More recently Marjit, Mandal and Nakanishi (2020) , Long and Nakanishi (2020), Kikuchi and Marjit (2011) and Marjit and Mandal (2017) have built on Marjit (2007) which explores Ricardo in the context of trade on virtual platforms. However, for contemporary issues discussed in the paper on trade inequality, growth etc. one can refer to the outstanding graduate text by Feenstra (2003) and for exhaustive recent extensions of the Ricardian aspects of trade Autor

(2018). But none of the materials referred here has used the structure we are developing in this paper.

Section 2

Model and Results

A country produces two goods of amounts X_1 and X_2 with only Labour in total quantity L , a constant. Per unit labour coefficients are given by a_{11} and a_{12} . Goods are sold at a competitive price P_1 and P_2 . We choose good 2 as the numeraire with $P = P_1/P_2$. In fact all variables are measured in the units of the second good.

At the beginning of the production period workers are hired and wages are paid before the outputs are realized. The wage fund or the sum is borrowed at a rate of interest r and after the revenue is realized producers pay back the principal with interest. The wage fund is given at the start of the period by previous accumulation process defined as capital in the model and denoted by K .

To absorb the entire L , given K , W has to adjust such that

$$W = K/L \quad (1)$$

(1) relates W positively to K/L . Note that the relationship qualitatively is the same for a CRS production function with diminishing marginal productivity, most commonly used in neo classical production theory.

Competitive price conditions will yield

$$W a_{l1}(1+r) = P \quad (2)$$

$$W a_{l2}(1+r) = 1 \quad (3)$$

(2) and (3) give us the same relative price as in the standard text book example with both sector paying same W and r in equilibrium under autarky.

We assume homothetic demand function which leads to the following market clearing condition

$$D(P) = X_1/X_2 \quad (4)$$

Full Employment condition

$$a_{l1}X_1 + a_{l2}X_2 = L \quad (5)$$

(1)-(5) determine W , P , r , X_1 and X_2

Point to be noted is that W is determined exclusively from K/L . One could interpret K/W as the demand curve for labour (Figure-1). As W goes up the same K can employ less workers. With the full employment constraint a unique W is determined which absorbs L . As W goes up r must fall given the competitive price conditions (Fig-2).

Typically in the classical system real wage is assumed to be given and unlimited labour supply is available at that real wage, mimicking the state of the economy around the age of industrial revolution. More modern versions of the classical Ricardian system incorporate a mix of such system with diminishing marginal productivity in agriculture. In the present set up W is perfectly flexible but is determined by the available stock of capital and the size of the labour force. Any deviation of W from K/L either leads to a rise or a fall in the wage rate due to competitive pressure. $K/W > L$ implies a rise in the wage as demand exceeds supply and $K/W < L$ leads to a drop in W due to excess supply of workers.

Suppose K and L grow at the same rate. Note that W remains frozen. Also P does not change pegged by technologies. But aggregate income goes up for workers and capitalists i.e. the owners of capital. Relative outputs have to remain the same though higher L will increase both. Hence, both outputs will increase at the same rate. Thus following uniform growth in K and L , outputs grow at the same uniform rate. Though demand plays a role here, the result, de facto, has a CRS flavour. The only twist is that along such a balanced growth path W and r do not change. In this model W/r remains the same as long as K/L does not change. This happens from the supply side. But the mechanism is completely different from the standard production models.

International Trade

Consider a situation where the world relative price P^* is greater than P , the autarkic relative price of X_1 . The usual and predictable outcome is that the country will specialize in production of the first good. That

will maximize the value of production at world prices. This will imply a rise in r and all L will flow into this sector and hence K .

W remains the same as K/L remains the same i.e. the real wage in terms of the import good, the numeraire, does not change. But as P rises real wage is likely to fall assuming workers consume both goods.

$(1+r)$ must rise as P rises and in the same proportion with P . r rises in terms of the import good and real return to capital must go up. So real wage falls and real return to capital increases. Note that this will be the outcome independent of the pattern of comparative advantage. If this country was importing X_2 , the same thing would have happened. Real wage would have fallen and real return to capital would surely rise.

This is like the well-known Stolper Samuelson result but it holds independent of the "factor intensity" ranking. One can easily show that capital intensity of production (WL_i/WL) will rise for the export good in both countries.

We should highlight a point that is critical from a distributional point of view involving K and L. It is undesirable to assume that workers in the system would not own any capital. Let us assume that a fraction of K is owned by the workers and hence they do get the benefit of a rise in r. But still the following proposition would hold.

Proposition 1- International Trade must reduce the real income of the workers and inequality between labour and capital income rises independent of the pattern of trade, assuming that the workers earn less than the capitalists to start with.

Proof

Suppose a fraction α of K is owned by the workers. Then their real labour income will be given by

$$W_R = (WL + \alpha rK)/P.$$

From (2) r along with $(1+r)$ will increase roughly in the same proportion with P (as $r/1+r$ is very close to 1). But WL does not change. Hence W_R

must fall. Since r/P does not change, income distribution goes against labour and in favour of capital unambiguously. QED

Double sided wage inequality by which trade worsens inequality in both trading countries has been an intriguing feature as the standard Heckscher-Ohlin-Samuelson model predicts asymmetric response. Voluminous literature exists and has been discussed in Feenstra and Hanson (1996). Marjit and Acharyya (2003) have analyzed these cases for the developing countries and Marjit and Acharyya (2007) provide a detailed survey of the literature. These works deal with the wage gap between the skilled and the unskilled. What we have shown here is that such a result relating capitalists and workers has a natural outcome in our model which occurs independent of trading patterns. The rising income gap between capital and labour echoes the concern of many and notably that of Picketty (2013).

Point to note is that trade leads to the entire allocation of K to the more profitable sector without any impact on W and raising r in both

countries. Trade in this set up continues to depend only on technological differences and trade is entirely driven by technology.

Proposition 2 - Factor endowments do not affect the pattern of trade, but only factor returns.

Proof- The proof is fairly straight forward. K/L determines W and hence r but not P which is pegged by technology. Higher K/L means higher W and lower r before trade takes place. Once trade takes place and the country gets completely specialized, a rise in K/L will do the same, raising the wage and reducing r . But nothing else should change. QED

Growth and Technological Progress

Ricardo's original work stressed the significance of capital accumulation and how the principle of comparative advantage could positively impact industrial revolution in England. He proposed the repeal of corn-law, which happened in 1846. That made import of corn, the wage good, cheaper boosting rate of profit and rate of accumulation. Trade according to British comparative advantage in

industrial goods was supposed to stimulate trade and growth at the same time. His was the first model of trade led endogenous growth. Similar process can work on virtual platform where trade automatically leads to higher productivity and hence growth in an otherwise Ricardian set up.

Classical economists often made a common assumption that capitalists save and invest all their profits and workers consume all their income. We do not need to make such assumption as workers can own capital and invest. In this simple model we postulate that all profits are invested, whoever earn it. To make it look like the Solow model we assume that L grows at an exogenous rate n .

Let K_t be the capital stock at t , then

$$K_{t+1} = K_t (1+r) \text{ and similarly}$$

$$L_{t+1} = L_t (1+n)$$

Therefore, K/L grows at a rate $(1+r)/(1+n)$.

Proposition 3 – A unique and stable steady state growth path exists with $r = n$

Proof- Start from any K/L and we have a unique closed economy equilibrium values of P and r , given $K/L=W$, and assumptions of the model. First, we show that if there is a steady state it must give us a unique set of values of the variables.

Steady state implies $r=n$. K/L is a constant, so is W and given W all other variables have same values over time. Hence, it is unique.

Given $n>0$, we can solve for $r = n$, if there is a solution for the system at initial K/L , the same solution will persist for $r = n$. Hence, a steady state exists.

Suppose $r>n$, K/L is rising, so is W (P is frozen by technology) and r will fall up to n . Once it reaches n , it will remain there as K/L will reach its steady state value.

Suppose $r<n$. K/L is falling, so is W and r will be rising until it hits n and steady state will be reached.

Thus the steady state equilibrium is stable. This completes the proof.

QED

The same story will be repeated for a completely specialized economy trading at world prices.

Note the similarity with the Solow (1956) model of growth. Per capita income does not grow in steady state and income grows at the natural rate n as in a Solow model. The convergence to the steady state is not guaranteed by diminishing returns as in the neo-classical model, but through a rise in r followed by a drop in W when K/L falls and through a fall in r when W rises and K/L rises. We replicate all results usually derived via the marginal productivity theory of distribution. Countries with lower K/L grow faster because of the decline in the wage rate. Thus typical Solow model driven idea of absolute convergence holds.

Proposition 4 – Trade can only temporarily boost up growth in per capita income but in the long run per capita income will depend only on steady state $K/L [= (K/L)^]$*

Proof – Let us start from $(K/L)^*$ and go for trade at world prices which are different from local prices, which lead to complete specialization

raising r beyond n . K/L and W start rising and r starts falling up to n reducing the growth of capital and eventually converging to r . Thus over some periods per capita income must rise as $r > n$. In fact during the transition process per capita income will be given by

$$Y_t = Y^* + F [(K/L)_t - (K/L)^*], F[0]=0, F' > 0,$$

where $Y^* = (K/L)^* (1+r^*)$ is the steady state per capita income.

As trade leads to a jump in r , Y increases and K/L starts rising and r starts falling, dragging K/L down to the steady state. Thus the growth in per capita income falls to zero eventually.

QED.

This model has another interesting feature. Any kind of technological progress without the growth in K/L does not improve the economic conditions of labour. With K/L held fixed W will not rise but a fall in labour coefficients will raise r . If we start from a steady state, r will rise and K/L will start growing only then W can rise. But at a steady state W will remain the same but r will be higher with technological progress. Technology does not help workers because given amount of

wage fund and the size of the labour force there is only one wage rate than can be paid to the workers and that remains insulated from technological progress. Quantities increase and the higher value of income is all retained by the capitalists. Pre trade uniform technological progress across sectors will have usual outcomes as in Ricardian model. With trade it will be only for the single traded sector.

Proposition 4 – Technological Progress will increase return to K while W does not change.

Proof- See the discussion above.

One could conceive a slightly different set up where there is an R and D sector which uses labour to reduce the labour coefficient. In the completely specialized world a_{l1} gets reduced by employing L_d amount of workers through the following function

$$a_{l1} = A(L_D), A(0) = a_{l1}(0) > 0 \text{ and } A' < 0 \quad (6)$$

Note that K is divided between wage funds deployed in two sectors, X_1 and D with workers paid the same W. $(L - L_D)$ will be allocated for production and the rest for R and D. Interestingly the equilibrium

level of L_D is indeterminate as more is invested in D, higher will be r . In principle close to all K should be invested in D sector to maximize income from capital or wage fund i.e. rWL , with both L and W held constant. In fact as Beladi, Jones and Marjit (2002) show zero production can be a feasible equilibrium in a Ricardian trade model if technology could be sold out to the rest of the world against a proper fee. However, main point is that wage does not increase with technological progress but r does.

Proposition 5- Both trade and technological progress contribute unambiguously to rising inequality.

Proof- See the discussion above.

QED

Now consider a case where K, L and L_D all are growing at the same rate n . We have already shown that in such a state as K/L does not change W remain the same but growth in R and D will continuously reduce the labour coefficient and hence r will increase. Hence, the growth rate of r will be greater than that of W which does not change. Thus

the outcome of the steady state can be a continuous rise in inequality with income from K growing faster than that of labour. This is a similar situation as emphasized by Picketty (2013) in his celebrated book, but ours originates in a classical and rather unconventional structure.

Section 3 Concluding Remarks

We have proposed a text book Ricardian model stapled with the wage fund hypothesis which captures the classical notion of capital (K) or working capital or credit. Bringing in K in this model leads to neo-classical type relationship between factor endowments and factor prices, though income distribution between labour and capital is fuelled by entirely different mechanisms. There are certain robust outcomes which are quite interesting from contemporary perspectives such as unambiguous rise in inequality due to trade and technological progress all across the globe. Trade benefits growth but not over the long run. Key to rising wage and decline in inequality is physical accumulation of capital, but not technological change. Trade

increases credit intensities of the export good and may encourage more or less credit intensive sectors. Only technologies determine trade pattern not factor endowments i.e. labour and credit supply. Interesting extension can be done in terms of the impact financial crisis and trade as the supply of credit is affected and possible overall impact on demand.

The limitation of this approach is that it is based entirely on a notion of working capital as given by the classical wage fund system and completely abstracts from the role of capital inside the production process , not only as the source of finance. Hence, we cannot talk about fixed investments. But role of capital in innovations has been accommodated, leading to a impact that lingers over time. The decision to allocate K for R and D now has to be based on a dynamic choice which we do not model here explicitly. Thus finance in the current period does have significant future implications from the supply side.

References

- Autor, D. 2018. "Trade and Labour Markets: Ricardian Models + Empirical Evidence." *MIT 14.662 Spring: Lecture 9 & 10*.
- Beladi H, Jones R.W & Marjit S. (2002). "Technology for Sale." *Pacific Economic Review, Vol 2 Issue 03, Pages 187-196*.
- Caves, R and R.W. Jones- (1973) *World Trade and Payments – An Introduction (Any Edition) Little Brown Publishing. USA*
- Feenstra R. C. (2003) "Advanced International Trade Theory & Evidence." *Princeton University Press, ISBN: 9781400873760, 1400873762*.
- Feenstra, R and G. Hanson (1996) –"Globalization, Outsourcing and Inequality"- *American Economic Review, 86 (2) Pages 240-245*.
- Findlay R. 1(974). "Relative Prices, Growth & Trade in a Simple Ricardian System." *Economica, Vol 41, No. 161, Pages 1-13*.
- Findlay R. (1984). "Growth & Development in Trade Models." *Handbook of International Economics, Vol 01, Ch. 04, Pages 185-236*.
- Findlay R. 1(995.) "Factor Proportions, Trade, and Growth." *Ohlin Lectures, MIT Press, ISBN: 9780262061759*.
- Hicks J & Hollander S. (197). "Mr. Ricardo & the Moderns." *Quarterly Journal of Economics, Vol 91, No 03, Pages 351-369*.
- Jones, R.W. – (2018) "International Trade Theory and Competitive Models" – *World Scientific Pub*.
- Maneschi A. (1983). "Dynamic Aspects of Ricardo's International Trade Theory." *Oxford Economic Papers, Volume 35, Issue 01, Pages 67-80*.
- Maneschi A. (200). "How Would David Ricardo Have Taught the Principle of Comparative Advantage?" *Southern Economic Journal, Vol 74, No. 04, Pages 1167-1176*

- Marjit S & Acharyya R. (2003) “International Trade, Wage Inequality And the Developing Economy: A General Equilibrium Approach” *Springer, ISBN: 978-3-642-57422-1*.
- Marjit,S and R. Acharyya (2007) – “Trade and Wages – The Princeton Encyclopedia of The World Economy” – K. Reinhart, R. Rajan, A, Glass and L. Davis (eds) – *Princeton University Press*
- Marjit S. (2007). “Trade Theory and the Role of Time Zones.” *International Review of Economics and Finance, Vol 16, Issue 02, Pages 153-160*.
- Marjit S & Mondal B. (2017). “Virtual Trade between Separated Time Zones and growth.” *International Journal of Economic Theory, Vol 13, Issue 02, Pages 171-183*.
- Marjit S, Basu A & Veeramani C. (201). “Growth Gains from Trade.” *CESifo Working Paper No 7905*.
- Marjit S, Mondal B &Nakanishi N. (202), “Virtual Trade & Comparative Advantage- The Fourth Dimension” *Springer, ISBN: 978-981-15-3906-0*.
- Nakanishi N & Long N. V. (2020). “A New Impetus for Endogenous Growth: R & D Offshoring via Virtual Labour Mobility.” *Review of International Economics, Vol 28, Issue 03, Pages 846-883*.
- Picketty, T(2013)” *Capital in Twenty First Century (Cambridge, MA, Belknap Press)*
- Ricardo, D (1817) –“On Principles of Political Economy and Taxation “ (1st Edition)- London, John Murray.
- Solow, R (1956) –“A Contribution to the Theory of Economic Growth” –*Quarterly Journal of Economics -70(1), Pages 65-94*
- Steedman, I (1979) – *Fundamental Issues in Trade Theory- Palgrave, McMillan*

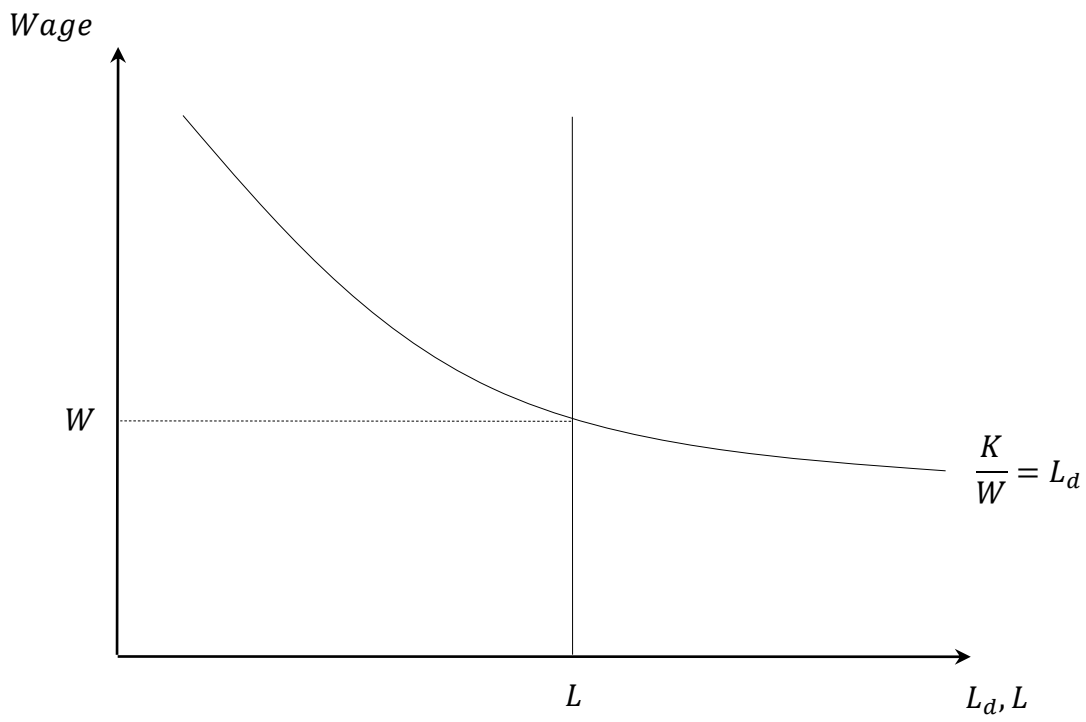


Figure 1

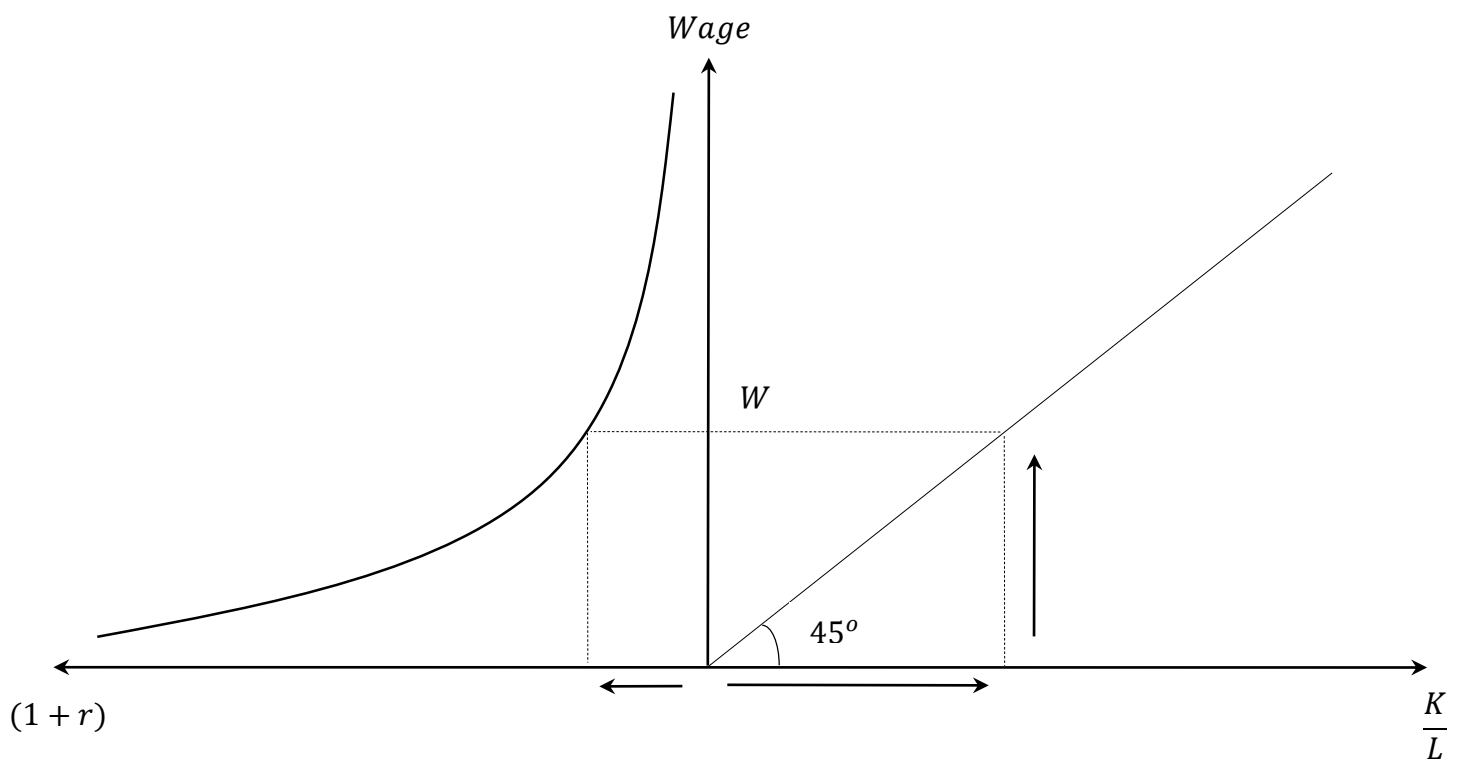


Figure 2