

# Robot Imports and Firm-Level Outcomes

*Alessandra Bonfiglioli, Rosario Crinò, Harald Fadinger, Gino Gancia*

## **Impressum:**

CESifo Working Papers

ISSN 2364-1428 (electronic version)

Publisher and distributor: Munich Society for the Promotion of Economic Research - CESifo GmbH

The international platform of Ludwigs-Maximilians University's Center for Economic Studies and the ifo Institute

Poschingerstr. 5, 81679 Munich, Germany

Telephone +49 (0)89 2180-2740, Telefax +49 (0)89 2180-17845, email [office@cesifo.de](mailto:office@cesifo.de)

Editor: Clemens Fuest

<https://www.cesifo.org/en/wp>

An electronic version of the paper may be downloaded

- from the SSRN website: [www.SSRN.com](http://www.SSRN.com)
- from the RePEc website: [www.RePEc.org](http://www.RePEc.org)
- from the CESifo website: <https://www.cesifo.org/en/wp>

# Robot Imports and Firm-Level Outcomes

## Abstract

We use French data over the 1994-2013 period to study how imports of industrial robots affect firm-level outcomes. Compared to other firms operating in the same 5-digit sector, robot importers are larger, more productive, and employ a higher share of managers and engineers. Over time, robot import occurs after periods of expansion in firm size, and is followed by improvements in efficiency and a fall in demand for labor. Guided by a simple model, we develop various empirical strategies to identify the causal effects of robot adoption. Our results suggest that, while demand shocks generate a positive correlation between robot imports and employment, exogenous changes in automation lead to job losses. We also find that robot imports increase productivity and the employment share of high-skill professions, but have a weak effect on total sales. The latter result suggests that productivity gains from automation may not be entirely passed on to consumers in the form of lower prices.

JEL-Codes: J230, J240, O330, D220.

Keywords: automation, displacement, firms, robots.

*Alessandra Bonfiglioli*  
*Queen Mary University of London*  
*United Kingdom – London E1 4NS*  
*a.bonfiglioli@qmul.ac.uk*

*Rosario Crinò*  
*Università Cattolica del Sacro Cuore*  
*Italy – 20123 Milan*  
*rosario.cрино@unicatt.it*

*Harald Fadinger*  
*University of Mannheim / Germany*  
*harald.fadinger@uni-mannheim.de*

*Gino Gancia*  
*Queen Mary University London / UK*  
*g.gancia@qmul.ac.uk*

This draft: November 2020

We thank Paula Bustos, David Hémos, Joseba Martinez, Pascual Restrepo and seminar participants at the Barcelona GSE Summer Forum (2019), the ECB conference “Challenges in the digital era”, ERWIT (2020), the OECD, University of Mannheim, the CRC TR224 Conference for useful comments. Harald Fadinger gratefully acknowledges financial support from the DFG via CRC TR 224 (Project B06).

## 1 INTRODUCTION

Humans have always been afraid of competing against machines. Back in the 19th century, the Luddites protested violently against automated textile equipment fearing it would destroy their jobs. In the 1930s, John Maynard Keynes warned of the risk of “technological unemployment”. Today, amid growing concerns, economists and politicians alike are discussing the opportunity of introducing a robot tax. While changes in the production process did not lead to mass unemployment, at least yet, stagnation in wages and productivity growth, and soaring inequality, are fuelling the view that new technologies failed to deliver the promised prosperity.

In this debate, the rise of industrial robots has gained special attention. Robots are programmable machines that have the capability to move on at least three axes. As such, robots, unlike other pieces of equipment, are designed to replicate human actions. The first prototype, the Unimate, was introduced in 1961 at General Motors to perform basic welding and carrying tasks. Other machines of this type were developed to assist human workers with a wide array of tasks, including heavy lifting, as well as hazardous or repetitive work. Yet, thanks to several recent technological advancements, today’s robots have a much higher degree of autonomy. As a result, the adoption of these technologies has grown at a staggering rate.<sup>1</sup>

Industrial robots are technologies adopted by firms. To understand their effect on the economy, one must know how they affect the firms adopting them in the first place. Do robots substitute or complement humans in firms that automate? Are the effects heterogeneous across firms and workers? Do robots increase the productivity of firms using them? And if so, are these productivity gains passed on to consumers or rather used to consolidate market power? From a theoretical perspective, the answer to all these questions is ambiguous. From an empirical perspective, unfortunately, the available evidence is worryingly limited due to the lack of firm-level data on the use of robotics (Raj and Seamans, 2018).

This paper is one of the first attempts to fill this gap. Our main innovations are to measure automation using detailed imports of industrial robots by French firms over the 1994-2013 period and to use a novel identification strategy to identify causality. Recently, researchers have turned to import data as a source of information on the usage of robots.

---

<sup>1</sup>By 2018, there were an estimated 2.44 million industrial robots performing a variety of tasks that humans used to do. This number is expected to reach 4 million by 2022 and the future scale of the phenomenon is difficult to predict. Frey and Osborne (2017) argue that almost half of U.S. employment is at risk of being automated over the next two decades. See also Brynjolfsson and McAfee (2014) and Baldwin (2019).

Although they do not include domestic purchases, robot imports are widely recognized as a good proxy for automation because of the high concentration of this very specialized sector. For instance, in 2017, the top six leading companies, ABB (Switzerland), Omron (US), Fanuc (Japan), Kawasaki Robotics (Japan), KUKA (Germany) and Yaskawa (Japan) accounted for 44 percent of global revenue. Global exports are also dominated by few suppliers, with Japan and Germany alone accounting for 50 percent of the total volume, while France's share is about 5 percent only. Compared to other proxies used in the literature, such as dummies collected from survey data, the key advantage of robot imports is that they provide a precise measure of automation intensity that is available for the near universe of firms. With this rich data, we develop various empirical strategies to identify the causal effects of robot adoption on sales, productivity and employment within French firms.

To guide the analysis, we build a simple model in which heterogeneous firms invest in automation, whose effect is to replace workers with capital in a set of tasks. Automation saves on production workers, but it also requires non-production workers such as engineers and managers. As the cost of capital declines, firms choose to invest more in automation, with ambiguous effects on employment. On the one hand, machines displace workers; on the other hand, the increase in productivity raises the demand for all factors. These effects vary across firms: since automation saves on the variable cost, firms facing a higher demand invest more aggressively in automation and are more likely to shed workers.

The model yields a number of testable predictions. First, it shows that positive demand shocks are likely to increase employment and automation simultaneously, thereby generating a spurious positive correlation between these variables in the data. Negative shocks to the cost of machines, instead, trigger automation and are more likely to reduce employment, especially in firms that are more prone to automate. The model also shows that a simple measure of automation *intensity*, namely expenditure on automation over the cost of capital, is independent of demand shocks and hence is more likely to capture the negative effect on employment. Besides the impact on the demand for labor, automation increases productivity and the relative demand for non-production workers.

We then take these predictions to the data. We start by documenting some descriptive patterns, focusing on the manufacturing sector, where the use of industrial robots is more prevalent. First, we show that robot adopters differ significantly from non-adopters. In particular, they are larger, more productive, and have a larger employment share of high-skill professions. But do robot adopters differ from other firms before importing robots, or do they start diverging afterwards? To shed light on this question, we use a difference-in-differences

event study approach to analyze how firm-level outcomes evolve over time for firms that start to adopt robots relative to firms that do not. The results show that robot adoption occurs after periods of expansion in firm size, and is followed by improvements in productivity and labor demand shifts towards high-skill professions. However, the upward trend in employment reverses and sales stop diverging after adoption, suggesting that workers start to be displaced and that the productivity gains do not translate entirely into a fall in prices.

To identify the causal effects of robots, we next use two complementary strategies. First, we exploit yearly variation within firms, and regress various outcomes on a measure of robot intensity, which is defined as the ratio between the stock of robot imports and the total capital stock of the firm. According to our model, this measure purges away demand shocks. Second, we focus on long-run changes in outcomes within firms, and exploit variation in the decision to adopt robots driven by pre-existing differences in technological characteristics, which should determine the predisposition to automate.

In particular, we construct a novel instrument by interacting a proxy for how suitable production is for automation in a given industry with a proxy for the ease with which robots can replace worker activities within each firm. Consistent with our model, this instrument captures the idea that a reduction in the cost of machines, which should be relatively larger in industries whose production is more suitable for automation, should affect robot adoption relatively more in firms whose production is more intensive in tasks that can be performed by robots. Our proxy for an industry’s suitability for automation is the initial average robot intensity of all other firms in the same 5-digit industry. Our firm-level proxy for replaceability is instead the pre-sample share of employment that can be replaced by robots in each firm, and is constructed by combining the classification of tasks performed by robots in Graetz and Michaels (2018) with detailed firm-level occupational data. Accordingly, our identification strategy exploits differential exposure to robot adoption across firms that operate in industries with varying suitability for automation and exhibit a heterogeneous prevalence of automatable tasks in production.

The results for employment are particularly interesting. We find that while robot adoption and employment growth are correlated, an increase in robot intensity is followed by job losses. Similarly, firms with initially more replaceable tasks operating in industries more suitable for automation experience a stronger reduction in employment than other firms. Regarding other outcomes, we consistently find that importing robots leads to an increase in the employment share of high-skill professions and various measures of productivity, while the effects on total sales are much weaker.

The first-stage results also confirm the predictions of the model, thereby lending more credibility to our identification strategy: we find that firms performing more replaceable tasks in industries with a higher robot suitability, as well as larger firms, are more likely to start adopting robots in subsequent years. Finally, we show that the IV results are robust to controlling for other phenomena, such as trade and offshoring, that could have affected firms differentially depending on the replaceability of employment.

These patterns suggest that demand shocks lead firms to both expand and automate, resulting in a positive spurious correlation between robot adoption and employment. Once demand shocks are neutralized, however, the relationship turns negative, confirming the hypothesis that exogenous changes in automation lead to job displacement. Hence, our results warn that caution should be exercised in interpreting the positive correlation between robot adoption and employment often found in the literature.

The weaker results on sales also suggests that, while robot adoption increases productivity, the higher efficiency does not necessarily lead to a fall in prices. This implies that part of the gains for consumers must be muted by an increase in markups. To our knowledge, this is the first evidence lending support to the hypothesis that investment in robots may give firms market power. It also raises the concern that firms may have had an incentive to choose an “excessive” level of automation (see, for instance, Acemoglu and Restrepo, 2018a, Martinez, 2019, Korinek and Ng, 2018, Caselli and Manning, 2019).<sup>2</sup>

To our knowledge, this is the first paper that uses an IV strategy to identify the effect of industrial robots at the firm level. In doing so, it contributes to the growing literature on the labor market impact of automation. Several influential papers use data from the International Federation of Robotics (IFR), which provides information on purchases of industrial robots for a set of countries and industries. The results are mixed. Acemoglu and Restrepo (2019) find that US commuting zones that were more exposed to robots during the 1990–2005 period experienced negative effects on employment and wages. However, in a panel of 17 countries, Graetz and Michaels (2018) find that, while robots reduced the employment share of low-skill workers, they only had a small effect on total employment and positive effects on productivity. Dauth, Findeisen, Suedekum and Woessner (2018) find that robot exposure across local labor markets in Germany led to job losses in manufacturing that were however offset by gains in the service sector.<sup>3</sup>

---

<sup>2</sup>In an extension of the model, we allow for the possibility that automation, by fostering technological lead, increases market power. In this case, the cost savings are partly offset by an increase in markups and, besides efficiency considerations, firms have an incentive to invest in automation just to increase their profits.

<sup>3</sup>Other papers showing that alternative measures of automation leads to employment losses in some sectors

To overcome the limitations of the IFR data, some recent papers have started to focus on imports of industrial robots. Acemoglu and Restrepo (2018b) and Blanas, Gancia and Lee (2019) use robot imports at the country level. The former paper shows that robot imports behave similarly to other proxies for investment in automation and uses them to study the demand for robots; the latter finds that sectors more prone to automation in countries importing more from leading suppliers of robots experienced a fall in demand for low-skill, young and female workers. Firm-level robot imports have been used by Humlum (2019) for Denmark, Dixen, Hong and Wu (2019) for Canada, and Acemoglu, Leclerc and Restrepo (2020) for France. Importantly, none of these papers uses a firm-level instrument to isolate the causal effect of robot adoption and, as a result, they tend to find positive correlations with employment.

Finally, there is a growing number of papers using alternative proxies for automation at the firm level. Some use dummies from survey data. These include Koch, Manuylov and Smolka (2019) for Spain, Cheng et al. (2019) for China, Dinlersoz and Wolf (2018) for the US, and a study by the European Commission (2016) for 7 European countries. They find that robots are generally more likely to be used in larger and more productive firms, and are associated with positive or non-negative changes in employment. Once more, these papers document mostly conditional correlations. Positive employment effects are found by Aghion et al. (2020), who proxy automation with investment in industrial equipment and electricity consumption of French firms, and use a shift-share IV design to identify causality. The key difference is that they consider a much broader measure of capital inputs, which is likely to be complementary to labor. More in line with our findings, instead, Bessen et al. (2019) use matched employer-employee data from the Netherlands to show that spikes in expenditure on "third-party automation services" increase job separations.

The remainder of the paper is organized as follows. In Section 2 we build a partial equilibrium model in which heterogeneous firms invest in automation, and we use it to derive empirical implications. In Section 3 we discuss the French firm-level data and the main aggregate facts regarding robot imports. In Section 4 we provide descriptive evidence on how robot adopters differ from other firms and we study what happens after a firm in the sample starts importing robots. In Section 5 we use various identification strategies to estimate the effect of robot imports on sales, employment, labor productivity, and the employment share of high-skill workers. Section 6 concludes.

---

that are offset by employment gains in others include Mann and Puttman (2017) and Autor and Salomons (2017).



## 2 THE MODEL

To guide the empirical analysis, we build a model of monopolistic competition in which heterogeneous firms combine production workers, non-production workers and capital, to produce differentiated goods. Firms can also invest in automation, which allows capital to perform tasks that used to be performed by labor. The model illustrates the causes and consequences of automation, and the main challenges when testing its empirical predictions. It also suggests some possible identification strategies. The analysis is in partial equilibrium and is deliberately kept as simple as possible.<sup>4</sup>

### 2.1 THE BASIC SET-UP

Consider a sector producing differentiated varieties  $\omega$  with preferences over these varieties exhibiting constant elasticity of substitution:

$$C = \left[ \int_{\omega \in \Omega} c(\omega)^{\frac{\sigma-1}{\sigma}} d\omega \right]^{\frac{\sigma}{\sigma-1}}, \quad \sigma > 1.$$

Firm  $i$  producing a single variety faces a demand function with a constant price elasticity  $\sigma$ :

$$y_i = A_i p_i^{-\sigma}, \tag{1}$$

where  $p_i$  is the price charged and  $A_i$  is a parameter capturing demand conditions.

To produce  $y_i$ , a firm with productivity  $\varphi_i$  must employ capital and production workers in a unit measure of tasks  $z$ :

$$y_i = \varphi_i \exp \left( \int_0^1 \ln x_i(z) dz \right). \tag{2}$$

Tasks  $z \in [0, \kappa_i]$  are automated, and hence can be performed by capital. The remaining tasks,  $z \in (\kappa_i, 1]$ , can only be performed by production workers. Hence,  $\kappa_i$  represents the extent of automation. Let  $(k_i, l_i)$  denote the quantity of capital and labor, respectively, used for the production of  $y_i$ . Denote with  $r_i$  the rental rate of capital and with  $w$  the wage of production workers. Since in reality different production processes use very different types of machines,

---

<sup>4</sup>The model adds firm heterogeneity to earlier contribution combining the task-based approach and endogenous automation. See, for instance, Zeira (1998), Acemoglu and Autor (2011), Acemoglu and Restrepo (2018a), Hemous and Olsen (2018), Aghion, Jones and Jones (2019), but also Acemoglu, Gancia and Zilibotti (2015).

we allow the cost of capital equipment,  $r_i$ , be firm specific. We also assume  $r_i < w$ , which will guarantee that automation raises productivity. Since machines are cheaper than workers, there is complete specialization, in the sense that tasks  $z \in [0, \kappa_i]$  are performed by machines. Hence, given symmetry we obtain:

$$x_i(z) = \begin{cases} k_i/\kappa_i & \text{for } z \in [0, \kappa_i] \\ l_i/(1 - \kappa_i) & \text{for } z \in (\kappa_i, 1] \end{cases} .$$

Substituting these into (2) yields:

$$y_i = \varphi_i \left( \frac{k_i}{\kappa_i} \right)^{\kappa_i} \left( \frac{l_i}{1 - \kappa_i} \right)^{1 - \kappa_i} . \quad (3)$$

To produce, the firm must also hire  $f$  non-production workers (managers and engineers) with wage  $h$ . For now, we take  $f$  as given, later we will assume it a function of automation,  $\kappa_i$ .

## 2.2 EXOGENOUS AUTOMATION

We now solve the problem of the firm for a given level of  $\kappa_i$ . Firms are monopolistically competitive and choose labor and capital so to maximize profit,

$$\max_{\kappa_i, l_i} \{ p_i y_i - r_i k_i - w l_i - h f \} ,$$

subject to the demand schedule (1), given the production function (3) and taking automation,  $\kappa_i$ , as given. The first-order condition for labor is:

$$w l_i = \left( 1 - \frac{1}{\sigma} \right) (1 - \kappa_i) p_i y_i . \quad (4)$$

Equation (4) shows automation,  $\kappa_i$ , to have two opposite effects on the demand for labor. First, there is a negative displacement effect, captured by  $(1 - \kappa_i)$  and given by the fact that more tasks can be performed by machines (capital). Second, as we will see shortly, there is a positive productivity effect, since an increase in  $\kappa_i$  raises production, which in turn increases the demand for labor.

The first-order condition for capital is:

$$r_i k_i = \left( 1 - \frac{1}{\sigma} \right) \kappa_i p_i y_i . \quad (5)$$

Intuitively, the demand for capital is increasing in the set of tasks it can perform. Taking the ratio of (4) and (5), we obtain:

$$k_i = \frac{\kappa_i}{1 - \kappa_i} \left( \frac{w}{r_i} \right) l_i,$$

which shows that the capital to labor ratio is also increasing in automation,  $\kappa_i$ .

Substituting  $k_i$  back into the production function yields:

$$y_i = \varphi_i \frac{l_i}{1 - \kappa_i} \left( \frac{w}{r_i} \right)^{\kappa_i}, \quad (6)$$

which shows that output per production worker is increasing in  $\kappa_i$  if  $w > r_i$ , as assumed. Intuitively, if labor is more expensive than capital, replacing workers with machines through automation reduces the marginal cost and increases productivity. Finally, using equation (6) into the demand for labor (4) yields:

$$l_i = w^{-\sigma} \left( 1 - \frac{1}{\sigma} \right)^{\sigma} A_i \varphi_i^{\sigma-1} \left( \frac{w}{r_i} \right)^{\kappa_i(\sigma-1)} (1 - \kappa_i). \quad (7)$$

This equation shows how employment depends on  $\kappa_i$  and other exogenous parameters. It can be used to study how the productivity effect and the displacement effect depend on the level of  $\kappa_i$ . In the limit case of full automation ( $\kappa_i \rightarrow 1$ ), it is immediate to see that  $l_i \rightarrow 0$ . This is intuitive, since in this case workers become useless for the firm, because capital can perform all tasks at a lower cost. Hence, the displacement effect must eventually dominate for high levels of automation. However, at low levels of automation, the productivity effect may dominate the displacement effect. To see this, take the derivative of (7) with respect to  $\kappa_i$ :

$$\frac{d \ln l_i}{d \kappa_i} = (\sigma - 1) \ln \left( \frac{w}{r_i} \right) - \frac{1}{1 - \kappa_i}. \quad (8)$$

This derivative is positive for values of  $\kappa_i$  lower than  $1 - [(\sigma - 1) \ln(w/r_i)]^{-1}$ . This condition is more likely to be satisfied when  $\sigma$  and  $w/r_i$  are high, i.e., when the productivity effect is strong enough. In particular, if  $\sigma$  is high, production can be scaled up without a large countervailing fall in prices; and if  $w/r_i$  is high, the cost saving of automation is stronger. If instead  $(\sigma - 1) \ln(w/r_i) < 1$ , then the displacement effect always dominates.<sup>5</sup>

Finally, using (7) into (6) we can express output as a function of automation and other

---

<sup>5</sup>Acemoglu and Restrepo (2018a) emphasize another possible effect, namely, that new tasks are created when others are automated. We abstract from this additional mechanism which would reinforce the positive productivity effect on employment.

exogenous parameters:

$$y_i = A_i \varphi_i^\sigma w^{-\sigma} \left(1 - \frac{1}{\sigma}\right)^\sigma \left(\frac{w}{r_i}\right)^{\kappa_i \sigma}. \quad (9)$$

This equation confirms that automation raises output as long as capital is cheaper than production workers:

$$\frac{d \ln y_i}{d \kappa_i} = \sigma \ln \left(\frac{w}{r_i}\right), \quad (10)$$

and it illustrates that the productivity effect is stronger in industries where demand is more elastic ( $\sigma$ ). Moreover, substituting (4) and (5) into the profit function yields

$$\pi_i = \frac{p_i y_i}{\sigma} - hf,$$

which shows the familiar result that profit is a constant share  $1/\sigma$  of revenue.

We summarize the impact of exogenous automation on firm-level employment and production in the following proposition (proof in the text).

**Proposition 1** *Suppose  $w > r_i$ . Other things equal, an increase in automation, parameterized by a rise in  $\kappa_i$ :*

- (i) *increases production of firm  $i$ ,  $y_i$ , with a stronger effect the higher is  $\sigma$ ;*
- (ii) *decreases employment of firm  $i$ ,  $l_i$ , if  $\kappa_i > 1 - [(\sigma - 1) \ln(w/r_i)]^{-1}$ , and increases it otherwise.*

### 2.3 ENDOGENOUS AUTOMATION

We now allow firms to choose the level of automation,  $\kappa_i$ . Substituting workers with machines requires a costly change in technology and automating more and more tasks poses an increasingly difficult challenge. Hence, we assume that automation entails a cost in terms of non-production workers (i.e., managers and engineers), which is increasing and convex in  $\kappa_i$ . For convenience, we assume the cost  $hf$  to take the following form:

$$hf(\kappa_i, \rho_i) = \frac{h\kappa_i^\delta}{\rho_i \delta}, \quad \delta > 1,$$

where  $\delta$  denotes the convexity of the automation cost. The parameter  $\rho_i$  captures heterogeneity across firms in the (inverse) cost of automation. In particular, it can be interpreted as an index of replaceability of task in the production process of firm  $i$ .

In this set-up, firms choose the level of  $\kappa_i$  that maximizes profit given the choice of factors

derived in the previous section:

$$\max_{\kappa_i} \left\{ \frac{p_i y_i}{\sigma} - \frac{h \kappa_i^\delta}{\rho_i \delta} \right\}.$$

Automation poses a trade-off between its fixed cost and the reduction in the variable cost it generates. The first-order condition for  $\kappa_i$  is:

$$\left(1 - \frac{1}{\sigma}\right) p_i y_i \ln\left(\frac{w}{r_i}\right) = \frac{h \kappa_i^{\delta-1}}{\rho_i}. \quad (11)$$

The left-hand side of (11) is the marginal benefit of automation. It shows that the benefit of automation is increasing in the demand elasticity ( $\sigma$ ), revenues ( $p_i y_i$ ) and in the cost saving entailed by machines ( $w/r_i$ ). The right-hand side is instead the marginal cost.

Substituting  $y_i$  from (9), the first-order condition for automation (11) becomes:

$$\left(1 - \frac{1}{\sigma}\right)^\sigma A_i \left(\frac{\varphi_i}{w}\right)^{(\sigma-1)} \left(\frac{w}{r_i}\right)^{\kappa_i(\sigma-1)} \ln\left(\frac{w}{r_i}\right) = \frac{h \kappa_i^{\delta-1}}{\rho_i}. \quad (12)$$

This expression shows the exogenous determinants of the marginal benefit of automation and can be used to solve implicitly for the equilibrium level of  $\kappa_i$ . We can show that the second-order condition is necessarily satisfied if  $(\delta - 1) > (\sigma - 1) \ln(w/r_i)$  and the unique solution is interior if:

$$0 < A_i \left(1 - \frac{1}{\sigma}\right)^\sigma \left(\frac{\varphi_i}{r_i}\right)^{\sigma-1} \ln\left(\frac{w}{r_i}\right) < \frac{h}{\rho_i}. \quad (13)$$

Clearly, if  $w/r_i < 1$  there is no benefit of automation, hence the optimal  $\kappa_i$  is zero. If instead the cost of automation is too low, the firm will choose full automation, i.e.,  $\kappa_i = 1$ . For  $w > r_i$  and a sufficiently high cost of automation, as in (13), instead, there is an interior optimal level of  $\kappa_i$ .

We summarize in the next proposition the determinants of automation (proof in the appendix).

**Proposition 2** *Suppose that condition (13) is satisfied. Then, there exists a unique equilibrium choice of automation  $\kappa_i^* \in (0, 1)$  implicitly defined by equation (12). The comparative statics of  $\kappa_i^*$  to changes in the exogenous parameters are:*

$$\frac{d\kappa_i^*}{dA_i} > 0; \quad \frac{d\kappa_i^*}{d\varphi_i} > 0; \quad \frac{d\kappa_i^*}{d(w/r_i)} > 0; \quad \frac{d\kappa_i^*}{d(\rho_i/h)} > 0. \quad (14)$$

These results are intuitive and consistent with the existing literature.<sup>6</sup> Larger firms (high  $A_i$  and  $\varphi_i$ ) have a stronger incentive to pay the fixed automation cost to save on the variable production cost; automation is also increasing in the cost-saving it entails ( $w/r_i$ ) and decreasing in its own cost  $h/\rho_i$ .

## 2.4 EMPIRICAL IMPLICATIONS

**Effect of Automation on Firm-Level Outcomes.** The model has sharp predictions for the effect of automation on some firm-level outcomes. In particular, automation should clearly have a positive effect on measures of productivity and increase the demand for non-production workers. The implications of the model regarding the relationship between automation and employment are instead more nuanced. In particular, (8) shows that the effect of  $\kappa_i$  on  $l_i$  is potentially ambiguous, and possibly heterogeneous across firms and sectors. Hence, whether or not automation raises employment may ultimately be an empirical question.

**Challenges to Identification.** The model also illustrates the key challenge that the econometrician faces in identifying the causal effect of automation. The main difficulty hinges on the endogeneity of  $\kappa_i$ . As shown in Proposition 2, automation depends on parameters that capture the exogenous costs and benefits of machines, namely, replaceability ( $\rho_i$ ), the cost of capital ( $r_i$ ) and the cost of non-production workers ( $h$ ), but it also depends on shocks that have a direct effect on firm-level outcomes. In particular, both demand shocks, captured by  $A_i$ , and productivity shocks, captured by  $\varphi_i$ , trigger automation, but they also have a direct positive effect on production and employment. Hence, these shocks may bias upward estimates of the effect of automation on sales and productivity; even worse, they may generate a positive correlation between automation and employment, even if, conditional on them, and increase in  $\kappa_i$  would lead to job losses. Firm and sector-year fixed effects are not sufficient to solve the problem because these shocks are likely to vary both across firms and over time. In particular, a recent literature has highlighted the quantitative importance of firm-specific demand shocks for explaining sales.<sup>7</sup>

**Identifying Causal Effects: Automation Intensity.** Fortunately, the model also offers possible remedies to this bias. Exogenous shocks to the costs and benefits of automation, as

---

<sup>6</sup>See for instance Dechezlepretre et al. (2019), Cheng et al. (2019), Hemous and Olsen (2018), Koch, Manuylov and Smolka (2019).

<sup>7</sup>See, for instance, Hottman, Redding and Weinstein (2016) and Bonfiglioli, Crinò and Gancia (2019).

captured by the parameters  $\rho_i$  and  $r_i$ , can be used to isolate variation in  $\kappa_i$  that is orthogonal to demand shocks. To identify firm-specific shocks to  $r_i$ , the model suggests to use *automation intensity* defined as the cost of automation,  $h\kappa_i^\delta/(\rho_i\delta)$ , over capital expenditure,  $r_ik_i$ . Using the first-order condition for  $k_i$  (5), into the first-order condition for automation (11), we can write:

$$\frac{h\kappa_i^\delta}{\rho_i\delta r_ik_i} = \frac{1}{\delta} \ln\left(\frac{w}{r_i}\right). \quad (15)$$

This equation shows immediately that automation intensity can be used to identify variation in the benefit from automation that is independent of demand shocks. Controlling for firm and sector-year fixed effects should also purge this measure from any variation that is not driven by firm-specific changes in the cost of capital,  $r_i$ . With this new proxy for  $r_i$  at hand, one can test the prediction of the model for the effect of changes in  $r_i$  on  $l_i$ :

$$\frac{d \ln l_i}{d \ln r_i^{-1}} = \kappa_i(\sigma - 1) + \left[ (\sigma - 1) \ln r_i^{-1} - \frac{1}{1 - \kappa_i} \right] \frac{d\kappa_i}{d \ln r_i^{-1}}. \quad (16)$$

This equation illustrates once more the tension between the productivity effect and the displacement effect. Compared to (8), equation (16) factors in the positive effect of a fall in  $r_i$  on capital, and hence captures a broader effect of automation.<sup>8</sup>

**Identifying Causal Effects: Tasks Replaceability.** Another concern is that  $r_i$  may still be correlated with other characteristics, such as the cost of non-automation capital, which may have a direct effect on firm-level outcomes. To mitigate this concern, we can combine measures of exposure to automation with exogenous differences in the replaceability of tasks across firms,  $\rho_i$ . The literature has shown how to build such proxies. The model suggests that variation in the cost of capital  $r_i$  has a stronger effect on automation in firms with a higher  $\rho_i$ , as can be seen rearranging (11):

$$\kappa_i = \left[ \left(1 - \frac{1}{\sigma}\right) p_i y_i \frac{\rho_i}{h} \ln\left(\frac{w}{r_i}\right) \right]^{\frac{1}{\delta-1}}.$$

Intuitively, changes in the cost of capital have a bigger impact on firms that are already more prone to automation. Based on this insight, in the next sections, we build an instrument for robot adoption by combining information on which industries are more suitable for automation and firm-level measures of replaceability of employment. The interaction between these

---

<sup>8</sup>If the sign of (16) is negative, the sign of (8) must be negative *a fortiori*.

variables allows us to isolate the effect of the automation intensity of a sector on firms whose workers are more substitutable with machines.

Finally, all these predictions have been derived in a model where the choice of automation is continuous. In the data, however, the decision to automate is often measured by binary variables. Nevertheless, as we show in the Appendix, a variant of the model where automation is a discrete choice yields qualitatively similar predictions: a decline in the cost of capital increases the probability that firms adopt a higher automation intensity and the increase in this probability is higher if tasks are easier to replace with machines.

### 3 DATA AND AGGREGATE FACTS

Our empirical analysis uses firm-level data for France over the 1994-2013 period and combines several firm-level data sets administered by the French statistical agency (INSEE). We observe the universe of French firms (defined as legal entities) that report a complete balance sheet in the manufacturing, services and primary sectors (roughly 500,000 firms per year), excluding the government sector. Each firm is uniquely defined by a firm-level identifier (SIREN number) common across all data sets. For each firm that reports a complete balance sheet, we have data on sales, material purchases, capital stock (value of physical assets) in Euros and total employment.<sup>9</sup> We use this information to compute firm-level value added<sup>10</sup> and revenue TFP. We compute revenue TFP from a Cobb-Douglas value-added production function with labor and physical capital as inputs and output elasticities of inputs that vary at the 2-digit NACE level. We use the Wooldridge (2009) estimator for estimating the production-function coefficients.<sup>11</sup>

The balance sheet data are complemented with information on the occupational structure of employment from DADS Etablissement. For each sample year, DADS Etablissement

---

<sup>9</sup>For the years 1994 to 2009 the source of this information is BRN. For 2011-2013 the data source is FARE, which substitutes BRN and is more comprehensive in terms of coverage. This dataset is prepared by INSEE and combines administrative data with survey information and also uses imputation. Compared to BRN, it additionally includes firms that do not report a full balance sheet. We use the subset of FARE that is consistent in terms of sample with BRN.

<sup>10</sup>Value added is computed as sales minus changes in inventories minus purchases of final goods minus purchases of materials plus changes in material inventories minus other purchases.

<sup>11</sup>The Wooldridge estimator is based on the Levinsohn-Petrin (2003) methodology but uses a one-step GMM estimator instead of a two-step approach. This estimator solves the problem that the labor coefficient may be unidentified in the first stage if labor is freely adjustable (see Akerberg, Caves and Frazer, 2015). We consider labor endogenous and use lagged labor as an instrument.



contains plant-level employment data disaggregated in five two-digit occupations: (1) firm owners receiving a wage; (2) high-skill professions (i.e., scientists, managers and engineers); (3) intermediate-skill professions (e.g., teachers, administrative assistants and technicians); (4) low-skill white-collar workers; and (5) blue-collar workers. We aggregate the occupational employment data from DADS across all plants belonging to the same firm using the SIREN identifier, thereby obtaining the occupational structure of employment for each firm in a given year. For the year 1994, DADS contains more disaggregated information on employment for 29 occupations. We use this information to construct a firm-level proxy for the extent to which employment is replaceable by robots, as explained below. For the descriptive analysis, we use the full set of years (1994-2013), while for the Instrumental Variables (IV) regressions we focus on the 1996-2013 period and use 1994 as a pre-sample year. Finally, for each firm and year, we also have customs data on exports and imports from the French customs authority (DOUANE). In particular, we observe quantities and values of imports and exports for all 8-digit products of the Combined Nomenclature (CN) classification by origin and destination country.

We leverage the detailed information on firm-level imports by product to proxy for the use of robots at the firm level. The CN classification classifies trade of industrial robots into a specific product code, CN 84795000 (CN 84798950 before 1996). Accordingly, we identify firms that import robots in a given year as firms with positive imports for this product code in that year. In the empirical analysis, we use this information to build a proxy for the adoption of foreign robots by each firm. We also measure the stock of robot capital employed by a firm at a given point in time as the cumulative sum of robot imports by the firm up to that point. Using this information, we build a second proxy for automation measuring the intensity with which the firm uses robots.<sup>12</sup>

Figure 1 plots the time series of total robot imports into France obtained by summing robot imports across all firms in our sample (hollow circles). For comparison, the figure also plots the time series of total French robot imports obtained from the Comext database (full circles). Our firm-level data follow quite closely the evolution of aggregate French robot imports implied by official statistics, and account for the majority of these imports in any given year. Interestingly, robot imports appear to be quite volatile, consistent with the lumpy

---

<sup>12</sup>As shown in the Appendix, our findings are qualitatively similar when computing the stock of robot capital using a perpetual inventory method with an annual depreciation rate of 15 percent, which falls within the range of depreciation rates normally assumed for robots in manufacturing (see, e.g., Graetz and Michaels, 2018).

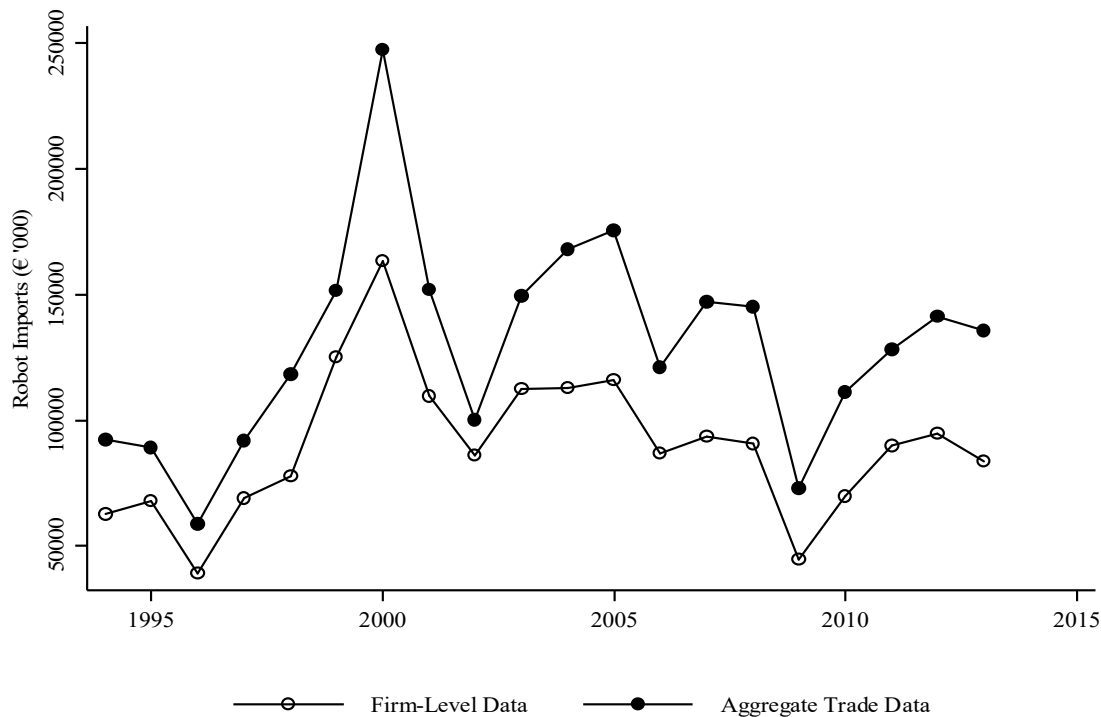


Figure 1: Robot Import, 1994-2013

nature of this investment.

Figure 2 shows the cumulative number of robot importers and the stock of imported robot capital over time. Both variables have rapidly trended upward. In particular, the number of firms with at least one year of robot imports rose from 121 in 1994 to more than 1700 in 2013. Similarly, the stock of imported robot capital increased from 63 million Euros in 1994 to around 1,8 billion Euros in 2013. Overall, these numbers suggest that automation has become increasingly widespread across French firms over the sample period.

Figure 3 reports the cumulative number of robot importers by two-digit sector. It shows that, while robot importers are observed in many different sectors, they are particularly frequent in manufacturing, especially in industries such as production of motor vehicles, machinery, and electrical equipment. Consistent with this evidence, in our econometric analysis we use a baseline sample consisting of manufacturing firms only. This also alleviates the concern that firms importing robots might be resellers. In particular, we observe more than 800 different manufacturing firms importing robots at least once over the period of analysis. This number is consistent with other existing studies. For instance, Acemoglu, Lelarge and Restrepo (2020), who collected information on robot adoption in France from multiple sources, find that only 1 percent of the firms in their sample purchased robots over the 2010-

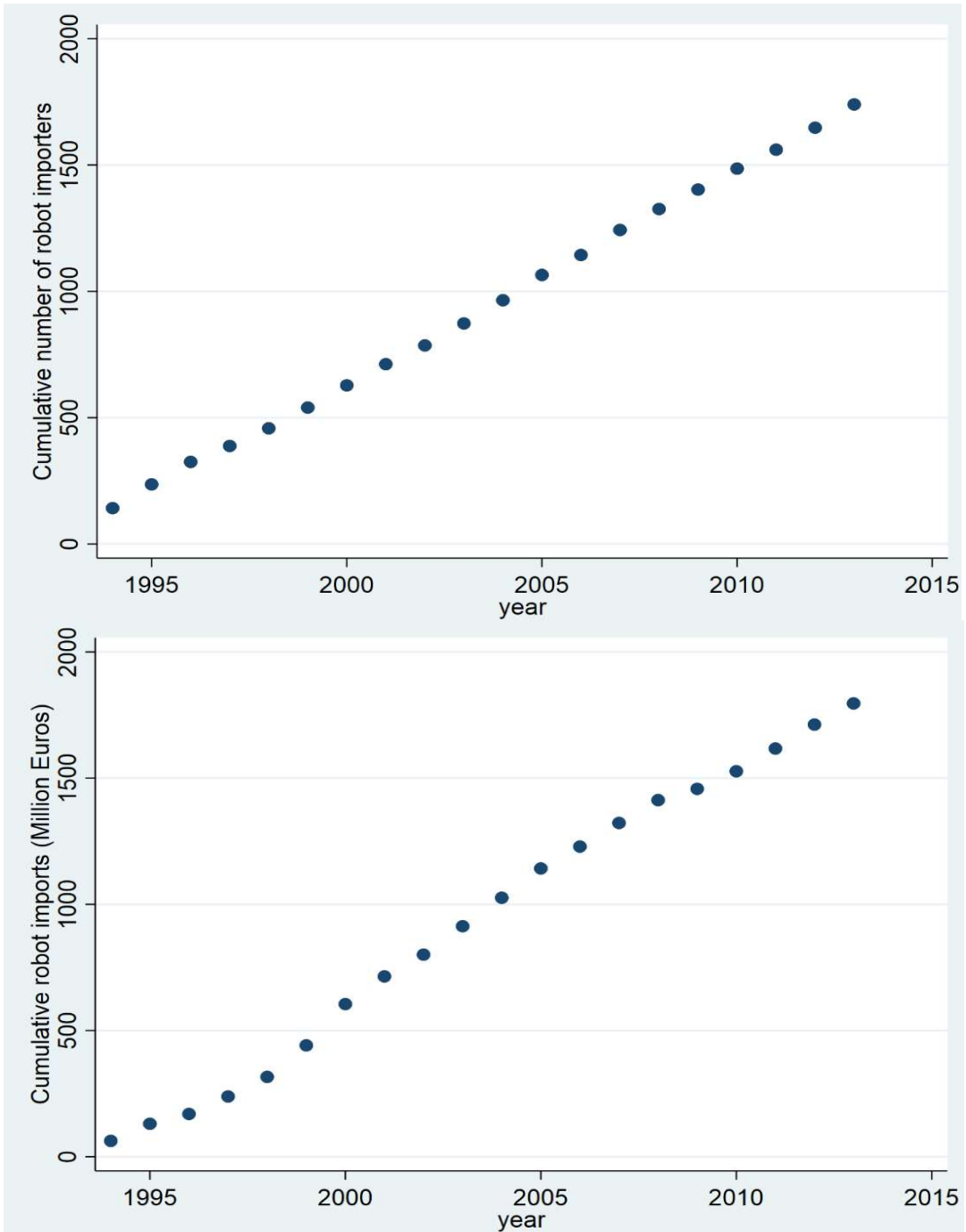


Figure 2: Cumulated Robot Importers and Import

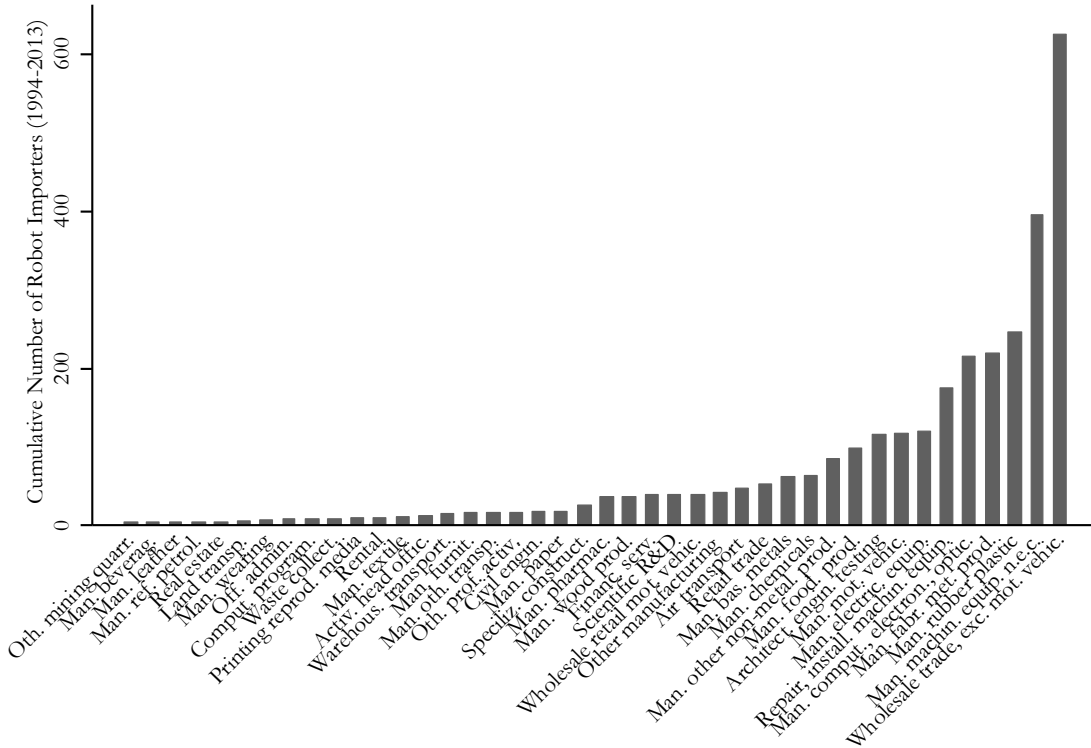


Figure 3: Cumulative number of robot importers by two-digit industry

2015 period. While robot adopters are a minority, they nevertheless account for a large and increasing fraction of sales and value added (up to 20 percent), as shown in Figure 4. We further focus on firms with more than ten employees given that robots are typically used at relatively large firms and adoption decisions by small firms tend to be more noisy and lumpy. However, the qualitative pattern of our results is largely insensitive to the choice of the estimation sample.

#### 4 PRELIMINARY EVIDENCE

We start by providing descriptive evidence on how firms that adopt robots compare to firms that do not in terms of various characteristics. Table 1 reports summary statistics on a number of firm-level variables, separately for firms that have imported robots at least once over 1994-2013 ("robot adopters") and for firms that have never imported robots over this period ("non robot adopters"). Our sample consists of 64,760 manufacturing firms. Of these, 746 are robot adopters, corresponding to 1.15 percent of all firms and 0.96 percent of all firm-

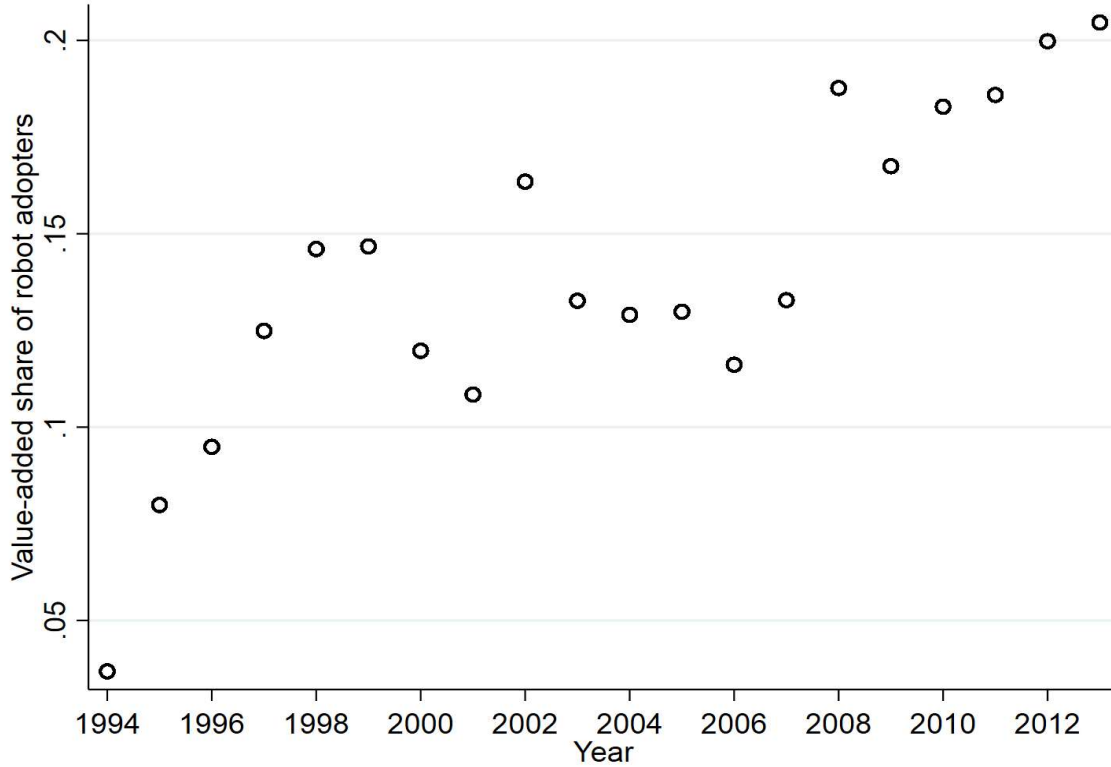


Figure 4: Sales and Value Added Shares of Robot Importers

year observations in our data set.<sup>13</sup> Robot intensity, defined as the ratio between the stock of robot capital and the total physical capital stock of the firm, equals 11 percent on average for robot adopters. The average robot adopter is around 11 times larger than the average non robot adopter in terms of employment and around 14 times larger in terms of sales. Robot adopters also exhibit around 3 times higher levels of sales per worker and around 1.5 times higher levels of Total Factor Productivity, on average. The skill composition of employment also differs across robot adopters and non robot adopters, the share of employment in high-skill professions being twice as high on average in the former group of firms than in the latter. Robot adopters are also more likely to import and export goods other than robots, and are characterized by a larger share of employment performing tasks that can be replaced

<sup>13</sup>The relatively low number of firms adopting industrial robots is consistent with other existing studies. For instance, Acemoglu, Lelarge and Restrepo (2020), who collected information on robot adoption in France from multiple sources, find that only 1 percent of the firms in their sample purchased robots over the 2010-2015 period. While robot adopters are a minority, they nevertheless account for a large fraction of sales and value added, as shown in Figure 4.

by robots.<sup>14</sup>

Table 1 also reports the average annualized change in each variable over 1994-2013, separately for the two sets of firms. Robot adopters have increased robot intensity at an average rate of 0.2 log points per year. While employment has decreased in both groups of firms, robot adopters have shed workers at a slower rate than non robot adopters (0.02 vs. 0.03 log points per year, respectively).<sup>15</sup> Robot adopters have also experienced a relatively slower reduction in sales, sales per worker and TFP, and a relatively faster increase in the employment share of high-skill professions.

To further shed light on the differences between the two groups of firms, we now estimate conditional correlations between robot adoption and firm-level characteristics, by running OLS regressions of the following form:

$$Y_{ijt} = \alpha_i + \alpha_{jt} + \beta \cdot Rob\_Adoption_{ijt} + \mathbf{X}'_{ijt} \cdot \boldsymbol{\gamma} + \varepsilon_{ijt}, \quad (17)$$

where  $i$  denotes a firm,  $j$  indicates the 5-digit NACE industry in which the firm operates, and  $t$  stands for time.  $Y_{ijt}$  is an outcome and  $Rob\_Adoption_{ijt}$  a dummy that takes on value 1 in the first year in which the firm imports robots and in all subsequent periods, and is equal to 0 otherwise. We estimate two versions of eq. (17). In the first version, we control for firm fixed effects,  $\alpha_i$ , and for 5-digit industry  $\times$  year fixed effects,  $\alpha_{jt}$ . The "robot adopter premia",  $\beta$ , are then identified by comparing outcomes, in deviations from within-firm means, across firms belonging to the same 5-digit industry and year. This approach ensures that the coefficients  $\beta$  are not contaminated either by time-invariant firm characteristics that could be correlated with adoption and outcomes or by differences in the distribution of adopters and non adopters across industries. In the second version of eq. (17), we add controls for observable firm characteristics (log sales and dummies for exporter and importer status). We measure each characteristic at baseline, that is, in the first year in which the firm is observed in the sample, and interact its first-year value with a full set of year dummies. The resulting interactions, contained in the vector  $\mathbf{X}_{ijt}$ , flexibly control for heterogeneous trends across firms characterized by different initial conditions. We correct the standard errors for clustering at the firm level to account for serially correlated shocks within firms.

The results are reported in Table 2. Odd-numbered columns show the estimates of the

---

<sup>14</sup>The replaceability of tasks by robots is constructed following Graetz and Michaels (2018) and is explained in details below. This variable refers to the year 1994 and is computed for the 36,972 firms used in the IV regressions.

<sup>15</sup>Manufacturing employment declined significantly in France during the sample period.

Table 1: Descriptive Statistics

	<b>Robot Adopters</b>					
	Obs.	No. Firms	Mean	Median	Std. Dev.	Mean $\Delta$ (annualized)
Robot adopter	6,003	746	1	1	1	0
Robot intensity	6,003	746	0.108	0.005	0.635	0.190
No. of employees	6,003	746	838	184	3,107	-0.017
Empl. sh. high skill	6,003	746	0.157	0.111	0.142	0.006
Sales (€'000)	6,003	746	758,388	42,911	6,965,072	-0.073
Sales per worker (€'000)	6,003	746	2,002	221	108,120	-0.058
VA per worker (€'000)	5,855	742	183	164	2,802	-0.069
TFP	5,848	741	422	164	2,702	-0.066
Importer	6,003	746	0.973	1	0.163	0.001
Exporter	6,003	746	0.950	1	0.218	0.002
Replaceability	513	513	0.372	0.403	0.185	-
	<b>Non Robot Adopters</b>					
Robot adopter	616,798	64,014	0	0	0	0
Robot intensity	604,409	64,014	0	0	0	0
No. of employees	616,798	64,014	77	27	309.54	-0.029
Empl. sh. high skill	616,798	64,014	0.082	0.056	0.107	0.003
Sales (€'000)	616,794	64,014	53,465	7,385	673,610	-0.091
Sales per worker (€'000)	616,794	64,014	653	223	11,554	-0.063
VA per worker (€'000)	604,960	63,307	187	69	1,945	-0.066
TFP	593,795	62,571	287	128	1,343	-0.071
Importer	616,798	64,014	0.560	1	0.4963	0.001
Exporter	616,798	64,014	0.554	1	0.4971	0.004
Replaceability	36,459	36,459	0.356	0.358	0.190	-

The whole sample consists of all manufacturing firms with more than 10 employees (64,760 firms). Robot adopter is a dummy taking on value 1 since the first year in which a firm imports robots. Robot intensity is the ratio between the stock of robot capital and the total capital stock of the firm; the stock of robot capital is constructed as the cumulative sum of robot imports. Importer and Exporter are dummies taking on value 1 if the firm imports (resp. exports) in a given year and 0 otherwise. Replaceability is the share of firm employment in occupations that can be replaced by robots. All statistics are computed on firm-level observations for the 1994-2013 period, except for Replaceability, which is observed in 1994 and is computed for 36,972 firms used in the instrumental variables regressions. Changes are computed as annualized log differences, except for Employment sh. high skill, Exporter and Importer, for which we report annualized changes in levels.

Table 2: Firm-Level Outcomes and Robot Adoption, Panel (OLS)

	(1)	(2)	(3)	(4)	(5)	(6)
	ln Sales		ln Employment		ln Sales per Worker	
Rob_Adoption	0.130*** [6.113]	0.198*** [9.546]	0.093*** [4.622]	0.114*** [5.664]	0.039*** [2.614]	0.087*** [5.797]
Obs.	615,785	614,427	617,229	615,595	615,785	614,427
R2	0.949	0.95	0.878	0.878	0.89	0.891
	ln VA per Worker		ln TFP		Empl. Sh. High Skill	
Rob_Adoption	0.011 [0.707]	0.051*** [3.155]	0.030** [2.042]	0.067*** [4.492]	0.011*** [4.195]	0.003 [0.973]
Obs.	605,217	603,926	593,996	592,746	617,229	615,595
R2	0.815	0.815	0.857	0.858	0.677	0.679
Firm FE	Yes	Yes	Yes	Yes	Yes	Yes
Industry $\times$ year FE	Yes	Yes	Yes	Yes	Yes	Yes
Controls	No	Yes	No	Yes	No	Yes

The dependent variables are annual observations of the firm-level outcomes indicated in columns' headings. Rob\_Adoption is a dummy equal to 1 for all years since the firm starts importing robots, and equal to 0 otherwise. Industry refers to 5-digit industries. The control variables included in columns (2) and (4) are log sales and dummies for whether the firm is an importer or an exporter, observed in the first year in which the firm appears in the sample and interacted with a full set of year dummies. Standard errors are clustered at the firm level, t-statistics are reported in square brackets. \*\*\*, \*\*, \* denote significance at the 1, 5 and 10% level, respectively.

specification including only firm and industry  $\times$  year fixed effects. Even-numbered columns report the results obtained by adding interactions between year dummies and the initial-period value of three firm characteristics: log sales and indicators for importing and exporting firms. Both specifications are estimated for six major outcomes on which we focus throughout the paper: (i) log sales, (ii) log employment, (iii) log sales per worker, (iv) log value added per worker, (v) log TFP, and (vi) the employment share of high-skill professions. All estimates of  $\beta$  are positive and, except for two cases, they are also highly statistically significant. These results confirm that robot adopters are larger, more productive and more skill-intensive than non robot adopters, even when accounting for time-invariant firm characteristics, firm-specific trends and the industry of operation.

The differences between robot adopters and non robot adopters just documented may have two interpretations: either robot adopters differ from other firms before adopting robots, or they start diverging afterward. To shed light on this question, we now use a difference-in-differences event study approach to analyze how the six outcomes evolve over time in firms that adopt robots relative to firms that do not. To this purpose, we extend eq. (17) by



adding the first five lags and leads of  $Rob\_Adoption_{ijt}$ :

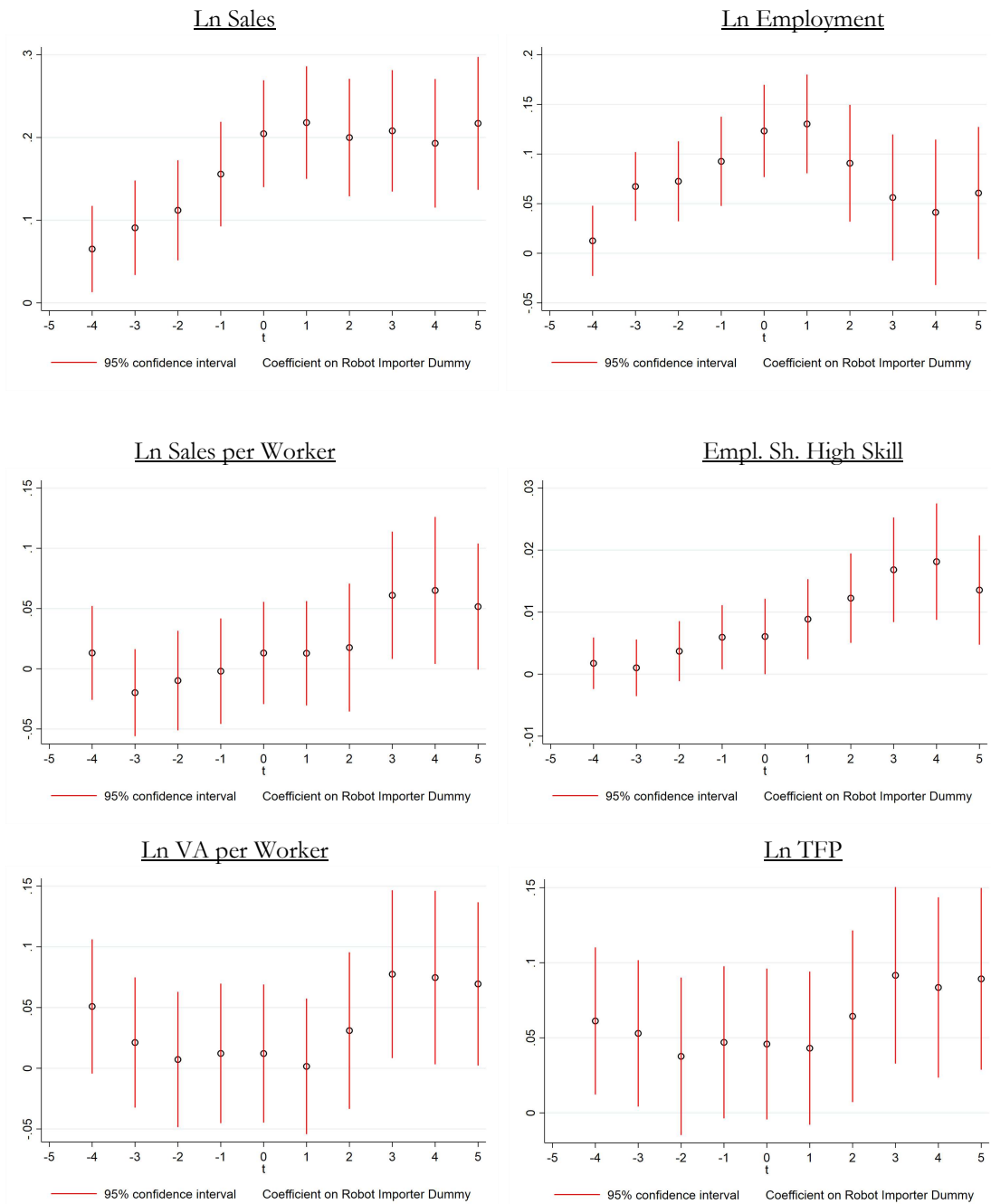
$$Y_{ijt} = \alpha_i + \alpha_{jt} + \sum_{s=-5}^5 \beta_s \cdot Rob\_Adoption_{ijt-s} + \varepsilon_{ijt}. \quad (18)$$

The coefficients  $\beta_s$  estimated from eq. (18) illustrate how a given outcome evolves over time within robot adopters relative to non robot adopters, over a ten-year window around the first instance of robot imports. As before, we correct the standard errors for clustering at the firm level.

The results are reported in Figure 5, where each graph refers to a different outcome. We report in the Appendix the estimation coefficients corresponding to the plots. Note that robot adoption is antedated by significant differences in the trends of sales and employment between robot adopters and non robot adopters. In particular, the former group of firms grow faster than the latter in terms of both variables over the five-year period preceding adoption. Conversely, no clear differential pre-trend is detected in terms of efficiency and the skill composition of the workforce. After adoption, the diverging trends in employment is reversed: while robot adopters still grow faster than non robot adopters, the differential gradually vanishes. Robot adopters also experience a more marked shift in the skill composition of the workforce toward high-skill professions, and a faster increase in efficiency, which takes approximately two years to unfold. No differential trend is instead observed in terms of sales after adoption, which suggests that the efficiency gains from robot adoption may not translate into lower prices. Overall, these results suggest that robot adoption occurs after periods of expansion in firm size, and is followed by employment losses, improvements in firm efficiency, labor demand shifts toward high-skill workers and, possibly, increases in firm markups.

## 5 IDENTIFYING THE EFFECTS OF ROBOTS ON FIRM-LEVEL OUTCOMES

Both our theoretical model and the preliminary evidence suggest that the correlations between robot adoption and other firm-level characteristics may be confounded by demand shocks, which are likely to influence both the outcomes of a firm and its choice to automate. The difference-in-differences event study confirms the existence of pretrends for employment and sales, but also suggest that these trends may stop or even reverse after adoption. In this section, we use two complementary strategies to purge away demand shocks and identify the effects of robots. First, we exploit yearly within-firm variation and regress outcomes on robot intensity, a variable that should not be influenced by demand shocks according to our model



Each graph plots coefficients and confidence intervals on various lags and leads of *Rob\_Adoption* estimated using eq. (18) for a different outcome variable (indicated in the heading of the graph). *Rob\_Adoption* is a dummy that takes on value 1 in the first year in which a firm imports robots and in all subsequent periods, and is equal to 0 otherwise. Lags and leads of *Rob\_Adoption* are indicated on the horizontal axes of the graphs, with  $t=0$  referring to the first year in which a firm has imported robots. The estimated coefficients corresponding to each graph are reported in Table A1.

Figure 5: Difference-in-differences event studies

Table 3: Firm-Level Outcomes and Ln Robot Intensity, Panel (OLS)

	(1)	(2)	(3)	(4)	(5)	(6)
	Ln Sales		Ln Employment		Ln Sales per Worker	
Ln Rob_Intensity	-0.141***	-0.138***	-0.191***	-0.186***	0.033*	0.029
	[-4.396]	[-4.253]	[-5.882]	[-5.661]	[1.861]	[1.589]
Obs.	5,998	5,948	6,003	5,953	5,998	5,948
R2	0.982	0.982	0.955	0.956	0.885	0.886
	Ln VA per Worker		Ln TFP		Empl. Sh. High Skill	
Ln Rob_Intensity	0.052***	0.056***	0.026*	0.032**	0.018***	0.018***
	[3.074]	[3.265]	[1.668]	[2.119]	[2.936]	[2.708]
Obs.	5,823	5,773	5,817	5,767	6,003	5,953
R2	0.795	0.798	0.883	0.885	0.876	0.877
Firm FE	Yes	Yes	Yes	Yes	Yes	Yes
Industry $\times$ year FE	Yes	Yes	Yes	Yes	Yes	Yes
Controls	No	Yes	No	Yes	No	Yes

The dependent variables are annual observations of the firm-level outcomes indicated in columns' headings. Ln Rob\_Intensity is the log ratio between the cumulative stock of robot capital and the total capital stock of the firm. Industry refers to 5-digit industries. The control variables included in columns (2) and (4) are log sales and dummies for whether the firm is an importer or an exporter, observed in the first year in which the firm appears in the sample and interacted with a full set of year dummies. Standard errors are clustered at the firm level, t-statistics are reported in squared brackets. \*\*\*, \*\*, \* denote significance at the 1, 5 and 10% level, respectively.

(Section 5.1). Second, we focus on long-run changes in outcomes within firms, and exploit variation in the decision to adopt robots as driven by pre-existing differences in technological characteristics determining the predisposition to automate (Section 5.2).

## 5.1 ROBOT INTENSITY

In our first approach, we re-estimate eq. (17) replacing the dummy  $Rob\_Adoption_{ijt}$  with our proxy for the intensity with which a firm uses robots,  $\ln Rob\_Intensity_{ijt}$ , defined as the log ratio between the stock of robot capital and the total capital stock of the firm. This variable is the empirical counterpart of the theoretical measure introduced in eq. (15). By scaling robot capital with the total capital stock of the firm,  $\ln Rob\_Intensity_{ijt}$  neutralizes demand shocks, as the latter should affect both the numerator and the denominator of the ratio. The log transformation implies that  $\ln Rob\_Intensity_{ijt}$  is defined only for robot adopters. Because the specification controls for firm and 5-digit industry  $\times$  year fixed effects, the coefficients  $\beta$  are identified from changes in robot intensity over time within robot adopters, controlling for common shocks hitting all firms in a narrow sector.

The results are reported in Table 3. Odd-numbered columns refer to the specification that only controls for firm and industry-year fixed effects, while even-numbered columns refer to the specification that also includes the interactions of the year dummies with initial firm size and indicators for the initial import and export status of the firm. Compared to the results reported in Table 2, the estimate of  $\beta$  switches from positive to negative in the regressions for sales and employment, and is highly statistically significant. This pattern suggests that demand shocks lead firms to both expand and automate, resulting in a spurious positive correlation between robot adoption and firm size. That the relation between robot adoption and employment turns negative once demand shocks are neutralized is consistent with the idea that automation leads to job displacement. In terms of magnitude, multiplying the coefficient on  $\ln Rob\_Intensity_{ijt}$  in the employment regression by the average annual change in robot intensity reported in Table 1 (0.2 log points) implies that the observed increase in robot intensity explains an average fall in employment equal to 3.5 percent per year among robot adopters. Regarding the other outcomes, Table 3 continues to show positive estimates of  $\beta$  across the board. While some of these coefficients are only marginally significant, the qualitative pattern of results suggests that robots tend to improve firm efficiency and to shift labor demand in favor of high-skill workers. As shown in the Appendix (see Table 9), these results are very similar if we assume a 15 percent depreciation rate when constructing the cumulative stock of robot capital.

## 5.2 INSTRUMENTAL VARIABLES

Our second approach to identify the effects of automation on firm-level outcomes consists of using IV to isolate the variation in robot adoption that is not contaminated by demand shocks. To operationalize this approach, we estimate long-difference specifications of the following form:

$$\Delta Y_{ij} = \alpha_s + \beta \cdot \Delta Rob\_Adoption_{ij} + \mathbf{X}'_{ij} \cdot \boldsymbol{\gamma} + \Delta \varepsilon_{ij}, \quad (19)$$

where  $i$  indexes firms and  $j$  denotes 5-digit industries;  $\Delta Y_{ij}$  is the annualized change in outcome  $Y$  for firm  $i$  between the first and the last year in which the firm is present in the sample;  $\Delta Rob\_Adoption_{ij}$  takes on value 1 if firm  $i$  has adopted robots over the sample period, and is equal to 0 both for non-adopters and for firms that were already using robots initially;  $\mathbf{X}_{ij}$  are start-of-period values of control variables (described below); and  $\alpha_s$  are fixed effects for 3-digit sectors. By eliminating year-on-year variation, the use of long differences implies that the coefficient  $\beta$  is identified from cross-sectional differences in the growth of outcomes

between robot adopters and other firms. The sector fixed effects,  $\alpha_s$ , absorb differential trends in adoption and outcomes across sectors, while the covariates,  $\mathbf{X}_{ij}$ , remove heterogeneous trends across firms characterized by different initial conditions within the same sector.

Demand shocks could bias the OLS estimate of  $\beta$  from eq. (19) if they both induced firms to adopt robots and influenced the outcomes. Hence, we instrument  $\Delta Rob\_Adoption_{ij}$  using a variable that is meant to eliminate the effect of demand shocks by isolating the variation in adoption occurring for technological reasons. Because most of the variation in robot adoption is across firms, finding a strong instrument for  $\Delta Rob\_Adoption_{ij}$  in the context of eq. (19) is easier than explaining the exogenous within-firm variation in  $Rob\_Adoption_{ijt}$  in the context of eq. (17).

To construct the instrument, we follow the insight that a reduction in the cost of machines should affect robot adoption relatively more in firms that are more prone to automate. To capture this idea, we exploit the fact that the different nature of the production process across industries makes production easier to automate in some industries than in others, implying that the cost of automation should fall relatively more over time in the former industries. At the same time, within a given industry, some firms are more prone than others to automate production, because they perform activities that are relatively easier to assign to robots. Accordingly, our instrument, labeled  $Rob\_Exposure_{ij}$ , is obtained by interacting a proxy for how suitable production is for automation in a given industry,  $Rob\_Suitability_{ij}$ , with a proxy for the ease with which robots can replace worker activities within a given firm,  $Replaceability_{ij}$ .

For each firm  $i$ ,  $Rob\_Suitability_{ij}$  is defined as the average robot intensity of all firms  $i' \neq i$  in the same 5-digit industry  $j$  in the initial year, and is constructed as follows:

$$Rob\_Suitability_{ij} = \sinh^{-1} \left( \frac{\sum_{i' \neq i \in j} Rob\_Stock_{i'j}}{\sum_{i' \neq i \in j} Cap\_Stock_{i'j}} \right),$$

where  $Rob\_Stock_{i'j}$  and  $Cap\_Stock_{i'j}$  denote, respectively, the initial stock of robots and the initial total capital stock of firm  $i' \neq i \in j$ . Note that we apply the hyperbolic sine transformation, rather than the log, to the ratio of robot capital over total capital so as that keep the zeros. Industries in which this ratio is higher are relatively more suitable for automation and should thus experience a relatively larger fall in the cost of robots in subsequent years.

As for  $Replaceability_{ij}$ , we follow Graetz and Michaels (2018) and exploit differences across firms in the prevalence of tasks that can be assigned to robots. Our measure is similar to the Graetz and Michaels (2018) indicator but is defined at the firm-level rather than at the

industry level. To build it, we start by sourcing from Graetz and Michaels (2018) information on whether each of 377 US Census occupations is replaceable or not. The authors define an occupation as replaceable if its title corresponds to at least one of the robot application categories identified by the International Federation of Robotics, such as welding, painting and assembling.<sup>16</sup> Then, we manually map each US Census occupation into the 29 French occupations for which we have employment data in 1994. With this information in hand, we construct the firm-level replaceability measure as follows:

$$Replaceability_{ij} = \sum_{o=1}^{29} \omega_{oij} \times Replaceability_o,$$

where  $Replaceability_o$  is the replaceability of French occupation  $o$  and  $\omega_{oij}$  is the share of occupation  $o$  in firm  $i$ 's employment in 1994.

The instrument,  $Rob\_Exposure_{ij}$ , is finally obtained as

$$Rob\_Exposure_{ij} = Rob\_Suitability_{ij} \times Replaceability_{ij}.$$

Accordingly, our instrument captures variation in robot exposure across firms that operate in industries with different suitability for automation and exhibit a different prevalence of automatable tasks in production.<sup>17</sup>

To be a valid instrument for  $\Delta Rob\_Adoption_{ij}$ ,  $Rob\_Exposure_{ij}$  must be uncorrelated with  $\Delta \varepsilon_{ij}$  in eq. (19) conditional on the covariates. In this respect, the sector fixed effects  $\alpha_s$  remove sector characteristics that could be correlated with  $Rob\_Exposure_{ij}$  and affect the evolution of outcomes across all firms in a sector. Moreover, we control for the start-of-period values of log firm sales and of indicators for exporting and importing firms, included in the vector  $\mathbf{X}_{ij}$  along with  $Rob\_Suitability_{ij}$  and  $Replaceability_{ij}$ . These predetermined firm-level controls account for the fact that, within a given sector, larger and more trade-oriented firms may be more prone to adopt robots and may systematically follow different paths in terms of key outcomes. Then, our identification strategy exploits differential exposure to robot adoption across firms and 5-digit industries within 3-digit sectors: firms that are most exposed to robots in a sector are those with high levels of  $Replaceability_{ij}$  operating in

---

<sup>16</sup>Previous studies have investigated the effect of new technologies on occupations involving routine tasks (e.g., Autor, Levy, and Murnane, 2003). However, Cheng et al. (2019) find that robots are more prevalent at firms where employees are commonly doing manual tasks, but not those that require routine tasks.

<sup>17</sup>See the Appendix (Table 10) for descriptive statistics on  $Rob\_Exposure_{ij}$  and the other variables used in the IV regressions.

Table 4: Firm-Level Outcomes and Robot Adoption, Long Differences (OLS)

	(1)	(2)	(3)	(4)	(5)	(6)
	$\Delta \ln \text{Sales}$		$\Delta \ln \text{Employment}$		$\Delta \ln \text{Sales per Worker}$	
$\Delta \text{Rob\_Adoption}$	0.025***	0.023***	0.021***	0.044***	0.043***	0.021***
	[6.450]	[7.145]	[6.490]	[10.565]	[10.570]	[4.572]
Obs.	36,666	36,950	36,972	36,666	36,666	36,666
R2	0.057	0.032	0.030	0.075	0.075	0.055
	$\Delta \ln \text{VA per Worker}$		$\Delta \ln \text{TFP}$		$\Delta \text{Empl. Sh. High Skill}$	
$\Delta \text{Rob\_Adoption}$	0.001	0.017***	0.005	0.019***	0.001***	0.000
	[0.190]	[4.091]	[1.350]	[5.277]	[3.250]	[0.303]
Obs.	35,534	35,534	33,964	33,964	36,972	36,950
R2	0.029	0.043	0.036	0.050	0.020	0.032
Controls	Industry FE	All Controls	Industry FE	All Controls	Industry FE	All Controls

The dependent variables are the annualized changes in the firm-level outcomes indicated in columns' headings.  $\Delta \text{Rob\_Adoption}$  is a dummy equal to 1 for firms that start importing robots over the sample period and equal to 0 for non-importers. Industry fixed effects are dummies for 3-digit industries. The control variables included in columns (2) and (4) are the employment share of occupations that can be replaced by robots in 1994 (Replaceability), the log ratio between the overall stock of robots and the total capital stock of all other firms in each 5-digit industry in 1994 (Rob\_Suitability), and the initial values of log sales and of dummies for importing and exporting firms. Standard errors clustered at the 5-digit industry level, t-statistics are reported in squared brackets. \*\*\*, \*\*, \*: denote significance at the 1, 5 and 10% level, respectively.

industries with high levels of  $\text{Rob\_Suitability}_{ij}$ .

Table 4 reports the OLS estimates of eq. (19), together with standard errors corrected for clustering within 5-digit industries. As indicated in the columns' headings, the dependent variables are the log changes in sales, employment, sales per worker, value added per worker and TFP, and the change in the employment share of high-skill professions.<sup>18</sup> For each outcome, the table presents results from a specification including only the industry fixed effects (odd-numbered columns) and from the complete specification including also the control variables (even-numbered columns). Consistent with the findings presented in the previous section, Table 4 shows that firms that adopt robots over the sample period experience a relatively larger increase in size, a relatively stronger improvement in efficiency and a relatively faster shift in labor demand toward high-skill workers.

The IV estimates of eq. (19) are reported in Table 5. Column (1) shows the first-stage results. The coefficient on the instrument  $\text{Rob\_Exposure}_{ij}$  is positive and statistically significant: firms that are more exposed to robots due to pre-existing technological char-

<sup>18</sup>We winsorize the change in each outcome at the top and bottom 5 percent of the distribution to prevent results from being driven by extreme observations.

Table 5: Firm-Level Outcomes and Robot Adoption, Long Differences (IV)

	(1)	(2)	(3)	(4)	(5)	(6)	(7)
	$\Delta \text{Rob\_Adoption}$	$\Delta \ln \text{Sales}$	$\Delta \ln \text{Employment}$	$\Delta \ln \text{Sales per Worker}$	$\Delta \ln \text{VA per Worker}$	$\Delta \ln \text{TFP}$	$\Delta \text{Empl. Sh. High Skill}$
$\Delta \text{Rob\_Adoption}$		0.192 [0.422]	-0.557** [-2.006]	1.019** [2.100]	1.188* [1.864]	0.816 [1.521]	0.047** [2.024]
$\text{Rob\_Exposure}$	0.002*** [2.898]						
$\text{Replaceability}$	0.033*** [2.657]	-0.021*** [-3.423]	-0.021*** [-6.324]	0.002 [0.291]	-0.005 [-0.666]	-0.013** [-2.102]	-0.003*** [-7.431]
$\text{Rob\_Suitability}$	0.344** [2.334]	0.196 [0.504]	-0.085 [-0.308]	0.289 [0.743]	0.244 [0.516]	0.113 [0.253]	0.085** [2.407]
$\ln \text{Initial Sales}$	0.013*** [7.308]	-0.017*** [-2.665]	0.007** [2.111]	-0.027*** [-4.458]	-0.029*** [-3.764]	-0.023*** [-3.260]	0.000 [0.272]
$\text{Dummy Initial Importer}$	0.000 [0.127]	0.015*** [6.561]	0.001 [0.787]	0.014*** [5.704]	0.015*** [5.365]	0.014*** [6.172]	0.001** [2.380]
$\text{Dummy Initial Exporter}$	0.001 [0.724]	0.006*** [3.124]	-0.004*** [-2.762]	0.011*** [4.557]	0.009*** [3.605]	0.008*** [4.001]	0.001*** [3.610]
Obs.	36,950	36,666	36,950	36,666	35,534	33,964	36,950
KP F-Statistic		8.745	8.399	8.745	7.370	7.081	8.399

The dependent variables are indicated in columns' headings and are:  $\Delta \text{Rob\_Adoption}$ , a dummy equal to 1 for firms that start importing robots over the sample period and equal to 0 for non-importers (column 1); the annualized changes in log sales (column 2), log employment (column 3), log sales per worker (column 4), log value added per worker (column 5), log TFP (column 6) and the employment share of high-skill professions (column 7).  $\text{Rob\_Exposure}$  is the product between the firm-level employment share of occupations that can be replaced by robots in 1994 ( $\text{Replaceability}$ ) and the log ratio between the overall stock of robots and the total capital stock of all other firms in each 5-digit industry in 1994 ( $\text{Rob\_Suitability}$ ). All regressions also include 3-digit industry fixed effects. Standard errors are clustered at 5-digit industry level, t-statistics are reported in squared brackets. \*\*\*, \*\*, \*: denote significance at the 1, 5 and 10% level, respectively.

acteristics do indeed show a greater tendency to adopt robots in subsequent years. As for the other regressors, the positive and precisely estimated coefficients on  $\text{Replaceability}_{ij}$  and  $\text{Rob\_Suitability}_{ij}$  imply that robot adoption is relatively higher in firms that perform more automatable tasks in the pre-sample period and in industries in which production is more suitable for automation.  $\Delta \text{Rob\_Adoption}_{ij}$  is also positively correlated with initial firm sales. As predicted by the model, this result implies that initially larger firms tend to adopt more robots in the future, and highlights the importance of controlling for size in eq. (19) to eliminate a potential source of correlation between  $\text{Rob\_Exposure}_{ij}$  and  $\Delta \varepsilon_{ij}$ .

The second-stage estimates of  $\beta$  are reported in columns (2)-(5) of Table 5. Each column refers to a different outcome, as indicated in the column's heading. The corresponding reduced-form coefficients, obtained by regressing each outcome on  $\text{Rob\_Exposure}_{ij}$  and the full set of fixed effects and controls, are reported in panel a) of Table 6. In the regression for the log change in employment, the reduced-form coefficient on  $\text{Rob\_Exposure}_{ij}$  is equal to  $-0.001$  and is very precisely estimated. This implies that firms that are more exposed to robots, owing to the interplay between their industry's initial suitability for automation and their pre-sample specialization in automatable tasks, experience a relatively larger



reduction in employment over the sample period. Taking the ratio between the reduced-form and the first-stage coefficient on  $Rob\_Exposure_{ij}$  yields the second-stage coefficient on  $\Delta Rob\_Adoption_{ij}$ . The latter is equal to  $-0.557$  and is precisely estimated, implying that exogenous robot adoption leads firms to shed workers.<sup>19</sup>

By comparing the OLS and second-stage coefficients on  $\Delta Rob\_Adoption_{ij}$ , we can have a sense of how much of the correlation between robot adoption and employment changes is due to exogenous automation and how much reflects instead demand shocks. Following Autor, Dorn and Hanson (2013), the OLS coefficient on  $\Delta Rob\_Adoption_{ij}$ ,  $\beta_{OLS}$ , can be decomposed as follows:

$$\beta_{OLS} = \beta_{IV} \times \frac{\sigma_{IV}^2}{\sigma^2} + \beta_{RES} \times \frac{\sigma_{RES}^2}{\sigma^2},$$

where  $\beta_{IV}$  is the second-stage coefficient on  $\Delta Rob\_Adoption_{ij}$ ,  $(\sigma_{IV}^2/\sigma^2)$  is the fraction of the overall variance of  $\Delta Rob\_Adoption_{ij}$  explained by the fitted values of the first-stage regression (exogenous adoption), and  $(\sigma_{RES}^2/\sigma^2)$  is the residual fraction explained by demand shocks (endogenous adoption). We estimate  $(\sigma_{IV}^2/\sigma^2)$  to be equal to 4.3 percent in our data, implying that robot adoption is largely driven by demand shocks. Using these numbers along with the estimates of  $\beta_{OLS}$  and  $\beta_{IV}$  reported in Tables 4 and 5, respectively, yields  $\beta_{RES} = 0.049$ . Accordingly, exogenous adoption explains an average annual fall in employment equal to 2.4 percentage points in robot adopters relative to non robot adopters (i.e.,  $\beta_{IV} \times (\sigma_{IV}^2/\sigma^2)$ ). Residual adoption due to demand shocks is instead associated with an average annual increase in employment equal to 4.7 percentage points in the former group of firms relative to the latter (i.e.,  $\beta_{RES} \times (\sigma_{RES}^2/\sigma^2)$ ).

Turning to the other outcomes, Table 5 exhibits positive and statistically significant coefficients on  $\Delta Rob\_Adoption_{ij}$  in the regressions for log sales per worker and log value added per worker, and a positive and marginally insignificant coefficient in the regression for log TFP. The table also shows a precisely estimated and positive coefficient on  $\Delta Rob\_Adoption_{ij}$  in the regression for the employment share of high-skill professions. Hence, the IV results confirm our previous evidence, according to which robot adoption induces firms to raise efficiency and shifts labor demand in favor of high-skill workers. The effect of robot adoption on

---

<sup>19</sup>One concern may be the relatively low first-stage F-statistics, which are around 8. Yet, we can test for the significance of the IV coefficients using the Anderson-Rubin weak-instrument robust test statistic. With one endogenous variable and one instrument this is equivalent to testing for the significance of the instrument in the reduced form (Chernozhukov and Hansen, 2008). In this respect, the very precise estimate for  $Rob\_Exposure_{ij}$  in Table 6 is reassuring.

total sales, while positive, is not statistically significant, suggesting again that the productivity gains from automation may not always translate into lower prices. The reduced-form estimates confirm positive effects for these other outcomes, which are all significant except for sales.

A possible concern with our identification strategy is that the suitability of an industry for automation,  $Rob\_Suitability_{ij}$ , could be correlated with other industry-level factors that influence outcomes differentially across firms with heterogeneous levels of  $Replaceability_{ij}$ . To raise confidence in our IV results, we therefore augment the specification by adding other industry-level characteristics, both linearly and interacted with  $Replaceability_{ij}$ . In particular, we consider: (i) total imports and exports, to account for differences in import competition and export opportunities across industries; (ii) the average unit value of imports, to accommodate cross-industry differences in the cost of sourcing inputs from abroad; (iii) the average unit value of exports, to account for cross-industry differences in product characteristics such as quality; (iv) capital goods imports and (v) technology goods imports, to control for other forms of foreign technologies. Similar to  $Rob\_Suitability_{ij}$ , we construct each of these variables in the initial year by aggregating across firms other than  $i$ . The results are reported in panels b) and c) of Table 6, which contain second-stage and reduced-form coefficients, respectively. Reassuringly, the estimated coefficients are similar to our baseline estimates, suggesting that our evidence is unlikely to be confounded by other industry-level characteristics that could interact with replaceability.

Another concern is that the results might be driven by firms who import robots to resell and install them, rather than for their use in production. Unfortunately, we cannot identify these firms directly in the data. Yet, these firms are likely to be concentrated in very specific sectors, possibly outside of manufacturing. Moreover, to the extent that these firms provide services that are not replaceable themselves by robots, they would not be picked up by our IV estimates. Nevertheless, to dissipate any remaining concern, we replicate both IV and reduced-form estimations on the sample without sector 33, which includes firms involved in the repair and installation of machinery and equipment. Panels d) and e) of Table 6 report the IV and reduced-form estimates and corroborate our expectation that removing these firms has no bearing on the results.

### 5.3 HETEROGENEOUS EFFECTS: ROBOTS AND THE DEMAND ELASTICITY

In this final section, we test the additional prediction of the model that the effect of automation on sales and employment should vary with the elasticity of demand. In particular, in

Table 6: Firm-Level Outcomes and Robot Adoption, Long Differences (IV and RF)

	(1)	(2)	(3)	(4)	(5)	(6)
	$\Delta \ln \text{ Sales}$	$\Delta \ln \text{ Employment}$	$\Delta \ln \text{ Sales per Worker}$	$\Delta \ln \text{ VA per Worker}$	$\Delta \ln \text{ TFP}$	$\Delta \text{ Empl. Sh. High Skill}$
<b>a) Reduced Form (RF)</b>						
Rob_Exposure	0.0003 [0.411]	-0.001*** [-2.733]	0.001** [2.561]	0.002** [2.268]	0.001* [1.687]	0.0001** [2.256]
Obs.	36,666	36,950	36,950	35,534	33,964	36,950
R2	0.074	0.032	0.033	0.043	0.050	0.033
<b>b) Additional Interactions of Replaceability, IV</b>						
$\Delta \text{ Rob\_Adoption}$	0.380 [0.641]	-0.824** [-2.293]	1.528** [2.289]	1.719** [2.221]	1.250* [1.958]	0.080** [2.264]
Obs.	36,903	36,903	36,903	36,903	36,903	36,903
KP F-Statistic	7,333	7,333	7,333	7,333	7,333	7,333
<b>c) Additional Interactions of Replaceability, RF</b>						
Rob_Exposure	0.001 [-0.619]	-0.001*** [-3.226]	0.002** [1.788]	0.002** [2.696]	0.002** [2.153]	0.0001*** [3.320]
Obs.	36,903	36,903	36,903	36,903	36,903	36,903
R2	0.076	0.033	0.076	0.038	0.050	0.034
<b>d) Excluding Repair and Installation of Machinery and Equipment, IV</b>						
$\Delta \text{ Rob\_Adoption}$	0.148 [0.336]	-0.516** [-2.049]	0.884** [2.019]	1.000* [1.822]	0.655 [1.391]	0.043** [1.998]
Obs.	34,469	34,745	34,469	33,376	31,878	34,745
KP F-Statistic	9.737	9.387	9.737	8.709	8.371	9.387
<b>e) Excluding Repair and Installation of Machinery and Equipment, RF</b>						
Rob_Exposure	0.000 [0.328]	-0.001*** [-2.644]	0.002** [2.129]	0.002** [2.044]	0.001 [1.455]	0.0001** [2.503]
Obs.	34,469	34,745	34,469	33,376	31,878	34,745
R2	0.076	0.033	0.056	0.044	0.051	0.034

The dependent variables are the annualized changes in the firm-level outcomes indicated in columns' headings.  $\Delta \text{ Rob\_Adoption}$  is a dummy equal to 1 for firms that start importing robots over the sample period and equal to 0 for non-importers.  $\text{Rob\_Exposure}$  is the product between the firm-level employment share of occupations that can be replaced by robots in 1994 (Replaceability) and the log ratio between the overall stock of robots and the total capital stock of all other firms in each 5-digit industry in 1994 ( $\text{Rob\_Suitability}$ ). Coefficients in panels a), c) and e) are estimated with OLS. Coefficients in panels b) and d) are estimated with IV as in Table 5. Panels b) and c) also control for the initial values of: sectoral exports; sectoral imports; sectoral export unit value; sectoral import unit value; capital goods imports; and technology goods imports. These controls enter both linearly and interacted with Replaceability. Panels d) and e) use the sample excluding firms in sector 33 (Repair and Installation of Machinery and Equipment). All specifications include 3-digit industry fixed effects. Standard errors are clustered by industry at 5-digit level, t-statistics are reported in squared brackets. \*\*\*, \*\*, \*: denote significance at the 1, 5 and 10% level, respectively.

Table 7: Firm-Level Outcomes, Robots and Demand Elasticity

	<b>a) Levels - Panel OLS</b>					
	(1)	(2)	(3)	(4)	(5)	(6)
	Ln Sales	Ln Employment	Ln Sales per Worker	Ln VA per Worker	Ln TFP	Empl. Sh. High Skill
Ln Rob_Intensity	-0.227*** [-4.206]	-0.165*** [-3.330]	-0.043 [-1.385]	0.017 [0.459]	0.007 [0.210]	0.018* [1.962]
Ln Rob_Intensity*Elasticity	0.022*** [3.095]	0.004 [0.490]	0.014*** [2.728]	0.007 [1.010]	0.004 [0.654]	-0.001 [-0.664]
Obs.	5,515	5,520	5,515	5,352	5,346	5,520
R2	0.973	0.932	0.910	0.833	0.881	0.891
Firm FE	Yes	Yes	Yes	Yes	Yes	Yes
Industry $\times$ year FE	Yes	Yes	Yes	Yes	Yes	Yes
	<b>b) Long Differences - RF</b>					
	$\Delta$ Ln Sales	$\Delta$ Ln Employment	$\Delta$ Ln Sales per Worker	$\Delta$ Ln VA per Worker	$\Delta$ Ln TFP	$\Delta$ Empl. Sh. High Skill
Rob_Exposure	-0.004** [-2.462]	-0.002** [-2.332]	-0.002 [-1.139]	-0.003* [-1.764]	-0.004** [-2.063]	-0.000 [-0.062]
Rob_Exposure*Elasticity	0.001*** [3.376]	0.0002* [1.653]	0.001*** [2.759]	0.001*** [3.241]	0.001*** [3.138]	0.0002 [1.153]
Obs.	32,792	33,045	32,792	31,719	30,297	33,045
R2	0.079	0.031	0.060	0.047	0.054	0.035
Industry FE	Yes	Yes	Yes	Yes	Yes	Yes

The dependent variables are the firm-level outcomes indicated in columns' headings, expressed as annual observations in panel a) and as annualized changes in panel b). Ln Rob\_Intensity is the log ratio between the cumulative stock of robot capital and the total capital stock of the firm. Industry refers to 5-digit industries. Rob\_Exposure is the product between the firm-level employment share of occupations that can be replaced by robots in 1994 (Replaceability) and the log ratio between the overall stock of robots and the total capital stock of all other firms in each 5-digit industry in 1994 (Rob\_Suitability). Elasticity of demand is defined at the 3-digit industry level. The control variables included panel a) are log sales and dummies for whether the firm is an importer or an exporter, observed in the first year in which the firm appears in the sample and interacted with a full set of year dummies. The control variables in panel b) are the initial values of log sales and dummies for whether the firm is an importer or an exporter, Rob\_Suitability, Replaceability and Replaceability\*Elasticity. Industry fixed effects are at the 5-digit level in panel a) and at the 3-digit level in panel b). Standard errors are clustered at the firm level in panel a) and at the 5-digit industry level in panel b), t-statistics are reported in squared brackets. \*\*\*, \*\*, \*: denote significance at the 1, 5 and 10% level, respectively.

industries where demand is more elastic, the productivity effect is expected to be stronger because firms can scale up production without large reductions in prices. As a result, employment is less likely to fall for firms facing a very elastic demand. While a similar point has been made in Bessen (2019), who also provide some historical evidence from US industries, our rich firm-level data seem especially well suited to address this question.

To test this hypothesis, we extend the estimation equations by adding an interaction between our proxy for robot adoption and estimates of the elasticity of substitution at the 3-digit level, sourced from Broda and Weinstein (2006). We do this both for the OLS panel estimates, in which the explanatory variable is robot intensity, and for the reduced-form esti-

mates for the long-difference specification.<sup>20</sup> The results are reported in Table 7. Consistent with the model, they show that robot adoption causes a larger increase in sales in industries where products are more substitutable. Similarly, robot adoption has a less negative effect on employment in industries where demand is more elastic, although the coefficient for the interaction term is not precisely estimated in the panel. According to the estimates in panel b), the effect switches sign, from negative to positive, when the demand elasticity is higher than 10, i.e., in roughly 10 percent of the industries in our sample. Finally, the effect of automation on productivity is also stronger where products are more substitutable.

## 6 CONCLUSIONS

In this paper, we have documented how the adoption of industrial robots affects a number of firm-level outcomes using data from the universe of French firms observed between 1994 and 2013. To better inform our empirical strategy, we have built a model in which heterogeneous firms invest in automation. Robots saves on production workers, but they also requires non-production workers such as engineers and managers. A decline in the cost of capital induces firms to invest more in automation, with ambiguous effects on employment. On the one hand, machines displace workers; on the other hand, the increase in productivity raises the demand for all factors. Importantly, these effects vary across firms: since automation saves on the variable cost, firms facing a higher demand invest more in automation and are more likely to shed workers.

The model illustrates one challenge in testing the effect of automation on employment: demand shocks tend to generate a positive correlation between automation and employment even when exogenous changes in automation would lead to job losses. A second key challenge that researchers have faced so far is the measurement of automation at the firm level. The main contribution of this paper is to propose a solution to these difficulties. We have shown how data on firm imports of industrial robots can be used to build proxies for automation that are independent of demand shocks. Our rich data set allows us to document a number of empirical patterns.

First, we have shown that robot adopters differ significantly from other firms: they are larger, more productive and employ a higher share of high-skill workers. Over time, robot adoption occurs after periods of expansion in firm size, and is followed by improvements in firm efficiency and an increase in demand for low-skill workers. Guided by our theoretical

---

<sup>20</sup>We do not report the IV estimates because instrumenting interactions is notoriously very demanding.

model, we have then developed various empirical strategies to identify the causal effects of robot adoption. Our results suggest that, while demand shocks generate a positive correlation between robot adoption and employment, exogenous changes in automation lead to job losses, especially for low-skill workers.

We also found that, while robot adoption increases significantly sales per worker, its effect on total sales is much less strong, suggesting that the efficiency gains do not always translate into an equivalent fall in prices. These results raise concerns on some possible negative effects of automation: besides the costly displacement of workers emphasized in the literature, our findings suggest that the productivity gains from automation may be partly offset by an increase in markups and that the widespread diffusion of automation, especially among already large firms, may have contributed to the rise of market power.<sup>21</sup>

While this paper is a first attempt at identifying the firm-level effect of the adoption of industrial robots, much remains to be done. First, in this paper we have focused attention to firms that import robots. However, it would also be interesting to study what happens to other firms in the same industry. In particular, robot adoption is likely to induce reallocation of market shares away from non adopters. Given that these firms differ markedly in many dimensions, such a reallocation is likely to have significant effects on the demand for labor and welfare. Estimating and quantifying these industry-level adjustments seems an important step to fully understand the aggregate impact of automation.<sup>22</sup> Second, investigating more the effects of automation on market power seems also important. While we have found evidence consistent with the hypothesis that automation may grant market power, more direct evidence is needed. Third, studying the labor-market adjustments to automation seems crucial for designing policies that could guarantee the benefits from new technologies to be fully realized and broadly shared. Given the speed of technological progress and its potentially disruptive effects, this is likely to become one of the most pressing challenges for advanced economies in the near future.

---

<sup>21</sup>On the recent rise of market power, see for instance De Loecker and Eeckhout (2017) and Autor et al. (2017).

<sup>22</sup>See Acemoglu, Leclerc and Restrepo (2020), and Koch, Manuylov and Smolka (2019), for some evidence on this reallocation.

## REFERENCES

- [1] Acemoglu, Daron and David Autor (2011). “Skills, Tasks and Technologies: Implications for Employment and Earnings.” volume 4B, *Handbook of Labor Economics*, chapter 12, 1043-1171. Elsevier.
- [2] Acemoglu, Daron, Gino Gancia and Fabrizio Zilibotti (2015). “Offshoring and Directed Technical Change,” *American Economic Journal: Macroeconomics*, 7(3):84-122.
- [3] Acemoglu, Daron and Pascual Restrepo (2018a). “The Race Between Man and Machine: Implications of Technology for Growth, Factor Shares and Employment.” *American Economic Review*, 108(6):1488–1542.
- [4] Acemoglu, Daron, Claire Lelarge and Pascual Restrepo (2020). “Competing with Robots: Firm-Level Evidence from France,” *American Economic Review, Papers and Proceedings*, forthcoming.
- [5] Acemoglu, Daron and Pascual Restrepo (2018b). “Demographics and Automation,” NBER Working Paper 24421.
- [6] Acemoglu, Daron and Pascual Restrepo (2019). “Robots and Jobs: Evidence from the US Labor Markets,” *Journal of Political Economy*, forthcoming.
- [7] Akerberg, Daniel, Kevin Caves and Garth Frazer (2015). "Identification Properties of Recent Production Function Estimators," *Econometrica*, 83(6), 2411-2451.
- [8] Aghion, Philippe, Celine Antonin, Simon Bunel, and Xavier Jaravel (2019). “What Is the Impact of Automation on Employment? New Evidence from France,” CEPR Discussion Paper 14443.
- [9] Aghion, Philippe, Benjamin F. Jones, Charles I. Jones (2019). “Artificial Intelligence and Economic Growth” in *The Economics of Artificial Intelligence: An Agenda* Ajay Agrawal, Joshua Gans, and Avi Goldfarb, editors, University of Chicago Press
- [10] Autor, David and Anna Salomons (2017). “Robocalypse Now - Does Productivity Growth Threaten Employment?” Working paper, MIT.
- [11] Autor, David, David Dorn, Lawrence F. Katz, Christina Patterson, and John Van Reenen (2017). “The Fall of the Labor Share and the Rise of Superstar Firms,” *NBER Working Paper No. 23396*.
- [12] Autor, David, Frank Levy and Richard J. Murnane (2003). “The Skill Content of Recent Technological Change: An Empirical Exploration,” *The Quarterly Journal of Economics*, 118(4):1279-1333.
- [13] Baldwin, R. (2019). *The Globotics Upheaval: Globalisation, Robotics and the Future of Work*. Oxford University Press.
- [14] Bessen, James (2019). “Automation and jobs: when technology boosts employment,” *Economic Policy*, 34(100), 589–626.

- [15] Bessen, James, Maarten Goos, Anna Salomons and Wiljan van den Berge (2019). “What happens to workers at firms that automate,” working paper.
- [16] Blanas, Sotiris, Gino Gancia, and Sang Yoon (Tim) Lee (2019), “Who is Afraid of Machines?” *Economic Policy*, 34(100), 627–690.
- [17] Bonfiglioli, Alessandra, Rosario Crinò and Gino Gancia (2019). “Firms and Economic Performance: A View from Trade,” CEPR Discussion Paper 12829.
- [18] Broda, Christian and David Weinstein (2006). “Globalization and the Gains from Variety,” *Quarterly Journal of Economics*, 121, 541–585.
- [19] Brynjolfsson, Erik and Andrew McAfee (2014). *The Second Machine Age: Work, Progress, and Prosperity in a Time of Brilliant Technologies*. NY: W.W. Norton.
- [20] Caselli, Francesco and Alan Manning (2019). “Robot arithmetic: new technology and wages”. *American Economic Review: Insights*, 1 (1). pp. 1-12.
- [21] Cheng, Hong, Ruixue Jia, Dandan Li, and Hongbin Li (2019). “The Rise of Robots in China,” *Journal of Economic Perspectives*, 33(2): 71–88.
- [22] Chernozhukov, Victor and Christian Hansen (2008). “The Reduced Form: A Simple Approach to Inference with Weak Instruments,” *Economics Letters*, 100(1): 68-71.
- [23] Dauth, Wolfgang, Sebastian Findeisen, Jens Suedekum and Nicole Woessner (2018). “Adjusting to Robots: Worker-Level Evidence,” Technical report, Opportunity & Inclusive Growth Institute, Federal Reserve Bank of Minneapolis.
- [24] De Loecker, Jan and Jan Eeckhout (2017). “The Rise of Market Power and the Macroeconomic Implications,” *NBER Working Paper No 23687*.
- [25] De Loecker, Jan and Frederic Warzynski (2012). “Markups and Firm-Level Export Status,” *American Economic Review*, 102(6), 2437-2471.
- [26] Dechezlepretre, Antoine, David Hemous, Morten Olsen and Carlo Zanella (2019). “Automating Labor: Evidence from Firm-level Patent Data” working paper.
- [27] Dinlersoz, Emin and Zoltan Wolf (2018) “Automation, Labor Share, and Productivity: Plant-Level Evidence from U.S. Manufacturing,” Census.
- [28] Dixen, Jay, Bryan Hong and Lynn Wu (2019) “The Employment Consequences of Robots: Firm-level Evidence.” Statistics Canada.
- [29] European Commission (2016). “Analysis of the Impact of Robotic Systems on Employment in the European Union,” Technical report.
- [30] Frey, Carl B. and Michael A. Osborne (2017). “The Future of Employment: How Susceptible are Jobs to Computerisation?” *Technological Forecasting and Social Change*, 114(C):254-280.



- [31] Graetz, Georg, and Guy Michaels (2018). “Robots at Work,” *Review of Economics and Statistics* 100(5): 753–68.
- [32] Hemous, David and Morten Olsen (2018). “The Rise of the Machines: Automation, Horizontal Innovation and Income Inequality,” working paper.
- [33] Hottman, Colin, Stephen Redding and David Weinstein (2016). “Quantifying the Sources of Firm Heterogeneity,” *Quarterly Journal of Economics*, 131, 1291–1364.
- [34] Humlum, Anders (2019). “Robot Adoption and Labor Market Dynamics,” working paper.
- [35] Koch, Michael, Ilya Manuylov and Marcel Smolka (2019). “Robots and Firms,” working paper.
- [36] Korinek, Anton and Ding Xuan Ng (2018). “Digitization and the Macro-Economics of Superstars”.
- [37] Levinsohn, James and Amil Petrin (2003). "Estimating Production Functions Using Inputs to Control for Unobservables," *Review of Economic Studies*, 70(2), 317–341.
- [38] Mann, Katja and Lukas Puttman (2017). “Benign Effects of Automation: New Evidence from Patent Texts,” Unpublished manuscript.
- [39] Martinez, Joseba (2019). “Automation, Growth and Factor Shares” working paper.
- [40] Raj, Manav and Robert Seamans (2018). “AI, Labor, Productivity and the Need for Firm-Level Data” NYU Stern Working Paper.
- [41] Wooldridge, Jeffrey M. (2009). “On estimating firm-level production functions using proxy variables to control for unobservables,” *Economics Letters*, 104(3), 112-114.
- [42] Zeira, Joseph (1998). “Workers, Machines, And Economic Growth,” *Quarterly Journal of Economics*, 113(4), 1091–1117.

APPENDIX A CHOICE OF AUTOMATION: COMPARATIVE STATICS

Denote the marginal benefit and the marginal cost of automation as  $MB_i$  and  $MC_i$ , respectively. Then:

$$\begin{aligned}\frac{\partial MB_i}{\partial \kappa_i} &= MB_i \times (\sigma - 1) \ln \left( \frac{w}{r_i} \right) \\ \frac{\partial MC_i}{\partial \kappa_i} &= (\delta - 1) \frac{MC_i}{\kappa_i}.\end{aligned}$$

Profits are globally concave in  $\kappa_i$  when:

$$\frac{\partial MB_i}{\partial \kappa_i} < \frac{\partial MC_i}{\partial \kappa_i}.$$

Under the assumption  $(\sigma - 1) \ln \left( \frac{w}{r_i} \right) < \delta - 1$ , this condition is always satisfied at  $\kappa_i^*$ .

We derive here the comparative statics for the optimal level of automation,  $\kappa_i^*$ , with respect to the primitives of the model and prove that:

$$\frac{d\kappa_i^*}{dA_i} > 0; \quad \frac{d\kappa_i^*}{d\varphi_i} > 0; \quad \frac{d\kappa_i^*}{d(w/r_i)} > 0; \quad \frac{d\kappa_i^*}{d(\rho_i/h)} > 0.$$

Differentiating the first-order condition (11), we obtain the implicit derivative of  $\kappa_i^*$  with respect to any parameter  $v$  as

$$\frac{d\kappa_i^*}{dv} = \frac{\frac{\partial MC}{\partial v} - \frac{\partial MB}{\partial v}}{\frac{\partial MB}{\partial \kappa_i} - \frac{\partial MC}{\partial \kappa_i}}.$$

As noted above, condition (13) implies that the denominator is always negative. Hence, to find the sign of the derivatives of interest, we just need to compute the numerator of the expression above for  $A_i$ ,  $\varphi_i$ ,  $(w/r_i)$  and  $(\rho_i/h)$  as follows:

$$\begin{aligned}\frac{\partial MC}{\partial A_i} - \frac{\partial MB}{\partial A_i} &= -\frac{MB}{A_i} < 0 \rightarrow \frac{d\kappa_i^*}{dA_i} > 0 \\ \frac{\partial MC}{\partial \varphi_i} - \frac{\partial MB}{\partial \varphi_i} &= -(\sigma - 1) \frac{MB}{\varphi_i} < 0 \rightarrow \frac{d\kappa_i^*}{d\varphi_i} > 0 \\ \frac{\partial MC}{\partial (w/r_i)} - \frac{\partial MB}{\partial (w/r_i)} &= -\frac{MB}{(w/r_i)} \left[ \kappa_i (\sigma - 1) + \frac{1}{\ln(w/r_i)} \right] < 0 \rightarrow \frac{d\kappa_i^*}{d(w/r_i)} > 0 \\ \frac{\partial MC}{\partial (\rho_i/h)} - \frac{\partial MB}{\partial (\rho_i/h)} &= -\frac{MC}{(\rho_i/h)} < 0 \rightarrow \frac{d\kappa_i^*}{d(\rho_i/h)} > 0.\end{aligned}$$

## APPENDIX B AUTOMATION AND THE LABOR SHARE

We now study the effect of automation on the labor share. Recall that automation affects both the demand for production and non-production workers. The labor share, denoted by  $\lambda_i$ , is then:

$$\lambda_i \equiv \frac{wl_i + hf(\kappa_i, \rho_i)}{p_i y_i} = \left(1 - \frac{1}{\sigma}\right) (1 - \kappa_i) + \frac{h\kappa_i^\delta}{\rho_i \delta p_i y_i}.$$

After using equations (5) and (15) we obtain:

$$\lambda_i = \left(1 - \frac{1}{\sigma}\right) \left[1 + \kappa_i \left(\frac{1}{\delta} \ln\left(\frac{w}{r_i}\right) - 1\right)\right]. \quad (20)$$

This equation shows that the labor share falls with automation when  $\ln(w/r_i) < \delta$ .

## APPENDIX C AUTOMATION AND MARKET POWER

We now extend the model to incorporate the notion that automation may increase market power (e.g., Martinez, 2019, and Korinek and Ng, 2018). To keep the analysis as simple as possible, we consider a case in which firms set their price so as to keep potential competitors out of the market (limit pricing). Potential competitors can copy existing varieties, but they are less productive than the original producer. To make the equilibrium markup a function of  $\kappa_i$ , we assume that the production process of firms that use automation more intensively is harder to imitate. As a result, the wedge between the limit price and the marginal cost increase in  $\kappa_i$ . To capture the implications of this setup, we denote with  $\mu(\kappa_i) \in (0, 1/\sigma)$  the profit share of revenue and assume  $\mu'(\kappa_i) > 0$ .<sup>23</sup>

Then, the labor demand in equation (7) becomes:

$$l_i = w^{-\sigma} (1 - \mu(\kappa_i))^\sigma A_i \varphi_i^{\sigma-1} \left(\frac{w}{r_i}\right)^{\kappa_i(\sigma-1)} (1 - \kappa_i).$$

This expression shows that automation affects labor demand not only via the productivity and the displacement effects, but also through the increase in the markup, as it is made clear by the derivative:

$$\frac{dl_i/l_i}{d\kappa_i} = -\frac{\sigma\mu'(\kappa_i)}{1 - \mu(\kappa_i)} + (\sigma - 1) \ln \frac{w}{r_i} - \frac{1}{1 - \kappa_i}.$$

The endogenous reaction of markups dampens the productivity effect because the cost saving generated by automation is only partially transferred to prices.

The impact of  $\kappa_i$  on markups also affects the incentives to automate. In particular,  $\kappa_i$  is chosen to solve:

$$\max_{\kappa_i} \left\{ \mu(\kappa_i) p_i y_i - \frac{h\kappa_i^\delta}{\rho_i \delta} \right\}.$$

---

<sup>23</sup>The main results would be qualitatively similar if we considered other models of imperfect competition in which the perceived demand elasticity is a function of market shares.

The first-order condition for automation becomes:

$$(\sigma - 1) p_i y_i \left[ \mu(\kappa_i) \ln \left( \frac{w}{r_i} \right) + \left( \frac{1}{\sigma - 1} - \frac{\mu(\kappa_i)}{1 - \mu(\kappa_i)} \right) \mu'(\kappa_i) \right] = \frac{h \kappa_i^{\delta-1}}{\rho_i}. \quad (21)$$

This equation shows that, as long as the markup is below the one that would be chosen without limit pricing ( $\mu(\kappa_i) < 1/\sigma$ ), and  $\mu'(\kappa_i) > 0$ , then firms have an incentive to automate to increase their market power. This case introduces the possibility of "excessive" automation. For instance, if

$$\frac{\mu'(\kappa_i)}{1 - \mu(\kappa_i)} = \ln \left( \frac{w}{r_i} \right),$$

automation would be chosen only to increase profits, with no effect on prices and sales, and hence no gains to consumers.

#### APPENDIX D DISCRETE CHOICE OF AUTOMATION

We now consider the case in which firm  $i$  can choose whether to keep the current level of automation  $\kappa_0$  at no additional cost or increase it to  $\kappa_1 > \kappa_0$ , subject to the cost  $\frac{h\kappa_1}{\rho_i}$ . The discrete choice problem facing firm  $i$  is

$$\max_{\kappa_i \in \{\kappa_0, \kappa_1\}} \left\{ \frac{p_i(\kappa_i) y_i(\kappa_i)}{\sigma} - h f(\kappa_i, \rho_i) \right\}.$$

The condition for  $i$  to choose  $\kappa_1$  is

$$\frac{p_i(\kappa_1) y_i(\kappa_1) - p_i(\kappa_0) y_i(\kappa_0)}{\sigma} > \frac{h\kappa_1}{\rho_i},$$

which, after using (1) and (9), becomes

$$\frac{A_i}{\sigma} \left[ \varphi_i^\sigma w^{-\sigma} \left( 1 - \frac{1}{\sigma} \right)^\sigma \right]^{1-1/\sigma} \left[ \left( \frac{w}{r_i} \right)^{\kappa_1 \sigma} - \left( \frac{w}{r_i} \right)^{\kappa_0 \sigma} \right]^{1-1/\sigma} > \frac{h\kappa_1}{\rho_i}.$$

The left-hand side captures the benefit of further automation, while the right-hand side corresponds to its cost.

In this case, we can express the comparative statics in terms of the probability that an increase in any parameter induces a switch from  $\kappa_0$  to  $\kappa_1$ . In particular, we are interested in the effect of an increase in  $\frac{w}{r_i}$  and its interaction with  $A_i$ ,  $\varphi_i$  and  $\rho_i$ . It is easy to show that the left-hand side, denoted by  $B_i$ , is increasing in  $\frac{w}{r}$ :

$$\frac{\partial B_i}{\partial \left( \frac{w}{r_i} \right)} = \frac{(\sigma - 1) A_i}{\sigma} \left[ \varphi_i^\sigma w^{-\sigma} \left( 1 - \frac{1}{\sigma} \right)^\sigma \right]^{1-1/\sigma} \frac{\left[ \kappa_1 \left( \frac{w}{r_i} \right)^{\kappa_1 \sigma - 1} - \kappa_0 \left( \frac{w}{r_i} \right)^{\kappa_0 \sigma - 1} \right]}{\left[ \left( \frac{w}{r_i} \right)^{\kappa_1 \sigma} - \left( \frac{w}{r_i} \right)^{\kappa_0 \sigma} \right]^{1/\sigma}} > 0.$$

This means that increasing automation is more likely to be optimal for lower relative cost of capital ( $r_i/w$ ).

To characterize the interaction with  $A_i$  and  $\varphi_i$ , we compute the cross derivatives of  $B_i$ ,

$$\begin{aligned}\frac{\partial^2 B_i}{\partial \left(\frac{w}{r_i}\right) \partial A_i} &= \frac{\partial B_i}{\partial \left(\frac{w}{r_i}\right)} A_i^{-1} > 0, \\ \frac{\partial^2 B_i}{\partial \left(\frac{w}{r_i}\right) \partial \varphi_i} &= \frac{\partial B_i}{\partial \left(\frac{w}{r_i}\right)} \sigma \varphi_i^{-1} > 0,\end{aligned}$$

which imply that the likelihood of further automation increases more with  $(w/r_i)$  for larger and more productive firms.

The derivative of the automation cost with respect to  $\rho_i$ ,

$$\frac{\partial}{\partial \rho_i} \left( \frac{h\kappa_1}{\rho_i} \right) = -\frac{h\kappa_1}{\rho_i^2} < 0,$$

suggests that an increase in  $(w/r_i)$  increases more the likelihood of further automation for firms with higher replaceability  $\rho_i$ , since these face a lower cost.

APPENDIX E ADDITIONAL ESTIMATES AND ROBUSTNESS

Table 8 reports the estimation coefficients corresponding to the plots in Figure 5.

Table 8: Difference-in-Differences Event Study

	(1)	(2)	(3)	(4)	(5)	(6)
	ln Sales	ln Employment	ln Sales per Worker	ln VA per Worker	ln TFP	Empl. Sh. High Skill
Rob_Adoption (t-4)	0.065** [2.447]	0.013 [0.696]	0.013 [0.661]	0.051* [1.804]	0.061** [2.449]	0.002 [0.828]
Rob_Adoption (t-3)	0.091*** [3.117]	0.067*** [3.804]	-0.020 [-1.076]	0.021 [0.775]	0.053** [2.129]	0.001 [0.441]
Rob_Adoption (t-2)	0.112*** [3.629]	0.073*** [3.529]	-0.010 [-0.466]	0.007 [0.253]	0.038 [1.407]	0.004 [1.500]
Rob_Adoption (t-1)	0.156*** [4.830]	0.093*** [4.036]	-0.002 [-0.090]	0.012 [0.416]	0.047* [1.818]	0.006** [2.259]
Rob_Adoption	0.205*** [6.207]	0.123*** [5.196]	0.013 [0.605]	0.012 [0.418]	0.046* [1.789]	0.006* [1.956]
Rob_Adoption (t+1)	0.218*** [6.283]	0.130*** [5.137]	0.013 [0.583]	0.002 [0.054]	0.043* [1.655]	0.009*** [2.692]
Rob_Adoption (t+2)	0.200*** [5.514]	0.091*** [3.020]	0.018 [0.649]	0.031 [0.943]	0.064** [2.207]	0.012*** [3.335]
Rob_Adoption (t+3)	0.208*** [5.556]	0.056* [1.732]	0.061** [2.263]	0.077** [2.196]	0.092*** [3.053]	0.017*** [3.913]
Rob_Adoption (t+4)	0.193*** [4.868]	0.041 [1.104]	0.065** [2.089]	0.075** [2.050]	0.084*** [2.726]	0.018*** [3.790]
Rob_Adoption (t+5)	0.217*** [5.298]	0.061* [1.786]	0.052* [1.933]	0.069** [2.025]	0.089*** [2.890]	0.014*** [3.016]
Obs.	710,135	611,484	610,049	599,615	588,465	611,484
R2	0.93	0.88	0.89	0.82	0.86	0.68
Firm FE	Yes	Yes	Yes	Yes	Yes	Yes
Industry $\times$ year FE	Yes	Yes	Yes	Yes	Yes	Yes

The dependent variables are annual observations at time t of the firm-level outcomes indicated in columns' headings. Rob\_Adoption is a dummy equal to 1 for all years since the firm starts importing robots, and equal to 0 otherwise. Industry refers to 5-digit industries. Standard errors are heteroskedasticity robust and t-statistics are reported in square brackets. \*\*\*, \*\*, \*: denote significance at the 1, 5 and 10% level, respectively.

Table 9 replicates the estimates in Table 2 using `Rob_Intensity` as the ratio between the cumulative stock of robot capital and the total capital stock of the firm, where the cumulative stock of robot capital is constructed assuming a depreciation rate of 15 percent.

Table 9: Firm-Level Outcomes and Ln Robot Intensity with Depreciation, Panel (OLS)

	(1)	(2)	(3)	(4)	(5)	(6)
	ln Sales		ln Employment		ln Sales per Worker	
Ln Rob_Intensity	-0.054**	-0.080***	-0.094***	-0.097***	0.020*	0.017
	[-2.145]	[-3.347]	[-4.688]	[-4.758]	[1.751]	[1.443]
Obs.	5,998	5,948	6,003	5,953	5,998	5,948
R2	0.969	0.973	0.930	0.931	0.910	0.910
	ln VA per Worker		Ln TFP		Empl. Sh. High Skill	
Ln Rob_Intensity	0.032***	0.036***	0.023**	0.021*	0.012***	0.011***
	[2.695]	[2.911]	[2.025]	[1.829]	[3.129]	[2.792]
Obs.	5,823	5,773	5,817	5,767	6,003	5,953
R2	0.833	0.834	0.884	0.886	0.890	0.891
Firm FE	Yes	Yes	Yes	Yes	Yes	Yes
Industry $\times$ year FE	Yes	Yes	Yes	Yes	Yes	Yes
Controls	No	Yes	No	Yes	No	Yes

The dependent variables are annual observations of the firm-level outcomes indicated in columns' headings. Ln Rob\_Intensity is the log of the ratio between the cumulative stock of robot capital and the total capital stock of the firm; the cumulative stock of robot capital is constructed using a depreciation rate of 15%. Industry refers to 5-digit industries. The control variables included in columns (2) and (4) are log sales and dummies for whether the firm is an importer or an exporter, observed in the first year in which the firm appears in the sample and interacted with a full set of year dummies. Standard errors are clustered at the firm level, t-statistics are reported in squared brackets. \*\*\*, \*\*, \*: denote significance at the 1, 5 and 10% level, respectively.

APPENDIX F DESCRIPTIVE STATISTICS FOR LONG DIFFERENCES

We report in Table 10 descriptive statistics for the main variables included in the estimations for long differences in Section 5.2.

Table 10: Descriptive Statistics - Long Differences Sample

	<b>Robot Adopters</b>			
	Obs.	Mean	Median	Std. Dev.
$\Delta \text{Ln}(\text{No. of employees})$	513	-0.009	0.003	0.079
$\Delta(\text{Empl. sh. high skill})$	513	0.006	0.003	0.009
$\Delta \text{Ln}(\text{Sales})$	509	-0.093	-0.081	0.094
$\Delta \text{Ln}(\text{Sales per worker})$	509	-0.083	-0.081	0.091
$\Delta \text{Ln}(\text{VA per worker})$	485	-0.095	-0.093	0.096
$\Delta \text{Ln}(\text{TFP})$	474	-0.092	-0.086	0.084
Importer	513	0.924	1	0.265
Exporter	513	0.887	1	0.317
$\text{Ln}(\text{sales})$	513	11.731	11.578	1.775
Replaceability	513	0.372	0.403	0.185
Rob_Exposure	513	-5.717	-5.249	3.774
	<b>Non Robot Adopters</b>			
$\Delta \text{Ln}(\text{No. of employees})$	36,459	-0.033	-0.012	0.095
$\Delta(\text{Empl. sh. high skill})$	36,459	0.003	0.001	0.012
$\Delta \text{Ln}(\text{Sales})$	36,157	-0.131	-0.108	0.131
$\Delta \text{Ln}(\text{Sales per worker})$	36,157	-0.097	-0.093	0.131
$\Delta \text{Ln}(\text{VA per worker})$	35,049	-0.104	-0.101	0.140
$\Delta \text{Ln}(\text{TFP})$	33,490	-0.099	-0.098	0.218
Importer	36,459	0.548	1	0.498
Exporter	36,459	0.518	1	0.500
$\text{Ln}(\text{sales})$	36,437	9.877	9.683	1.375
Replaceability	36,459	0.357	0.358	0.190
Rob_Exposure	36,459	-6.629	-5.889	4.314

The sample for long differences consists of 36,972 manufacturing firms with more than 10 employees. Statistics are reported for the annualized changes in the dependent variables and for the initial values of the Importer and Exporter dummies,  $\text{Ln}(\text{sales})$  and  $\text{Rob\_Exposure}$ .  $\text{Rob\_Exposure}$  is the product between the firm-level employment share of occupations that can be replaced by robots in 1994 ( $\text{Replaceability}$ ) and the log ratio between the overall stock of robots and the total capital stock of all other firms in each 5-digit industry in 1994 ( $\text{Rob\_Suitability}$ ).